

Manual or Power Rewind Reels

Series 1500. To handle single 1/4" through 5/8" I.D. hose.

Series 1800. To handle single 1/2" through 3/4" I.D. hose.

Series 4000. To handle single 3/4" or 1" I.D. hose.

Hannay's strong, lightweight compact reels designed for long lengths of hose in manual and power rewind applications. Their compact size and many options make these reels exceptionally versatile and able to meet special requirements.

Rewind:

Manual – A direct crank rewind is permanently attached to the reel axle on Series 1500 and 1800, and is removable on Series 4000.

Power – A chain and sprocket drive is powered by electric, hydraulic, or compressed air motor. An auxiliary crank is not supplied on power rewind models but is available at extra cost when specified.

Brakes & Locks:

Series 1500 – reels with direct crank rewind are supplied with a cam lock drag brake and a spring actuated pin lock as standard.

Series 1800 and 4000 – reels with direct crank rewind are supplied with an adjustable spring tension brake and a spring actuated pin lock as standard.

Inlet:

Series 1500 – standard inlet is 90° ball bearing swivel joint with 1/2" female NPT threads.

Series 1800 and 4000 – standard inlet is 90° ball bearing swivel joint with 1" female NPT threads.

Outlet:

Series 1500 – standard outlet is 1/2" female NPT threads.

Series 1800 – standard outlet is 3/4" female NPT threads.

Series 4000 – standard outlet is 1" female NPT threads.

Other sizes and/or threads, including male GHT threads, can be furnished and must be specified.

Standard inlet, outlet riser and hub assembly are steel. These components can be supplied in stainless steel, at extra cost, to meet special product handling requirements such as breathing air. (Consult factory)

Optional Rollers:

Rollers may be purchased as accessory items. Specify roller position when ordering. Mounting brackets are necessary. (See Ordering Guide & Accessory Catalog).

Operating Pressures & Temperatures:

Series 1500 - these operate at pressures to 3000 psi (207 bar) and handle product temperatures from +20° F to +400° F (-7° C to +204° C).

Series 1800 and 4000 - these reels operate at pressures to 1000 psi (69 bar) and handle product temperatures from -80° F to +185° F (-62° C to +85° C).

Reels to operate at other pressures and temperatures can be furnished at extra cost.

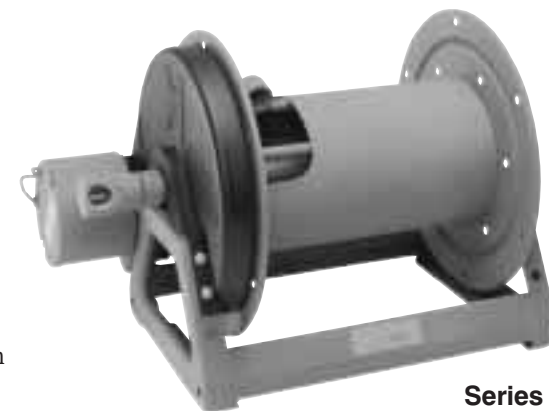
Finish: Refer to page 4.



Manual Rewind
Standard Configuration Shown



Electric Rewind
Standard Configuration Shown



Electric Rewind
Standard Configuration Shown

Series 1500

For:

- Lawn Care
- Pest Control
- Pressure Washing
- Agriculture
- Steam Cleaning

Series 1800

For:

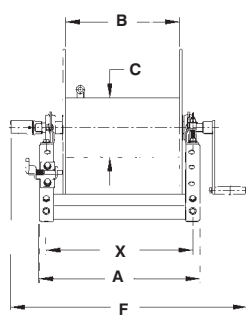
- Air Compressors
- Washdown

Series 4000

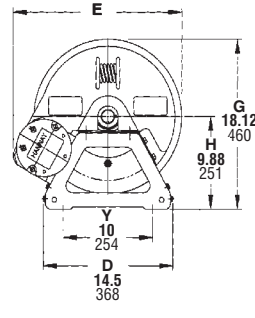
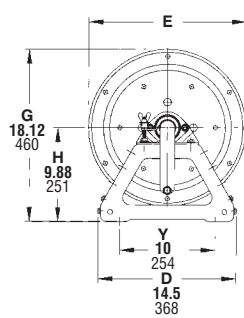
For:

- Fuel Dispensing
- Fire Protection
- Water Supply
- Chemical Transfer

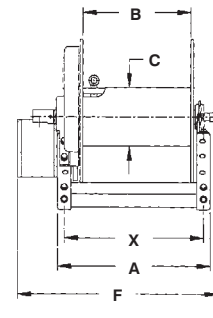
Dimensions and capacities



Series 1500/1800/4000 (Manual Rewind)



Series 1500/1800/4000 (Power Rewind)



BE SURE TO CHECK DIMENSIONS AND WEIGHTS PRIOR TO ORDERING.

To receive a detailed parts breakdown drawing for Series 1500, request ISO 90, for Series 1800, request ISO 136, for Series 4000, request ISO 68.

Hose Capacity of Reel		Model Number	Reel Dimensions												Approx. Weight					
feet m.			inches mm.												lb.	kg.				
		x, y indicate mounting holes. See page 2.												See Note 2						
I.D. (in)	1/4" 3/8" 1/2" 5/8" 3/4" 1"	For Power Rewind See Note 4	A	B	C	E	E	E	E	F	F	F	F	X	NET	SHIP				
O.D. (in)	5/8" 3/4" 7/8" 1" 1 1/32" 1 9/16"		CRANK	ELEC.	AIR	HYD	CRANK	ELEC.	AIR	HYD										
O.D. (mm)	16 19 22 25 33 40																			
200	150	100	75	-	-	*1514-17-18	11	6	6	16.5	19	19	19	19	16.5	16	16.5	9.5	27	34
61	46	30	23	-	-		279	152	152	419	483	483	483	483	419	406	419	241	12	15
425	300	200	150	-	-	*1520-17-18	17	12	6	16.5	19	19	19	25	22.5	22	22.5	15.5	29	36
130	91	61	46	-	-		432	305	152	419	483	483	483	635	572	559	572	394	13	16
625	450	325	225	-	-	*1526-17-18	23	18	6	16.5	19	19	19	31	28.5	28	28.5	21.5	31	38
191	137	99	69	-	-		584	457	152	419	483	483	483	787	724	711	724	546	14	17
-	550	400	300	-	-	*1530-17-18	27	22	6	16.5	19	19	19	35	32.5	32	32.5	25.5	33	40
-	168	122	91	-	-		686	559	152	419	483	483	483	889	826	813	826	648	15	18
-	-	500	375	-	-	*1536-17-18	33	28	6	16.5	19	19	19	41	38.5	38	38.5	31.5	35	42
-	-	152	114	-	-		838	711	152	419	483	483	483	1041	978	965	978	800	16	19
-	-	-	75	50	-	*1816-17-18	13	8	6	16.5	19	19	19	21.75	18.5	18	18.5	11.5	28	35
-	-	-	23	15	-		330	203	152	419	483	483	483	552	470	457	470	292	13	16
-	-	-	150	100	-	*1822-17-18	19	14	6	16.5	19	19	19	27.75	24.5	24	24.5	17.5	30	37
-	-	-	46	30	-		483	356	152	419	483	483	483	705	622	610	622	445	14	17
-	-	-	225	150	-	*1826-17-18	23	18	6	16.5	19	19	19	31.75	28.5	28	28.5	21.5	32	39
-	-	-	69	46	-		584	457	152	419	483	483	483	806	724	711	724	546	15	18
-	-	-	300	180	-	*1830-17-18	27	22	6	16.5	19	19	19	35.75	32.5	32	32.5	25.5	33	40
-	-	-	91	55	-		686	559	152	419	483	483	483	908	826	813	826	648	15	18
-	-	-	375	230	-	*1836-17-18	33	28	6	16.5	19	19	19	41.75	38.5	38	38.5	31.5	36	43
-	-	-	114	70	-		838	711	152	419	483	483	483	1060	978	965	978	800	16	20
-	-	-	50	35	-	*4018-17-18	15	10	8	16.5	19	19	19	25.88	19.75	19.75	19.75	13.5	36	71
-	-	-	15	11	-		381	254	203	419	483	483	483	657	502	502	502	343	16	32
-	-	-	100	50	-	*4024-17-18	21	16	8	16.5	19	19	19	31.88	25.75	25.75	25.75	19.5	46	81
-	-	-	30	15	-		533	406	203	419	483	483	483	810	654	654	654	495	21	37
-	-	-	150	75	-	*4030-17-18	27	22	8	16.5	19	19	19	37.88	31.75	31.75	31.75	25.5	57	92
-	-	-	46	23	-		686	559	203	419	483	483	483	962	806	806	806	648	26	42
-	-	-	200	100	-	4038-17-18	35	30	8	16.5	19	19	19	45.88	39.75	39.75	39.75	33.5	70	112
-	-	-	61	30	-		889	762	203	419	483	483	483	1165	1010	1010	1010	851	32	51

Specifications subject to change.

Notes:

- Upon request, reels can be supplied with drum lengths other than shown.
- Weights shown in chart are for crank rewind models. ADD these amounts for power rewind models:

	Net (lbs.)	Ship (lbs.)	Net (kg.)	Ship (kg.)
Electric	18	18	8.2	8.2
Hydraulic	15	15	6.8	6.8
Air	15	15	6.8	6.8

- Dimension "F" is the overall length of standard model reels. On Series 1500, 1800, and 4000 crank rewind models, the dimension shown is with the crank in rewind position. 4000 series reels require 3 1/2" clearance to remove crank handle.
- When ordering power rewind models, prefix model number with:
A = Air Rewind E = Electric Rewind HD = Hydraulic Rewind
(Air rewind reels are supplied with control valve and hose; 12v and 24v DC rewind reels are supplied with switch and solenoid; 115v AC rewind reels are not supplied with switch but can be ordered separately; hydraulic rewind reels are not supplied with control valve.)

*UPS shippable = Net wt. plus carton wt.