

Manual or Power Rewind Reels

Series 2000. To handle dual 1/4" through 1/2" I.D. hose.

Series 7000. To handle dual 3/4" or 1" I.D. hose.

These reels have two swivel joint inlets and two outlet risers to handle two equal lengths of hose. Hoses can be different diameters, in which case the larger hose diameter determines the reel capacity.

Series 2000 is available for use with oxygen/acetylene. See Series 2400 in Hannay Reels Welding Catalog H-9422-W.

Rewind:

Series 2000 – choose MX chain-drive crank rewind or chain and sprocket drive powered by an electric, hydraulic or compressed air motor.

Series 7000 – choose gear-driven crank rewind or chain and sprocket drive powered by an electric, hydraulic or compressed air motor. An auxiliary rewind is standard on power rewinds.

Brakes & Locks:

Series 2000 – MX chain-drive crank rewind reels are supplied with a pinion brake as standard. Power rewind reels are not supplied with a brake.

Series 7000 – both gear-driven crank rewind and power rewind reels are supplied with a pinion brake as standard.

Inlets:

Series 2000 – standard inlets are 90° ball bearing swivel joints with 1/2" female NPT threads.

Series 7000 – standard inlets are 90° ball bearing swivel joints with 1" female NPT threads.

Outlets:

Series 2000 – standard outlets are 1/2" female NPT threads.

Series 7000 – standard outlets are 1" female NPT threads.

Other sizes and/or threads can be furnished and must be specified.

Optional Rollers:

Rollers may be purchased as accessory items. Specify roller position when ordering. Mounting brackets are necessary. (See Ordering Guide & Accessory Catalog).

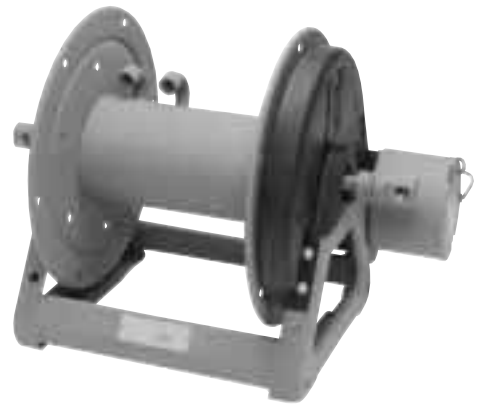
Operating Pressures & Temperatures:

Series 2000 – these reels operate at pressures to 3000 psi (207 bar) and handle product temperatures from +20° F to +400° F (-7° C to +204° C).

Series 7000 – these reels operate at pressures to 1000 psi (69 bar) and handle product temperatures from -80° F to +185° F (-62° C to +85° C).

Reels to operate at other pressures and temperatures can be furnished at extra cost.

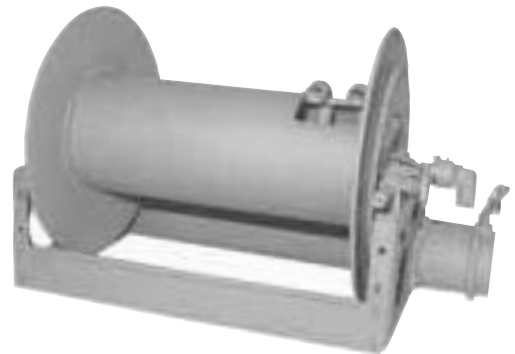
Finish: Refer to page 4.



Series 2000
Standard Configuration Shown

For:

- Hydraulics
- Air/Water

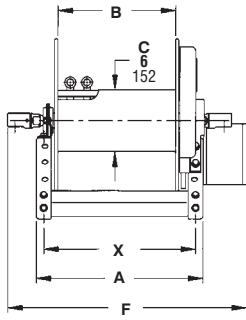


Series 7000
Standard Configuration Shown

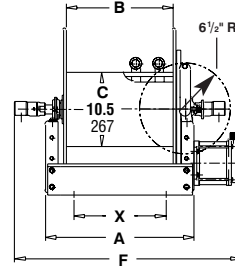
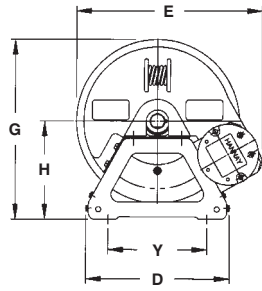
For:

- Hydraulics
- Dual Agents

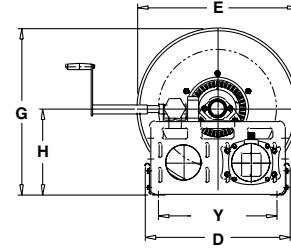
Dimensions and capacities



Series 2000



Series 7000



BE SURE TO CHECK DIMENSIONS AND WEIGHTS PRIOR TO ORDERING.

To receive a detailed parts breakdown drawing for Series 2000, request ISO 112, for Series 7000, request ISO 72.

Hose Capacity of Reel feet m.		Model Number	Reel Dimensions inches mm.																Approx. Weight Crank Rewind lb. kg.	
			x, y indicate mounting holes. See page 2.																NET	SHIP
I.D. (in)	1/4" 3/8" 1/2" 3/4" 1"	For Power Rewind See Note 5	A	B	D	E	E	E	E	F	F	F	F	G	H	X	Y			
I.D. (mm)	6 10 13 19 25						CRANK	ELEC.	AIR	HYD	CRANK	ELEC.	AIR	HYD						
O.D. (in)	5/8" 3/4" 7/8" 1 9/32" 1 9/16"																			
O.D. (mm)	16 19 22 33 40																			
	2/125 2/100 2/50	*2016-17-18	13	8	14.5	18.5	19	19	19	21	20.75	20.25	20.75	18.12	9.88	11.5	10	32	40	
	2/38 2/31 2/15		330	203	368	470	483	483	483	533	527	514	527	460	251	292	254	15	18	
	2/200 2/150 2/100	*2020-17-18	17	12	14.5	18.5	19	19	19	25	24.75	24.25	24.75	18.12	9.88	15.5	10	34	42	
	2/61 2/46 2/31		432	305	368	470	483	483	483	635	629	616	629	460	251	394	254	15	19	
	2/300 2/225 2/150	*2026-17-18	23	18	14.5	18.5	19	19	19	31	30.75	30.25	30.75	18.12	9.88	21.5	10	36	44	
	2/91 2/69 2/46		584	457	368	470	483	483	483	787	781	768	781	460	251	546	254	16	20	
	2/375 2/250 2/175	*2030-17-18	27	22	14.5	18.5	19	19	19	35	34.75	34.25	34.75	18.12	9.88	25.5	10	37	45	
	2/114 2/76 2/53		686	559	368	470	483	483	483	889	883	870	883	460	251	648	254	17	20	
	2/475 2/350 2/250	2036-17-18	33	28	14.5	18.5	19	19	19	41	40.75	40.25	40.75	18.12	9.88	31.5	10	39	47	
	2/145 2/107 2/76		838	711	368	470	483	483	483	1041	1035	1022	1035	460	251	800	254	18	21	
	- - - 2/60 2/25	7024-19-21	21	15.5	20.5	21.88	21.88	21.88	21.88	29.75	32.12	29.75	30	21.5	12.12	13	16.75	100	142	
	- - - 2/18 2/8		533	394	521	556	556	556	556	756	816	756	762	546	308	330	425	45	64	
	- - - 2/90 2/50	7026-23-24	23	17.5	20.5	23	23	23	23	31.75	34.12	31.75	32	23.5	12.12	15	16.75	105	147	
	- - - 2/27 2/15		584	445	521	584	584	584	584	806	867	806	813	597	308	381	425	48	67	
	- - - 2/40 2/30	7016-25-26	13	7.5	25.5	24.75	24.75	24.75	24.75	21.75	24.12	21.75	22	27.88	15.5	5	21.75	95	145	
	- - - 2/12 2/9		330	191	648	629	629	629	629	552	613	552	559	708	394	127	552	43	66	
	- - - 2/175 2/100	7032-25-26	29.5	24	25.5	24.75	24.75	24.75	24.75	38.25	40.62	38.25	38.5	27.88	15.5	21.5	21.75	129	179	
	- - - 2/53 2/31		749	610	648	629	629	629	629	972	1032	972	978	708	394	546	552	59	81	
	- - - 2/300 2/150	† 7032-30-31	29.5	24	25.5	28.75	28.75	28.75	28.75	38.25	40.62	38.25	38.5	29.88	15.5	21.5	21.75	137	187	
	- - - 2/91 2/46		749	610	648	730	730	730	730	972	1032	972	978	759	394	546	552	62	85	
	- - - 2/225 2/115	† 7024-33-34	20.5	15.5	31.5	31.75	31.75	31.75	31.75	29.75	32.12	29.75	29.75	33.62	17.75	13	27.75	120	170	
	- - - 2/69 2/35		521	394	800	806	806	806	806	756	816	756	756	854	451	330	705	54	77	
	- - - 2/350 2/200	† 7032-33-34	29	24	31.5	31.75	31.75	31.75	31.75	38.25	40.62	38.25	38.25	33.62	17.75	21.5	27.75	137	187	
	- - - 2/107 2/61		737	610	800	806	806	806	806	972	1032	972	972	854	451	546	705	62	85	

Specifications subject to change.

Notes:

- Upon request, reels can be supplied with drum lengths other than shown and with disc sizes in other diameters.
- Dimensions shown for Series 7000 up to and including 30-31 disc size reflect pressed frames. All others are channel frames.
- Weights shown in chart are for crank rewind models. ADD these amounts for power rewind models:

	Net (lbs.)	Ship (lbs.)	Net (kg.)	Ship (kg.)
Series 2000				
Electric	18	18	8.2	8.2
Hydraulic	15	15	6.8	6.8
Air	15	15	6.8	6.8

	Net (lbs.)	Ship (lbs.)	Net (kg.)	Ship (kg.)
Series 7000				
Electric	40	40	18.1	18.1
Hydraulic	20	20	9.1	9.1
Air	20	20	9.1	9.1

- Dimension "F" is the overall length of standard model reels. On Series 2000, MX chain drive crank models, the dimension shown is the crank in rewind position. 2000 series reels require 2" clearance to remove crank handle.

- When ordering, prefix model number with:
 A = Air Rewind E = Electric Rewind (2000 Series) MX = Chain Drive Crank
 EP = Electric Rewind (7000 Series) HD = Hydraulic Rewind
 (Air rewind reels are supplied with control valve and hose; 12v and 24v DC rewind reels are supplied with switch and solenoid; 115v AC rewind reels are not supplied with switch but can be ordered separately; hydraulic rewind reels are not supplied with control valve.)

*UPS shippable = Net wt. plus carton wt.

† Some applications require a clutch/reduction unit.