

## Manual Rewind Reels

**Series 3000. To handle 3/4" or 1" I.D. hose.**

**Series 3500. To handle 1-1/4" or 1-1/2" I.D. hose.**

Economical manual rewind reels for long lengths of hose. Designed for specific non-powered applications.

**Rewind:**

Choose disc rewind or removable direct crank rewind.

**Brakes & Locks:**

Reels are supplied with spring-actuated pin lock.

**Inlet:**

Series 3000 – standard inlet is a 90° ball bearing swivel joint with 1" female NPT threads.

Series 3500 – standard inlet is a 90° swivel joint with 1-1/2" female NPT threads and 2" victaulic groove.

**Outlet:**

Series 3000 – standard outlet is 1" female NPT thread.

Series 3500 – standard outlet is a flanged riser with 1-1/2" female NPT threads.

**Other sizes and/or threads can be furnished and must be specified.**

Standard inlet, outlet riser and hub assembly are steel. Optional bronze or aluminum swivel joint and stainless steel hub assembly and riser, are available at extra cost, to meet special product handling requirements.

**Optional Rollers:**

Rollers may be purchased as accessory items. Specify roller position when ordering. Mounting brackets are necessary. (See Ordering Guide & Accessory Catalog).

**Operating Pressures & Temperatures:**

Series 3000 – these reels operate to 1000 psi (69 bar) and handle product temperatures from -80° F to +185° F (-62° C to +85° C).

Series 3500 – these reels operate at pressures to 600 psi (41 bar) and handle product temperatures from -60° F to +175° F (-51° C to +79° C).

**Reels to operate at other pressures and temperatures can be furnished at extra cost.**

**Optional Finish:**

Call factory for offshore/marine finishes, available at extra cost. Also, refer to page 4.



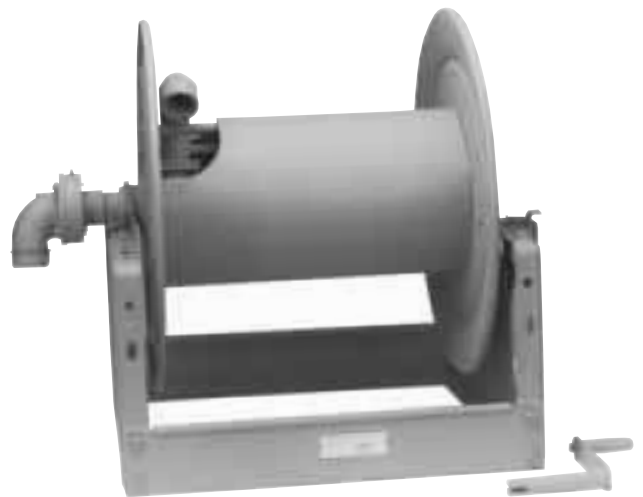
Shown with Optional Crank Handle

**Series 3000**

Standard Configuration Shown

**For:**

- Fuel Dispensing
- Spray Operations
- Fire Protection



Shown with Optional Crank Handle

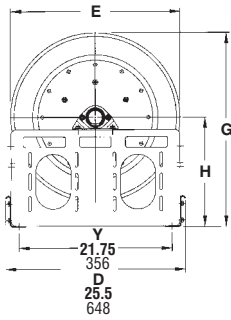
**Series 3500**

Standard Configuration Shown

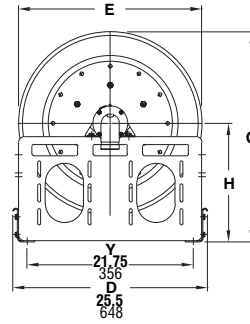
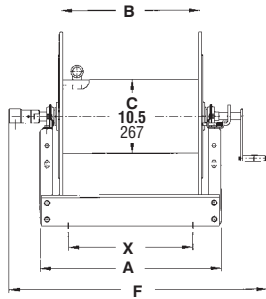
**For:**

- Fuel Dispensing
- Bulk Transfer
- Fire Protection

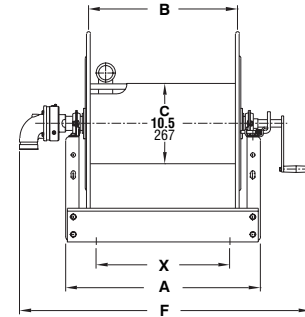
## Dimensions and capacities



Series 3000



Series 3500



### BE SURE TO CHECK DIMENSIONS AND WEIGHTS PRIOR TO ORDERING.

To receive a detailed parts breakdown drawing for Series 3000, request ISO 113, for Series 3500, request ISO 111.

Hose Capacity of Reel							Model Number	Reel Dimensions							Approx. Weight	
feet			m.					inches							lb.	
Round Hose			Collapsible Hose				mm.							kg.		
I.D. (in)	3/4"	1"	1 1/2"	1"	1 1/2"	1 3/4"	A	B	E	F	G	H	X	NET	SHIP	
I.D. (mm)	19	25	38	25	38	44										
O.D. (in)	1 9/32"	1 9/16"	2 1/16"	1/2" x 1 3/4"	3/4" x 3"	7/8" x 3 1/4"										
O.D. (mm)	16	19	22	25	33	40										
100	50	-	200	-	-	3016-25-26	13	7.5	24.75	23.75	27.88	15.5	5	85	120	
30	15	-	61	-	-		330	191	629	603	708	394	127	39	54	
150	100	-	300	-	-	3020-25-26	17	11.5	24.75	27.75	27.88	15.5	9	94	129	
46	30	-	91	-	-		432	292	629	705	708	394	229	43	59	
250	150	-	400	-	-	3024-25-26	21	15.5	24.75	31.75	27.88	15.5	13	103	138	
76	46	-	122	-	-		533	394	629	806	708	394	330	47	63	
300	200	-	550	-	-	3028-25-26	25.5	20	24.75	36.25	27.88	15.5	17.5	113	155	
91	61	-	168	-	-		648	508	629	921	708	394	445	51	70	
-	50	-	-	50	50	3516-25-26	13	7.5	24.75	26	27.88	15.5	5	95	130	
-	15	-	-	15	15		330	191	629	660	708	394	127	43	59	
-	100	50	-	100	75	3520-25-26	17	11.5	24.75	30	27.88	15.5	9	104	139	
-	30	15	-	30	23		432	292	629	762	708	394	229	47	63	
-	150	75	-	150	100	3524-25-26	21	15.5	24.75	34	27.88	15.5	13	113	157	
-	46	23	-	46	30		533	394	629	864	708	394	330	51	71	
-	200	100	-	200	150	3528-25-26	25.5	20	24.75	38.5	27.88	15.5	17.5	123	173	
-	61	30	-	61	46		648	508	629	978	708	394	445	56	78	
-	200	100	-	250	150	3524-30-31	21	15.5	28.75	34	29.88	15.5	13	124	174	
-	61	30	-	76	46		533	394	730	864	759	394	330	56	79	
-	250	150	-	300	250	3528-30-31	25.5	20	28.75	38.5	29.88	15.5	17.5	134	184	
-	76	46	-	91	76		648	508	730	978	759	394	445	61	83	
-	350	200	-	450	350	3534-30-31	31.5	26	28.75	44.5	29.88	15.5	23.5	147	197	
-	107	61	-	137	107		800	660	730	1130	759	394	597	67	89	
-	400	250	-	450	350	3530-33-34	27.5	22	31.75	40.5	32.38	16.5	19.5	138	188	
-	122	76	-	137	107		699	559	806	1029	822	419	495	63	85	

Specifications subject to change.

#### Notes:

- Upon request, reels can be supplied with drum lengths other than shown and with disc sizes in other diameters.
- Power rewind NOT available on these models.
- Dimension "F" is the overall length of standard model reels. On Series 3000 and 3500 crank rewind models, the dimension shown is with the crank in rewind position. 3/2" clearance required to remove crank.
- Subtract 5" from "F" dimension for disc rewind models.