

Manual or Power Rewind Reels To handle single 1-1/2" or 2" I.D. hose.

A strong, heavy-duty reel designed for longer lengths and larger diameters of hose through 2" I.D. Rugged, industrial-duty channel frame construction. Versatile reel features a variety of rewind and joint options.

Rewind:

Choose gear-driven crank rewind or chain and sprocket drive powered by an electric, hydraulic or compressed air motor. A gear-driven mechanism with pinion shaft brake can be specified as auxiliary crank rewind on power rewind reels, at extra cost.

Brakes & Locks:

Crank rewind reels will be supplied with a pinion brake and power rewind reels with a comet brake. Other brakes and locking devices may be specified. (See Ordering Guide & Accessory Catalog.)

Inlet:

Standard inlet is a 90° ball bearing swivel joint with 2" female NPT threads.

Outlet:

Standard outlet is a flanged riser with 2" female NPT threads.

Other sizes and/or threads can be furnished and must be specified.

Standard inlet, outlet riser, and hub assembly are steel. Optional bronze or aluminum swivel joint and stainless steel hub assembly and riser, are available at extra cost, to meet special product handling requirements.

Optional Rollers:

Rollers may be purchased as accessory items. Mounting brackets are necessary. Specify roller position when ordering. (See Ordering Guide & Accessory Catalog.)

Operating Pressures & Temperatures:

These reels operate at pressures to 600 psi (41 bar) and handle product temperatures from -60° F to +175° F (-51° C to +79° C).

Reels to operate at other pressures and temperatures can be furnished at extra cost.

Chain Clutch-Reduction Units:

These units are recommended for use on reels with 39" diameter or larger discs and/or when increased torque and slower rewind speeds are required. Factory-installed when specified or available as an accessory item for field installation. (See Ordering Guide & Accessory Catalog.)



Finish: Refer to page 4.



Shown with Optional Auxiliary Rewind

Series 8000

Standard Configuration Shown

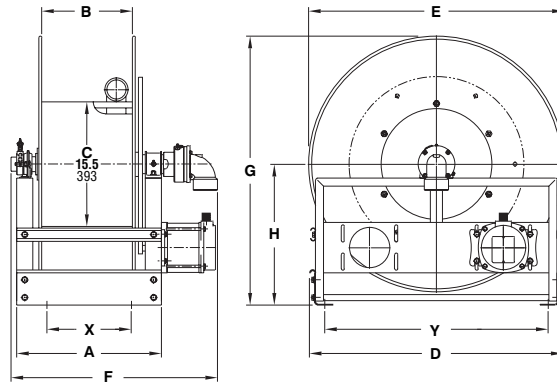
For:

- Bulk Transfer
- Chemical Transfer
- General Dispensing
- Suction/Discharge
- Fueling Applications

Refer to:

Aviation Catalog H-9448-AV
Petroleum Catalog H-9447-FD

Dimensions and capacities



Series 8000

BE SURE TO CHECK DIMENSIONS AND WEIGHTS PRIOR TO ORDERING.
To receive a detailed parts breakdown drawing for Series 8000, request ISO 35.

Hose Capacity of Reel <u>feet</u> m.			Model Number	Reel Dimensions <u>inches</u> mm.											Approx. Weight Crank Rewind <u>lb.</u> kg.		
I.D. (in)	1 1/2"	2"		x, y indicate mounting holes. See page 2.											NET	SHIP	
I.D. (mm)	38	51	For Power Rewind See Note 3	A	B	D	E	F	F	F	F	G	H	X	Y		
O.D. (in)	2 1/16"	2 9/16"		CRANK	ELEC.	AIR	HYD										
O.D. (mm)	52	65															
80	60		8234-26-27	26.25	20	27	25.75	33.75	33.25	33.25	33.25	26.62	13.75	18.75	23.25	120	170
24	18			667	508	686	654	857	845	845	845	676	349	476	591	54	77
100	75		8238-26-27	30.25	24	27	25.75	37.75	37.25	37.25	37.25	26.62	13.75	22.75	23.25	145	195
30	23			768	610	686	654	959	946	946	946	676	349	578	591	66	88
145	100		8246-26-27	38.25	32	27	25.75	45.75	45.25	45.25	45.25	26.62	13.75	30.75	23.25	196	246
44	30			972	813	686	654	1162	1149	1149	1149	676	349	781	591	89	112
85	60		8226-33-34	17.75	11.5	31.5	31.75	25.25	24.75	24.75	24.75	33.38	17.5	10.25	27.75	80	150
26	18			451	292	800	806	641	629	629	629	848	445	260	705	36	68
150	115		8234-33-34	26.25	20	31.5	31.75	33.75	33.25	33.25	33.25	33.38	17.5	18.75	27.75	133	230
46	35			667	508	800	806	857	845	845	845	848	445	476	705	60	105
200	165		8240-33-34	32.25	26	31.5	31.75	39.75	39.25	39.25	39.25	33.38	17.5	24.75	27.75	169	290
61	50			819	660	800	806	1010	997	997	997	848	445	629	705	77	132
200	140		8230-39-40	21.75	15.5	40	39	29.25	28.75	28.75	28.75	39.88	20.38	14.25	37	168	400
61	43			552	394	1016	991	743	730	730	730	1013	518	362	940	76	182
340	225		8238-39-40	30.25	24	40	39	37.75	37.25	37.25	37.25	39.88	20.38	22.75	37	218	420
104	69			768	610	1016	991	959	946	946	946	1013	518	578	940	99	191

Specifications subject to change.

Notes:

- Upon request, reels can be supplied with drum lengths other than shown and with disc sizes in other diameters.
- Weights shown in chart are for crank rewind models. ADD these amounts for power rewind models:

	Net (lbs.)	Ship (lbs.)	Net (kg.)	Ship (kg.)
Electric	40	40	18.1	18.1
Hydraulic	20	20	9.1	9.1
Air	20	20	9.1	9.1

- When ordering power rewind models, prefix model number with:

A = Air Rewind EP = Electric Rewind (1/2 HP) HD = Hydraulic Rewind
(Air rewind reels are supplied with control valve and hose; 12v and 24v DC rewind reels are supplied with switch and solenoid; 115v AC rewind reels are not supplied with switch but can be ordered separately; hydraulic rewind reels are not supplied with control valve.)