

Manual or Power Rewind Reels To handle 2" through 3" I.D. hose.

A strong, heavy-duty reel designed for longer lengths and larger diameters of hose through 3" I.D. Rugged, industrial-duty channel frame construction. Versatile reel features a variety of rewind and joint options.

Rewind:

Choose gear-driven crank rewind or chain and sprocket drive powered by an electric, hydraulic or compressed air motor. Gear-driven mechanism with pinion shaft brake can be specified as auxiliary crank rewind on power rewind reels, at extra cost.

Brakes & Locks:

Crank rewind reels will be supplied with a pinion brake and power rewind reels with a comet brake. Other brakes and locking devices may be specified. (See Ordering Guide & Accessory Catalog.)

Inlet:

Standard inlet is a 90° ball bearing swivel joint with 3" female NPT threads.

Outlet:

Standard outlet is a flanged riser with 3" female NPT threads.

Other sizes and/or threads can be furnished and must be specified.

Standard outlet riser and hub assembly are aluminum with iron inlet swivel joint. Optional bronze or aluminum swivel joint and stainless steel hub assembly and riser, are available at extra cost, to meet special product handling requirements.

Optional Rollers:

Rollers may be purchased as accessory items. Specify roller position when ordering. Mounting brackets are necessary. (See Ordering Guide & Accessory Catalog.)

Operating Pressures & Temperatures:

These reels operate at pressures to 300 psi (21 bar), and handle product temperatures from -20° F to +225° F (-29° C to +107° C).

Reels to operate at other pressures and temperatures can be furnished at extra cost.

Chain Clutch-Reduction Units:

These units are recommended for use on reels with 39" diameter or larger discs and/or when increased torque and slower rewind speeds are required. Factory-installed when specified or available as an accessory item for field installation. (See Ordering Guide & Accessory Catalog.)



Finish: Refer to page 4.



Shown with Optional Auxiliary Rewind

Series 9000

Standard Configuration Shown

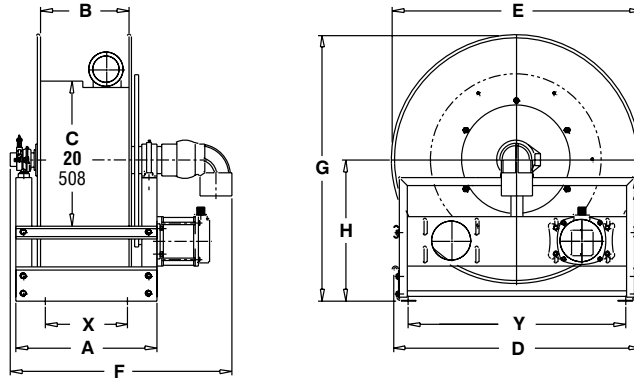
For:

- Suction/Discharge
- High Volume Application
- Bulk Transfer
- Chemical Transfer
- Fueling

Refer to:

Aviation Catalog H-9448-AV
Petroleum Catalog H-9447-FD

Dimensions and capacities



Series 9000

BE SURE TO CHECK DIMENSIONS AND WEIGHTS PRIOR TO ORDERING.
To receive a detailed parts breakdown drawing for Series 9000, request ISO 57.

Hose Capacity of Reel <u>feet</u> m.				Model Number	Reel Dimensions <u>inches</u> mm.												Approx. Weight Crank Rewind <u>lb.</u> kg. See Note 2	
I.D. (in)	2"	2 1/2"	3"		x, y indicate mounting holes. See page 2.												NET	SHIP
I.D. (mm)	51	64	76	For Power Rewind See Note 3	A	B	D	E	F	F	F	F	G	H	X	Y		
O.D. (in)	2 9/16"	3 3/16"	3 3/4"		CRANK	ELEC.	AIR	HYD										
O.D. (mm)	65	81	95															
45	20	20		9326-33-34	17.75	11.5	31.75	31.75	27.75	27.75	27.75	27.75	33.88	18	10.25	27.75	101	171
14	6	6			451	292	806	807	705	705	705	705	861	457	260	705	46	78
70	30	25		9332-33-34	23.75	17.5	31.75	31.75	33.75	33.25	33.25	33.25	33.88	18	16.25	27.75	147	217
21	9	8			603	445	806	807	857	845	845	845	861	457	413	705	67	98
100	45	35		9338-33-34	30.25	24	31.75	31.75	40.25	39.75	39.75	39.75	33.88	18	22.75	27.75	187	257
30	14	11			768	610	806	807	1022	1010	1010	1010	861	457	578	705	85	117
140	60	50		9346-33-34	38.25	32	31.75	31.75	48.25	47.75	47.75	47.75	33.88	18	30.75	27.75	237	372
43	18	15			972	813	806	807	1226	1213	1213	1213	861	457	781	705	108	169
75	40	35		9326-39-40	17.75	11.5	40	39	27.75	27.25	27.25	27.25	40.38	20.88	10.25	37	165	420
23	12	11			451	292	1016	991	705	692	692	692	1026	530	260	940	75	191
120	60	55		9332-39-40	23.75	17.5	40	39	33.75	33.25	33.25	33.25	40.38	20.88	16.25	37	201	460
37	18	17			603	445	1016	991	857	845	845	845	1026	530	413	940	91	210
185	90	80		9338-39-40	30.25	24	40	39	40.25	39.75	39.75	39.75	40.38	20.88	22.75	37	239	480
56	27	24			768	610	1016	991	1022	1010	1010	1010	1026	530	578	940	108	218
200	130	115		9334-45-46	26.25	20	46	45	36.25	35.75	35.75	35.75	46.38	23.88	18.75	43	361	525
61	40	35			667	508	1168	1143	921	908	908	908	1178	607	476	1092	164	239

Specifications subject to change.

Notes:

- Upon request, reels can be supplied with drum lengths other than shown and with disc sizes in other diameters.
- Weights shown in chart are for crank rewind models. ADD these amounts for power rewind models:

	Net (lbs.)	Ship (lbs.)	Net (kg.)	Ship (kg.)
Electric	40	40	18.1	18.1
Hydraulic	20	20	9.1	9.1
Air	20	20	9.1	9.1

- When ordering power rewind models, prefix model number with:

A = Air Rewind EP = Electric Rewind (1/2 HP) HD = Hydraulic Rewind
(Air rewind reels are supplied with control valve and hose; 12v and 24v DC rewind reels are supplied with switch and solenoid; 115v AC rewind reels are not supplied with switch but can be ordered separately; hydraulic rewind reels are not supplied with control valve.)