

# Series 900

## Spring Rewind Reels To handle 1-1/4" or 1-1/2" I.D. hose.

The 900 series has rollformed channel frame construction to handle 1-1/4" or 1-1/2" ID hose.

### Rewind:

A heavy-duty spring motor provides self-contained rewind power. A non sparking ratchet assembly locks the reel when the desired length of hose has been payed out. A pull on the hose unlocks the reel and the spring motor retracts the hose. A declutching arbor is provided to prevent damage from reverse winding.

### Inlet:

Standard inlet is 90° swivel joint with 1-1/2" female NPT threads and 2" victaulic groove.

### Outlet:

Standard outlet is 1-1/2" female NPT threads.

**Other sizes and/or threads can be furnished and must be specified.**

### Operating Pressures & Temperatures:

These reels operate at pressures to 600 psi (41 bar) and handle product temperatures from -60° F to +175° F (-51° C to +79° C).

**Reels to operate at other pressures and temperatures can be furnished at extra cost.**

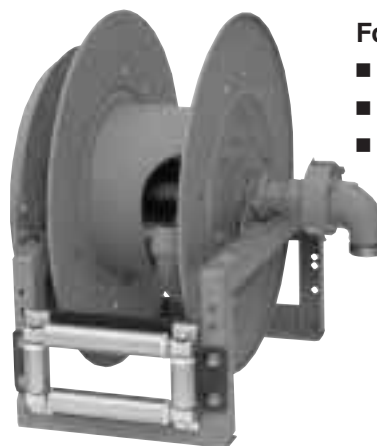
### Rollers:

All models are supplied with a 4-way roller assembly. Roller position must be specified. (See Ordering Guide & Accessory Catalog.)

### Hose Stop:

A hose stop should be used to prevent damage to rollers and nozzles and to permit adjustment of free hose length. (See Ordering Guide & Accessory Catalog.)

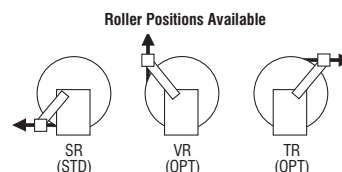
**Finish:** Refer to page 4.



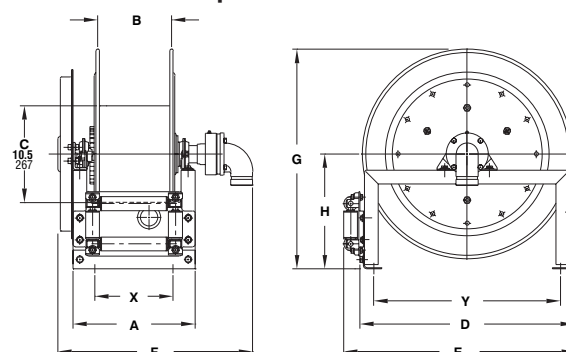
For:

- Bulk Transfer
- Fuel Dispensing
- Suction/Discharge

**Series 900**  
Standard Configuration Shown



### Dimensions and capacities



### BE SURE TO CHECK DIMENSIONS AND WEIGHTS PRIOR TO ORDERING.

To receive a detailed parts breakdown drawing for Series 900, request ISO 29.

Hose Capacity of Reel			Model Number	Reel Dimensions								Approx. Weight		Roller Assy Supplied on Standard Models	
feet	m.			inches								lb.	kg.		
I.D. (in)	1 1/4"	1 1/2"	x, y indicate mounting holes. See page 2.											NET	SHIP
I.D. (mm)	32	38	A	B	D	E	F	G	H	X	Y				
O.D. (in)	1 3/16"	2 1/16"													
O.D. (mm)	46	52													
40	25		922-23-24B	15.25	10	23.25	25.25	24	23.88	12.5	10.5	20.25	104	139	R310
12	8			387	254	591	641	610	607	318	267	514	47	63	
50	40		920-25-26A	13.25	8	25	27	22.75	25.88	13.5	8.5	22	127	162	R308
15	12			337	203	635	686	578	657	343	216	559	58	73	
75	50		922-30-31A	15.25	10	28.5	30.5	24.75	31.38	17	10.5	25.5	156	191	R310
23	15			387	254	724	775	629	797	432	267	648	71	87	

Specifications subject to change.

### Notes:

1. Reel models and capacities shown are for standard drag applications; for vertical lift or constant tension applications consult factory.
2. Other sizes, from standard components, available on request.