

STORAGE REELS

Manual or Power Rewind Storage Reels To handle single 1/4" through 1-1/2" O.D. hose.

Manual Rewind Only:

Series C3200 reels are designed for storage of long lengths of hose, cable, rope, wire or other materials. A 4-1/2" x 7" opening in the drum permits end of hose, etc., to be inserted to initiate winding.

Manual or Power Rewind:

Series C1500 reels are designed for storage of long lengths of hose, cable, rope, wire or other materials. A 1-1/8" x 2-3/8" (28.6 mm x 60.3 mm) opening in the drum permits end of hose, etc. to be inserted to initiate winding.

Rewind:

Series C3200 – Choose disc rewind or removable direct crank rewind.

Series C1500 – direct crank rewind, permanently attached to axle, is standard. A removable crank option is available. Also available with chain and sprocket rewind powered by electric, compressed air, or hydraulic motor.

Brakes & Locks:

Series C3200 – supplied with a spring actuated pin lock.

Series C1500 – supplied with cam lock brake and an adjustable spring tension brake on manual rewind models only. Other brakes or locking devices may be specified. (See Ordering Guide & Accessory Catalog.)

Options:

Divider discs can be placed at almost any point on the drum. Be sure to specify spacing of discs on your order. Larger drum diameters are available for materials with larger bend radii. With this option, the reel capacity is reduced.

Optional Rollers:

Rollers may be purchased as accessory items. Specify roller position when ordering. Mounting brackets are necessary. (See Ordering Guide & Accessory Catalog.)

Finish: Refer to page 4.

NOTE: THESE REELS HAVE NO LIVE FLUID CONNECTIONS. FOR STORAGE ONLY.

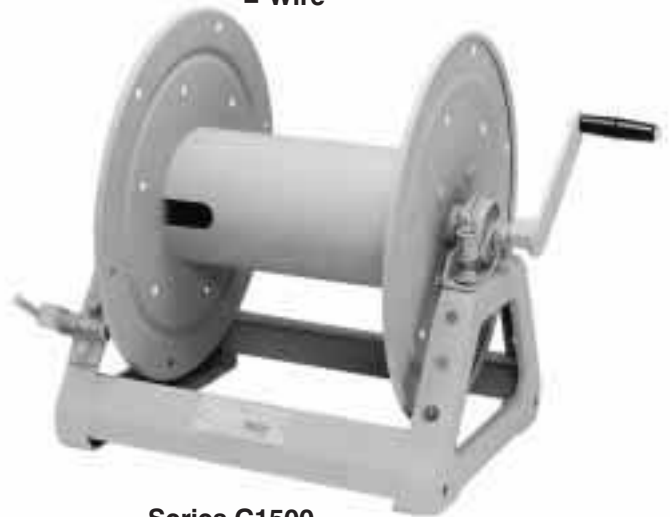


Shown with Optional Crank Handle

Series C3200
Standard Configuration Shown

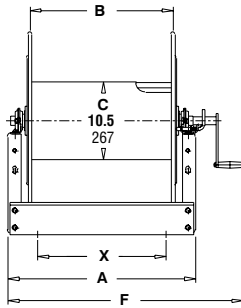
For Storage Of:

- Hose
- Cable
- Rope
- Wire

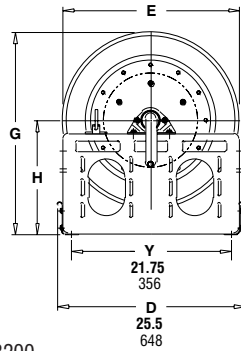


Series C1500
Standard Configuration Shown

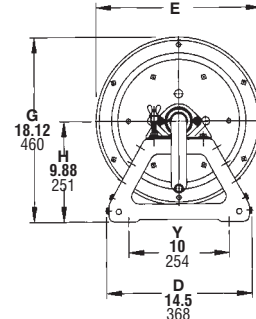
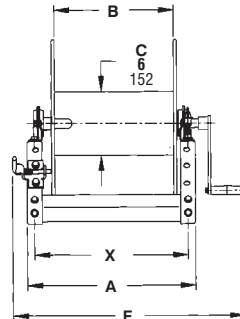
Dimensions and capacities



Series C3200



Series C1500



BE SURE TO CHECK DIMENSIONS AND WEIGHTS PRIOR TO ORDERING.

To receive a detailed Storage Reels parts breakdown drawing for Series C3200, request ISO 117, for Series C1500, request ISO 179.

O.D. (in)	Capacity of Reel						Model Number	Reel Dimensions												Approx. Weight		
	$1/4''$	$1/2''$	$3/4''$	1"	$1 1/4''$	$1 1/2''$		A	B	E	E	E	E	F	F	F	F	G	H	X	NET	SHIP
O.D. (mm)	feet m.							inches mm.												lb. kg.		
6	1000	450	225	125	90		C3218-25-26	15	9.5	24.75	-	-	-	22	-	-	-	27.88	15.5	7	85	127
13	305	137	69	38	27			381	241	629	-	-	-	559	-	-	-	708	394	178	39	58
19	1000	500	325	200			C3228-25-26	25.5	20	24.75	-	-	-	32.5	-	-	-	27.88	15.5	17.5	109	151
25	305	152	99	61				648	508	629	-	-	-	826	-	-	-	708	394	445	49	68
32	1300	650	400	275			C3234-25-26	31.5	26	24.75	-	-	-	38.5	-	-	-	27.88	15.5	23.5	122	164
38	396	198	122	84				800	660	629	-	-	-	978	-	-	-	708	394	597	55	74
45	975	625	400				C3246-25-26	43.5	38	24.75	-	-	-	50.5	-	-	-	27.88	15.5	35.5	149	199
51	297	191	122					1105	965	629	-	-	-	1283	-	-	-	708	394	902	68	90
58	900	525	375				C3228-30-31	25.5	20	28.75	-	-	-	32.5	-	-	-	29.88	15.5	17.5	120	170
64	274	160	114					648	508	730	-	-	-	826	-	-	-	759	394	445	54	77
71	1100	675	500				C3234-30-31	31.5	26	28.75	-	-	-	38.5	-	-	-	29.88	15.5	23.5	133	183
77	335	206	152					800	660	730	-	-	-	978	-	-	-	759	394	597	60	83
84	750	475	350				C3224-33-34	21	15.5	31.75	-	-	-	28	-	-	-	32.38	16.5	13	120	170
90	229	145	107					533	394	806	-	-	-	711	-	-	-	822	419	330	54	77
97	1200	925					C3246-33-34	43.5	38	31.75	-	-	-	50.5	-	-	-	32.38	16.5	35.5	170	248
103	366	282						1105	965	806	-	-	-	1283	-	-	-	822	419	902	77	112
110	1300	325	150	75	-	-	*C1514-17-18	11	6	16.5	19	19	19	16	15.75	15.25	15.75	18.12	9.88	9.5	23	30
116	396	99	46	23	-	-		279	152	419	483	483	483	406	400	387	400	460	251	241	10	14
123	650	300	150	-	-	-	*C1520-17-18	17	12	16.5	19	19	19	22	21.75	21.25	21.75	18.12	9.88	15.5	25	32
129	198	91	46	-	-	-		432	305	419	483	483	483	559	552	540	552	460	251	394	11	15
136	1000	450	225	-	-	-	*C1526-17-18	23	18	16.5	19	19	19	28	27.75	27.25	27.75	18.12	9.88	21.5	27	34
142	305	137	69	-	-	-		584	457	419	483	483	483	711	705	692	705	460	251	546	12	15
149	1200	550	275	-	-	-	*C1530-17-18	27	22	16.5	19	19	19	32	31.75	31.25	31.75	18.12	9.88	25.5	29	36
155	366	168	84	-	-	-		686	559	419	483	483	483	813	806	794	806	460	251	648	13	16

Specifications subject to change.

Notes:

- Upon request, reels can be supplied with drum lengths other than shown and with disc sizes in other dimensions.
- Dimensions reflect pressed frames.
- Weights shown in chart for C1500 series are for crank rewind models. ADD these amounts for power rewind models.

	Net (lbs.)	Ship (lbs.)	Net (kg.)	Ship (kg.)
Electric	18	18	8.2	8.2
Hydraulic	15	15	6.8	6.8
Air	15	15	6.8	6.8

- When ordering power rewind models (C1500 only)

Prefix model number with:

A = Air Rewind E = Electric Rewind HD = Hydraulic Rewind

(Air rewind reels are supplied with control valve and hose; 12v and 24v DC rewind reels are supplied with switch and solenoid; 115v AC rewind reels are not supplied with switch but can be ordered separately; hydraulic rewind reels are not supplied with control valve.)

- Series C3200 requires 3 1/2" clearance to remove crank handle.

- Subtract 5" from 'F' dimension for disc rewind on C3200 Series.

*UPS shippable