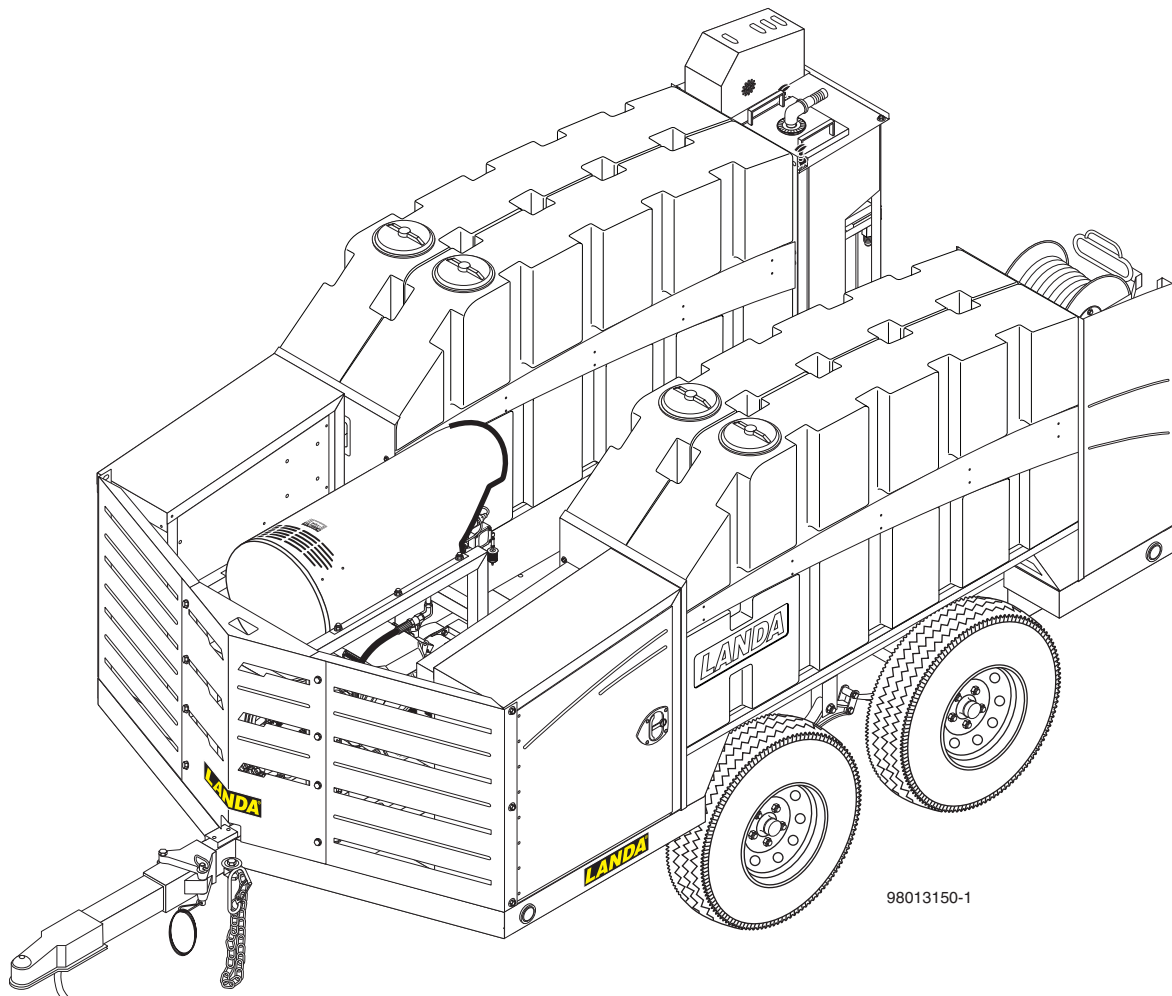


LANDA®

SERVICE MANUAL

■ ECOS 7000



98013150-1



For technical assistance or the dealer nearest you,
consult our web page at www.landa.com

9.801-315.0

| | |
|---|-------|
| Introduction & Safety | 5 |
| Checklist and What to Check | 5-6 |
| Trailer Component Identification Views | 7 |
| Hose Routing | 8-9 |
| Chassis Exploded View and Parts List | 10-11 |
| Left Side (Driver Side) Water Tank Exploded View and Parts List | 12-13 |
| Right Side (Passenger Side) Water Tank Exploded View & Parts List | 14-15 |
| Power Platform Exploded View and Parts List | 16-17 |
| Coil Exploded View and Parts List | 18-19 |
| Burner Exploded View and Parts List | 20 |
| Pump Assembly Exploded View and Parts List | 21 |
| Heat Exchanger Exploded View and Parts List | 22-23 |
| Control Panel Assembly Exploded View and Parts List | 24 |
| Transformer Box Assembly Exploded View and Parts List | 25 |
| Valves Exploded View and Parts List | 26 |
| Gas and Diesel Tanks Exploded View and Parts List | 27 |
| Control Box Exploded View and Parts List | 28 |
| Left Tank Box Exploded View and Parts List | 29 |
| Vacuum Assembly Exploded View and Parts List | 30-32 |
| Hose Reel and Rear Assembly Exploded View and Parts List | 33 |
| Assembly Exploded View and Parts List | 34-35 |
| Vacuum Hose Storage Cover Assy Exploded View and Parts List | 36 |
| Control Cabinet Assembly Exploded View and Parts List | 37 |
| Vacuum Hose Assembly Exploded View and Parts List | 38 |
| VBR8 Unloader Exploded View and Parts List | 39 |
| VRT3 Unloader and Exploded View Parts List | 40 |

CONTENTS

| | |
|---|-------|
| Hose and Spray Gun Exploded View and Parts List | 41 |
| Wiring Diagrams | 42-43 |
| LT.1 Pump Exploded View and Parts List | 44-45 |
| Troubleshooting | 46 |
| Preventative Maintenance | 47 |
| Warranty | |

Model Number _____

Serial Number _____

Date of Purchase _____

The model and serial numbers will be found on a decal attached to the machine. You should record both serial number and date of purchase and keep in a safe place for future reference.

INTRODUCTION

Thank you for purchasing a Landa trailer.

This manual is designed to provide information to help you to understand, use and maintain your Landa ECOS 7000 trailer.

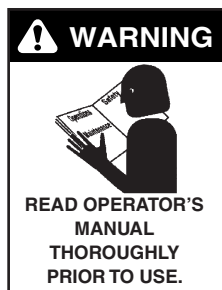
Owner/User Responsibility

The owner and/or user must have an understanding of the manufacturer's operating instructions and warnings before using this equipment. Warning information should be emphasized and understood. If the operator is not fluent in English, the manufacturer's instructions and warning shall be read to and discussed with the operator in the operator's native language by the purchaser/owner, making sure that the operator comprehends its contents.

Owner and/or user must study and maintain for future reference the manufacturer's instructions.

This manual should be considered a permanent part of the equipment and should remain with it if unit is resold. When ordering parts, please specify model and serial number.

MACHINE SAFETY



WARNING: To reduce the risk of injury, read operating instructions carefully before using.

1. Read the owner's manual thoroughly. Failure to follow instructions could cause malfunction of the unit and result in death, serious bodily injury and/or property damage.
2. The best insurance against an accident is precaution and knowledge of this equipment.

REPORTING SAFETY DEFECTS

If you believe that your vehicle has a defect which could cause a crash or could cause injury or death, you should immediately inform the National Highway Traffic Safety Administration (NHTSA) in addition to notifying Landa.

If NHTSA receives similar complaints, it may open an investigation, and if it finds that a safety defect exists in a group of vehicles, it may order a recall and remedy campaign. However, NHTSA cannot become involved in individual problems between you, your dealer or Landa.

To contact NHTSA, you may either call the Auto Safety Hotline toll-free at 1-800-424-9393 (or 366-0123 in Washington, DC area) or write to NHTSA, U.S. Department of Transportation, Washington, DC 20590. You can also obtain other information about motor vehicle safety from the Hotline.

CHECKLIST

Before Your First Trip

- Tire Pressure and Tire Condition
- Wheel Lugs*
- Bearing Lube and Tightness
- Burnish Brakes (See page 6)
- Brakes/Brake Controllers
- Breakaway Battery Charge
- Hitch
- Safety Chains
- 12V Running Lights
- Distribution and Security
- All Jacks "Up" in Travel Position

* Check lug nuts for tightness before initial trip, at 10 miles, 25 miles and 50 miles. Recheck every 3 months or 3000 miles.

Your Landa Dealer, in all probability, checked each of these points before you took delivery. However, these are key things you should recheck before taking your trailer on the road for the first time.

WHAT TO CHECK AND HOW TO CHECK

Tire Pressure

Proper air pressure for your tires is printed on the sidewall. Check pressure while tires are cold. Do not raise or lower pressure to meet load. Pressure other than recommended pressure will lead to excessive tire wear or tire failure. Balancing recommended. Preferred balancing method is to center off of stud holes, since 13" through 16.5" wheels are not hub piloted.

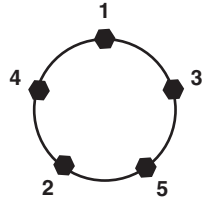
Wheels

Check wheels for hole elongation or "out of round". This condition can be caused by lug nuts not being tight or being too tight. Trailer wheels can be damaged by chuck holes or curb jumping. You may not be aware of the road shock to the wheels without periodic checks. Replace any wheel that is bent. Replace any wheel if you see elongation of the bolt holes.

Wheel Lugs

Wheel lug nuts must be tightened with a torque wrench. Refer to the chart below for proper torque

1. Start all bolts or nuts by hand to prevent cross threading.
2. Tighten bolts or nuts following sequence at right.
3. The tightening of the fasteners should be done in stages. Following the recommended sequence, tighten fasteners per wheel torque chart below.
4. Wheel nuts/bolts should be torqued before first road use and after each wheel removal. Check and re-torque after the first 10 miles, 25 miles and again at 50 miles. Check periodically thereafter.



Wheel Torque Requirements

TORQUE SEQUENCE

| WHEEL SIZE | 1st Stage | 2nd Stage | 3rd Stage |
|------------|-----------|-----------|-----------|
| 14" | 20 - 25 | 50 - 60 | 90 - 120 |

Ball Coupler Hitches

Coupler assembly includes a latch lever and latch lever safety pin or hitch pin. Be sure the latch lever is locked and the pin properly secured before moving your trailer. The pin can be engaged fully only if ball is properly seated in the coupler.

Hitch Balls

These come in a variety of diameters and capacities. The GVWR (General Vehicle Weight Rating) capacity is always stamped on the ball. Use a 2" ball. **Always** be sure the hitch ball at least matches the GVWR of your trailer. **Always** be sure the diameter of the hitch ball matches the coupler diameter. **Never** attempt to tow your trailer with improper size ball. **Always** keep ball greased to avoid excessive wear. Replace worn hitch ball or locking dogs promptly.

Tires

Before mounting tires onto wheels make certain that the rim size and contour is approved for the tire as shown in the Tire and Rim Association Yearbook or the tire manufacturer's catalog. Also make sure the tire will carry the rated load. If the load is not equal on all tires due to trailer weight distribution, use the tire rated for the heaviest wheel position.

Note: The capacity rating molded into the sidewall of the tire is not always the proper rating for the tire if used in a trailer application. Use the following guideline:

1. LT and ST tires: use the capacity rating molded into the tire.
2. Passenger Car Tires: Use the capacity rating molded into the tire sidewall divided by 1.10.

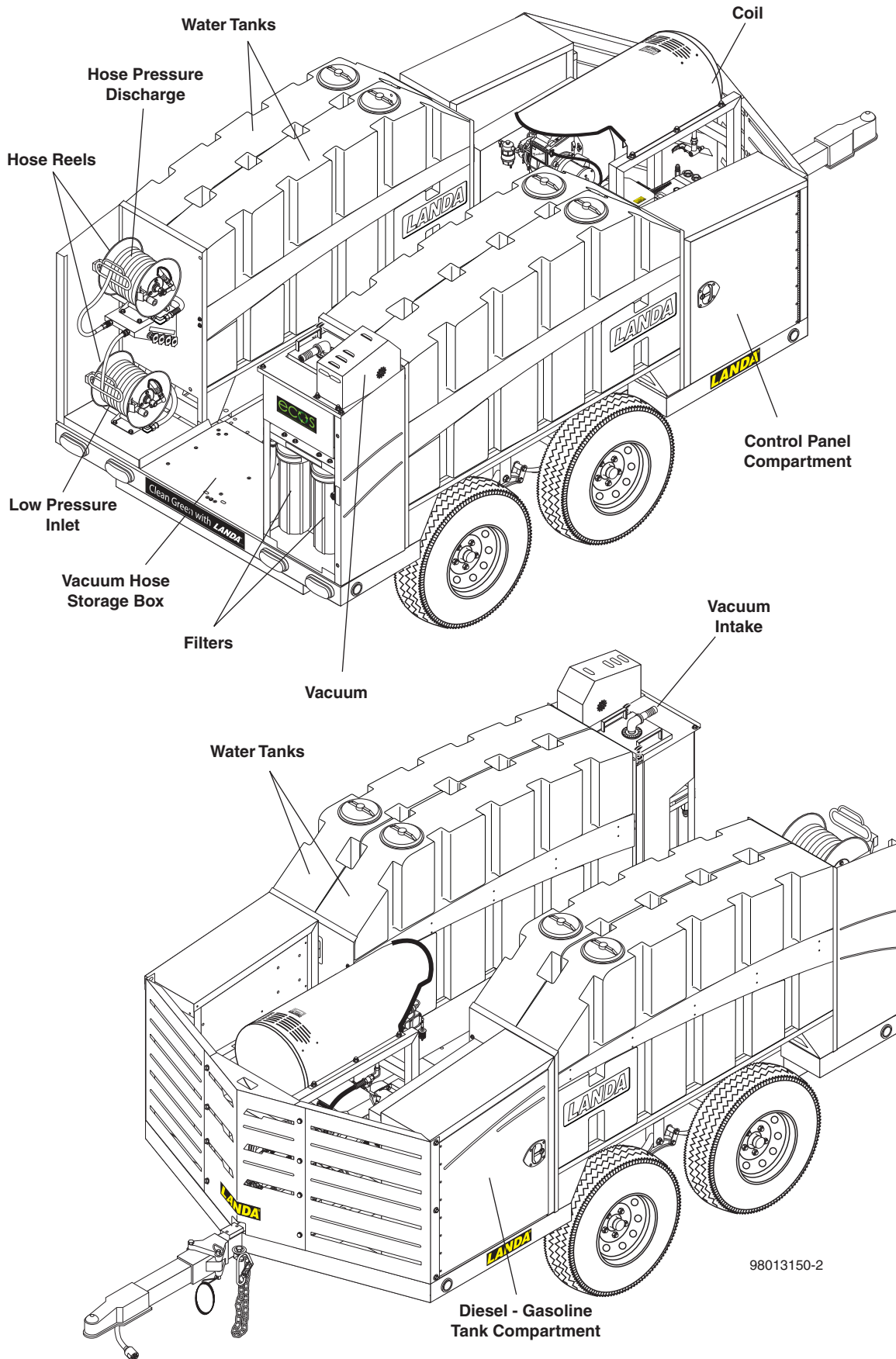
Use tire mounting procedures as outlined by the Rubber Manufacturer's Association or the tire manufacturers.

Tire inflation pressure is the most important factor in tire life. Inflation pressure should be as recommended by the manufacturer for the load. Pressure should be checked cold before operation. Do not bleed air from tires when they are hot. Check inflation pressure weekly during use to insure the maximum tire life and tread wear. The following tire wear diagnostic chart will help you pinpoint the causes and solutions of tire wear problems.

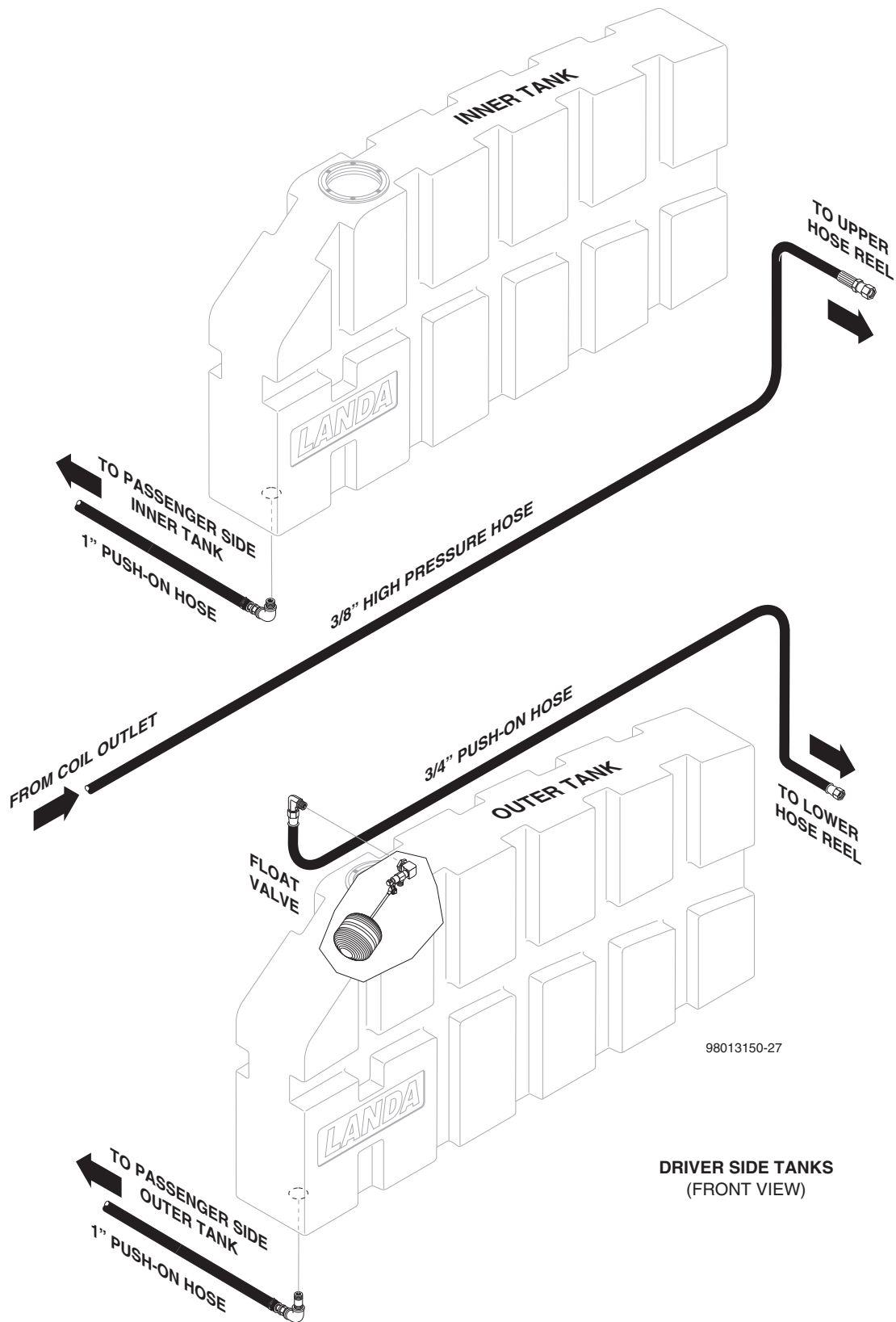
Note: Tire wear should be checked frequently because once a wear pattern becomes firmly established in a tire it is difficult to stop, even if the underlying cause is corrected.

| WEAR PATTERN | CAUSE | ACTION |
|--------------------|-------------------------------|---|
| Center Wear | Over Inflation | Adjust pressure to particular load per tire catalog. |
| Edge Wear | Under Inflation | Adjust pressure to particular load per tire catalog. |
| Side Wear | Loss of camber or overloading | Make sure load doesn't exceed axle rating. Align at alignment shop. |
| Toe Wear | Incorrect toe-in | Align at alignment shop. |
| Cupping | Out of balance | Check bearing adjustment and balance tires. |
| Flat Spots | Wheel lockup & tire skidding | Avoid sudden stops when possible and adjust brakes. |

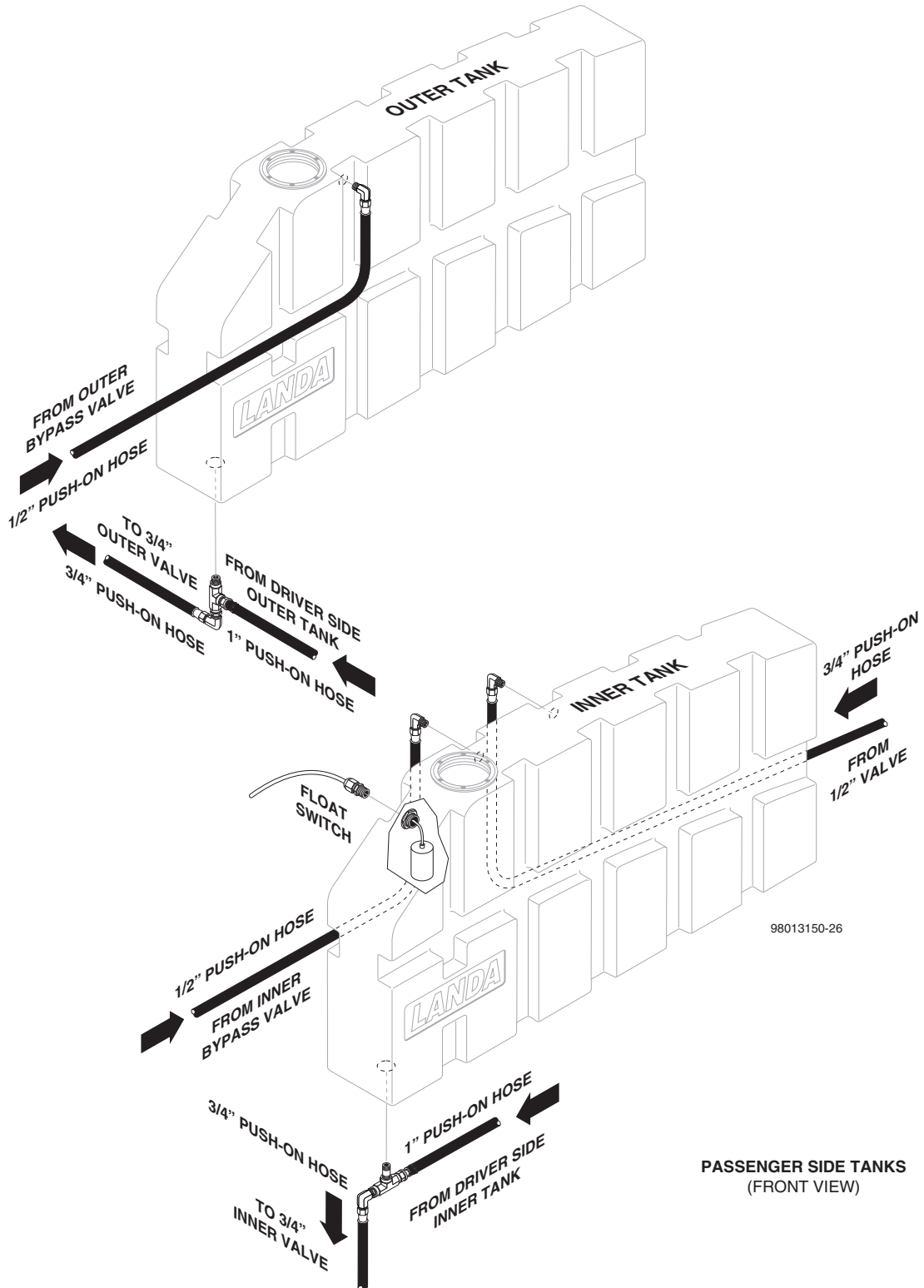
TRAILER COMPONENT IDENTIFICATION VIEWS



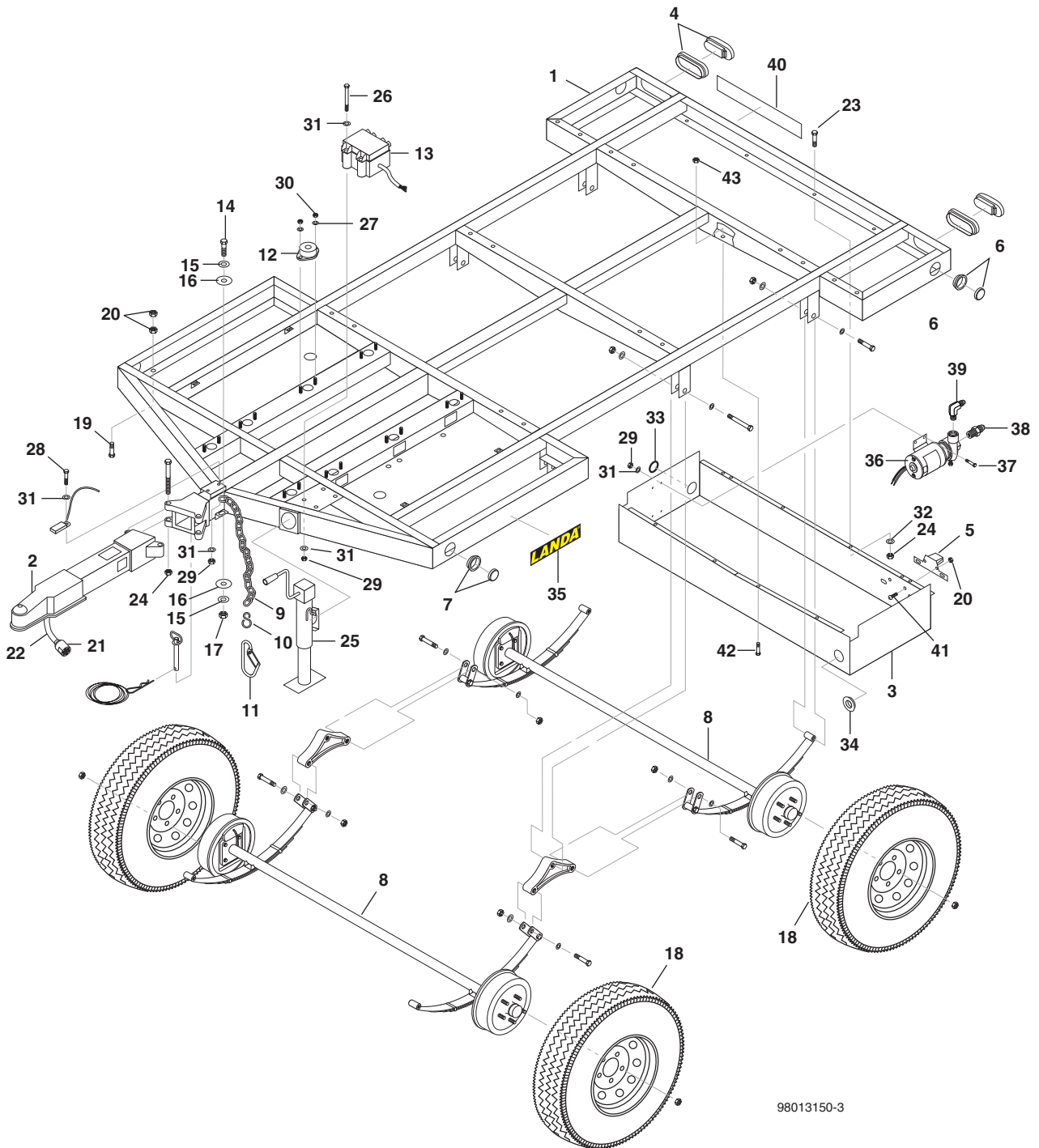
HOSE ROUTING (DRIVER'S SIDE)



HOSE ROUTING (PASSENGER SIDE)



CHASSIS EXPLODED VIEW

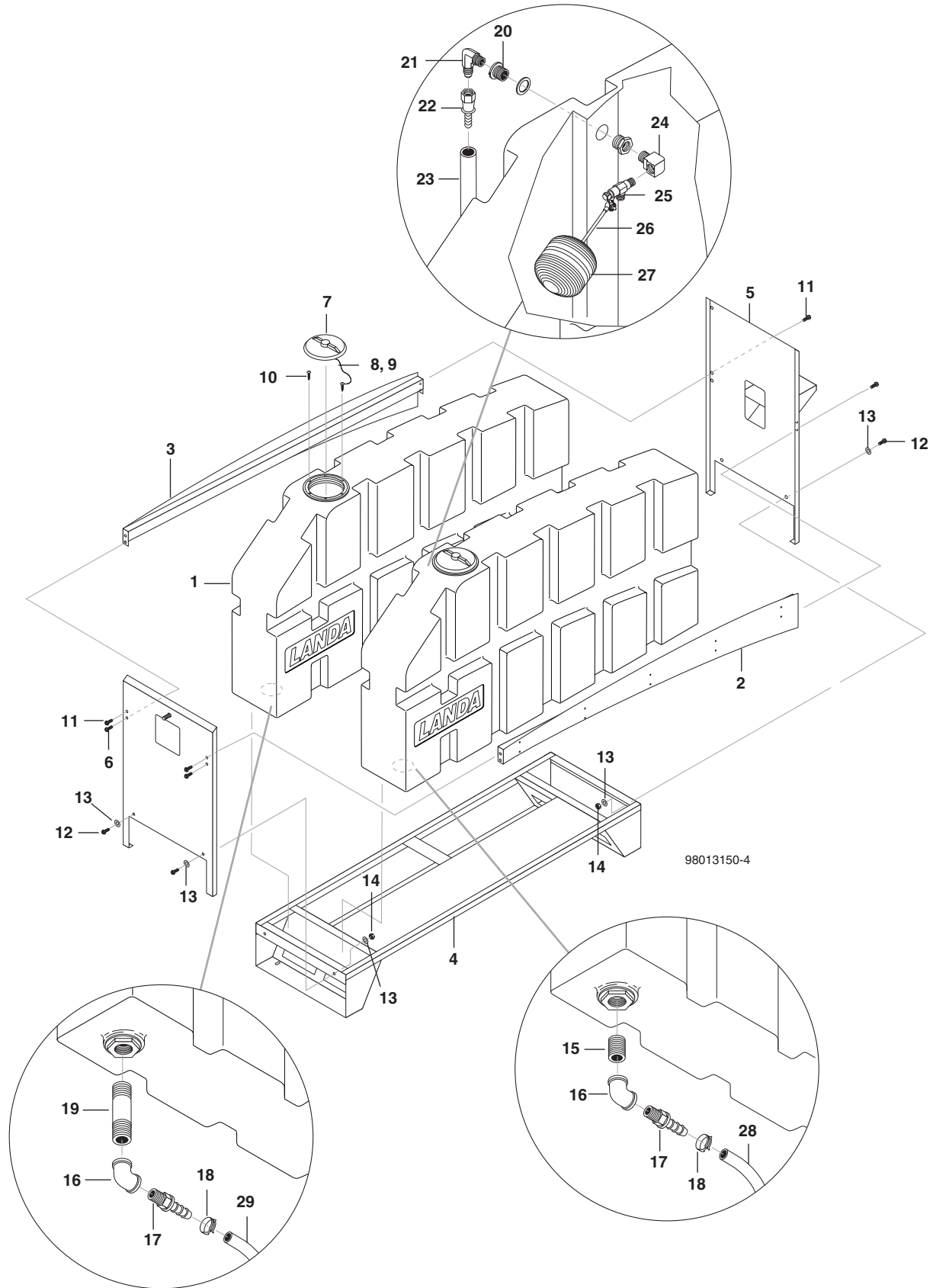


98013150-3

CHASSIS EXPLODED VIEW PARTS LIST

| ITEM | PART NO. | DESCRIPTION | QTY | ITEM | PART NO. | DESCRIPTION | QTY |
|------|-------------|--------------------------------------|-------|------|-------------|--|-----|
| 1 | 8.919-173.0 | Wlmt, ECOS Trailer Frame | 1 | 23 | 9.802-767.0 | Screw, 3/8" x 3/4" NC, Whiz Loc Flange | 4 |
| 2 | 8.919-170.0 | Wlmt, Coupler, 3 x 4 Fold-Away Hinge | 1 | 24 | 9.802-779.0 | Nut, 3/8" ESNA, NC | 4 |
| 3 | 8.919-218.0 | Box, Vacuum Hose Storage | 1 | 25 | 8.751-056.0 | Jack, Weld-On Bracket, Sidewind | 1 |
| 4 | 8.725-530.0 | Lamp, Tail, 3-Way | 2 | 26 | 8.718-611.0 | Bolt, 1/4-20 x 3-1/2", HH Tap Zinc | 4 |
| 5 | 8.725-533.0 | Lamp, License w/Holder | 1 | 27 | 8.718-980.0 | Washer, 5/16" Flat | 16 |
| 6 | 8.725-531.0 | Lamp, Side Marker, Red | 2 | 28 | 9.802-700.0 | Bolt, 1/4-20 x 3/4", NC | 1 |
| 7 | 8.725-532.0 | Lamp, Side Marker, Amber | 2 | 29 | 9.802-773.0 | Nut, 1/4-20 ESNA NC | 9 |
| 8 | 8.750-645.0 | Axle Kit 65.5", Elec Brakes, 2 Axles | 1 | 30 | 9.802-776.0 | Nut, 5/16" ESNA, NC | 16 |
| 9 | 8.707-497.0 | Chain, 5/16" Zinc Plated, 70' RL | 8 | 31 | 9.802-802.0 | Washer, 1/4" SAE, Flat Zinc | 14 |
| 10 | 8.707-498.0 | Hook, "S", 5/16" Zinc Plated | 2 | 32 | 9.802-807.0 | Washer, 3/8" SAE, Flat Zinc | 4 |
| 11 | 8.726-136.0 | Hook, Latching | 2 | 33 | 8.706-546.0 | Grommet, 1-3/4" x 2-1/2" | 1 |
| 12 | 8.706-505.0 | isolator, Vibration Mnt, 150 lb | 8 | 34 | 9.802-103.0 | Bushing, 5/8" Snap | 1 |
| 13 | 8.750-681.0 | Trailer Breakaway, Kit w/Battery | 1 | 35 | 8.916-090.0 | Label, Landa Logo, 11 x 3.5" | 2 |
| 14 | 8.718-661.0 | Bolt, 3/8" x 1-1/2", NC,HH, SS | 2 | 36 | 8.750-653.0 | Pump, Hypro Centrifugal, 12V, 16 GPM | 1 |
| 15 | 9.802-808.0 | Washer, 3/8" SAE, SS | 4 | 37 | 9.802-754.0 | Screw, 1/4" x 1/2" NC, Whiz | 4 |
| 16 | 9.802-812.0 | Washer, 3/8" x 1-1/2", Fender | 4 | 38 | 8.706-899.0 | Nipple, 3/4" JIC x 3/4" | 1 |
| 17 | 9.802-780.0 | Nut, 3/8" Stainless, ESNA | 2 | 39 | 9.803-557.0 | Elbow, 3/4" SAE x 3/4", 90°, Brass | 1 |
| 18 | 8.750-687.0 | Chrome Wheel/Tire ST205/75R15 | 4 | 40 | 9.807-358.0 | Label, Landa Slogan | 1 |
| 19 | 8.718-760.0 | Screw, 10/32" x 5/8" Phil Pan, SS | 6 | 41 | 8.718-813.0 | Screw, 10/32 x 1/2" SOC SS | 2 |
| 20 | 9.802-696.0 | Nut, 10/32" NF ST ST Kep | 15 | 42 | 9.802-769.0 | Screw, 3/8" x 1-3/4" Whiz | 4 |
| 21 | 8.707-511.0 | Plug, 7-Prong | 1 | 43 | 9.802-781.0 | Nut, 3/8 x Whiz Loc | 4 |
| 22 | 9.802-445.0 | Wrap, Spiral, 1/2" Black /FT 250/RL | 5 ft. | | | | |

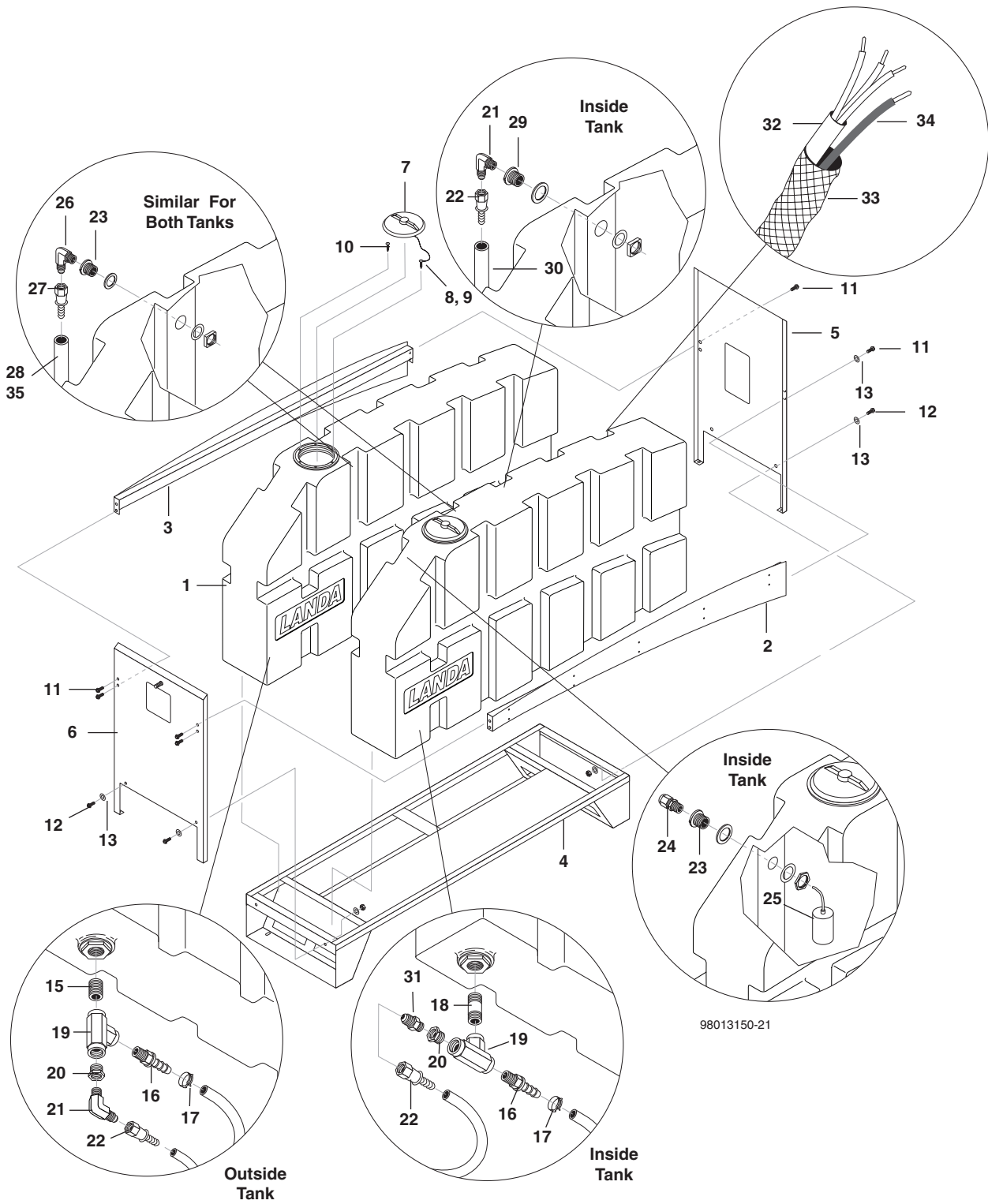
LEFT SIDE (DRIVER SIDE) WATER TANK EXPLODED VIEW



LEFT SIDE (DRIVER SIDE) WATER TANK PARTS LIST

| ITEM | PART NO. | DESCRIPTION | QTY |
|------|-------------|--|--------|
| 1 | 8.750-983.0 | Tank, 100 Gallon Water | 2 |
| 2 | 8.919-198.0 | Wlmt, Tank Support, Drvr Side | 1 |
| 3 | 8.919-199.0 | Wlmt, Tank Support, Pass Side | 1 |
| 4 | 8.919-186.0 | Wlmt, Tank Base, Fender Well, Drvr Side | 1 |
| 5 | 8.919-299.0 | Wlmt, Rear Tank Support, Hose Reel | 1 |
| 6 | 8.919-301.0 | Wlmt, Support, Tank End, Front | 1 |
| 7 | 8.600-262.0 | Access Cover, Clear 6" w/Rim | 2 |
| 8 | 8.624-608.0 | Lanyard, 18.0 w/Loop & Eye | 2 |
| 9 | 8.718-929.0 | Screw, #6 x 3/8" Phil Pan Sheet Metal | 2 |
| 10 | 8.718-934.0 | Screw, #8 x 1", Phil Pan Sheet Metal | 12 |
| 11 | 9.802-769.0 | Screw, 3/8" x 1-3/4", Whiz Loc Flange | 8 |
| 12 | 9.802-720.0 | Bolt, 3/8" x 1", NC | 4 |
| 13 | 9.802-807.0 | Washer, 3/8", SAE, Flat Zinc | 8 |
| 14 | 9.802-779.0 | Nut, 3/8", Esna, NC | 4 |
| 15 | 8.705-979.0 | Nipple, 1" Close Galv | 1 |
| 16 | 8.706-150.0 | Elbow, 1" 150WP PL | 2 |
| 17 | 8.730-404.0 | Pipe, Barbed Male NPT 1" Galv | 2 |
| 18 | 9.803-629.0 | Clamp, Screw, 9/16"W, 1-1/2"D, SS | 2 |
| 19 | 8.706-018.0 | Nipple, 1" x 4", Galv." | 1 |
| 20 | 9.802-052.0 | Bulkhead, 3/4" Polypro | 1 |
| 21 | 9.803-557.0 | Elbow, 3/4" SAE x 3/4", 90°, Brass | 1 |
| 22 | 9.802-152.0 | Swivel, 3/4" SAE Fem, Push-On | 1 |
| 23 | 9.802-261.0 | Hose, 3/4" Push-On, /Ft | 9 ft. |
| 24 | 8.706-181.0 | Elbow, Street 3/4" Galv | 1 |
| 25 | 8.749-329.0 | Float Valve, 3/4" Kerick | 1 |
| 26 | 9.802-158.0 | Stem, 4" Float | 1 |
| 27 | 8.706-512.0 | Ball, Float, Black Plastic | 1 |
| 28 | 9.802-262.0 | Hose, 1" Push-On | 62 in. |
| 29 | 9.802-262.0 | Hose, 1" Push-On | 52 in. |

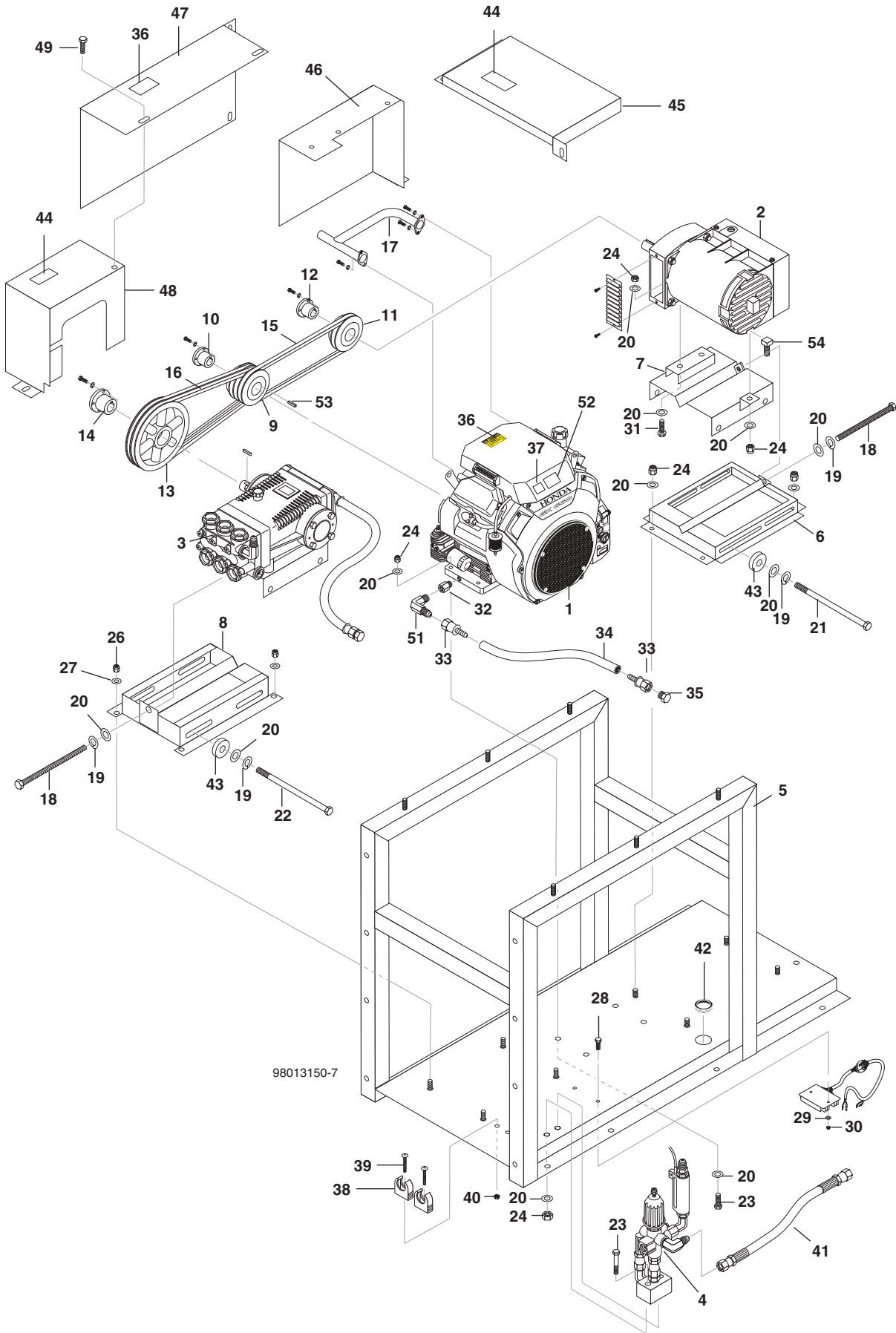
RIGHT SIDE (PASSENGER) WATER TANK EXPLODED VIEW



RIGHT SIDE (PASSENGER SIDE) WATER TANK PARTS LIST

| ITEM | PART NO. | DESCRIPTION | QTY |
|------|-------------|--|--------|
| 1 | 8.750-983.0 | Tank, 100 Gallon Water | 2 |
| 2 | 8.919-198.0 | Wlmt, Tank Support, Drvr Side | 1 |
| 3 | 8.919-199.0 | Wlmt, Tank Support, Pass Side | 1 |
| 4 | 8.919-186.0 | Wlmt, Tank Base, Fender Well | 1 |
| 5 | 8.919-300.0 | Wlmt, Support, Rear Tank End, Vac Side | 1 |
| 6 | 8.919-301.0 | Wlmt, Support, Tank End, Front | 1 |
| 7 | 8.600-262.0 | Access Cover Clear 6" w/Rim | 2 |
| 8 | 8.624-608.0 | Lanyard, 18.0 w/Loop & Eye | 2 |
| 9 | 8.718-929.0 | Screw, #6 x 3/8" Phil Pan Sheet Metal | 2 |
| 10 | 8.718-934.0 | Screw, #8 x 1", Phil Pan Sheet Metal | 12 |
| 11 | 9.802-720.0 | Bolt, 3/8" x 1", NC | 8 |
| 12 | 9.802-767.0 | Screw, 3/8" x 3/4" NC, Whiz Loc Flange | 4 |
| 13 | 9.802-807.0 | Washer, 3/8", SAE, Flat Zinc | 8 |
| 14 | 9.802-779.0 | Nut, 3/8", ESNA, NC | 4 |
| 15 | 8.705-979.0 | Nipple, 1" Close Galv | 1 |
| 16 | 8.730-404.0 | Pipe, Barbed, Male NPT 1" Galv | 2 |
| 17 | 9.803-629.0 | Clamp, Screw, 9/16" W, 1-1/2" D, SS | 2 |
| 18 | 8.706-018.0 | Nipple, 1" x 4", Galv | 1 |
| 19 | 8.751-249.0 | Tee, 1" NPT, Galv | 2 |
| 20 | 8.706-139.0 | Bushing, Redc 1 x 3/4 PL | 1 |
| 21 | 9.803-557.0 | Elbow, 3/4" SAE x 3/4" JIC, 90°, Brass | 2 |
| 22 | 9.802-152.0 | Swivel, 3/4" SAE Fem, Push-On | 3 |
| 23 | 8.750-743.0 | Bulkhead, 1/2" Polypro | 3 |
| 24 | 9.802-514.0 | Strain Relief, Lt, Str, 1/2 NPT, .23-.45D | 1 |
| 25 | 8.749-147.0 | Switch, Float, NC, 5A/250 Vac | 1 |
| 26 | 9.802-131.0 | Elbow, 1/2" JIC x 1/2" MPT, 90° | 2 |
| 27 | 9.802-151.0 | Swivel, 1/2" Barb x 1/2" JIC, Fem/Brass | 4 |
| 28 | 9.802-259.0 | Hose, 1/2" Push-On, | 63 in. |
| 29 | 9.802-052.0 | Bulkhead, 3/4" Polypro | 1 |
| 30 | 9.802-261.0 | Hose, 3/4" Push-On | 10 ft. |
| 31 | 8.706-899.0 | Nipple, 3/4" JIC x 3/4" Pipe | 1 |
| 32 | 9.802-423.0 | Cord, Service, 16-3 | 15 ft. |
| 33 | 9.802-448.0 | Conduit, Water Tight, Flex | 8 ft. |
| 34 | 9.803-538.0 | Wire, MTW, 12 Ga, Red | 13 ft. |
| 35 | 9.802-259. | Hose, 1/2" Push-On | 53 in. |

POWER PLATFORM, EXPLODED VIEW

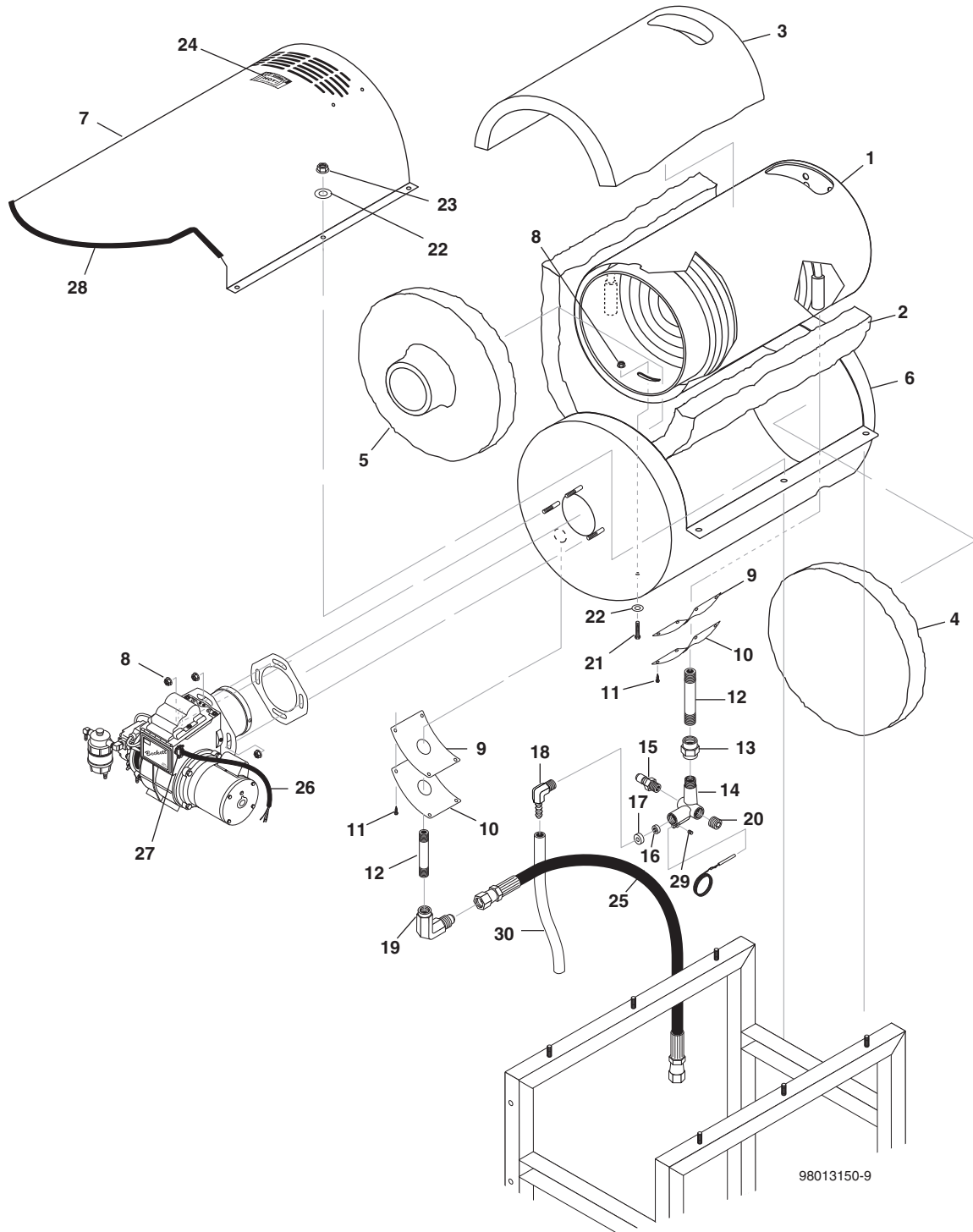


98013150-7

POWER PLATFORM EXPLODED VIEW PARTS LIST

| ITEM | PART NO. | DESCRIPTION | QTY | ITEM | PART NO. | DESCRIPTION | QTY |
|------|-------------|--|-----|------|-------------|--|--------|
| 1 | 8.750-496.0 | Engine, Honda, GX660RTXA2 24HP E/S | 1 | 33 | 9.802-151.0 | Swivel, 1/2" Barb x JIC, Female Brass | 2 |
| 2 | 8.751-069.0 | Generator, 4KW | 1 | 34 | 9.802-259.0 | Hose 1/2" Push-On FT | 2 ft. |
| 3 | 8.919-259.0 | Assembly, Pump, ECOS 7000 | 1 | 35 | 9.802-126.0 | Plug, 1/2" JIC Flare, 636F-8 | 1 |
| 4 | 8.919-294.0 | Assembly, Unloader, ECOS 7001 | 1 | 36 | 9.800-006.0 | Label, Hot/Caliente w/Arrows | 2 |
| 5 | 8.919-182.0 | WLMT, Power Platform Frame | 1 | 37 | 8.900-282.0 | Label, RPM Factory Set | 1 |
| 6 | 8.919-179.0 | WLMT, 4KW Generator, Mount | 1 | 38 | 9.802-203.0 | Clamp, 12" Ro-Clip | 2 |
| 7 | 8.919-176.0 | WLMT, 4KW Generator, Side Rail | 1 | 39 | 9.802-771.0 | Screw, 10/32 x 3/4" | 2 |
| 8 | 8.917-389.0 | Rail, Pump | 1 | 40 | 9.802-695.0 | Nut, 10/32 Kep | 2 |
| 9 | 9.802-392.0 | Pulley, 3TB34 | 1 | 41 | 8.918-432.0 | Hose, 3/8" x 22", 2 Wire, Pressure Lo | 1 |
| 10 | 9.802-405.0 | Bushing, P2 x 1-1/18" | 1 | 42 | 9.802-065.0 | Grommet, 1-5/16" Rubber, Drum Cleaner, MB2 | 1 |
| 11 | 9.802-378.0 | Pulley, BK 34 H | 1 | 43 | 8.719-047.0 | Washer, Nylon, .281 ID x 1 x OD .25 Thick | 4 |
| 12 | 8.715-633.0 | Bushing, H x 7/8" | 1 | 44 | 8.932-965.0 | Label, Warning, Exposed Pullys | 2 |
| 13 | 8.715-593.0 | Pulley, 2BK 90 H | 1 | 45 | 8.919-314.0 | Guard, Belt, Gen Top, ECOS | 1 |
| 14 | 9.802-403.0 | Bushing, H x 25mm | 1 | 46 | 8.919-303.0 | Wlmt, Belt Guard Gen, ECOS | 1 |
| 15 | 8.715-697.0 | Belt, BX 36 | 1 | 47 | 8.919-305.0 | Guard, Belt, Center, ECOS | 1 |
| 16 | 9.802-420.0 | Belt, BX 43 | 2 | 48 | 8.919-302.0 | Wlmt, Belt Guard Pump, ECOS | 1 |
| 17 | 8.919-311.0 | Manifold, 24HP Honda Exhaust, ECOS | 1 | 49 | 9.802-754.0 | Screw, 1/4" x 1/2" NC, Whiz Loc Flange | 12 |
| 18 | 9.802-735.0 | Bolt, 3/8" x 5-1/2", NC HH Tap | 2 | 50 | 8.718-781.0 | ▲ Screw, M5 x 8 x 40mm, Philips Pan HD Zinc | 1 |
| 19 | 9.802-814.0 | Washer, 3/8" Split Ring Lock, Zinc | 6 | 51 | 9.802-039.0 | Elbow, 1/2" JIC x 3/8" MPT | 1 |
| 20 | 9.802-807.0 | Washer, 3/8" SAE, Flat Zinc | 25 | 52 | 8.917-015.0 | Label, Regulation 4442.6 | 1 |
| 21 | 8.751-054.0 | Bolt, Hex, Zinc, 3/8"-16 x 12" ASTM A307A | 2 | 53 | 9.802-959.0 | Key, 0.247 SQR x 2.125" | 1 |
| 22 | 8.725-549.0 | Bolt, 3/8" x 7-1/2" HH | 2 | 54 | 8.751-241.0 | Bolt, SQR Head, 3/8-16 x 1" | 1 |
| 23 | 9.802-728.0 | Bolt, 3/8-16 x 2", HH | 6 | 55 | 8.716-011.0 | ▲ Conduit, Flexo, 1/2 Blk | 13 ft. |
| 24 | 9.802-779.0 | Nut, 3/8", ESNA, NC | 13 | 56 | 9.803-836.0 | ▲ Wire, THWN, 6 Ga. Red | 6 ft. |
| 25 | 9.802-720.0 | Bolt, 3/8" x 1", ESNA, NC | 4 | 57 | 9.803-837.0 | ▲ Wire, THWN, 6 Ga. Black | 6 ft. |
| 26 | 9.802-776.0 | Nut, 5/16", ESNA, NC | 4 | 58 | 9.803-838.0 | ▲ Connector, Battery Post | 2 |
| 27 | 8.718-980.0 | Washer, 5/16" Flat, SAE | 4 | 59 | 8.716-370.0 | ▲ Terminal, Ring Tongue | 3 |
| 28 | 9.802-752.0 | Screw, 1/4" x 1-1/4", Whiz Loc Flange | 2 | 60 | 8.716-371.0 | ▲ Terminal, Ring Tongue | 1 |
| 29 | 9.802-802.0 | Washer, 1/4" x Flat SAE Zinc | 2 | 61 | 9.803-838.0 | ▲ Battery Post | 2 |
| 30 | 9.802-773.0 | Nut, 1/4-20 ESNA NC | 2 | | | ▲ Not Shown | |
| 31 | 9.802-722.0 | Bolt, 3/8" x 1-1/4" NC HH | 2 | | | | |
| 32 | 8.750-737.0 | Adapter, Honda M20-1.50 x 3/8" FPT | 1 | | | | |

COIL EXPLODED VIEW

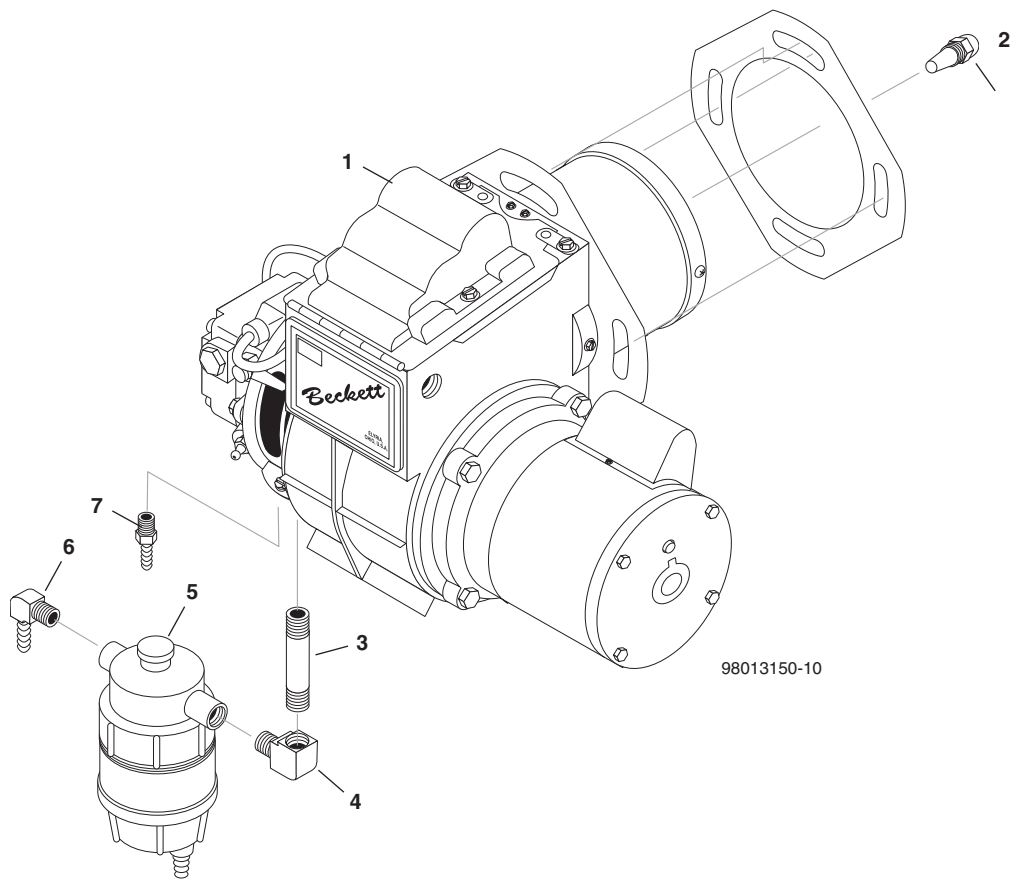


98013150-9

COIL EXPLODED VIEW PARTS LIST

| ITEM | PART NO. | DESCRIPTION | QTY | ITEM | PART NO. | DESCRIPTION | QTY |
|------|-------------|--|-----|------|-------------|--|---------|
| 1 | 8.912-239.0 | Coil, Landa, Dura, SCH 80 w/Aluminized Steel Wrap | 1 | 15 | 9.802-171.0 | Nipple, 1/2" JIC x 3/8" NPT, Steel | 1 |
| 2 | 9.802-896.0 | Insul/Blanket-No Foil, 28" x 57" | 1 | 16 | 8.725-944.0 | Rupture Disk, 8000 PSI, Red | 1 |
| 3 | 9.802-902.0 | Insul/Blanket, Die Cut 28" x 24" x 1" Thick | 1 | 17 | 9.184-030.0 | Spacer, Rupture Disk | 1 |
| 4 | 9.802-883.0 | Insul, Front Head, No Hole | 1 | 18 | 9.707-023.0 | Elbow, 3/8" MPT x 3/8" Push-On, 90° | 1 |
| 5 | 9.802-894.0 | Insul, Burner Head, w/Hole | 1 | 19 | 9.802-043.0 | Elbow, 1/2 JIC x 1/2" Fem 90° | 1 |
| 6 | 8.916-486.0 | Bottom Wrap, Wlmt, Wrinkle Black | 1 | 20 | 8.706-248.0 | Plug, 3/8" Allen Countersunk | 1 |
| 7 | 8.912-192.0 | Wrap, Top, Stainless Steel | 1 | 21 | 9.802-727.0 | Bolt, 3/8" x 1-3/4", Tap | 2 |
| 8 | 9.802-781.0 | Nut, 3/8" NC, Whiz Loc Flange | 5 | 22 | 9.802-807.0 | Washer, 3/8", SAE, Flat Zinc | 8 |
| 9 | 8.933-009.0 | Gasket, Burner Plate | 2 | 23 | 9.802-779.0 | Nut, 3/8", ESNA, NC | 6 |
| 10 | 9.803-132.0 | Retainer Plate, Insul, PHW/VNG | 2 | 24 | 9.800-006.0 | Lable, Hot/Caliente w/Arrows | 1 |
| 11 | 9.802-798.0 | Screw, #10 x 1/2" Hex Head Tek | 8 | 25 | 8.918-423.0 | Hose, 3/8" x 22", 2 Wire, Pressure Low | 1 |
| 12 | 9.802-015.0 | Nipple, 1/2" x 4" Zinc SCH 80 MPT | 2 | 26 | 9.802-448.0 | Conduit, Water Tight, Flex, 1/2" 100'/Box | 5 |
| 13 | 8.706-141.0 | Coupling, 1/2" Steel Pipe | 1 | 27 | 8.716-547.0 | Connector, 1/2" L/T, Straight, Black | 1 |
| 14 | 9.149-003.0 | Manifold Coil Outlet Discharge | 1 | 28 | 9.802-071.0 | Trim, 750 B2 x 1/16" Black | 2.75 ft |
| | | | | 29 | 9.196-012.0 | Screw, 10-24 x 1/4" Hex Set | 1 |
| | | | | 30 | 8.711-785.0 | Hose, 3/8" Push-on | 2.5 ft. |

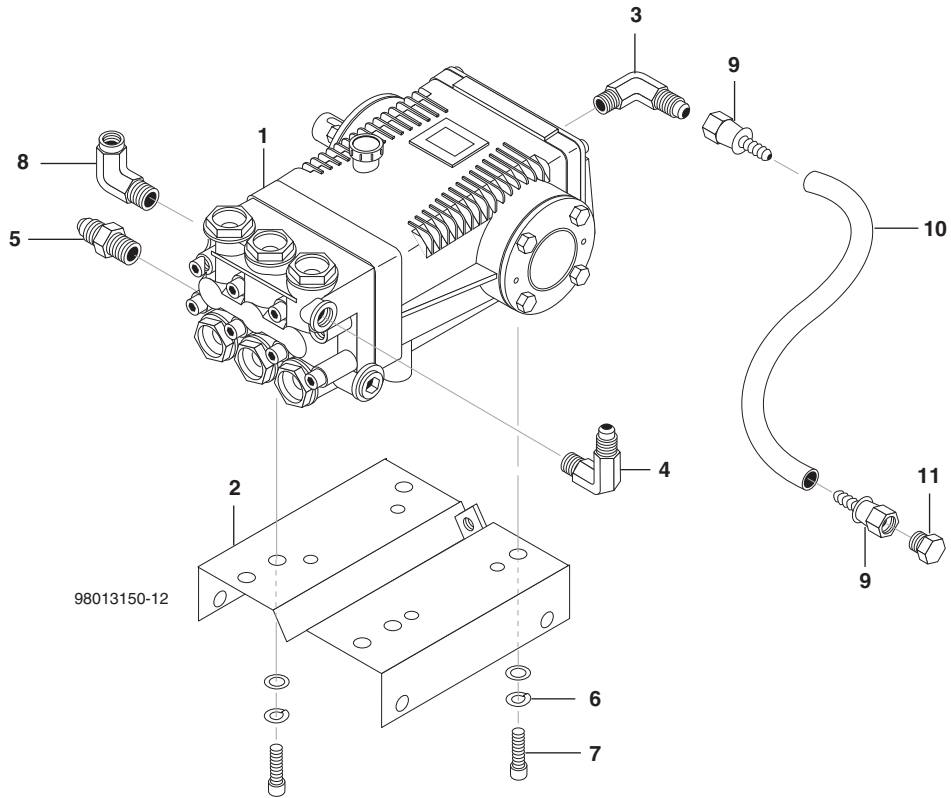
BURNER EXPLODED VIEW



BURNER EXPLODED VIEW PARTS LIST

| ITEM | PART NO. | DESCRIPTION | QTY | ITEM | PART NO. | DESCRIPTION | QTY |
|------|-------------|--|-----|------|-------------|---|-----|
| 1 | 9.802-556.0 | Burner, Beckett SM, 115V Cap MTR, 115VSOL | 1 | 5 | 8.709-158.0 | Filter, Landa, Fuel Oil/H ₂ O Separator | 1 |
| 2 | 9.802-577.0 | Fuel Nozzle, 2.50 x 90 B | 1 | 6 | 8.706-958.0 | Hose Barb, 1/4" MPT, 90° | 1 |
| 3 | 9.803-264.0 | Nipple, 1/4" x 3" Black Pipe | 1 | 7 | 8.706.941.0 | Hose Barb, 1/4" MPT, Brass | 1 |
| 4 | 8.706-161.0 | Elbow, 1/4" Street 90° Galv | 7 | | | | |

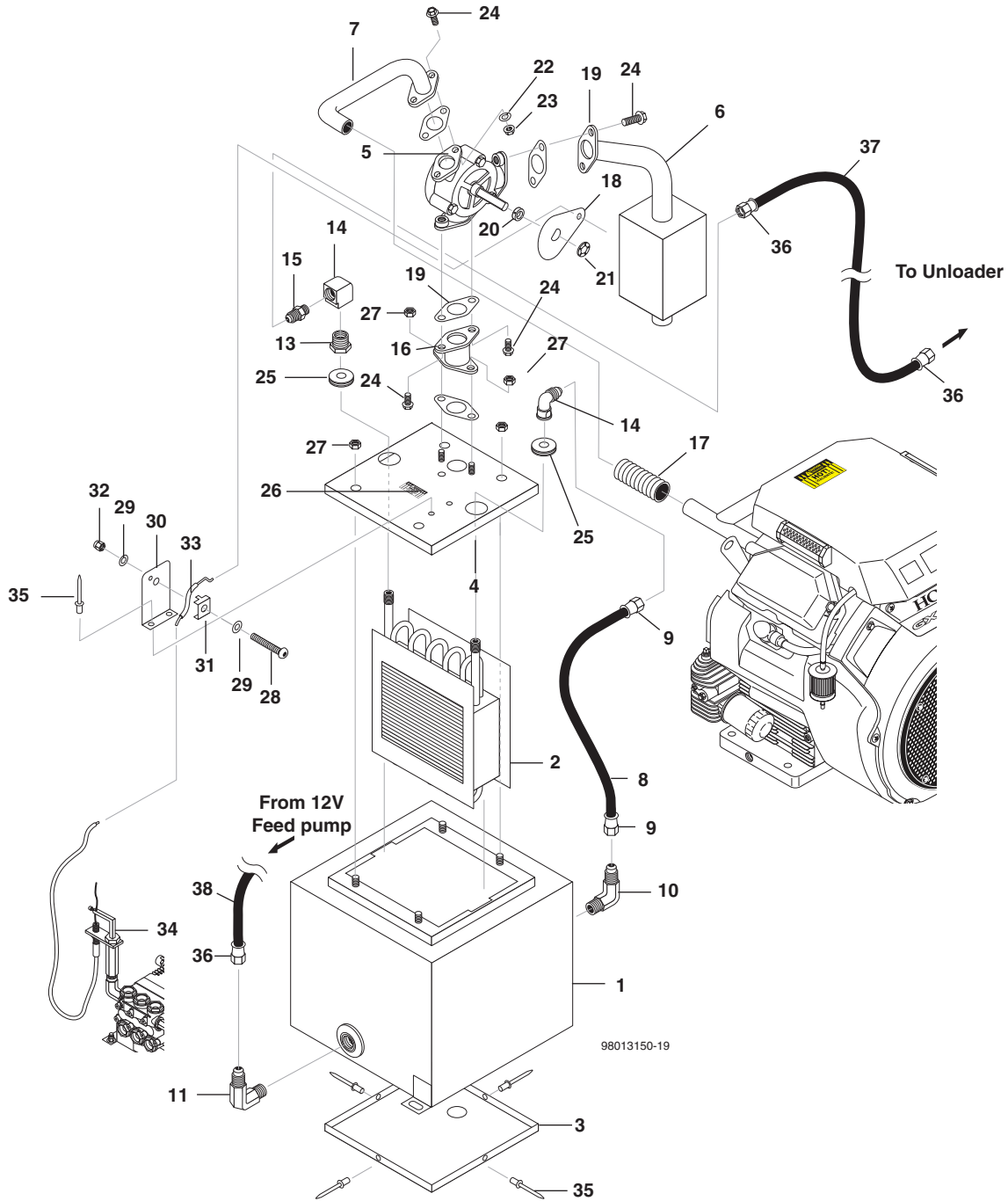
PUMP ASSEMBLY EXPLODED VIEW



PUMP ASSEMBLY EXPLODED VIEW PARTS LIST

| ITEM | PART NO. | DESCRIPTION | QTY | ITEM | PART NO. | DESCRIPTION | QTY |
|------|-------------|--|-----|------|-------------|---|---------|
| 1 | 8.904-883.0 | Pump, Landa LT6035L.1, 6@3500,1540 RPM | 1 | 7 | 9.802-744.0 | Bolt, 10mm x 20mm HH Zinc | 4 |
| 2 | 8.917-387.0 | Mount, Pump Rail W/mt | 1 | 8 | 8.706-207.0 | Elbow, 3/8", Street 90°, Steel | 1 |
| 3 | 9.802-129.0 | Elbow, 1/2" JIC x 3/8", 90° | 1 | 9 | 8.802-151.0 | Swivel, 1/2" Barb x 1/2" JIC, Fem, Brass | 1 |
| 4 | 9.802-039.0 | Elbow, 1/2" JIC x 3/8" MPT | 1 | 10 | 9.802-259.0 | Hose, 1/2" Push-On, /FT | 1.5 ft. |
| 5 | 8.706-902.0 | Nipple, 3/4" JIC x 1/2" Pipe | 1 | 11 | 9.802-126.0 | Plug, 1/2" JIC Flare, 639F-8 | 1 |
| 6 | 8.718-961.0 | Washer, M10 Split Ring LCK8.8CLSS Zinc Pltd | 4 | 12 | 9.802-807.0 | Washer, 3/8" Flat | 4 |

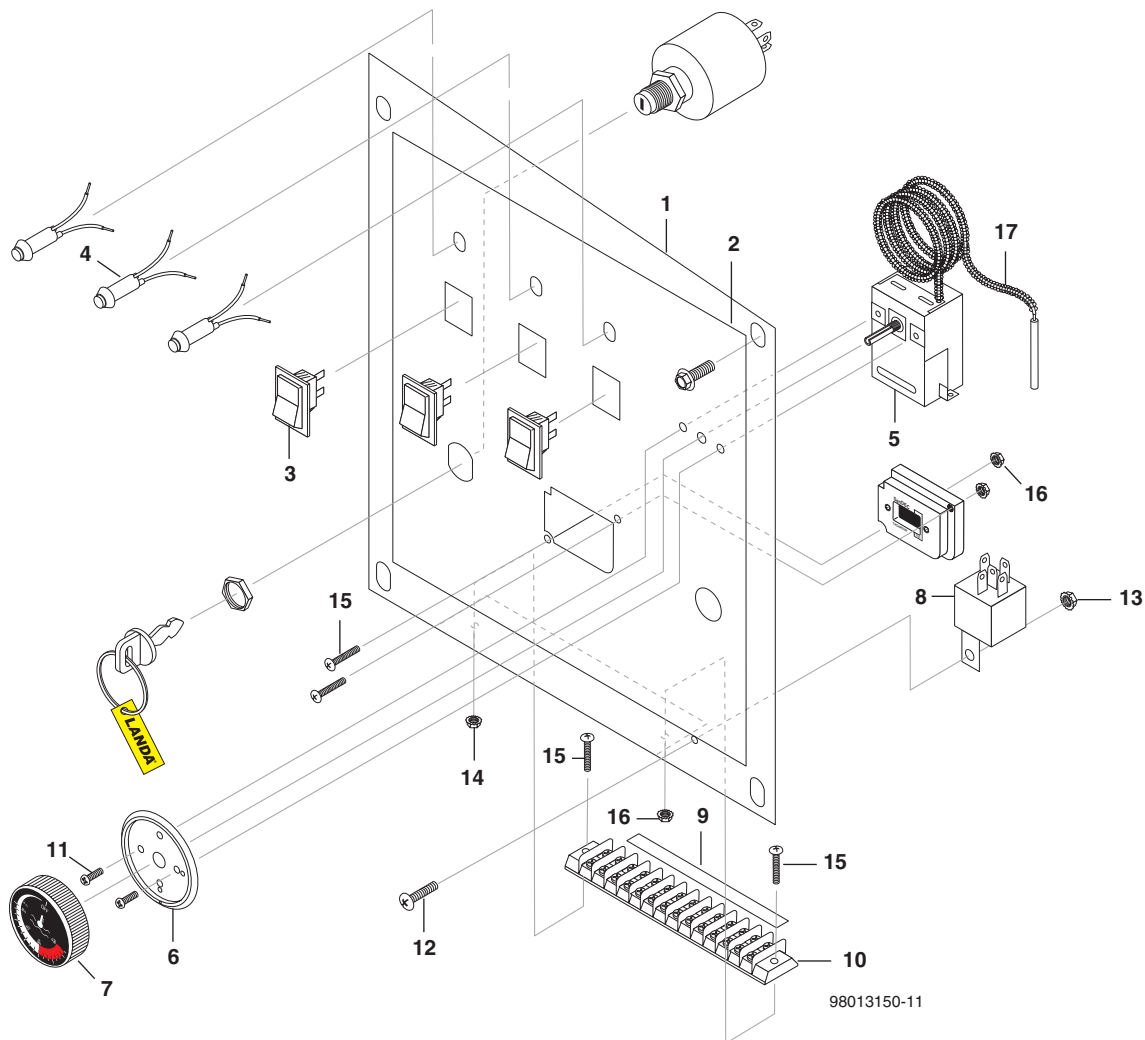
HEAT EXCHANGER EXPLODED VIEW



HEAT EXCHANGER EXPLODED VIEW PARTS LIST

| ITEM | PART NO. | DESCRIPTION | QTY |
|------|-------------|---|----------|
| 1 | 8.919-457.0 | Wlmet, Heat Exchanger | 1 |
| 2 | 8.618-082.0 | Exchnger, Core, Pin, SS 7.5 x 6.25 | 1 |
| 3 | 8.919-220.0 | Cap, Bottom, Heat Exchanger | 1 |
| 4 | 8.919-505.0 | Cap, Top Wlmet, Heat Exch | 1 |
| 5 | 8.617-420.0 | Assy, Exh Dvrtr Vlv, Lgnd | 1 |
| 6 | 8.919-719.0 | Wilmet, Heat Exch Silencer | 1 |
| 7 | 8.751-346.0 | Pipe, Connector, Diverter Valve W/Flange | 1 |
| 8 | 9.802-259.0 | Hose, 1/2" Push-On, /Ft | 14 in. |
| 9 | 9.802-151.0 | Swivel, 1/2" Barb x 1/2" JIC, Fem/Brass | 2 |
| 10 | 9.802-040.0 | Elbow, 1/2 JIC, 1/2, 90° | 1 |
| 11 | 9.802-132.0 | Elbow, 3/4" JIC x 1/2" MPT, 90° | 1 |
| 12 | 8.706-904.0 | Elbow, 1/2" JIC x 3/8" Fem, 90° | 1 |
| 13 | 8.706-917.0 | Bushing, 1/2" x 3/8" Brass | 1 |
| 14 | 8.706-820.0 | Elbow, 1/2" Female, Brass | 1 |
| 15 | 8.706-902.0 | Nipple, 3/4" JIC x 1/2" Pipe | 1 |
| 16 | 8.919-453.0 | Spacer, Diverter, Heat Exch | 1 |
| 17 | 8.750-691.0 | Flexible SS Hose 1-1/4" | 0.33 ft. |
| 18 | 8.919-455.0 | Wheel, Diverter Cam | 1 |
| 19 | 8.750-575.0 | Exhaust Flange, Gasket | 4 |
| 20 | 8.751-126.0 | Collar, Steel Zinc, 3/8" ID x 3/4" OD x 3/8" W | 1 |
| 21 | 8.751-125.0 | Retainer, Push-On 3/8" Stud, Zinc | 1 |
| 22 | 9.802-813.0 | Washer, 5/16" Split Ring Lock, Zinc | 2 |
| 23 | 9.802-786.0 | Nut, 5/16" , Hex, NC" | 2 |
| 24 | 9.803-551.0 | Screw, 5/16" x 3/4" Whiz Loc Flange | 6 |
| 25 | 8.750-612.0 | Grommet 1-1/4" x 1/2" | 2 |
| 26 | 9.800-006.0 | Label, Hot/Caliente W/Arrows | 1 |
| 27 | 9.802-778.0 | Nut, 5/16" Whiz Loc Flange | 6 |
| 28 | 8.718-812.0 | Screw, 10/32 x 3/4 BH Soc, SS | 1 |
| 29 | 8.718-959.0 | Washer, #10 Flat S/S | 2 |
| 30 | 8.919-454.0 | Bracket, Holder, Cable Clamp | 1 |
| 31 | 8.750-616.0 | Cable Holder (Honda Code 16576-891-000) | 1 |
| 32 | 8.718-860.0 | Nut, 10/32", ESNA, SS | 1 |
| 33 | 9.804-072.0 | Conduit, Wire Cover, 1000/ BX(847750) | 3.5 ft. |
| 34 | 8.751-052.0 | Controller Throttle, Model 8100 | 1 |
| 35 | 8.719-053.0 | Rivet, 1/4 x 3/8 Grip, Blind SS P#585566M | 6 |
| 36 | 9.802-152.0 | Swivel, 3/4" Fem, Push-On | 3 |
| 37 | 9.802-261.0 | Hose, 3/4" Push-On | 28 in. |
| 38 | 9.802-261.0 | Hose, 3/4" Push-On | 18 in. |

CONTROL PANEL ASSEMBLY EXPLODED VIEW

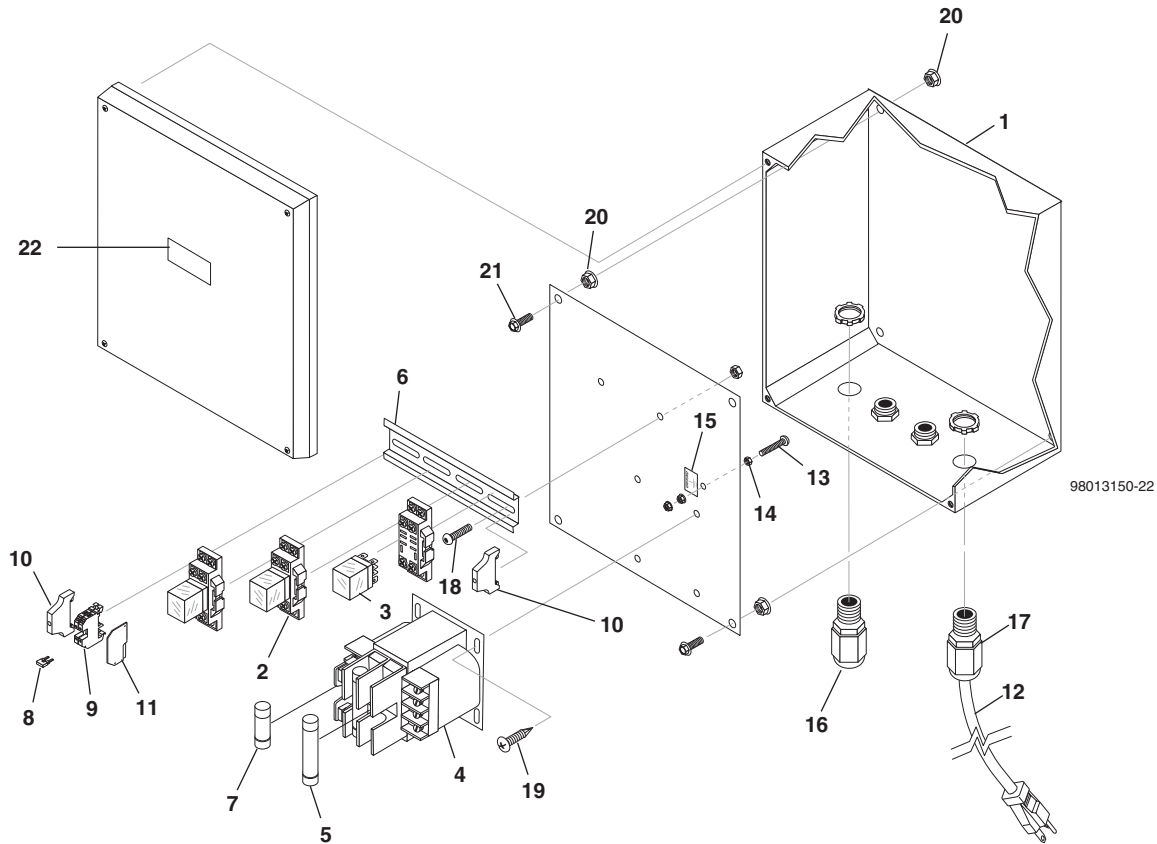


98013150-11

CONTROL PANEL ASSEMBLY EXPLODED VIEW PARTS LIST

| ITEM | PART NO. | DESCRIPTION | QTY | ITEM | PART NO. | DESCRIPTION | QTY |
|------|-------------|---|-----|------|-------------|-------------------------------|-------|
| 1 | 8.919-151.0 | Electric, Control Panel | 1 | 7 | 8.750-097.0 | Knob, Thermostat 120C/248F | 1 |
| 2 | 9.807-356.0 | Label, Control Panel, ECOS 7000 | 1 | 8 | 9.802-470.0 | Relay, 12V | 1 |
| 3 | 8.716-051.0 | Switch, Corvette, RGSCC211RBBA | 3 | 9 | 8.905-701.0 | Label, Marker, Terminal Block | 1 |
| 4 | 8.750-250.0 | Light, Indicator, LED Green 28V | 3 | 10 | 8.716-394.0 | Terminal Block, 14 Pole | 1 |
| 5 | 8.750-095.0 | Thermostat, 120C/240F 2 Meter Capillary | 1 | 11 | 8.718-779.0 | Screw, 4mm x 6mm Pan Head | 2 |
| 6 | 8.712-190.0 | Bezel, Plastic, Thermostat | 1 | 12 | 9.802-749.0 | Screw, 8/32 x 3/4 BH SOC | 1 |
| 7 | 8.750-097.0 | Knob, Thermostat 120C/248F | 1 | 13 | 9.802-785.0 | Nut, 8/32 KEPS | 1 |
| | | | | 14 | 8.718-854.0 | Nut, 6/32" KEPS SS | 4 |
| | | | | 15 | 8.718-733.0 | Screw, 6/32 x 5/8 Rnd, HB | 4 |
| | | | | 16 | 9.802-784.0 | Nut, 6/32 KEPS | 4 |
| | | | | 17 | 9.804-072.0 | Conduit, Wire Cover | 3 Ft. |

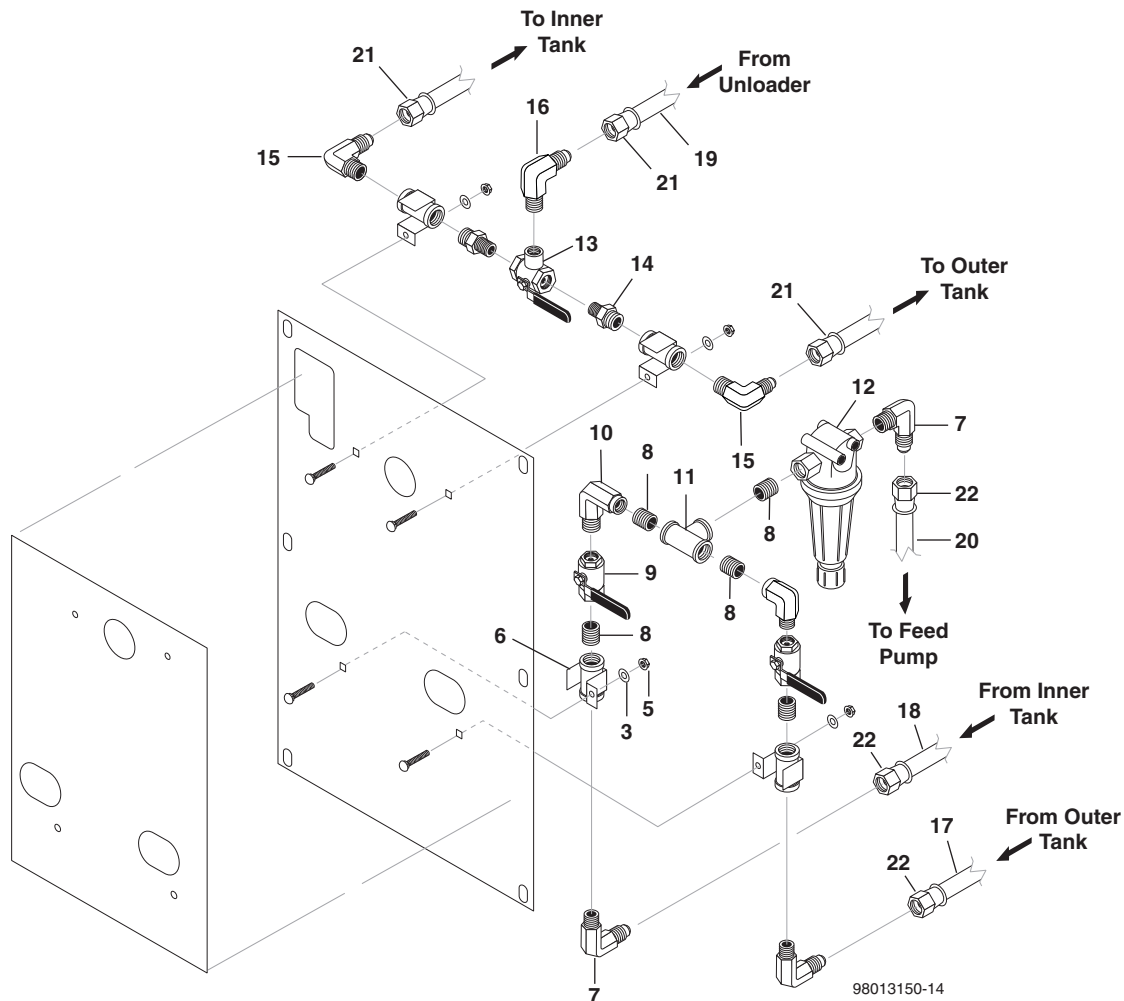
TRANSFORMER BOX ASSEMBLY EXPLODED VIEW



TRANSFORMER BOX EXPLODED VIEW PARTS LIST

| ITEM | PART NO. | DESCRIPTION | QTY | ITEM | PART NO. | DESCRIPTION | QTY |
|------|-------------|--|------|------|-------------|---|-----|
| 1 | 9.802-475.0 | Box, Plastic 8 x 8 x 4 P/N 884PJ-PVC | 1 | 12 | 8.750-648.0 | Power Cord 125, 15 Amps, Straight | 1 |
| 2 | 9.802-467.0 | Base, Relay, SH2B-05, IDEC | 3 | 13 | 9.802-771.0 | Screw, 10/32" x 3/4", BH SOC CS | 1 |
| 3 | 8.716-230.0 | Relay, 24V, Finder | 3 | 14 | 9.802-696.0 | Nut, 10/32" NF ST Kep | 3 |
| 4 | 9.802-553.0 | Transformer, 120/240V, .050KVA | 1 | 15 | 9.800-040.0 | Label, Ground Symbol | 1 |
| 5 | 8.713-080.0 | Fuse, Class R 1Amp | 2 | 16 | 8.716-547.0 | Connector, 1/2" L/T, Straight, Black | 2 |
| 6 | 9.802-457.0 | Din Rail, 35mm | 5.5" | 17 | 9.802-514.0 | Strain Relief, LT, Straight, 1/2 NPT, .23-.45D | 2 |
| 7 | 9.802-463.0 | Fuse, Paper, Buss FNM-1/2, 250V Midget TD | 1 | 18 | 8.718-936.0 | Screw, #8 x 1/2" Phillips, Zink Tek | 8 |
| 8 | 8.749-977.0 | Jumper, Bar, 2-5 GY | 1 | 19 | 9.800-016.0 | Label, Disconnect Power | 1 |
| 9 | 8.749-976.0 | Terminal Block, Feed-Through | 2 | 20 | 9.802-778.0 | Nut, 5/16" Whiz Loc | 8 |
| 10 | 9.804-595.0 | End Bracket | 2 | 21 | 8.718-772.0 | Screw, 5/16" x 1-1/2" Whiz Loc | 4 |
| 11 | 8.749-980.0 | End Cap, Terminal Block | 1 | 22 | 9.800-016.0 | Label, Disconnect Power | 1 |

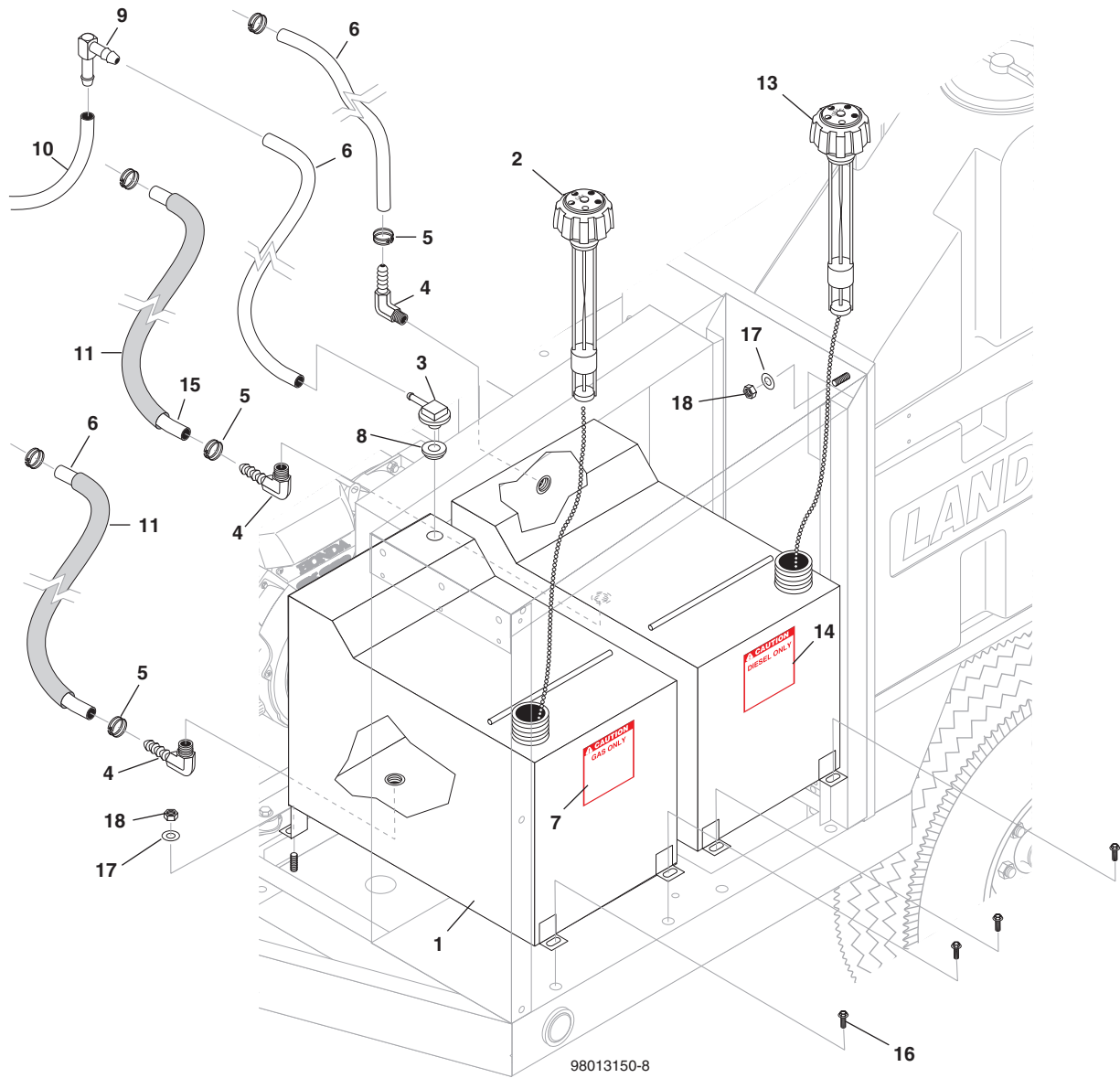
VALVES EXPLODED VIEW



VALVES EXPLODED VIEW PARTS LIST

| ITEM | PART NO. | DESCRIPTION | QTY | ITEM | PART NO. | DESCRIPTION | QTY |
|------|-------------|----------------------------------|-----|------|-------------|---------------------------------|--------|
| 1 | 8.919-152.0 | Panel, Valve Control | 1 | 12 | 8.709-179.0 | Strainer, 3/4" x 20 Mesh | 1 |
| 2 | 9.807-351.0 | Label, Control panel, Lower | 1 | 13 | 8.707-212.0 | Valve, 1/2" Brass 3-Way Ball | 1 |
| 3 | 9.802-802.0 | Washer, 1/4" Flat SAE Zinc | 4 | 14 | 8.706.121.0 | Nipple, 3/4" x 1/2" Steel | 2 |
| 4 | 9.802-705.0 | Bolt, 1/4"-20 x 1" Carriage | 4 | 15 | 8.706-890.0 | Elbow, 1/2" JIC x 3/4" MPT | 2 |
| 5 | 9.802-773.0 | Nut, 1/4"-20 ESNA | 4 | 16 | 9.802-131.0 | Elbow, 1/2" JIC x 1/2" MPT, 90° | 3 |
| 6 | 8.919-188.0 | Wlmt, Coupler, Valve Support | 3 | 17 | 9.802-261.0 | Hose, 3/4" Push-On | 25 in. |
| 7 | 9.803-557.0 | Elbow, 3/4" SAE x 3/4" 90° Brass | 3 | 18 | 9.802-261.0 | Hose, 3/4" Push-On | 15 in. |
| 8 | 8.706-057.0 | Nipple, 3/4" Close, Galv | 5 | 19 | 9.802-259.0 | Hose, 1/2" Push-On | 9 ft. |
| 9 | 8.707-214.0 | Valve, 3/4" 8201 Brass Ball | 2 | 20 | 9.802-261.0 | Hose, 3/4" Push-On | 17 in. |
| 10 | 8.706-181.0 | Elbow, 3/4" Street, Galv | 2 | 21 | 9.802-151.0 | Swivel, 1/2" Barb x 1/2" JIC | 3 |
| 11 | 8.706-846.0 | Tee, 3/4" Female Pipe Brass | 1 | 22 | 9.802-152.0 | Swivel, 3/4", Push-On | 3 |

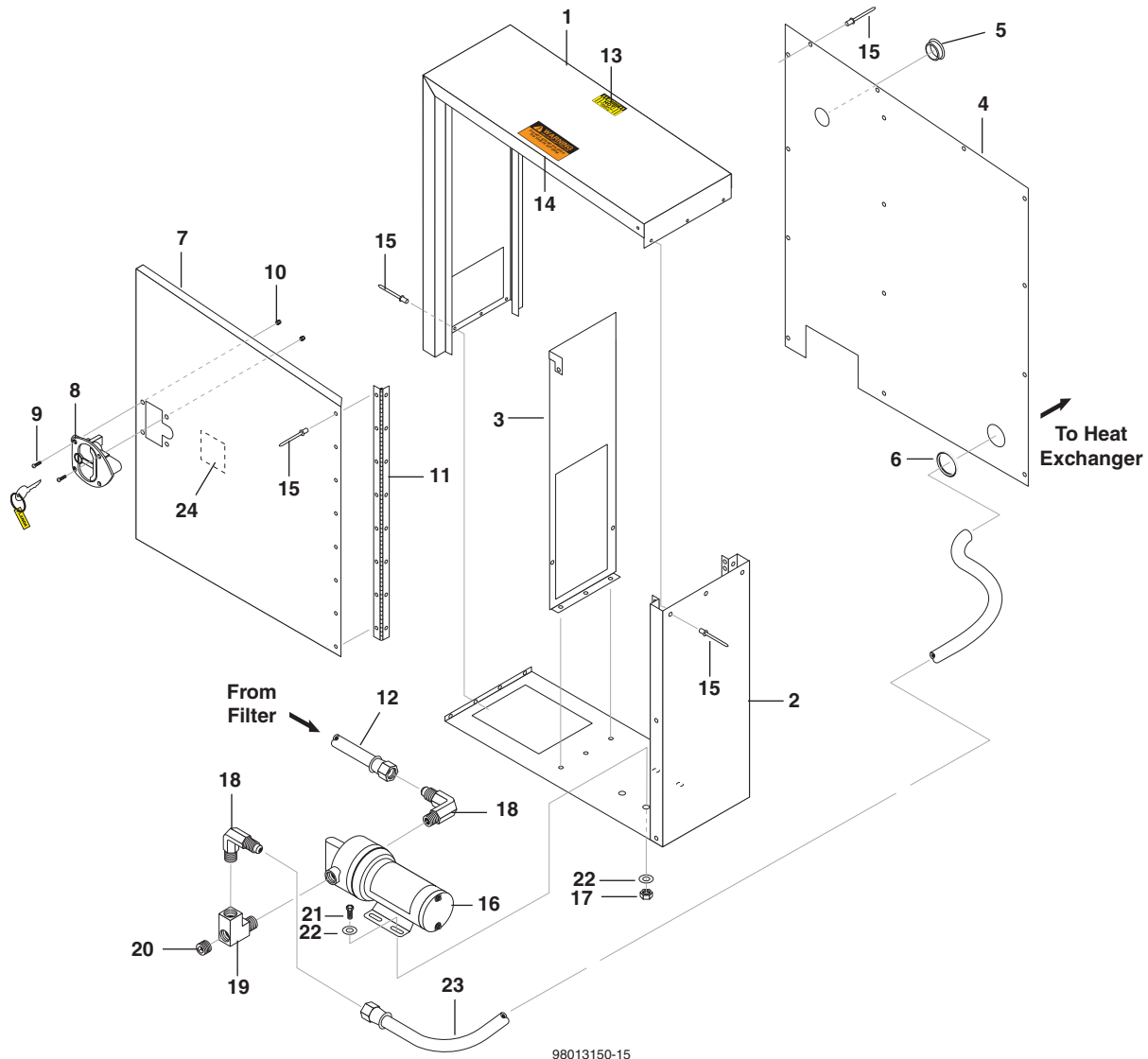
GAS AND DIESEL TANKS EXPLODED VIEW



GAS AND DIESEL EXPLODED VIEW PARTS LIST

| ITEM | PART NO. | DESCRIPTION | QTY | ITEM | PART NO. | DESCRIPTION | QTY |
|------|-------------|---|-------|------|-------------|---|---------|
| 1 | 8.919-492.0 | Weldment, Fuel Tank, Gas, ECOS 7000 | 1 | 11 | 8.716-011.0 | Flexo, 1/2" Blk | 1.6 ft. |
| 2 | 8.751-057.0 | Cap, Ratcheting, Fuel Gauge, & Tether, Carb | 1 | 12 | 8.919-491.0 | Weldment, Fuel Tank, Diesel ECOS 7000 | 1 |
| 3 | 8.751-059.0 | Vapor Vent Carb | 1 | 13 | 8.751-058.0 | Cap, Ratcheting, Diesel Gauge, & Tether | 1 |
| 4 | 8.706-958.0 | Hose Barb, 1/4" 90° | 3 | 14 | 9.800-002.0 | Label, Caution, Diesel Fuel Tank | 1 |
| 5 | 6.390-126.0 | Hose Clamp, .46-54 ST | 6 | 15 | 9.802-254.0 | Hose, 1/4" Fuel Line | 3 ft. |
| 6 | 9.802-254.0 | Hose, 1/4" Fuel Line | 2 ft. | 16 | 9.803-551.0 | Screw, 5/16 x 3/4" Whiz Loc | 4 pcs |
| 7 | 9.800-001.0 | Label, Caution, Gas Fuel Tank | 1 | 17 | 8.718-980.0 | Washer, 5/16" | 4 |
| 8 | 8.751-215.0 | Grommet, Vapor Vent | 1 | 18 | 9.802-776.0 | Nut, 5/16" ESNA | 4 |
| 9 | 8.802-054.0 | Elbow, Fuel Tank, Zinc | 1 | | | | |
| 10 | 8.711-785.0 | Hose, Push On | 3 in. | | | | |

CONTROL BOX EXPLODED VIEW

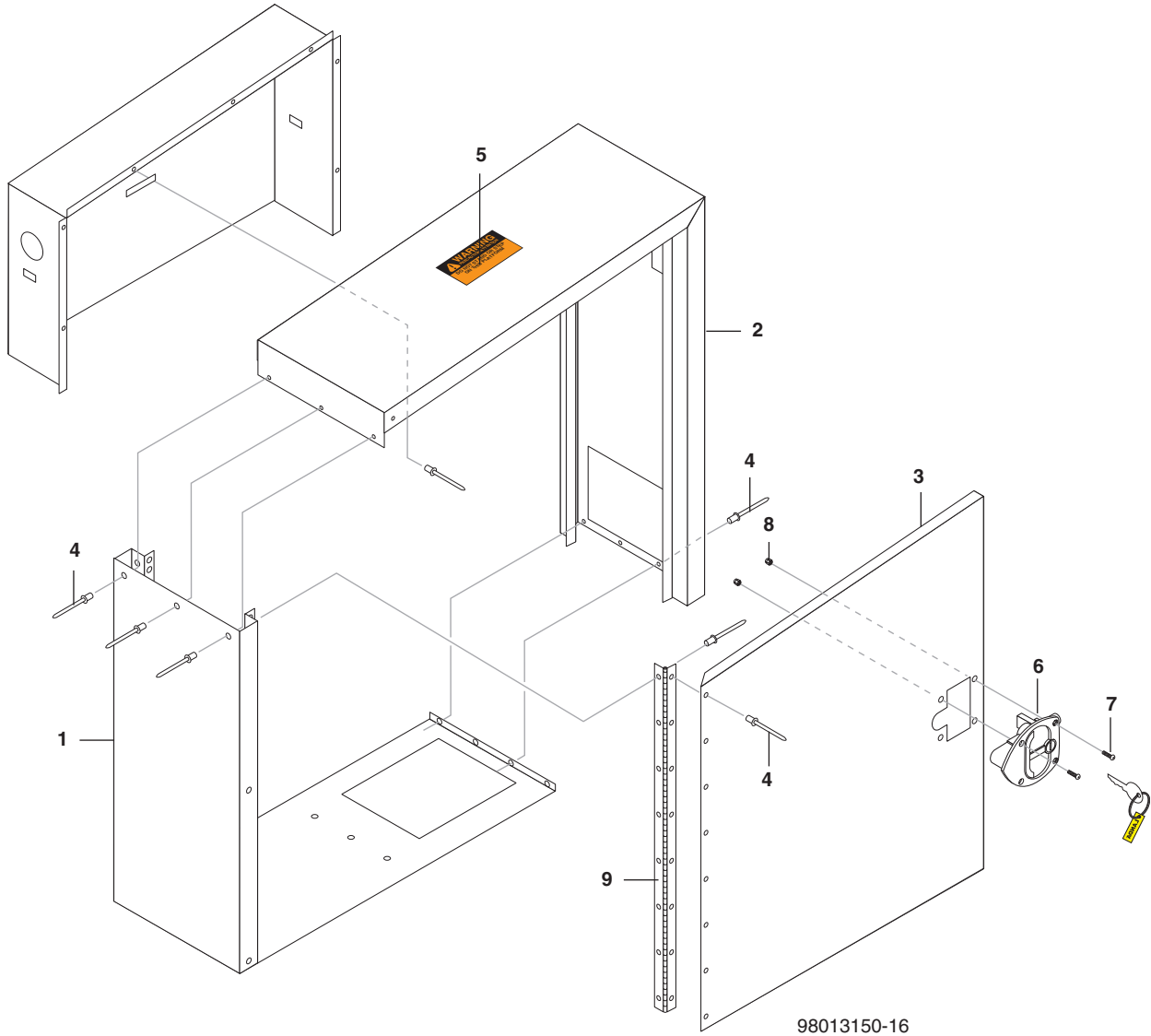


98013150-15

CONTROL BOX EXPLODED VIEW PARTS LIST

| ITEM | PART NO. | DESCRIPTION | QTY | ITEM | PART NO. | DESCRIPTION | QTY |
|------|-------------|--|--------|------|-------------|---|--------|
| 1 | 8.919-143.0 | Wlmt, Control Box, Rear | 1 | 13 | 9.800-006.0 | Label, Hot Caliente w/Arrows | 1 |
| 2 | 8.919-144.0 | Wlmt, Control Box, Front | 1 | 14 | 8.900-522.0 | Label, Warning, Do Not Stand or Step | 1 |
| 3 | 8.919-145.0 | Wlmt, Center Panel Support Control Box | 1 | 15 | 8.751-055.0 | Rivet, Aluminum, 3/16" Dia, 062-.125 Grip | 42 |
| 4 | 8.919-148.0 | Panel, Back, Cntrl Box Cover | 1 | 16 | 8.750-812.0 | Pump, Aquatec 12V, 4.9 GPM, DDP 550 | 1 |
| 5 | 9.802-103.0 | Bushing, Snap, 5/8" | 1 | 17 | 9.802-773.0 | Nut, 1/4-20 ESNA | 4 |
| 6 | 8.706-529.0 | Grommet, 1-3/4" Rubber | 1 | 18 | 9.802-132.0 | Elbow, 3/4" JIC x 1/2" MPT, 90° | 2 |
| 7 | 8.919-150.0 | Door, Control Box, Pass Side | 1 | 19 | 8.706-860.0 | Tee, 1/2" Street, Brass | 1 |
| 8 | 8.751-128.0 | Handle, Locking, Vector, T-Hndl | 1 | 20 | 8.706-250.0 | Plug, 1/2" Allen Countersunk | 1 |
| 9 | 8.718-813.0 | Screw, 10/32 x 1/2 BH, SOC, SS | 4 | 21 | 9.802-703.0 | Bolt, 1/4-20 x 1-1/2" | 4 |
| 10 | 8.718-860.0 | Nut, 10/32" ESNA, SS | 4 | 22 | 9.804-082.0 | Washer, 1/4" Flat | 8 |
| 11 | 8.919-841.0 | Hinge, 2" x 72", Piano, SS | 0.5 | 23 | 9.802-261.0 | Hose, 3/4" Push-On | 16 in. |
| 12 | 9.802-261.0 | Hose, 3/4" Push-On | 14 in. | 24 | 9.800-094.0 | Label, Operating/Warning | 1 |
| 13 | 9.800-006.0 | Label, Hot Caliente w/Arrows | 1 | | | | |

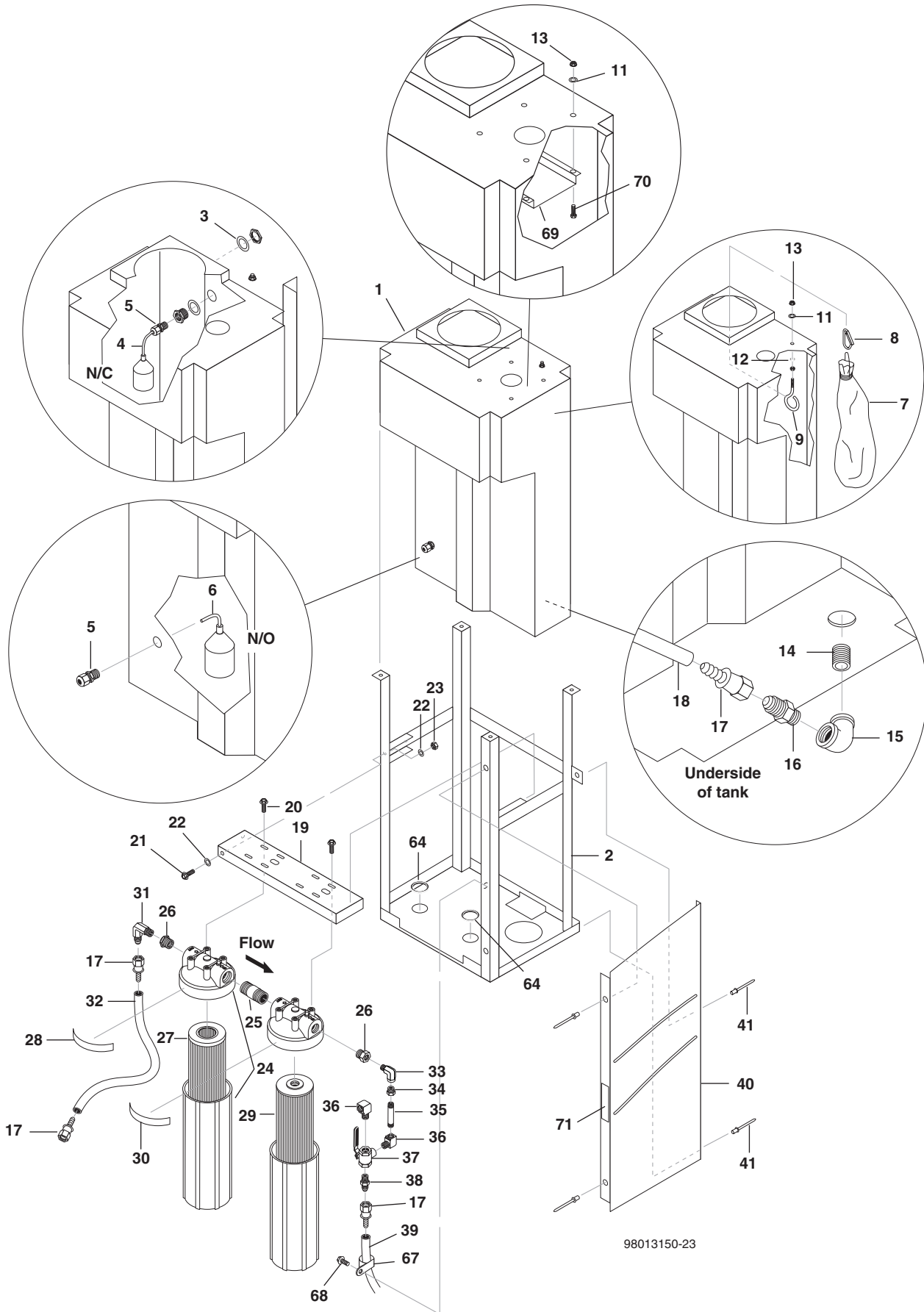
LEFT TANK BOX EXPLODED VIEW



LEFT TANK BOX EXPLODED VIEW PARTS LIST

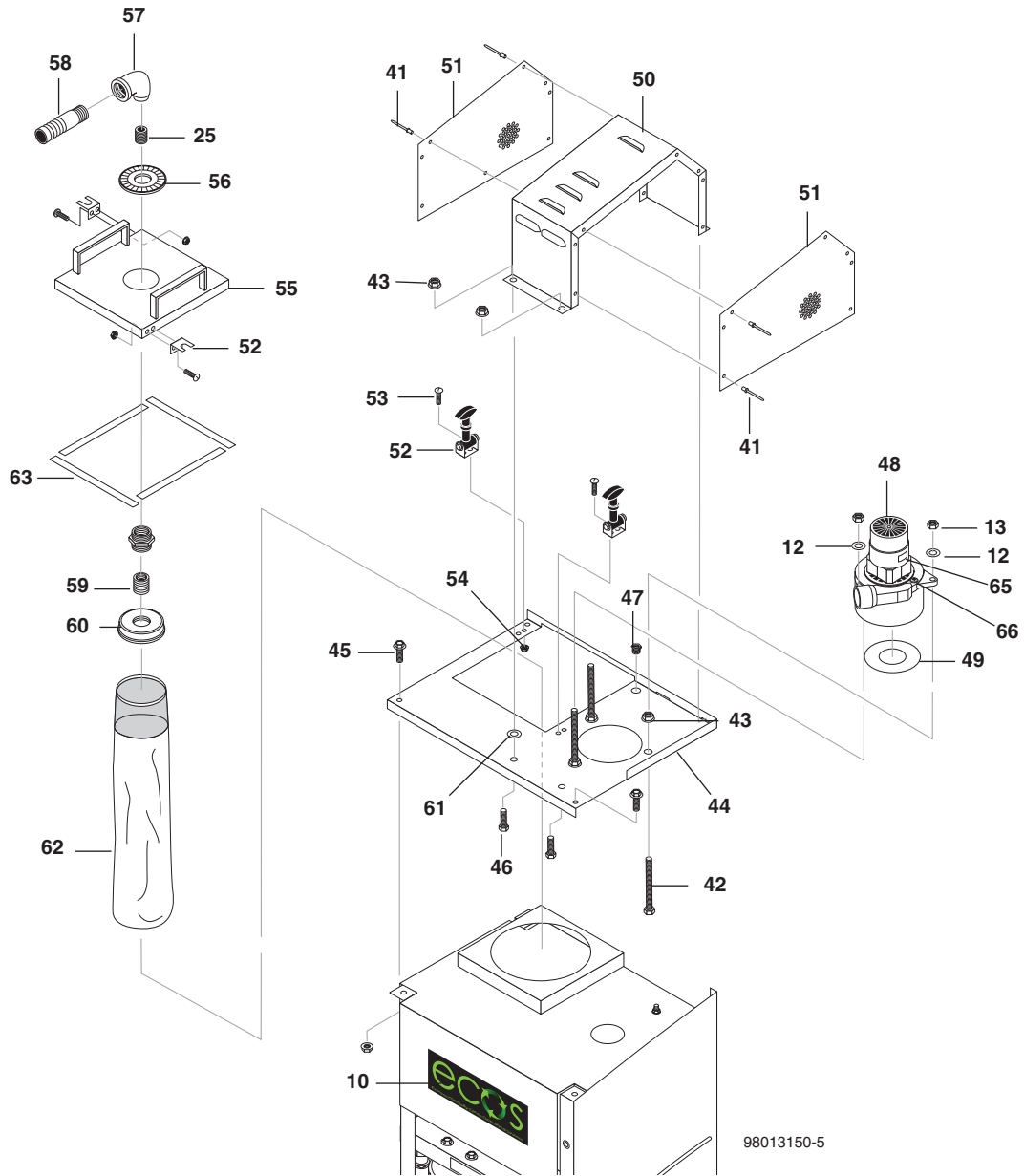
| ITEM | PART NO. | DESCRIPTION | QTY | ITEM | PART NO. | DESCRIPTION | QTY |
|------|-------------|--|-----|------|-------------|----------------------------------|-----|
| 1 | 8.919-144.0 | Wlmt, Control Box, Front | 1 | 6 | 8.751-128.0 | Handle, Locking, Vector T-Hndl | 1 |
| 2 | 8.919-143.0 | Wlmt, Control Box, Rear | 1 | 7 | 8.718-813.0 | Screw, 10/32 x 1/2 BH SOC, SS | 4 |
| 3 | 8.919-149.0 | Door, Control Box, Drvr Side | 1 | 8 | 8.718-860.0 | Nut, 10/32" Esna SS | 4 |
| 4 | 8.751-055.0 | Rivet, Aluminum 3/16" Dia 062-.125 Grip | 25 | 9 | 8.719-104.0 | Hinge, 2 x 72" Piano SS | 0.5 |
| 5 | 8.900-520.0 | Label, Do Not Stand or Step | 1 | | | | |

VACUUM ASSEMBLY EXPLODED VIEW



98013150-23

VACUUM ASSEMBLY EXPLODED VIEW

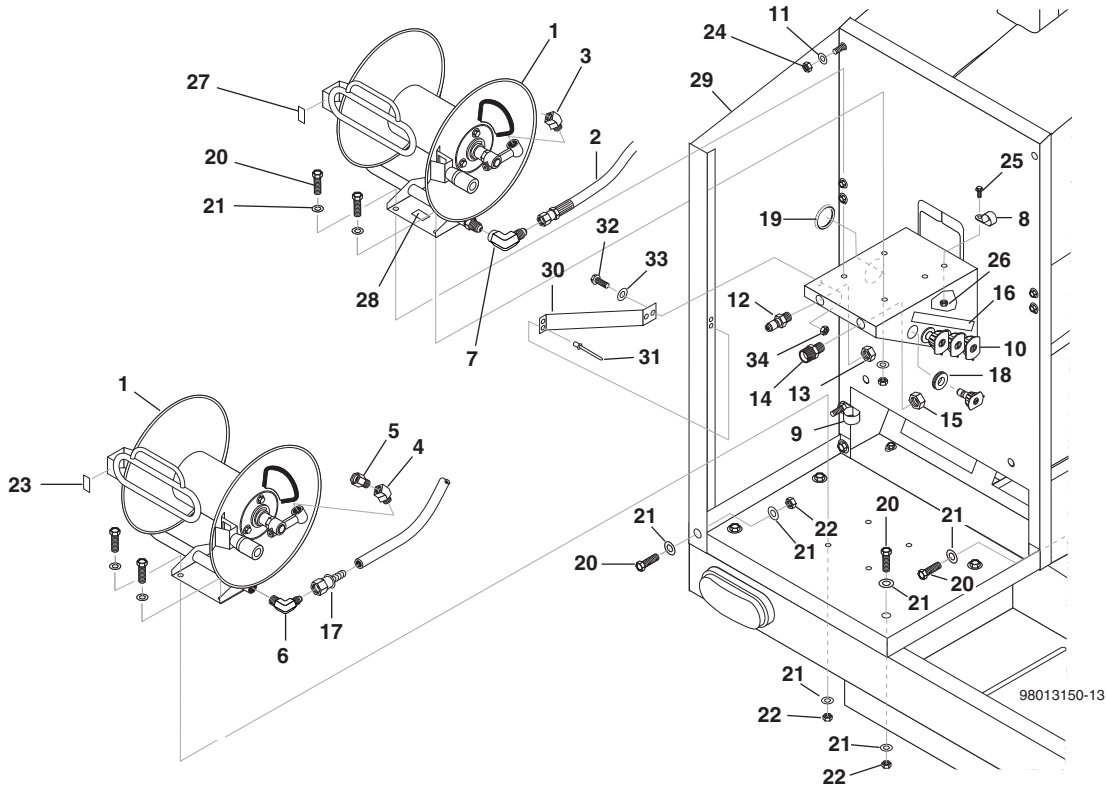


98013150-5

VACUUM ASSEMBLY EXPLODED VIEW PARTS LIST

| ITEM | PART NO. | DESCRIPTION | QTY | ITEM | PART NO. | DESCRIPTION | QTY |
|------|-------------|--|--------|------|-------------|---|--------|
| 1 | 8.750-984.0 | Tank, Vacuum 40 Gal | 1 | 38 | 8.706-902.0 | Nipple, 3/4" JIC x 1/2" Pipe | 1 |
| 2 | 8.919-200.0 | Wlmt, Vacuum Tank Frame | 1 | 39 | 9.802-261.0 | Hose, 3/4" Push-On, /Ft | 48 in. |
| 3 | 8.750-743.0 | Bulkhead, 1/2" Polypro | 1 | 40 | 8.919-204.0 | Cover, Vac Tank, Pass Side | 1 |
| 4 | 8.749-147.0 | Switch, Float, NC, 5A/250 Vac | 1 | 41 | 8.751-055.0 | Rivet, Aluminum 3/16" Dia. 062-.125 Grip | 18 |
| 5 | 9.802-514.0 | Strain Relief, Lt, Str, 1/2 NPT | 2 | 42 | 8.751-242.0 | Bolt, Tap, 1/4" x 4-1/2" A307A, Zn Plt | 3 |
| 6 | 8.723-196.0 | Switch, Float, N/O, w/20' Cord | 1 | 43 | 9.802-775.0 | Nut, 1/4" Flange, Zn | 5 |
| 7 | 8.726-046.0 | Skimmer, Oil Filter 8" x 24" | 1 | 44 | 8.919-209.0 | Cover, Top, Vac Tank | 1 |
| 8 | 8.750-305.0 | Spring Hook | 1 | 45 | 9.802-754.0 | Screw, 1/4-20 X 1/2", Whiz Loc Flange | 4 |
| 9 | 8.718-708.0 | Eyebolt, 1/4-20 x 1", Zinc | 1 | 46 | 8.718-607.0 | Bolt, 1/4-20 X 3/4", Carriage | 2 |
| 10 | 9.807-367.0 | Label, ECOS | 1 | 47 | 9.802-064.0 | Grommet, Rubber, Nozzle Holder | 1 |
| 11 | 8.718-568.0 | Washer, 1/4" Flat Rubber Back, SS | 5 | 48 | 8.625-843.0 | Vac Motor, 120V 5.7 3St TD TB | 1 |
| 12 | 9.804-082.0 | Washer, 1/4" Flat, Zinc | 7 | 49 | 8.750-614.0 | Washer Seal Vaccum Motor | 1 |
| 13 | 9.802-773.0 | Nut, 1/4-20 Esna NC | 8 | 50 | 8.919-310.0 | Cover, Vac Motor, | 1 |
| 14 | 8.705-979.0 | Nipple, 1" Close Galv | 1 | 51 | 8.919-216.0 | Cover, Vacuum Motor, Side | 2 |
| 15 | 8.706-191.0 | Elbow, 1" x 3/4", 90° Galv | 1 | 52 | 8.751-127.0 | Latch, Hood Mini Rubber (35RS ZN) | 2 |
| 16 | 8.706-899.0 | Nipple, 3/4" JIC x 3/4" Pipe | 1 | 53 | 9.802-748.0 | Screw, 6/32" x 3/8", Rnd Hd Mch | 8 |
| 17 | 9.802-152.0 | Swivel, 3/4" SAE Fem, Push-On | 4 | 54 | 9.802-784.0 | Nut, 6-32 Keps | 8 |
| 18 | 9.802-261.0 | Hose, 3/4" Push-On, /Ft | 19 in. | 55 | 8.919-321.0 | Wlmt, Vacuum Lid, Hose Connection | 1 |
| 19 | 8.919-203.0 | Bracket, Filter Mount | 1 | 56 | 8.706-490.0 | Bulkhead, 1-1/2" Polypro | 1 |
| 20 | 9.803-551.0 | Screw, 5/16" x 3/4" Whiz Loc Flange | 8 | 57 | 8.706-375.0 | Elbow, 1-1/2" Ft x Ft, PVC 80, 90° | 1 |
| 21 | 9.802-720.0 | Bolt, 3/8" x 1" | 2 | 58 | 8.750-292.0 | Nipple 1.5" x 2" Barbed | 1 |
| 22 | 9.802-807.0 | Washer, 3/8", SAE, Flat Zinc | 4 | 59 | 8.706-468.0 | Nipple 1.5" x 3" PVC 80 | 1 |
| 23 | 9.802-779.0 | Nut, 3/8", Esna, NC | 2 | 60 | 8.750-290.0 | Filter Bag Holder 2-1/2" | 1 |
| 24 | 8.726-043.0 | Filter Housing | 2 | 61 | 8.718-976.0 | Washer, 1/4" Retainer | 2 |
| 25 | 8.706-424.0 | Nipple, 1.5" Close, PVC 80 | 2 | 62 | 8.726-042.0 | Filter Bag | 1 |
| 26 | 8.751-273.0 | Bushing, 1-1/2" x 3/4", Nylon | 2 | 63 | 9.802-193.0 | Gasket, Neoprene, SC41-w/PSA | 3 ft. |
| 27 | 8.726-044.0 | Polyester Pleated Filter, 20 Micron | 1 | 64 | 8.706-546.0 | Grommet, 1-3/4 x 2-1/8 | 2 |
| 28 | 8.900-452.0 | Label, Cartridge Filter | 1 | 65 | 9.800-040.0 | Label, Ground Symbol | 1 |
| 29 | 8.726-045.0 | Carbon Activated Filter, 5 Micron | 1 | 66 | 8.718-941.0 | Screw, 10-16 x 5/8 Tek | 1 |
| 30 | 8.900-454.0 | Label, Carbasorb Filter | 1 | 67 | 9.802-206.0 | Clamp, Tube, 1.312 Dia | 1 |
| 31 | 9.803-557.0 | Elbow, 3/4" SAE x 3/4", 90°, Brass | 1 | 68 | 9.802-799.0 | Screw, #14 x 1" Tek | 1 |
| 32 | 9.802-261.0 | Hose, 3/4" Push-On, /Ft | 37 in. | 69 | 8.919-831.0 | Cover, Vacuum Deflector | 1 |
| 33 | 8.706-181.0 | Elbow, 3/4" Street 90 150 WP PL | 1 | 70 | 8.718-814.0 | Screw, 10/32 x 1-1/4", SS | 4 |
| 34 | 8.706-295.0 | Bushing, 3/4 x 1/2, Steel | 1 | 71 | 9.807-360.0 | Label, Filtered Water Valve | 1 |
| 35 | 9.802-015.0 | Nipple, 1/2" x 4" Zinc SCH 80 MPT | 1 | | | | |
| 36 | 8.706-179.0 | Elbow, 1/2" Street, Galv | 2 | | | | |
| 37 | 8.707-212.0 | Valve, 1/2" Brass, 3-Way Ball | 1 | | | | |

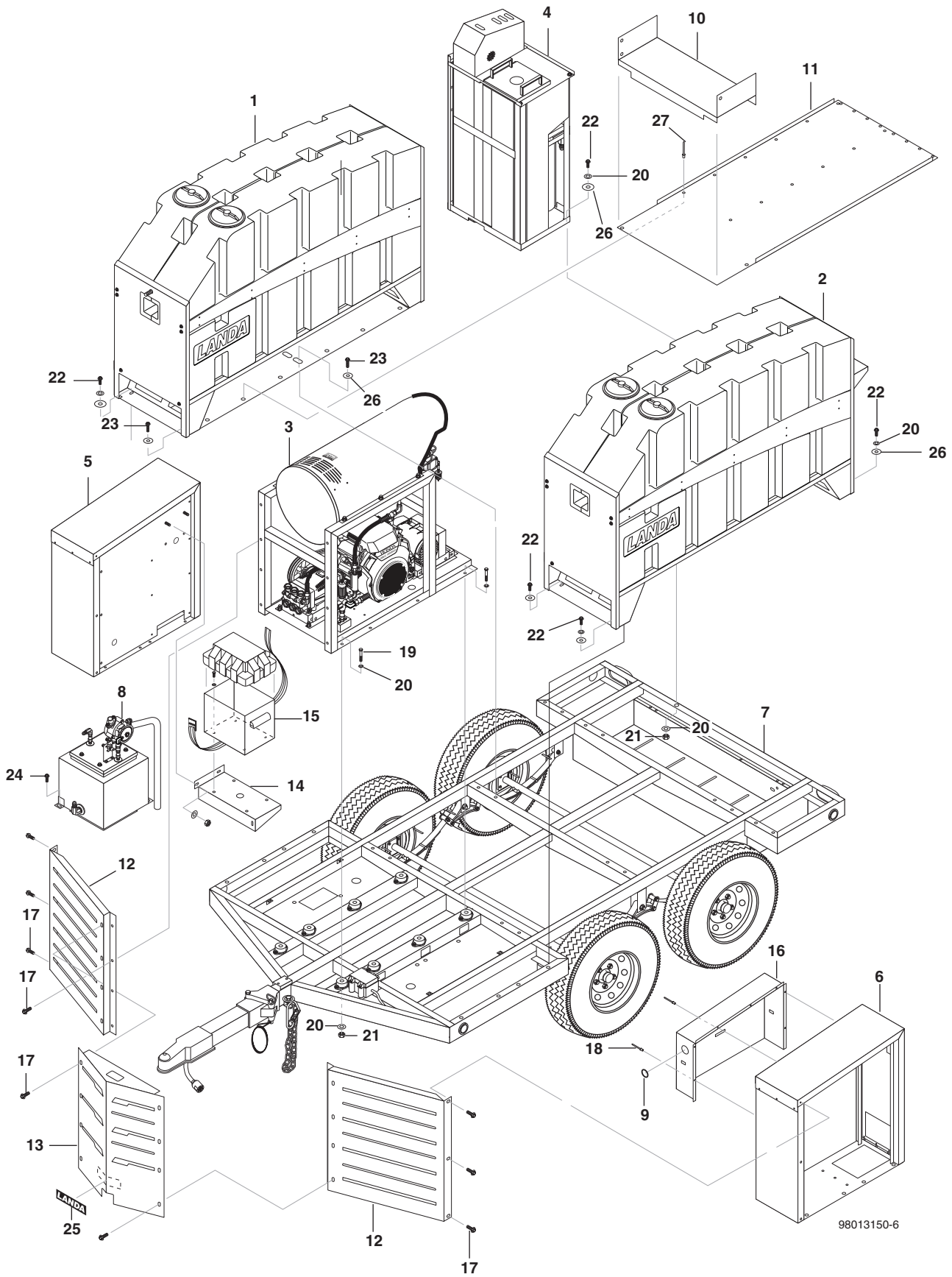
HOSE REEL EXPLODED VIEW



HOSE REEL EXPLODED VIEW PARTS LIST

| ITEM | PART NO. | DESCRIPTION | QTY | ITEM | PART NO. | DESCRIPTION | QTY |
|------|-------------|--|-----|------|-------------|--------------------------------|-----|
| 1 | 9.122-002.0 | Hose Reel, 100 Ft , Fixed Base | 2 | 15 | 8.706-938.0 | Nut, 1/2" Brass, Lock | 1 |
| 2 | 8.918-207.0 | Hose, 3/8" x 150" 2 Wire, Swivel x SWI | 2 | 16 | 8.900-266.0 | Label, Nozzle, 0, 15, 4 | 1 |
| 3 | 9.802-041.0 | Elbow, 3/8" Street 45° Steel | 1 | 17 | 9.802-152.0 | Swivel, 3/4" SAE FEM, Push-On | 2 |
| 4 | 8.706-834.0 | Elbow, 3/8" Street 45° | 1 | 18 | 9.802-064.0 | Grommet, Rubber, Nozzle Holder | 4 |
| 5 | 9.802-147.0 | Swivel, 3/8" x MP 3/4" GHF w/ Strainer | 1 | 19 | 8.706-534.0 | Grommet, 2" Rubber | 1 |
| 6 | 9.802-132.0 | Elbow, 3/4 JIC x 1/2 MPT | 1 | 20 | 9.802-720.0 | Bolt, 3/8" x 1", NC HH | 14 |
| 7 | 8.706-207.0 | Elbow, 3/8" Street | 1 | 21 | 9.802-807.0 | Washer, 3/8", SAE, Flat Zinc | 28 |
| 8 | 9.802-204.0 | Clamp, 3/4" | 1 | 22 | 9.802-779.0 | Nut, 3/8", ESNA, NC | 14 |
| 9 | 9.802-206.0 | Clamp, 1.312" | 1 | 23 | 9.800-020 | Label, Cold Water, Inlet | 1 |
| 10 | 8.712-353.0 | Nozzle, SAQCMEG 0005, Red | 1 | 24 | 9.802-773.0 | Nut, 1/4-20 ESNA, NC | 2 |
| | 8.712-354.0 | Nozzle, SAQCMEG 1505, Yellow | 1 | 25 | 8.718-812.0 | Screw, 10/32 x 3/4 BH, SOC SS | 1 |
| | 8.712-355.0 | Nozzle, SAQCMEG 2502, Green | 1 | 26 | 9.802-696.0 | Nut, 10/32 KEP | 1 |
| | 8.712-356.0 | Nozzle, SAQCMEG 4005, White | 1 | 27 | 9.800-021.0 | Label, Hot Water Outlet | 1 |
| 11 | 9.804-082.0 | Washer, 1/4" Flat, Zinc | 2 | 28 | 9.800-006.0 | Label, Hot | 1 |
| 12 | 9.802-171.0 | Coupler, 3/8" Plug, Male, Steel/Zinc | 1 | 29 | 8.919-315.0 | Cover, Hose Reel Side | 1 |
| 13 | 8.706-834.0 | Locknut, 3/8", Nylon | 1 | 30 | 8.919-793.0 | Bracket, Hose Reel | 1 |
| 14 | 8.706-968.0 | Nipple, 1/2" MPT x 3/4" GHM | 1 | 31 | 8.751-055.0 | Rivet, 3/16" Alum | 2 |
| | | | | 32 | 9.802-710.0 | Screw, 5/16" x 1" | 2 |
| | | | | 33 | 8.718-980.0 | Washer, 5/16" | 2 |
| | | | | 34 | 9.802-778.0 | Nut, 5/16" Whiz | 2 |

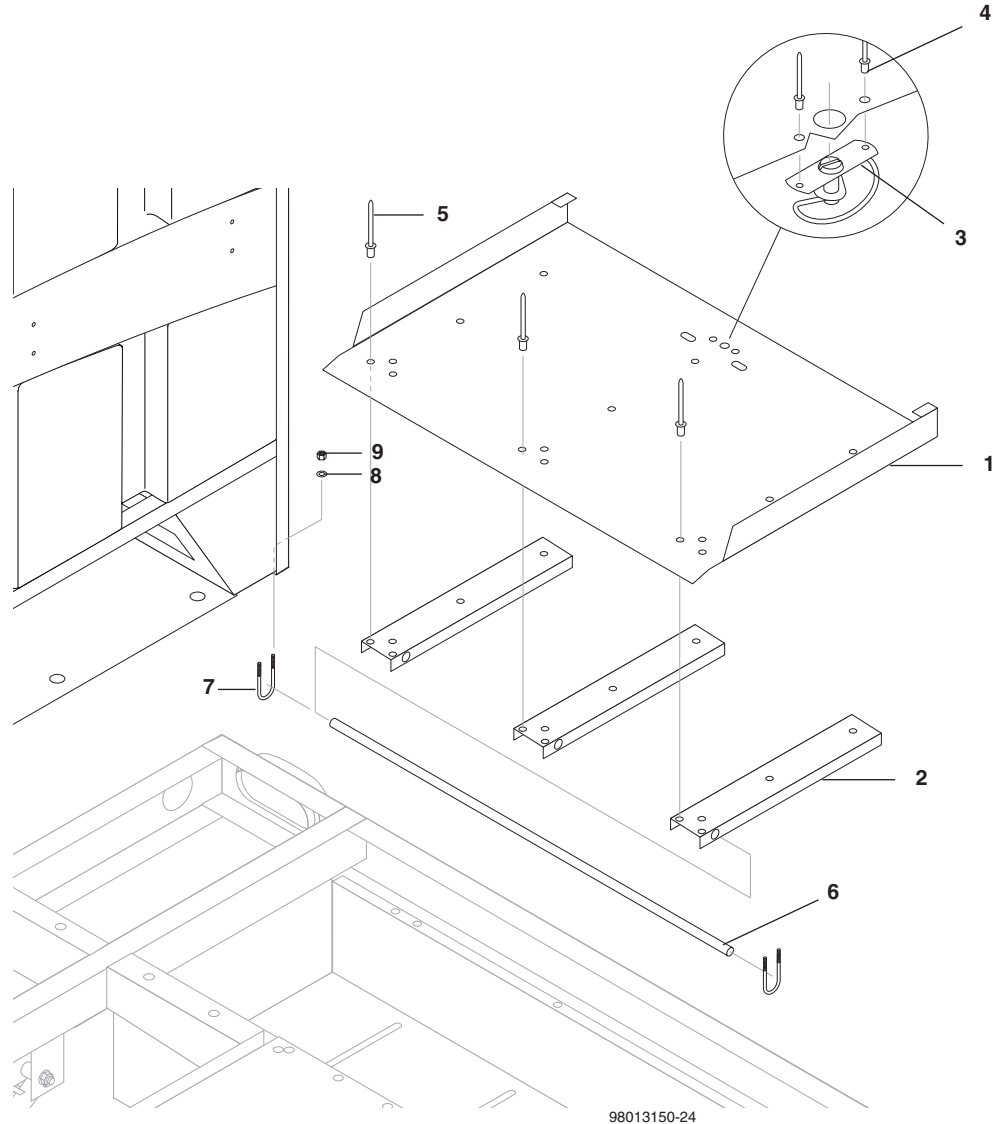
ASSEMBLY EXPLODED VIEW



ASSEMBLY EXPLODED VIEW PARTS LIST

| ITEM | PART NO. | DESCRIPTION | QTY |
|------|-------------|--|-----|
| 1 | | See Right Side Tank Assembly | 1 |
| 2 | | See Left Side Tank Assembly | 1 |
| 3 | | See Power Platform Asssembly | 1 |
| 4 | | See Vacuum Assembly | 1 |
| 5 | | See Right Control Cabinet | 1 |
| 6 | | See Left Side Fuel Cabinet | 1 |
| 7 | | See Chassis Assembly | 1 |
| 8 | | See Heat Exchanger Assembly | 1 |
| 9 | 8.706-529.0 | Grommet, 1-3/4" | 1 |
| 10 | 8.919-217.0 | Cover, Hose Guard | 1 |
| 11 | 8.919-185.0 | Floor, Galley Way, Beaded | 1 |
| 12 | 8.919-146.0 | Wlmt, Front Panel | 2 |
| 13 | 8.919-147.0 | Panel, Front Access, Pump Cover | 1 |
| 14 | 8.919-427.0 | Bracket, Battery Mount, Trailer | 1 |
| 15 | 8.706-600.0 | Battery Box, M-100, Large | 1 |
| 16 | 8.919-493.0 | Panel, Cabinet Back, Fuel Side | 1 |
| 17 | 9.802-754.0 | Screw, 1/4" x 1/2" NC, Whiz Loc Flange | 22 |
| 18 | 8.751-055.0 | Rivet, Aluminum 3/16" Dia 062-.125 Grip | 7 |
| 19 | 9.802-730.0 | Bolt, 3/8" x 2-1/2" NC, HH | 8 |
| 20 | 9.802-807.0 | Washer, 3/8" SAE, Flat Zinc | 34 |
| 21 | 9.802-779.0 | Nut, 3/8" ESNA NC | 11 |
| 22 | 9.802-720.0 | Bolt, 3/8" x 1" NC HH | 9 |
| 23 | 9.802-767.0 | Screw, 3/8" x 3/4" NC, Whiz Loc Flange | 6 |
| 24 | 9.803-551.0 | Screw, 5/16" x 3/4" Whiz Loc Flange | 2 |
| 25 | 8.900-802.0 | Label, Landa Logo, 25.75" x 6" | 1 |
| 26 | 9.802-812.0 | Washer, 3/8" x 1-1/2" Fender | 12 |
| 27 | 8.751-055.0 | Rivet, Alum 3/16" Dia | 28 |

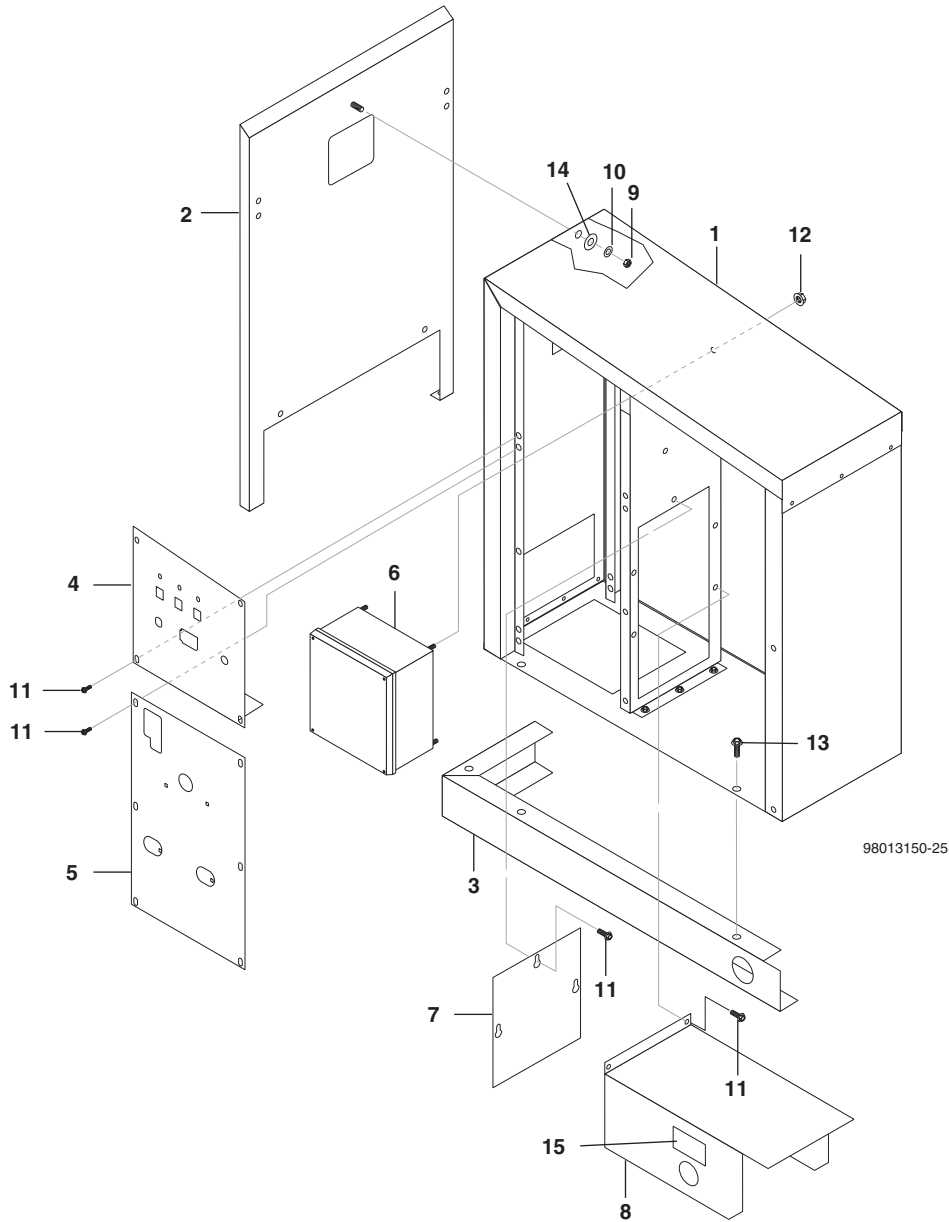
VACUUM HOSE STORAGE COVER ASSEMBLY



VACUUM HOSE STORAGE COVER ASSEMBLY PARTS LIST

| ITEM | PART NO. | DESCRIPTION | QTY | ITEM | PART NO. | DESCRIPTION | QTY |
|------|-------------|---------------------------------------|-----|------|-------------|-----------------------------|-----|
| 1 | 8.919-495.0 | Lid, Vac Cover-Floor | 1 | 6 | 8.911-232.0 | Axle, 33", Long, Rear, SGHW | 1 |
| 2 | 8.919-494.0 | Brace, Vac Storage, Cover | 3 | 7 | 9.804-373.0 | U-Bolt, 1/2"-20, | 2 |
| 3 | 8.719-081.0 | Latch, Spring Flush Head (878961) | 1 | 8 | 9.804-082.0 | Washer, 1/4" Flat, Zinc | 4 |
| 4 | 9.804-301.0 | Rivet, 1/8" x 1/4", POP, AL | 2 | 9 | 9.802-773.0 | Nut, 1/4" ESNA | 4 |
| 5 | 8.719-053.0 | Rivet, 1/4" x 3/8", Grip, Blind SS | 15 | | | | |

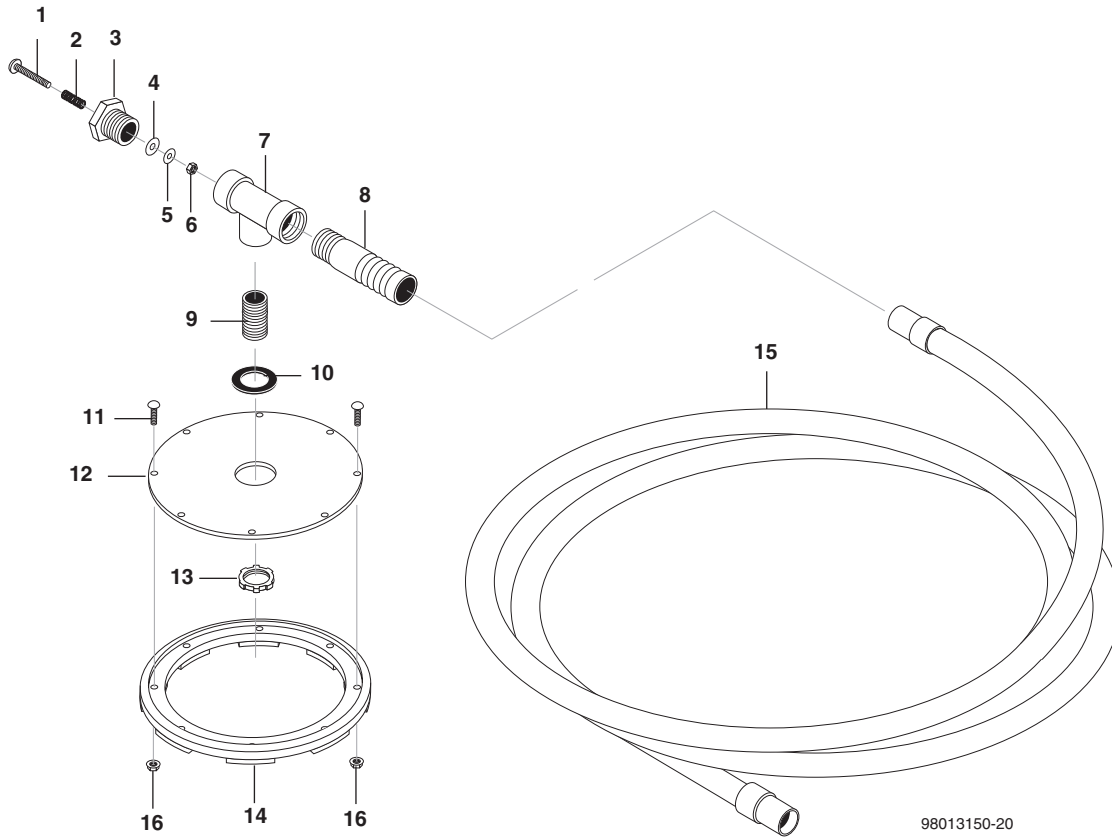
CONTROL CABINET ASSEMBLY VIEW



CONTROL CABINET ASSEMBLY VIEW PARTS LIST

| ITEM | PART NO. | DESCRIPTION | QTY | ITEM | PART NO. | DESCRIPTION | QTY |
|------|---------------------------------------|---------------------------------|-----|------|-------------|--|-----|
| 1 | See Control Cabinet Assembly | | 1 | 10 | 9.718-980.0 | Washer, 5/16" Flat | 1 |
| 2 | See Passenger Side Water Tank Assemby | | 1 | 11 | 9.802-754.0 | Screw, 1/4" x 1/2" NC, Whiz Loc Flange | 15 |
| 3 | See Chassis Assembly | | 1 | 12 | 9.802-778.0 | Nut, 5/16" Whiz Loc Flange | 4 |
| 4 | See Control Panel Assembly | | 1 | 13 | 9.803-551.0 | Screw, 5/16 x 3/4, Whiz Loc, Flange | 2 |
| 5 | See Valve Panel Assembly | | 1 | 14 | 8.719-000.0 | Washer, 5/16" x 1-1/4" Fender | 1 |
| 6 | See Transformer Box Assembly | | 1 | 15 | 9.807-369.0 | Label, Low Point Drain | 1 |
| 7 | 8.919-347.0 | Plate, Access Cover Control Box | 1 | | | | |
| 8 | 8.919-153.0 | Cover, Shelf, Control Box | 1 | | | | |
| 9 | 9.802-776.0 | Nut, 5/16" ESNA | 1 | | | | |

VACUUM HOSE ASSEMBLY

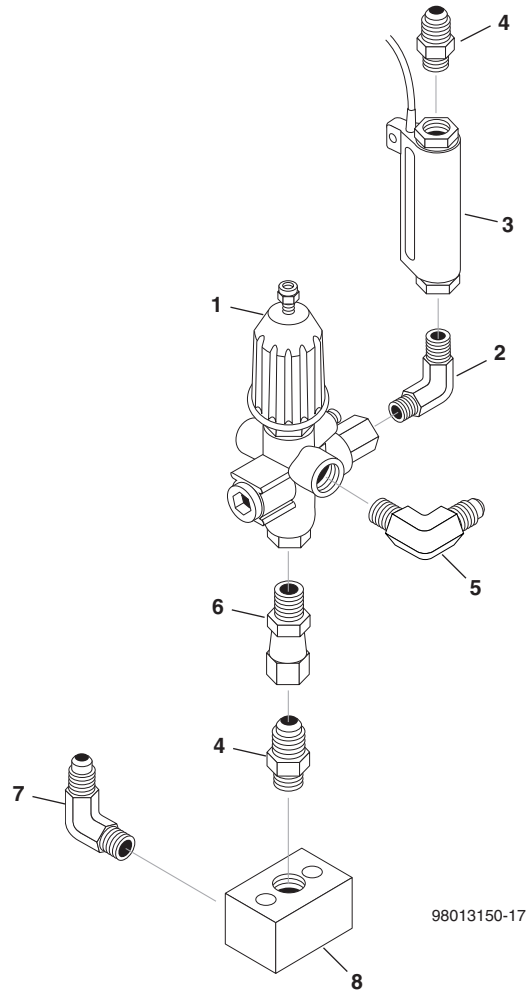


98013150-20

VACUUM HOSE ASSEMBLY PARTS LIST

| ITEM | PART NO. | DESCRIPTION | QTY | ITEM | PART NO. | DESCRIPTION | QTY |
|------|-------------|-----------------------------------|-----|------|-------------|----------------------------------|-----|
| 1 | 8.718-747.0 | Screw, 1/4" x 1", Ph Phil, SS | 1 | 9 | 8.706-424.0 | Nipple, 1.5" x Close, PVC Sch 80 | 1 |
| 2 | 5.332-130.0 | Helical Spring | 1 | 10 | 8.750-619.0 | Elbow Washer 3" Seal | 1 |
| 3 | 8.919-840.0 | Plug, 1-1/2", PVC Sch 80 | 1 | 11 | 8.718-607.0 | Bolt, 1/4-20x 3/4", Carriage | 8 |
| 4 | 8.719-002.0 | Washer, 5/16" x 1-1/4", Fender | 1 | 12 | 8.919-577.0 | Vac Disk Head | 1 |
| 5 | 8.718-977.0 | Washer, 1/4" Flat, SS | 1 | 13 | 8.750-293.0 | Locknut, 1.5" Conduit | 1 |
| 6 | 9.802-774.0 | Nut, 1/4", Esna, NC, SS | 1 | 14 | 8.767-008.0 | Radial Lip | 1 |
| 7 | 8.706-433.0 | Tee, 1-1/2" T x T x T, PVC Sch 80 | 1 | 15 | 8.618-451.0 | Hose Vac 2" x 50' w/Cuffs & Hose | 1 |
| 8 | 8.750-292.0 | Nipple 1.5", Barbed | 1 | 16 | 9.802-775.0 | Nut, 1/4" Flange | 8 |

VBR8 UNLOADER EXPLODED VIEW

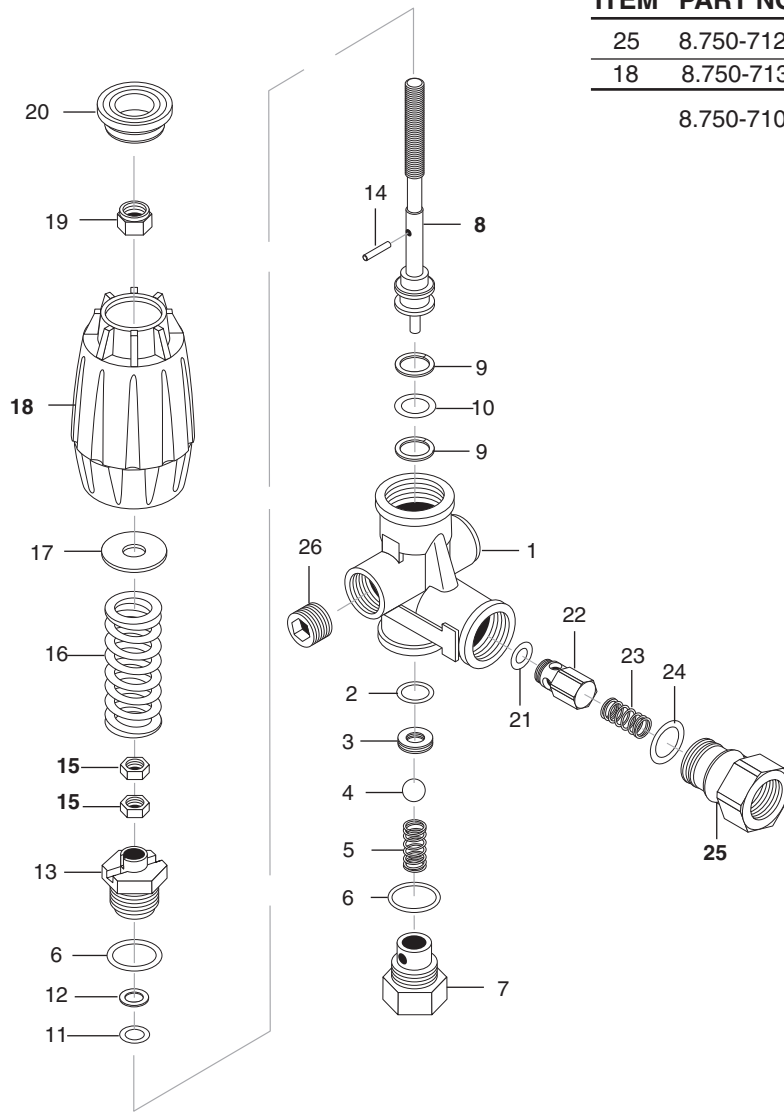


VBR8 UNLOADER EXPLODED VIEW PARTS LIST

| ITEM | PART NO. | DESCRIPTION | QTY |
|------|-------------|--|-----|
| 1 | 8.750-299.0 | Unloader, AL (VRT 607), 7.8 GPM @4200 PSI | 1 |
| 2 | 8.706-168.0 | Elbow, 3/8" MPT | 1 |
| 3 | 8.933-006.0 | Switch, Flow MV60 | 1 |
| 4 | 9.802-036.0 | Nipple, 1/2" JIC x 3/8" NPT, Steel | 2 |
| 5 | 9.802-129.0 | Elbow, 1/2" JIC x 3/8" 90° | 1 |
| 6 | 9.802-048.0 | Swivel, 1/2" JIC FPT, 3/8" MPT Steel | 1 |
| 7 | 9.802-039.0 | Elbow, 1/2" JIC x 3/8" MPT | 1 |
| 8 | 9.802-870.0 | Block, Unloader, 3/8 x 3/8, 1.25, Steel | 1 |

VRT3 UNLOADER EXPLODED VIEW AND PARTS LIST

8.750-299.0, 8 GPM, 4500 PSI



| ITEM | PART NO. | DESCRIPTION | QTY |
|------|-------------|------------------------------------|----------------------------|
| 25 | 8.750-712.0 | Outlet Fitting | 1 |
| 18 | 8.750-713.0 | Knob, Unloader | 1 |
| | | 8.750-710.0 | Repair Kit, VRT3, 4500 PSI |
| | | (Kit Items: 1, 4, 8-12, 16, 21-22) | |

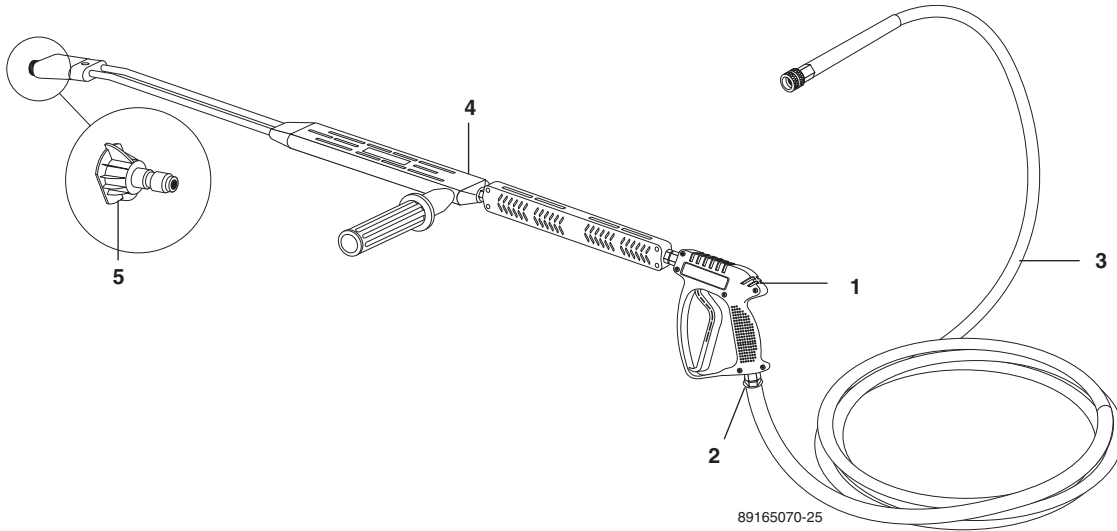
Unloader Adjustment Procedures

1. Remove lock nut (Item 19).
2. Remove adjustment knob (Item 18).
3. Loosen the two (2) nuts (Item 15), move them upward on stem (Item 8) until you see 4 or more threads below the nut.
4. Re-attach adjusting knob (Item 18).
5. Start machine. Open the trigger of the spray gun. Increase pressure by turning adjustment knob (Item 18) clockwise until pressure is at the desired operating pressure.
6. Remove the adjustment knob (Item 18), tighten the lower nut (Item 15) tightly against the upper nut (Item 15). Re-attach adjustment knob (Item 18) and screw down until contact is made with the nuts (Items 15). Screw down lock nut (Item 19) onto the stem (Item 8) until the threads cut into the nylon insert of the lock nut (Item 19).

*If adjustment knob (Item 18) **DOES NOT** make contact with upper nut (Items 15), remove adjusting knob (Item 18), re-adjust (raise) nuts (Items 15) on stem (Item 8) and re-attach adjustment knob (Item 18), then repeat step #6.

If adjustment knob (Item 18) **DOES make contact with upper nut; release the trigger of the spray gun and watch the pressure gauge for the pressure increase ("spike"). This "spike" **SHOULD NOT** exceed 500 psi above the operating pressure. If "spike" pressure exceeds the 500 psi limit, remove the adjusting knob (Item 18) and re-adjust (lower) the nuts (Items 15) on the stem (Item 8). Re-attach the adjusting knob (Item 18), then repeat step #6.

HOSE & SPRAY GUN EXPLODED VIEW



HOSE & SPRAY GUN EXPLODED VIEW PARTS LIST

| ITEM | PART NO. | DESCRIPTION | QTY |
|------|-------------|--|-----|
| 1 | 8.749-170.0 | Gun, Shut-off, Landa, 5000 PSI, 10.5 GPM | 1 |
| 2 | 9.802-171.0 | Coupler 3/8" Plug, Male, Steel/Zinc | 1 |
| 3 | 8.917-060.0 | Hose, 3/8" x 50, 2W, TF, SOXSW, CP | 1 |
| 4 | 8.711-293.0 | Wand, VP ZNC 1/4" AL 344 w/CPLR w/Soap NZZ | 1 |
| 5 | 8.712-353.0 | Nozzle, SAQCMEG 0005, Red | 1 |
| | 8.712-354.0 | Nozzle, SAQCMEG 1505, Yellow | 1 |
| | 8.712-355.0 | Nozzle, SAQCMEG 2505, Green | 1 |
| | 8.712-356.0 | Nozzle, SAQCMEG 4005, White | 1 |

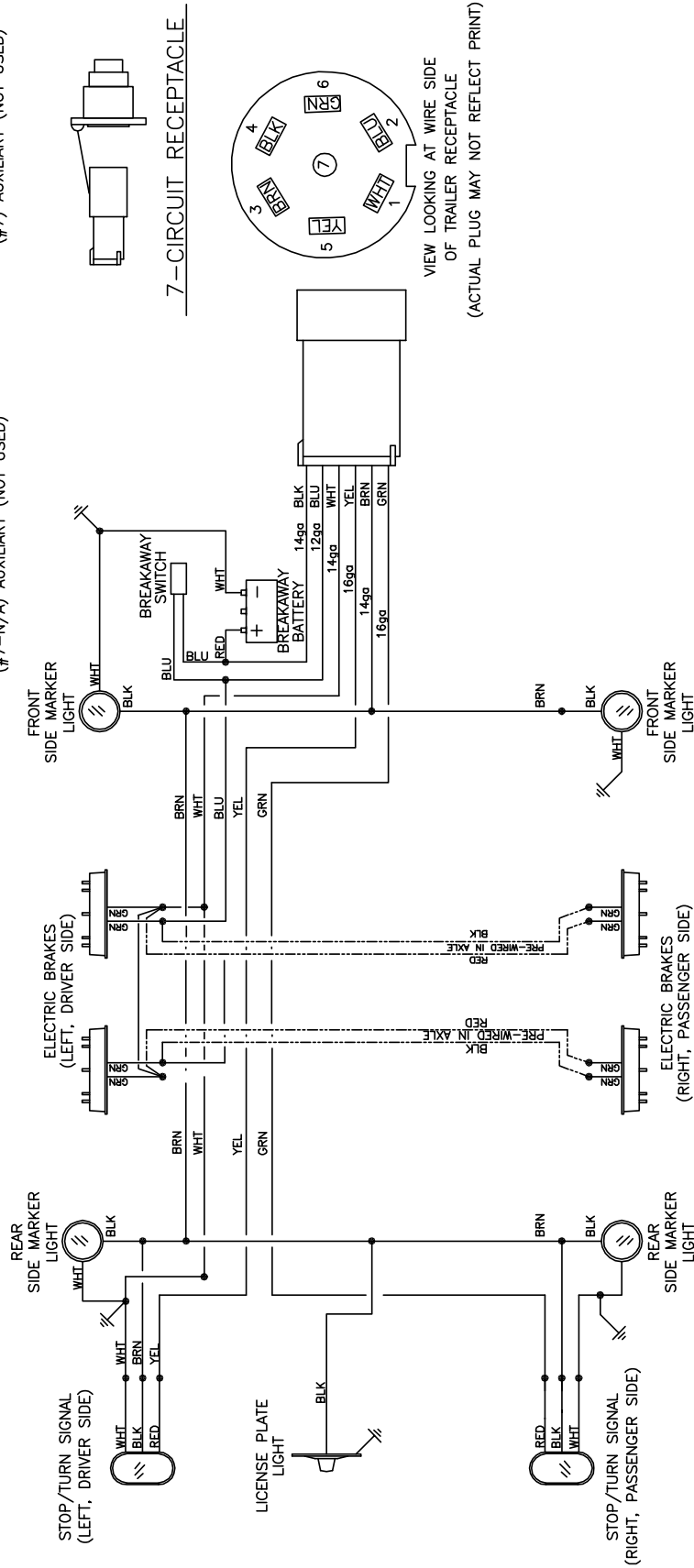
WIRING DIAGRAM TRAILER LIGHTS

TRAILER

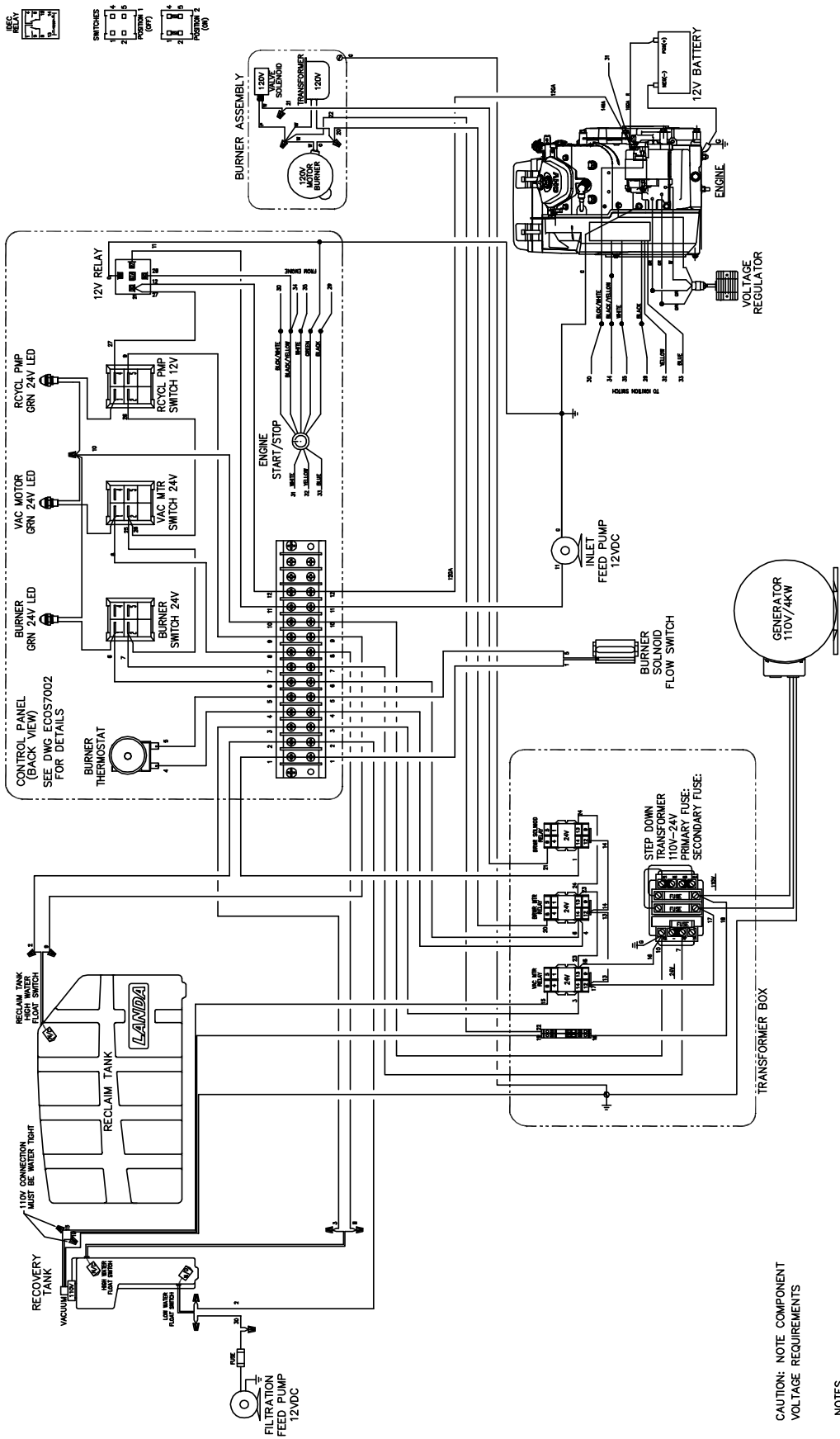
- (#1-WHITE) COMMON GROUND TO FRAME
- (#2-BLUE) ELECTRIC BRAKE
- (#3-BROWN) TAIL,RUNNING,LICENSE LIGHTS
- (#4-BLACK) AUXILIARY,DOME,CHARGE LINE
- (#5-YELLOW) LEFT STOP & TURN LIGHTS
- (#6-GREEN) RIGHT STOP & TURN LIGHTS
- (#7-N/A) AUXILIARY (NOT USED)

TOW VEHICLE

- (#1) COMMON GROUND
- (#2) ELECTRIC BRAKE
- (#3) TAIL,RUNNING,LICENSE LIGHTS
- (#4) AUXILIARY,DOME,CHARGE LINE
- (#5) LEFT STOP & TURN LIGHTS
- (#6) RIGHT STOP & TURN LIGHTS
- (#7) AUXILIARY (NOT USED)



WIRING DIAGRAM TRAILER LIGHTS

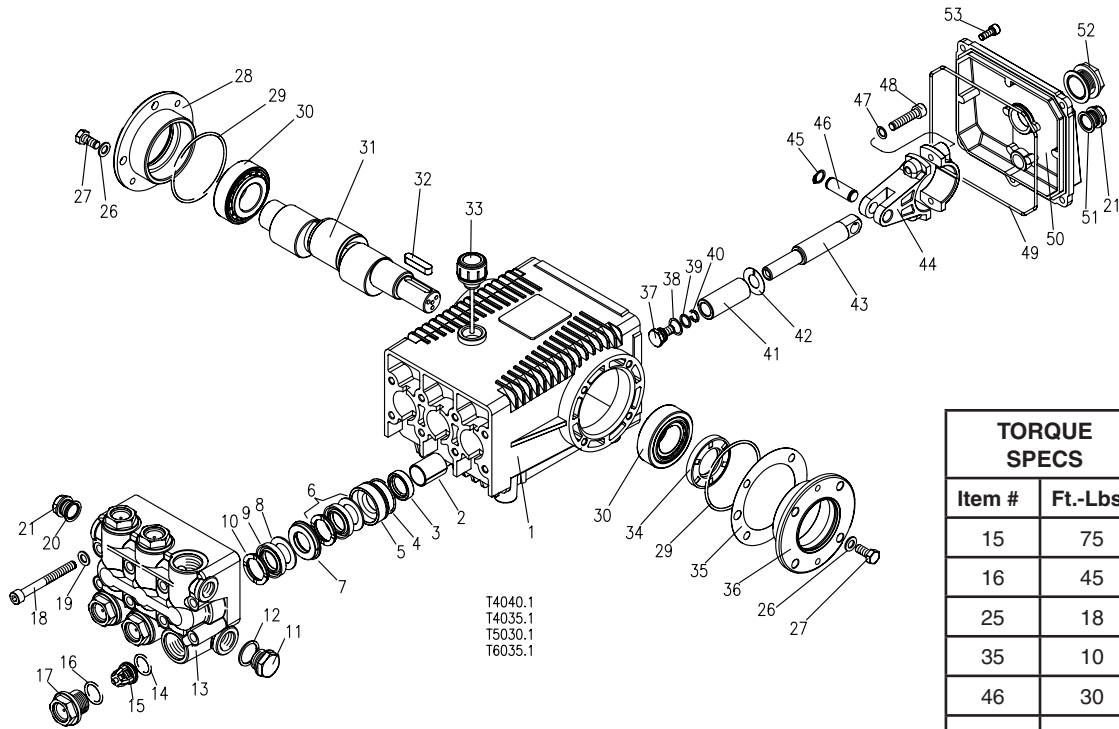


CAUTION: NOTE COMPONENT VOLTAGE REQUIREMENTS

NOTES: ALL WIRE 16GA RED UNLESS NOTED

LT.1 PUMP EXPLODED VIEW AND PARTS LIST

8.904-881.0 LT6035.1 Right



T4040.1
T4035.1
T5030.1
T6035.1

| TORQUE SPECS | |
|--------------|----------|
| Item # | Ft.-Lbs. |
| 15 | 75 |
| 16 | 45 |
| 25 | 18 |
| 35 | 10 |
| 46 | 30 |
| 51 | 7.6 |

| ITEM | PART NO. | DESCRIPTION | QTY |
|------|---------------|-----------------------------|-----|
| 1 | 9.803-163.0 | Crankcase | 1 |
| 2 | 9.803-195.0 | Plunger Guide | 3 |
| 3* | See Kit Below | Plunger Oil Seal | 3 |
| 4* | See Kit Below | O-Ring Ø1.78 x 31.47 | 3 |
| 5* | See Kit Below | "Pressure Ring, Brass | 3 |
| 6* | See Kit Below | "U" Seal Low Pressure | 3 |
| 7* | See Kit Below | Intermediate Ring, Brass | 3 |
| 8* | See Kit Below | Support Ring, Teflon Bronze | 3 |
| 9 | See Kit Below | "U" Seal High Pressure | 3 |
| 10 | See Kit Below | Support Ring | 3 |
| 11 | 9.802-926.0 | Brass Plug, 1/2" | 1 |
| 12* | 9.803-199.0 | Copper Washer 1/2" | 1 |
| 13* | 9.802-933.0 | Manifold Head | 1 |
| 14* | See Kit Below | O-Ring Ø2.62 x 17.13 | 6 |
| 15 | See Kit Below | Valve Assembly | 6 |
| 16 | See Kit Below | O-Ring Ø2.62 x 20.29 | 6 |
| 17 | 9.802-928.0 | Valve Plug | 6 |
| 18 | 9.802-943.0 | Manifold Stud Bolt | 8 |

| ITEM | PART NO. | DESCRIPTION | QTY |
|------|-------------|---------------------------------------|-----|
| 19 | 9.802-890.0 | Washer | 8 |
| 20* | 9.803-198.0 | Copper Washer 3/8" | 1 |
| 21* | 9.802-925.0 | Brass Plug 3/8" | 1 |
| 26 | 9.802-884.0 | Washer | 8 |
| 27 | 9.802-944.0 | Hexagonal Screw | 8 |
| 28 | 9.803-182.0 | Closed Bearing Housing | 1 |
| 29 | 9.803-186.0 | O-Ring Ø2.62 x 71.12 | 2 |
| 30 | 9.803-160.0 | Roller Bearing, Tapered | 2 |
| 31 | 9.803-148.0 | Crankshaft (GT4040.1, 5030.1, 6035.1) | 1 |
| | 9.803-149.0 | Crankshaft (GT 4035.1) | |
| 32 | 9.803-167.0 | Crankshaft Key | 1 |
| 33 | 9.802-923.0 | Oil Dip Stick | 1 |
| 34 | 9.803-139.0 | Crankshaft Seal | 1 |
| 35 | 9.803-177.0 | Shim | 2 |
| 36 | 9.803-181.0 | Bearing Housing | 1 |
| 37* | 9.803-235.0 | Plunger Bolt | 3 |
| 38* | 9.802-886.0 | Copper Spacer | 3 |

LT.1 PUMP EXPLODED VIEW PART LIST (CONT.)

| ITEM | PART NO. | DESCRIPTION | QTY |
|------|---------------|-----------------------|-----|
| 39* | 9.803-187.0 | O-Ring Ø1.78 x10.82 | 3 |
| 40* | 9.803-154.0 | Teflon Ring | 3 |
| 41* | See Kit Below | Plunger | 3 |
| 42* | See Kit Below | Copper Spacer | 3 |
| 43 | 9.803-143.0 | Plunger Rod | 3 |
| 44 | 9.803-157.0 | Connecting Rod | 3 |
| 45 | 9.802-912.0 | Snap Ring | 6 |
| 46 | 9.802-915.0 | Connecting Rod Pin | 3 |
| 47 | 9.802-889.0 | Spring Washer | 6 |
| 48 | 9.802-937.0 | Connecting Rod Screw | 6 |
| 49 | 9.803-194.0 | O-Ring Ø2.62 x 152.07 | 1 |
| 50 | 9.803-166.0 | Crankcase Cover | 1 |
| 51 | 9.803-197.0 | Gasket, G3/8 | 1 |
| 52 | 9.803-202.0 | Sight Glass G3/4 | 1 |
| 53 | 9.802-939.0 | Cover Screw | 5 |

* Part available in kit (See below)

| REPAIR KIT NUMBER | 8.916-488.0 | 8.916-322.0 | 9.802-607.0 | 9.802-603.0 | 9.802-606.0 |
|--------------------------------------|---|---|--|----------------------------------|-------------------------------------|
| KIT DESCRIPTION | Plunger "U" Seal 20mm LT-4040.1, LT-6035.1 LT-4035.1 | "U" Seal Pack- ing Assy 20mm LT-4040.1 LT-6035.1 LT-4035.1 | Plunger 20mm LT-4040.1 LT-6035.1 LT-4035.1 | Complete Valve (all pumps) | Plunger Oil Seals (all pumps) |
| ITEM NUMBERS INCLUDED | 4, 7, 22 | 4, 5, 6, 7, 8, 20, 21, 22, 23 | 35, 36, 37, 38, 39, 40 | 12, 13, 14 | 3 |
| NUMBER OF CYLINDERS KIT WILL SERVICE | 3 | 1 | 1 | 6 | 3 |

TROUBLESHOOTING

| PROBLEM | POSSIBLE CAUSE | SOLUTION |
|---|--|--|
| BURNER WILL NOT LIGHT (continued from previous page) | Flex coupling slipping on fuel pump shaft or burner motor shaft | Replace if needed. |
| | On-Off switch defective | Check for electrical current reaching burner assembly with burner switch on. |
| | Heavy sooting on coil and burner can cause interruption of air flow and shorting of electrodes | Clean as required. |
| | Improper electrode setting | Check and reset according to diagram in Operator's Manual. |
| | Fuel not reaching combustion chamber | Check fuel pump for proper flow. Check solenoid flow switch on machines with spray gun control, for proper on-off fuel flow control. |
| | Clogged burner nozzle | Clean as required. |
| | Thermostat faulty or slow engine speed | Increase engine RPM to increase voltage. |
| | Flow switch malfunction | Remove, test for continuity and replace as needed. |
| | Flow solenoid malfunction | Replace if needed. |
| FLUCTUATING PRESSURE | Valves worn | Check and replace if necessary. |
| | Blockage in valve | Check and replace if necessary. |
| | Pump sucking air | Check water supply and air seepage at joints in suction line. |
| | Worn piston packing | Check and replace if necessary. |
| | Gasoline Engine Altitude | The gasoline engine is preset for operation at altitudes below 1000 feet above sea level. If operated at higher altitudes, it may be necessary to install a high altitude main jet in the carburetor. Contact your local authorized engine sales and service center for details. |
| MACHINE SMOKES | Improper fuel or water in fuel | Drain tank and replace contaminated fuel. |
| | Improper air adjustment | Readjust air bands on burner assembly. |
| | Low fuel pressure | Adjust fuel pump pressure to specifications. |
| | Plugged or dirty burner nozzle | Replace nozzle. |
| | Faulty burner nozzle spray pattern | Replace nozzle. |
| | Heavy accumulation of soot on coils and burner assembly | Remove coils and burner assembly, clean thoroughly. |
| | Misaligned electrode setting | Realign electrodes to specifications. |

PREVENTATIVE MAINTENANCE

This trailer was produced with the best available materials and quality craftsmanship. However, you as the owner, have certain responsibilities for the correct care of the equipment. Attention to regular preventative maintenance procedures will assist in preserving the performance of your equipment.

| MAINTENANCE SCHEDULE | | |
|---|--|---------------------------|
| Tire Air Pressure | Inflate to proper pressure indicated on sidewall | Every Trip |
| Wheel Lugs, Bolts & Nuts | Tighten to proper torque specifications | Every 3000 mi or 3 mos.* |
| Wheel | Check for damage and or out-of-round | Every 6000 mi or 6 mos. |
| Coupler Ball | Check for sufficient lube. Check lock mechanism. Check for unusual wear. | Every trip |
| Safety Chains at Hitch Ball | Check for abrasion, distortion and general integrity of links. | Every trip |
| Coupler | Check for proper fastening & hitch pin in position and secure. | Every trip |
| Brakes | Check for proper adjustment & operation | Every trip |
| Breakaway Switch | Test switch operation and connections | Every trip |
| Breakaway Battery | Pull switch pin, check charge indicator light | Every trip |
| Load Distribution | Check load distribution & security | Every trip |
| Leveling Jacks | Check fastenings. Lube. | Every trip |
| Welds | Check all weld beads for cracks or separations | Every 6000 mi. or 6 mos. |
| Hinges | Grease zerks with a Lithium complex grease | Every 3000 mi. or 3 mos. |
| Tie Down Devices | Check for fracturing, distortion and improper anchoring. | Every 3000 mi., or 3 mos. |
| Electrical: Lights & Signals | Check to make sure all are working properly. Replace burned out bulbs. | Every trip |
| * Check lug nuts for tightness before initial trip, at 10 miles, 25 miles and 50 miles. Recheck at least every 3 months or 3000 miles | | |

Axles, Hubs and Brakes

Your Landa trailer is equipped with Dexter Component Axles. The Dexter Owner's Manual is included in the materials received with your trailer. Maintenance for axles, hubs and brakes is extremely important for protecting the longevity of your trailer. It is extremely important for your personal safety and the protection of others. Follow the Dexter service recommendations exactly as described.

Please, never shortcut axle, hub and brake service and maintenance.



LANDA LIMITED TRAILER WARRANTY
(Effective April 1999)

We warrant to the original purchaser that each new part and accessory sold by Landa will be free from manufacturing defects in materials or workmanship in normal service for a period of one (1) year from date of purchase, provided it is installed properly and the equipment maintained in accordance with Landa's instructions and manuals.

Our obligation under this warranty is expressly limited. As to the replacement or repair, at our option, at Landa Inc., Camas, Washington 98607, or at a service facility designated by us, for such part or parts as inspection shall disclose to have been defective.

EXCLUSIONS:

This warranty does not apply to defects caused by casualty or unreasonable use, including faulty repairs by others and failure to provide reasonable and necessary maintenance.

THE FOLLOWING ITEMS ARE NOT COVERED BY THIS WARRANTY:

Suspension axles, torflex axles, hubs, drums, brakes, bearings and seals. These are subject to the warranties, if any of their manufacturers.

WE SHALL NOT BE LIABLE FOR SPECIAL, INDIRECT, INCIDENTAL, OR CONSEQUENTIAL DAMAGES OF ANY KIND, including but not limited to labor costs or transportation charges in connection with the replacement or repair of defective parts.

ANY IMPLIED OR STATUTORY WARRANTIES, INCLUDING WARRANTY OF MERCHANTABILITY OR FITNESS FOR A PARTICULAR PURPOSE, ARE EXPRESSLY LIMITED TO THE DURATION OF THIS WRITTEN WARRANTY. We make no other express warranty, nor is anyone authorized to make any in our behalf.

Some states do not allow limitations on how long an implied warranty lasts or the exclusion or limitation of incidental or consequential damages, so the above limitation or exclusion may not apply to you.

This warranty gives you specific legal rights and you may also have other rights which vary from state to state.

TO OBTAIN WARRANTY SERVICE:

Purchaser must bring the trailer to an authorized Landa Dealership. For the dealership nearest you consult our web page: www.landa-inc.com.

LANDA[®]

Form #9.801-315.0 • Revised 6/11 • Printed in U.S.A.