

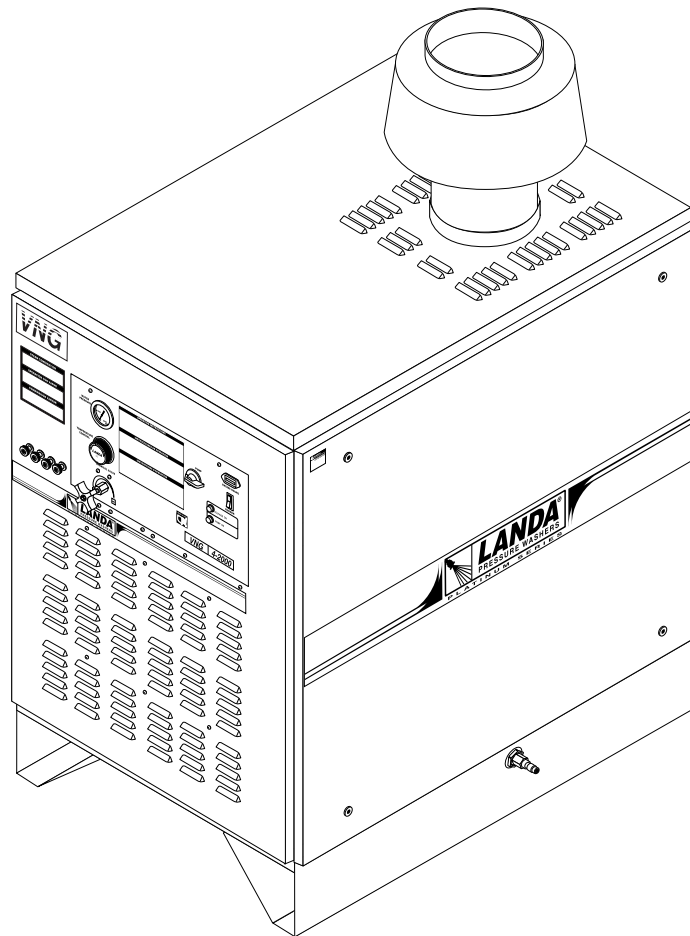


PLATINUM SERIES

# VNG VLP

# OPERATOR'S MANUAL

- |                     |                     |                     |
|---------------------|---------------------|---------------------|
| ■ VNG/VLP3-11021D   | ■ VNG/VLP4-30021A   | ■ VNG/VLP6-30021C   |
| ■ VNG/VLP3-11021D/R | ■ VNG/VLP4-30021A/R | ■ VNG/VLP6-30021C/R |
| ■ VNG/VLP4-20021A   | ■ VNG/VLP4-30021B   | ■ VNG/VLP6-30021F   |
| ■ VNG/VLP4-20021A/R | ■ VNG/VLP4-30021B/R | ■ VNG/VLP6-30021F/R |
| ■ VNG/VLP4-20021B   | ■ VNG/VLP4-30021C   | ■ VNG/VLP8-25021B   |
| ■ VNG/VLP4-20021B/R | ■ VNG/VLP4-30021C/R | ■ VNG/VLP8-25021B/R |
| ■ VNG/VLP4-20021C   | ■ VNG/VLP4-30021F   | ■ VNG/VLP8-25021C   |
| ■ VNG/VLP4-20021C/R | ■ VNG/VLP4-30021F/R | ■ VNG/VLP8-25021C/R |
| ■ VNG/VLP4-20021F   | ■ VNG/VLP6-30021B   | ■ VNG/VLP8-25021F   |
| ■ VNG/VLP4-20021F/R | ■ VNG/VLP6-30021B/R | ■ VNG/VLP8-25021F/R |



**LANDA, INC. ■ 4275 NW Pacific Rim Blvd ■ Camas, WA 98607 ■ USA**

For technical assistance or the Landa Dealer nearest you, call 800-LANDA-4-U (800-526-3248) or (360) 833-9100  
or consult our web page at [www.landa-inc.com](http://www.landa-inc.com)

# CONTENTS

Introduction .....	5
Important Safety Information .....	5
Installation .....	5-11
Location .....	6
Installation Guide .....	7
Gas Codes .....	8
Electrical .....	8
Gas Piping .....	8
Propane Gas .....	8
Natural Gas .....	9
Venting .....	9
Draft Diverter .....	9
Water Source .....	9
Water Connection .....	9
Inspecting & Testing Gas Piping .....	10
Gas Pressure .....	10
Warning and Check Lists .....	10-11
Operating Instructions .....	12
Preventative Maintenance .....	12
General Operating Techniques .....	12
Component Identification .....	13-14
Maintenance & Service .....	15
Spray Nozzles .....	15
Unloader Valves .....	15
Winterizing Procedures .....	15
Low Pressure Diagnosis .....	15
High Limit Hot Water Thermostat .....	15
Pumps .....	15
Heating Coil .....	15
Condensation from Heating Coil .....	15
Check Water Heater Coil for Leaks .....	15
Delimiting Coil .....	15-16
Gas Valve Regulator Adjustment .....	16
Pressure Relief Valve .....	16
Propane Gas .....	16

# CONTENTS

Burner Features .....	16
Operated Automatic Valve .....	16
Care of Main Burner .....	16-17
To Clean Burner Jets .....	17
VNG Control Panel .....	18
VNG Control Panel Parts List .....	19
VNG-L Exploded View, Left Side .....	20
VNG-L Exploded View, Right Side .....	21
VNG-L Parts List .....	12-23
VNG-L Burner Assembly .....	24
VNG-L Burner Assembly Parts List .....	25
VNG-S Exploded View, Left Side .....	26
VNG-S Exploded View, Right Side .....	27
VNG-S Parts List .....	28-30
VNG6-3000 Pump Assembly .....	31
Variable Pressure Wand #4-011142A .....	32
Variable Pressure Wand #4-011143A .....	33
VNG Electrical Box .....	34
VNG Electrical Box Parts List .....	35
VNG Remote Electrical Box .....	36
Troubleshooting .....	37-41
Burner Specifications .....	42
Basic Facts .....	43
Pressure Equivalents .....	43
Preventative Maintenance Schedule .....	44
Oil Change Record .....	44
Warranty .....	45

Model Number \_\_\_\_\_

Serial Number \_\_\_\_\_

Date of Purchase \_\_\_\_\_

The model and serial numbers will be found on a decal attached to the pressure washer. You should record both serial number and date of purchase and keep in a safe place for future reference.

## INTRODUCTION

Thank you for purchasing a Landa Pressure Washer.

This manual covers the operation and maintenance of the VNG/VLP3-11021D, 3-11021D/R, 4-20021A, 4-20021A/R, 4-20021B, 4-20021B/R, 4-20021C, 4-20021C/R, 4-20021F, 4-20021F/R, 4-30021A, 4-30021A/R, 4-30021B, 4-30021B/R, 4-30021C, 4-30021C/R, 4-30021F, 4-30021F/R, 6-30021B, 6-30021B/R, 6-30021C, 6-30021C/R, 6-30021F, 6-30021F/R, 8-25021B, 8-25021B/R, 8-25021C, 8-25021C/R, 8-25021F, and 8-25021F/R washers. All information in this manual is based on the latest product information available at the time of printing.

Landa, Inc. reserves the right to make changes at any time without incurring any obligation.

**The VNG/VLP Series was designed for commercial duty 8 hours per day, 5 days per week.**

### Owner/User Responsibility:

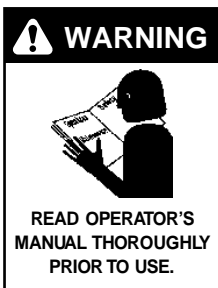
The owner and/or user must have an understanding of the manufacturer's operating instructions and warnings before using this Landa pressure washer. Warning information should be emphasized and understood. If the operator is not fluent in English, the manufacturer's instructions and warnings shall be read to and discussed with the operator in the operator's native language by the purchaser/owner, making sure that the operator comprehends its contents.

Owner and/or user must study and maintain for future reference the manufacturers' instructions.

**This manual should be considered a permanent part of the machine and should remain with it if unit is resold.**

**When ordering parts, please specify model and serial number.**

## IMPORTANT SAFETY INSTRUCTIONS



**WARNING:** To reduce the risk of injury, read operating instructions carefully before using.

1. Read the owner's manual thoroughly. Failure to follow instructions could cause malfunction of the unit and result in death, serious bodily injury and/or property damage.

2. All installations must comply with local codes. Contact your electrician, plumber, utility company or the selling distributor for specific details.



**WARNING:** Flammable liquids can create fumes which can ignite causing property damage or severe injury.

3. Risk of explosion - do not spray flammable liquids or operate in an explosive location. Operate only where open flame or torch is permitted.



**WARNING:** Keep water spray away from electrical wiring or fatal electric shock may result. Read warning tag on electrical cord.

4. To protect the operator from electrical shock, the machine must be electrically grounded. It is the responsibility of the owner to connect this machine to a UL grounded receptacle of proper voltage and am-

perage ratings. Do not spray water on or near electrical components. Do not touch machine with wet hands or while standing in water. Always disconnect power before servicing.

**WARNING:** Gun kicks back. Hold with both hands.

5. Grip cleaning wand securely with both hands before starting the cleaner. Failure to do this could result in injury from a whipping wand.



**WARNING:** Equipment can produce a high pressure stream of fluid that can pierce skin and its underlying tissues, leading to serious injury and possible amputation.

6. High pressure developed by these units can cause personal injury or equipment damage. Use caution when operating. Do not direct discharge stream at people, or severe

injury and/or death may result. This machine is to be used only by qualified operators.

7. Never make adjustments on machine while in operation.



**WARNING:** High pressure can cause paint chips or other particles to become airborne and fly at high speeds.

8. Eye safety devices and foot protection must be worn when using this equipment.



**WARNING: Risk of asphyxiation. Use this product in a well ventilated area.**

9. When the unit is working, do not cover or place in a closed space where ventilation is insufficient.
10. Units with shut-off gun should not be operated with the trigger in the off position for extensive periods of time as this may cause damage to the pump.
11. Protect from freezing.
12. Be certain all quick coupler fittings are secured before using pressure washer.
13. Do not allow acids, caustic, or abrasive fluids to pass through the pump.
14. Inlet water must be cold.
15. Do not allow CHILDREN to operate the pressure washer at any time.
16. The best insurance against an accident is precaution, and knowledge of the machine.
17. Do not operate this product when fatigued or under the influence of alcohol or drugs. Keep operating area clear of all persons.
18. Do not replace LP Tank while unit is running. Serious injury could result.

**WARNING: Use vapor fuel only.**

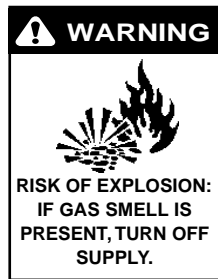


19. The VLP models are designed to run on vapor propane fuel. Do not use liquid fuel. Have a qualified serviceman install and service your equipment.

20. Never expose a spark or flame where there may be unburned gas present.

21. L.P. gases are heavier than air and will spill out on the floor. Therefore always provide adequate space and ventilation around these units. Install the machine 18" above the floor.

22. Landa will not be liable for any changes made to our standard units, or any components not purchased from Landa.
23. Do not overreach or stand on unstable support. Keep good footing and balance at all times.
24. Follow the maintenance instructions specified in the manual.
25. When making repairs disconnect from electrical source and shut off gas valve.
26. Turn burner off and cool to 100° before turning machine off.



**WARNING: If you smell gas, shut off the gas supply to the appliance**

27. Extinguish any open flame, and test all joints with a soap solution. If the odor persists, call your gas supplier immediately.
28. This machine must be attended during operation.
29. Not suitable for connection to Type B gas vent if the stack temperature exceeds 243° C (470° F).
30. A draft hood shall be installed if this machine is going to be permanently installed and vented to the outside of the building.

## INSTALLATION

Place machine in a convenient location providing ample support, draining and room for maintenance.

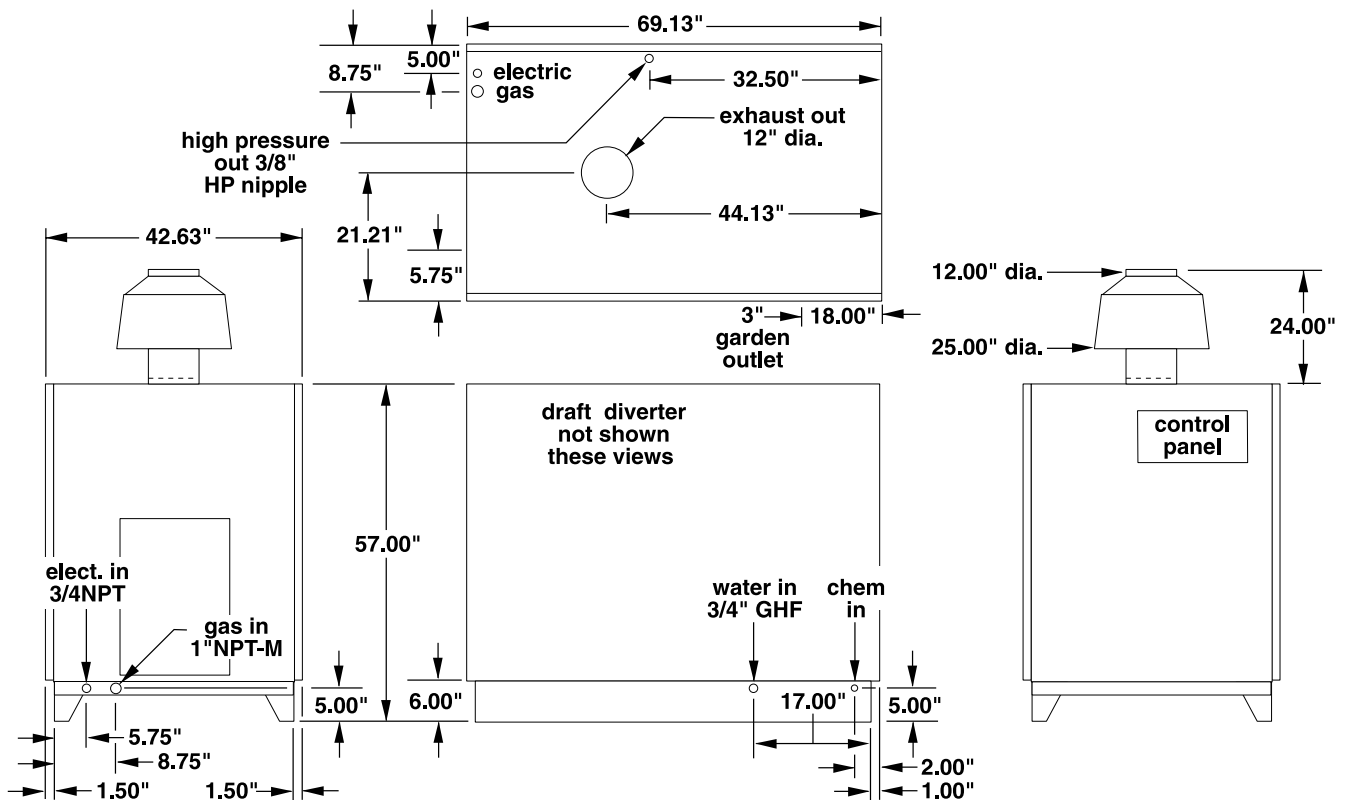
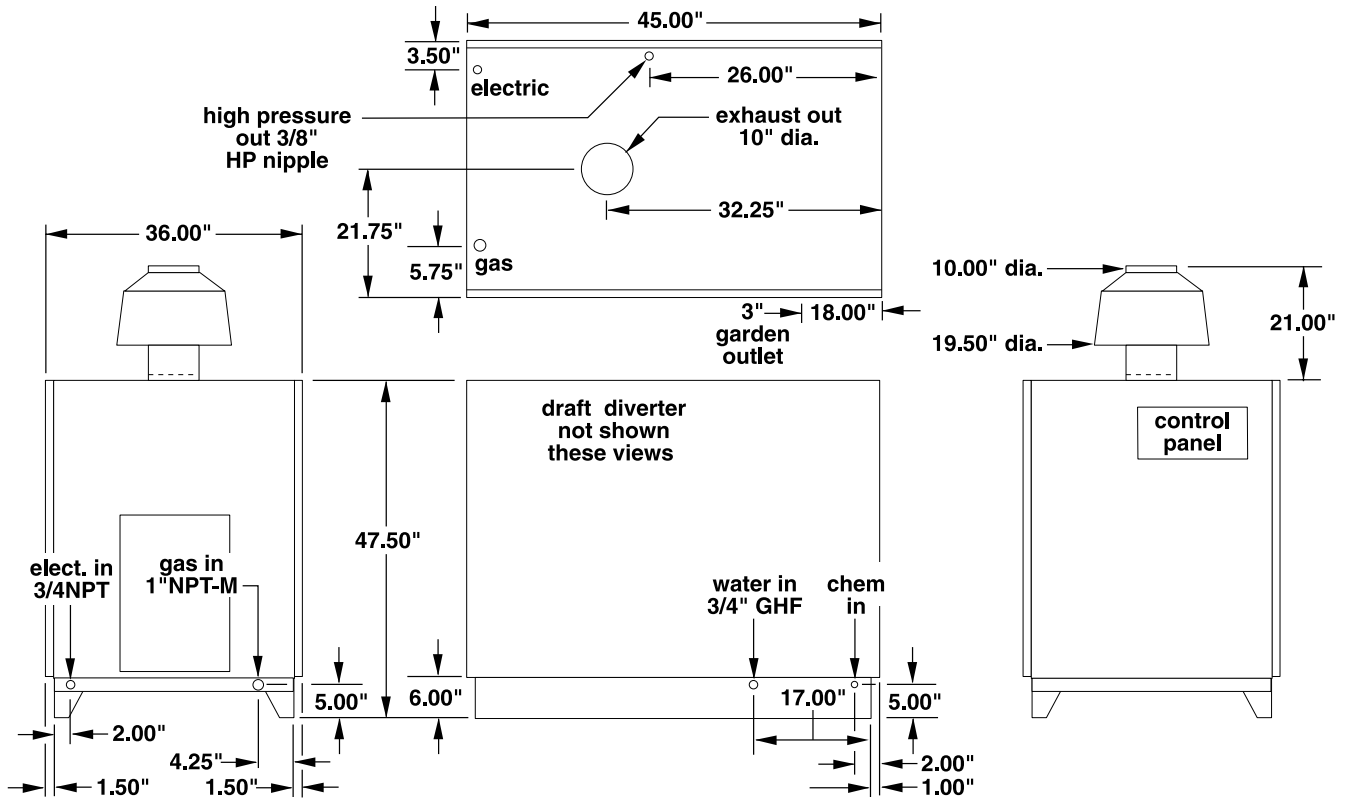
### Location:

This machine is certified for indoor installation. Its location should protect the machine from damaging environmental conditions, such as wind, rain and freezing.

1. The machine should be run on a level surface where it is not readily influenced by outside sources such as strong winds, freezing temperatures, rain, etc. The unit should be located considering accessibility of the components and the refilling of detergents, adjustments and maintenance. Normal precautions should be taken by the operator of the unit to prevent excess moisture from reaching the power unit or electrical controls.
2. It is recommended that a partition be made between the wash area and the machine to prevent direct spray from the gun from coming in contact with the machine. Excess moisture reaching the pressure washer or the electrical controls will reduce the life of the unit and may cause electrical shorts.
3. During installation of the unit, beware of poorly ventilated locations or areas where exhaust fans may cause an insufficient supply of oxygen. Sufficient combustion can only be obtained when there is a sufficient supply of oxygen available for the amount of fuel being burned. If it is necessary to install a unit in a poorly ventilated area, outside fresh air may have to be piped to the burner and a fan installed bringing the air into the area
4. Do not locate near any combustible material. Keep all flammable material at least 20 feet away.  
Allow enough space for servicing the unit.  
Local code will require certain distances from floor and walls. (Two feet away should be adequate.)

**AVOID SMALL LOCATIONS OR AREAS NEAR EXHAUST FANS.**

## VNG Installation Guide



## Gas Codes:

Confer with local gas company and with proper municipal officials regarding any specific code or regulations governing the installation. The installation must conform to local codes.

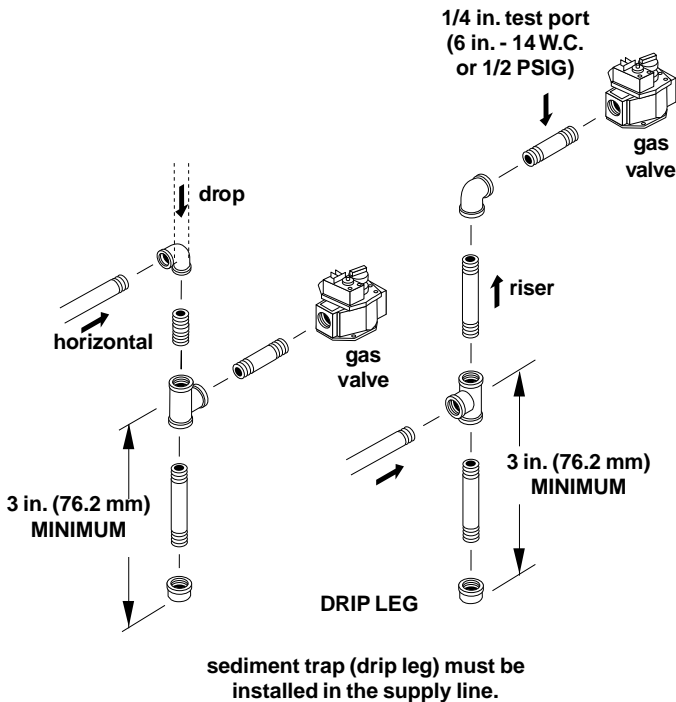
## Electrical:

The unit, when installed, must be electrically grounded in accordance with local codes. Check for proper power supply using a volt meter; check the serial plate for the correct requirements.

## Gas Piping:

All piping must comply with local codes and ordinances of the National Fuel Gas Code. A sediment trap or drip leg must be installed in the supply line to the burner.

**Figure 1**

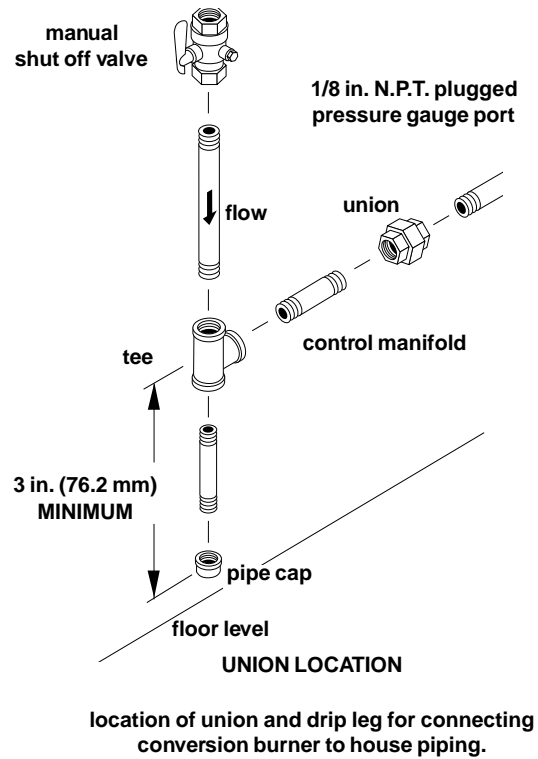


A union shall be installed in the gas line adjacent to and upstream from the control manifold and downstream from the manual main shut-off valve.

A 1/8" N.P.T. plugged tapping accessible for test gauge connection shall be installed immediately upstream of the gas supply connection for the purpose of determining the gas supply pressure to the burner, and to prevent damage to gas valve

If a manual gas shut off valve is not in the gas supply line within six feet of the machine and in an accessible location, one shall be installed.

**Figure 2**



A manual shut-off valve shall be installed in the gas supply line external to the appliance. **See Figure 2.** The gas line should be a separate supply direct from the meter to the burner. It is recommended that new pipe be used and located so that a minimum amount of work will be required in future servicing. The piping should be installed to be durable, substantial and gas tight. It should be clear and free from cutting burrs and defects in structure of threading. Cast iron fittings or aluminum tubing should not be used for the main gas circuit. Joint compounds (pipe dope) should be used sparingly on male threads only and be approved for all gases.

## Propane Gas:

The following pipe sizes should be used between the regulator and the gas valve on the burner.

Distance From Regulator	Pipe Size
0 - 50'	1" 1 PS
50' - 100'	1-1/2" 1 PS
100' - 200'	1-3/4" 1 PS

## Natural Gas:

The following pipe sizes should be used between the meter and the cleaner.

Distance From Regulator	Pipe Size
0 - 50'	1-1/2" 1 PS
50' - 100'	2" 1 PS
100' - 200'	2-1/2" 1 PS

## Venting:

Because this machine is installed indoors, regulations or ventilation concerns may call for a chimney or furnace pipe.

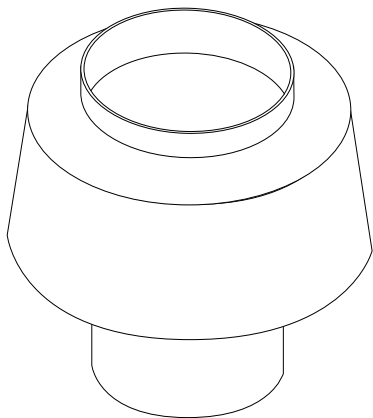
When venting the unit, if the machine is to be in an enclosed area with a stack on it, be sure the flue pipe is the same size as the stack on the machine. Poor draft will cause the unit to soot and not operate efficiently. When placing the unit for installation, keep in mind that the unit should be positioned in such a manner that the stack will be as straight as possible and protrude through the roof of the building at a proper location and at sufficient height to eliminate down draft. The flue pipe of a gas fired unit should be installed with a down draft diverter.

Input - BTU Per Hour	Draft Hood & Flue Pipe Size
250,000 - 320,000	8 inch
320,000 - 410,000	9 inch
410,000 - 600,000	10 inch
600,000 - 750,000	12 inch

## Draft Diverter:

The draft diverter should be installed at least one (1) foot above the heating coil. The diverter serves to sever the chimney effect created in all sections of flue pipe positioned below to enhance the draft through the burner. It also helps prevent freezing of the coil due to wind chill factors.

**Figure 4**

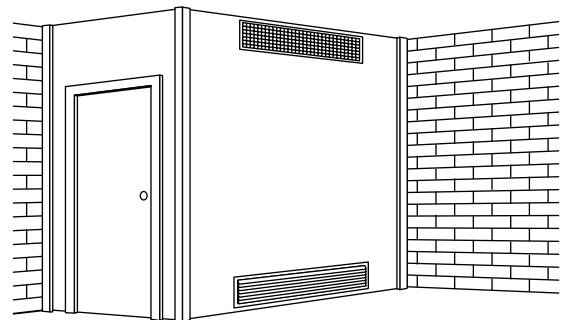


standard on all machines

When the pressure washer is installed in a tightly closed room without ventilation openings to the outdoors or other rooms, provisions shall be made for supplying air for combustion through special openings, one near the floor line and the other near the ceiling, each to be sized on the basis of one square inch or more of free area for each 1,000 BTU input per hour. See Figure 5.

When a room is of unusually tight construction and has a ventilating fan, which may be used for exhausting air to outdoors - or has a vented fireplace - it is recommended that combustion air be supplied to the enclosed room through intakes extending to the outside of the building and terminating in downturned fittings, suitably arranged to prevent obstruction from snow or rain, and including a protecting screen not smaller than 1/4 inch mesh.

**Figure 5**



ventilating air opening  
1 square inch for each  
4000 BTU per hour input.

Illustration showing air openings necessary to supply air for combustion when heating appliance is installed in an enclosed room.

## Water Source:

Water source for unit should be supplied by a 5/8" I.D. garden hose with a city water pressure of not less than 30 psi. If the water supply is inadequate, or if the garden hose is kinked, the unit will run very rough and the burner will not fire.

## Water Connection:

Connect the high pressure hose by pulling the coupler collar back and then inserting it onto the discharge nipple. Secure it by pushing the collar forward.

Attach the wand into the trigger gun using teflon tape on the pipe threads to avoid leaks.



## Inspection and Testing Gas Piping:

The building structure should not be weakened by installing the gas piping. The piping should not be supported by other piping, but should be firmly supported with gas hooks, straps, bands or hangers. Butt or lap welded pipe should not be run through or in an air duct.

Before turning gas under pressure into piping, all openings from which gas can escape should be closed. Immediately after turning on gas, the system should be checked for leaks. This can be done by watching the 1/2 cubic foot test dial and allowing 5 minutes to show any movement, or by soaping each pipe connection and watching for bubbles. If a leak is found, make the necessary repairs and repeat the above test.

Defective pipes or fittings should be replaced and not repaired. Never use a flame or fire in any form to locate gas leaks, use a soap solution.

After the piping and meter have been checked completely, purge the system of air. **DO NOT** bleed the air inside an enclosed room.

The appliance and its individual shut-off valve must be disconnected from the gas supply piping system during the pressure testing of that system at test pressure in excess of 1/2 psig or damage to the gas valve will occur.

## Gas Pressure:

The ideal incoming gas pressure is 11" wc (water column) (minimum 6" wc, maximum 14" wc or 1/2 psig). The correct operating manifold pressure for natural gas is 3.5" wc. The operating manifold pressure for propane gas is 11" wc. The gas valve pressure regulator can be adjusted between 3" and 4" wc natural gas or 6" and 11" wc for propane.

If the desired input rating cannot be obtained within the above manifold pressure adjusting range, the next size larger or smaller burner orifice should be used.

## WARNING & CHECK LIST

### WARNING

1. Installation or servicing of gas appliances and controls must only be performed by qualified personnel. After installation or servicing, test manual valve, operating valves, pressure regulation, and automatic shut-off valve for proper operation.
2. Install in a suitable dry location. The unit must be located in an area properly protected from the weather.
3. Shut off gas and electricity before starting installation or service. Turn gas back on to test or operate.
4. **DO NOT** connect pressure washer before pressure testing gas piping. Damage to gas valve may result (6" - 14" W.C.P. or 1/2 psig).
5. **DO NOT** insert any object other than suitable pipe or tubing in the inlet or outlet of the gas valve. Internal damage may occur and result in a hazardous condition.
6. **DO NOT** grip gas valve body with a pipe wrench or vise. Damage may result causing gas leakage. Use inlet or outlet bosses or a special body wrench.
7. **DO NOT** short the gas valve terminals.
8. **DO NOT** allow any flame to impinge on the regulator vent tubing if supplied. It may clog and cause gas valve malfunction.
9. **DO NOT** use the gas cock to adjust the gas flow.
10. In case main burner fails to shut off, turn off gas supply.
11. Keep all combustible materials away from gas appliances. **DO NOT** allow lint or dust to collect in burner area.
12. Dials must only be operated by hand. Never use pliers, wrenches or other tools to turn dials.
13. Leak test with a soap solution after installation or service with the main burner on. Coat pipe and tubing joints, gaskets, etc. Bubbles indicate leaks.
14. If the unit is installed in an enclosed room, care should be taken to ensure that an adequate supply of air is available for combustion and ventilation (1 sq. inch per 1000 BTU).

## CHECK LIST BEFORE STARTING:

YES NO

Has gas supply been inspected by an authorized contractor to meet local codes?		
Is unit protected from downdraft and excessive wind?		
Is unit shielded from moisture or water spray?		
Is the voltage correct and are the circuit breaker and supply cord adequate according to specifications and serial plate notation?		
Is the unit electrically grounded?		
Is there ample water supply?		
Have all flammable liquids or gases been removed from installation location?		
Is there adequate gas supply for the BTU rating of the burner?		
Is incoming gas supply pressure to unit between 6"-14" water column inches or 1/2 psig?		
Has the proper gas regulator been installed for pressure and volume?		
Is the unit properly vented to allow adequate air flow?		
Are the propane tanks large enough, according to the rating of the unit, to prevent freezing?		
Have gas lines been checked for gas leaks?		
Have all operators using this unit been instructed properly and have they read the manual?		
Has the unit been installed according to operator's manual instructions?		

**CAUTION:** If "NO" has been checked on any of the above questions, do not operate the unit.

### FOR YOUR SAFETY READ BEFORE LIGHTING

#### WARNING

If you do not follow these instructions exactly, a fire or explosion may result causing property damage, personal injury or loss of life.

A. This appliance has an electronic ignition system. When lighting the pilot, follow these instructions exactly.

B. BEFORE LIGHTING smell all around the appliance area for gas. Be sure to smell next to the floor because some gas is heavier than air and will settle on the floor.

#### FOR YOUR SAFETY

#### "WHAT TO DO IF YOU SMELL GAS"

- Do not try to light any appliance.
- Do not touch any electrical switch, do not use any phone in your building.
- Immediately call your gas supplier from a neighbor's phone. Follow the gas supplier's instructions.
- If you cannot reach your gas supplier, call the fire department.

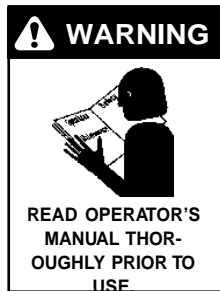
C. Use only your hand to turn the gas control. Never use tools. If the knob will not push in or turn by hand, don't try to repair it; call a qualified service technician. Forced or attempted repair may result in a fire or explosion.

D. Do not use this appliance if any part has been under water. Immediately call a qualified service technician to inspect the appliance and to replace any part of the control system and any gas control which has been under water.



**CAUTION:** This machine is equipped with an electronic ignition system. Lighting of the pilot is accomplished through electronic spark ignition. Do not attempt to light the appliance manually as a burn injury or electrical shock may result.

## OPERATING INSTRUCTIONS



1. **STOP!** Read operator's manual before operating this machine. Failure to read operation and warning instructions may result in personal injury or property damage.
2. Turn all switches off.
3. Review installation instructions.
4. Connect water supply hose to the inlet connector and turn water on. Check for water leaks and tighten as needed.
5. Turn on the main gas supply and turn the gas valve control knob into the "ON" position (see page 9).
6. Close the steam knob and chemical valve by turning clock wise and setting the temperature control knob between 200° - 225°.
7. Attach the desired high pressure nozzle into the wand quick coupler by pulling the coupler collar back and inserting the nozzle. Secure nozzle by pushing the coupler collar forward.
8. Turn the pump switch on and pull the trigger on the spray gun to activate the pressure switch which will then start the machine. When spray gun is closed more than one (1) minute, a time delay feature will turn the machine off.
9. For hot water, push the burner switch to the ON position and pull the trigger on the spray gun. Sparking begins, pilot gas ignites and then the ignitor/sensor will turn the main burner on. Optional remote control requires the pump switch to be turned ON before the burner and chemical switches will turn on.
10. To apply detergent, open the chemical valve counter clockwise making sure that the chemical pick up tube is in the chemical solution and not sucking air. On optional remotes the chemical switch needs to be turned to the OFF position then turned to the ON position to activate the chemical solenoid.
11. **To Stop:** Turn the burner switch off and place the chemical pick-up tube into fresh water. Open the chemical valve and trigger gun allowing chemical lines to be flushed and the burner to cool. Otherwise, coil damage will result.
12. When steam is needed, remove the side panel and turn the steam knob counterclockwise. Then turn the temperature adjustment knob to 275°
13. After water has cooled, turn pump switch to OFF position. If the machine is going to be off for an extended period of time, put the manual valve on the gas valve into the OFF position.
14. Turn the water off. Protect from freezing.

## PREVENTATIVE MAINTENANCE

1. Check to see that the water pump is properly lubricated.
2. Follow winterizing instructions to prevent freeze damage to the pump and coils.
3. Always neutralize and flush chemical from system after use.
4. If water is known to be high in mineral content, use a water softener in your water system or de-scale as needed.
5. Do not allow acidic, caustic or abrasive fluids to be pumped through the system.
6. Always use high grade quality Landa cleaning products.
7. Never run pump dry for extended periods of time.
8. Periodically delime coils as per instructions.

It is advisable, periodically, to visually inspect the burner. Check air inlet to make sure it is not clogged or blocked. Wipe off any oil spills and keep this equipment **clean and dry**.

The areas around the Landa washer should be kept clean and free of combustible materials, gasoline and other flammable vapors and liquids.

The flow of combustion and ventilating air to the burner must not be blocked or obstructed in any manner.

## GENERAL OPERATING TECHNIQUES

If dirt comes off relatively easy and no grease and oil are present, cleaning with cold water will normally suffice. However, when grease and oil are present, hot water will greatly speed up the process.

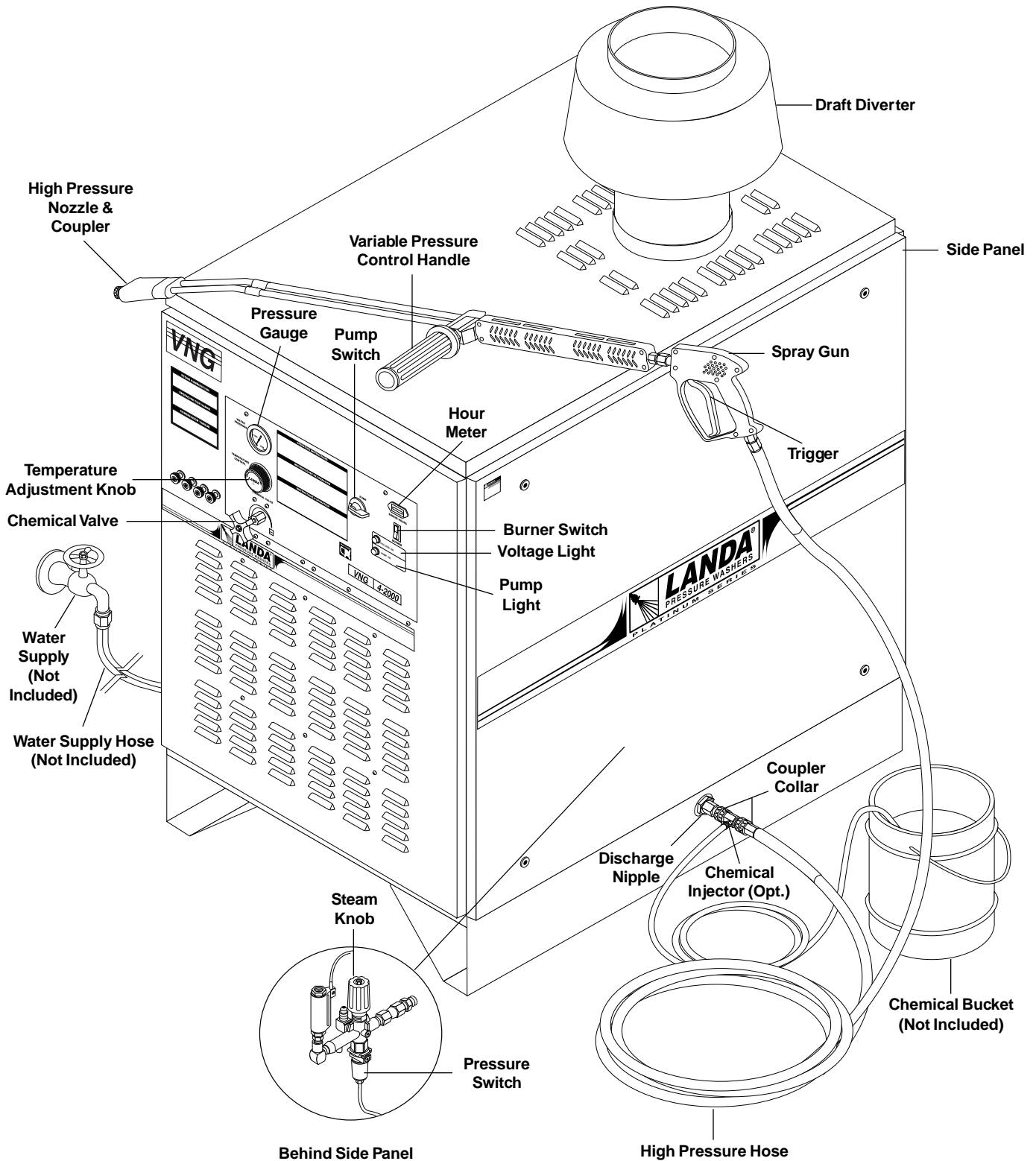
Clean with the spray nozzle a foot or so from the surface being cleaned. For more difficult cleaning, move the nozzle in closer.

If the unit is equipped with a shut-off gun and various nozzle patterns, use the wide patterns for easy soil removal jobs and the narrow patterns on the more difficult jobs or for tight areas such as cracks and holes.

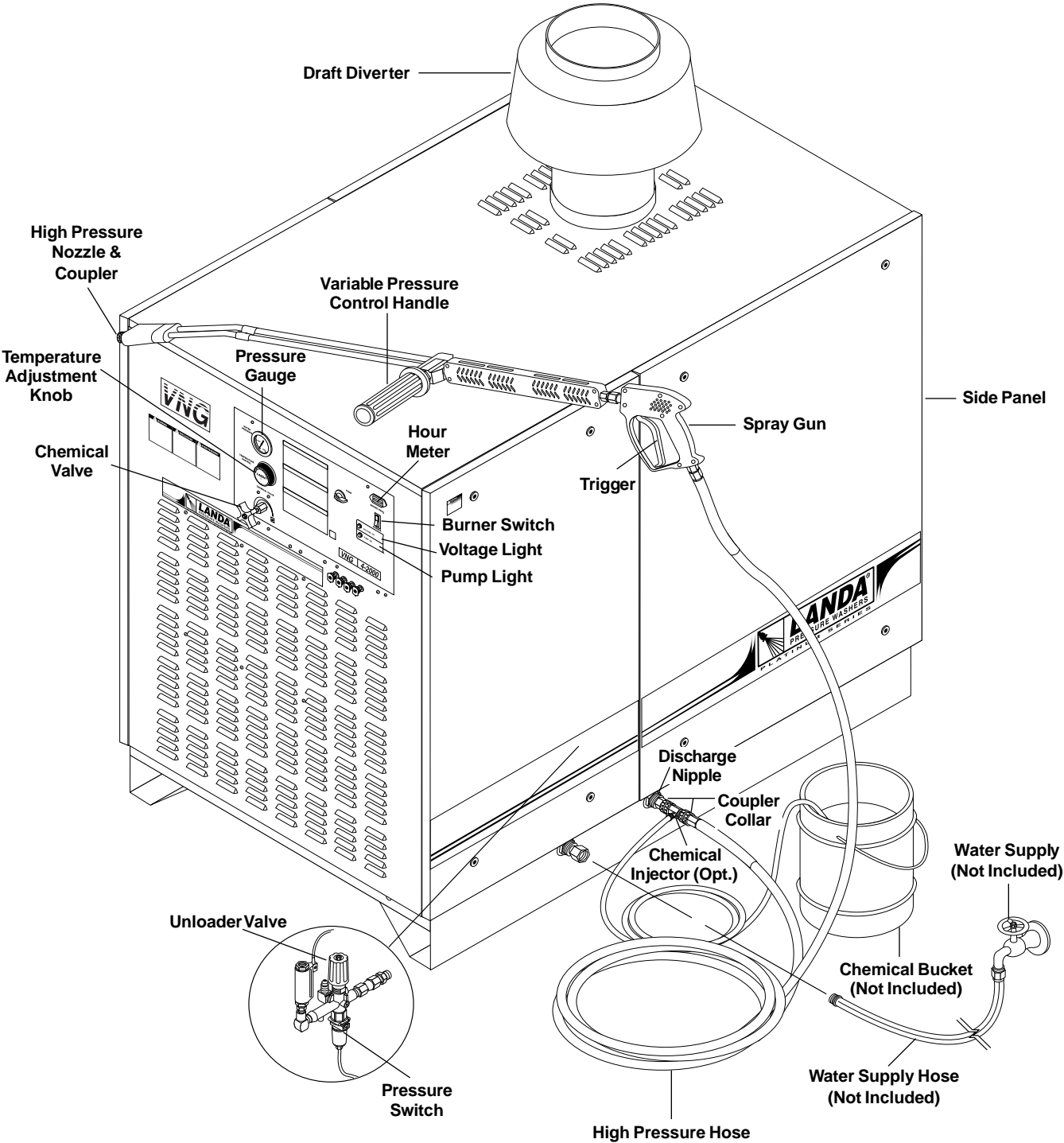
In most cases, faster results and better chemical economy will be obtained by applying the chemical and letting it "set" for a few minutes prior to rinsing. This enables the chemical to do its soil penetrating and loosening work.

Most cleaning work terminates with a high pressure rinse as part of the normal cleaning procedure. In some cases, however, the last operation may be application of a chemical or detergent (sanitizing, for example). After such work, run the unit for 20-30 seconds to clear pump and lines.

## VNG W/O REMOTE



**VNG-L W/O REMOTE**



## MAINTENANCE AND SERVICE

### Spray Nozzles

Each unit is equipped with one or more spray nozzles, depending on model. Different spray nozzles are calibrated for each machine depending on the flow and pressure of that particular model. Spray nozzles vary in bore size and angle of spray. Popular spray angles are 0°, 15°, 25°, 40°. When ordering, please specify size and angle of nozzle. Nozzle size for each machine is located on the serial plate.

### Unloader Valves:

Unloader valves relieve pressure in the line when a shut-off gun is closed. Unloader valves are preset and tested at the factory before shipping. Occasional adjustment of the unloader may be necessary to maintain correct pressure. (See section in manual on unloaders for correct procedure in adjusting valve.)

### Winterizing Procedure:

Damage due to freezing is not covered by warranty. Adhere to the following cold weather procedures whenever the washer must be stored or operated outdoors under freezing conditions.

During winter months, when temperatures drop below 32° F, protecting your machine against freezing is necessary. Siphoning a small amount of antifreeze into the system is recommended. This is done by pouring a 50:50 mix of antifreeze and water into the float tank and then siphoning 100% antifreeze through the chemical line with the pump on. If compressed air is available, an air fitting can be screwed into the float tank strainer fitting and by injecting compressed air, all water will be blown out of the system. The use of a draft diverter will prevent the wind chill factor from freezing the coil.

### Low Pressure Diagnosis (Units with shut-off gun)

Refer to the Trouble Shooting Chart for low pressure. If by referring to the chart, the trouble is found to be either the unloader or the pump, your next step is to determine whether, in fact, the unloader or the pump is the problem. This can be done by eliminating the unloader from the system and attaching a 50' charge hose directly to the pump. If high pressure is developed in this manner the pump is good, and the unloader needs to be repaired or replaced. If low pressure is still present the pump needs repairing. **CAUTION:** When using this procedure to test components, keep the shut-off gun open at all times.

### High Limit Hot Water Thermostat:

For safety, each unit is equipped with a high limit control switch. In the event the temperature of the water should exceed its operating temperature, the high limit control will turn the burner off until the water cools.

### Pumps:

Use only SAE 30 weight non-detergent oil. Change oil after first 50 hours of use. Thereafter, change oil every three months or at 500 hour intervals. Oil level should be checked through use of the dipstick found on the top of the pump or by the red dot visible through the oil gauge window. Oil should be maintained at that level.

## HEATING COIL

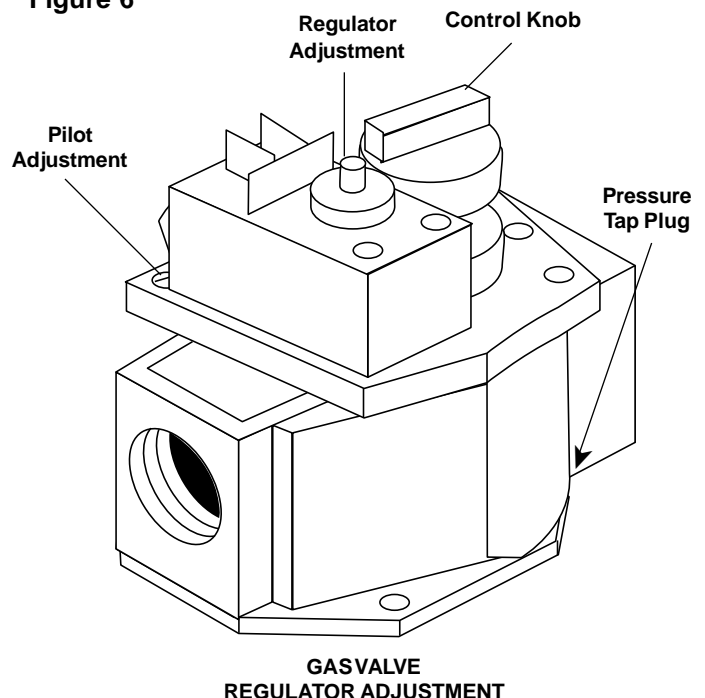
### Condensation from Heating Coil

When cold water is being pumped into the water heater coil, and the burner is on, condensation will form on the coil and drip down into the burner compartment, giving the appearance of a leaking coil, particularly on cold humid days.

### To Check Water Heater Coil for Leaks:

With the main burner "OFF" start machine and allow it to run a few minutes. Check into the burner compartment with a drop light or flashlight. If no leaks are visible, then water dripping from coil is from condensation.

Figure 6



### Deliming Coil:

Periodic coil deliming is recommended.

1. Fill a container with 4 gallons of water, then add 1 lb. of deliming powder. Mix thoroughly.
2. Remove nozzle from gun assembly and put gun into container.

3. Attach a short section (3-5 ft.) of garden hose to machine to siphon solution from an elevated container or add mixture to the float tank. Turn pump switch on allowing solution to be pumped through coil and back into the container. Solution should be allowed to circulate 2-4 hours.
4. After circulating solution flush entire system with fresh water. Reinstall nozzle in gun.

## GAS VALVE REGULATOR ADJUSTMENT

Adjustment of the built-in regulator isn't normally necessary, since it is preset at the factory. However, field adjustment may be accomplished as follows:

1. Attach manometer at pressure tap port.
2. Remove regulator adjustment screw cap.
3. With a small screwdriver, rotate the adjustment screw clockwise to increase or counterclockwise to decrease gas pressure.
4. Replace regulator adjustment screw cap (see Figure 6, page 11).

In alkaline water areas, lime deposits can accumulate rapidly inside the coil pipes. This growth is increased by the extreme heat build up in the coil. The best preventative for liming conditions is to use high quality cleaning chemicals. In areas where alkaline water is an extreme problem, periodic use of Landa Deliming Powder will remove lime and other deposits before coil becomes plugged. (See Deliming Instructions for use of Landa Deliming Powder.)

### Pressure Relief Valve

Each unit is equipped with a relief valve to relieve pressure in the system when higher than normally operating pressures are encountered. If operating pressure of unit is found to be normal and relief valve continues to leak, repair or replace the valve. **CAUTION:** Relief valve can become obstructed by deposits and must be unscrewed at least once per year to allow discharge.

## PROPANE GAS

### General Safety Precautions

Have a qualified gas service person assist in any gas burner installation or service. Few maintenance people or mechanics are knowledgeable in gas controls or related safety practices. Propane Gas is heavier than air; unburned Propane Gas will gravitate to the floor rather than rise out of the stack. Hence, adequate floor space and good ventilation are especially important with propane systems.

### Gas Pressure Requirements

All propane fired units operate on vapor propane fuel only. They are designed to operate at a pressure of 11" water column (between 1/3 and 1/2 of one psi), and are often operated at even higher pressures when extra heat is needed.

Exterior regulators are needed to control the system. Propane bottles are not included with the unit. A high pressure regulator should be installed on the propane bottle and a low pressure regulator attached to the pressure washer.

### Propane Cylinder Capacity

An important consideration with propane systems is the capacity of the supply cylinder relative to the needs of the burner. The burner operates on propane as a vapor gas. As gas is used from the propane cylinder, the liquid in the cylinder boils to maintain vapor gas pressure. This boiling process cools the liquid, and in a heavy, continuous-demand situation, the liquid temperature can fall to the point at which it cannot provide vapor gas as rapidly as is needed. In this case, it may be necessary to warm the Propane Cylinder by directing a warm spray, not over 120° F, on the cold cylinder or by manifolding two propane bottles together to increase total vaporization capacity. It is recommended that a minimum 100 lb. vapor propane bottle be used on the unit, depending on the length of running time desired.

## BURNER FEATURES

### Operated Automatic Valve

This machine is equipped with an Intermittent Pilot Ignition System. This System is designed to eliminate the need for a constant burning pilot. Lighting of the pilot is accomplished through electronic spark ignition each time the burner and flow switch call for heat. The pilot is not burning when there is no call for heat. Do not attempt to light the appliance manually as a burn injury or electrical shock may result. The pilot light will remain on and the main gas valve is turned off when the spray gun is closed.

### Care of Main Burner

Due to condensation from heater coils dripping down on the burners, a scale build-up may occur in the burner jet orifices.

1. **TO REMOVE BURNER MANIFOLD FROM WATER HEATER COIL:**

Turn off the gas to the main burner by turning the knob to the "OFF" position on the gas valve and the main gas supply.

Disconnect the pilot and ignition lines from the gas valve. Disconnect union in main burner line below thermostat. (Remove the nuts from the U-bolts, item 44 on page 20 on the VNG-S units.) Slide burner manifold out through shell opening.

## 2. TO CLEAN BURNER JETS:

Select proper size drill for type gas involved. Use pin vise to hold drill and ream out each jet orifice.

**CAUTION:** Do not ream out orifices to a larger size.

If the water heater will be exposed to freezing weather, an anti-freeze solution should be circulated through the coil by whatever means are available for the particular system the water heater is used on.

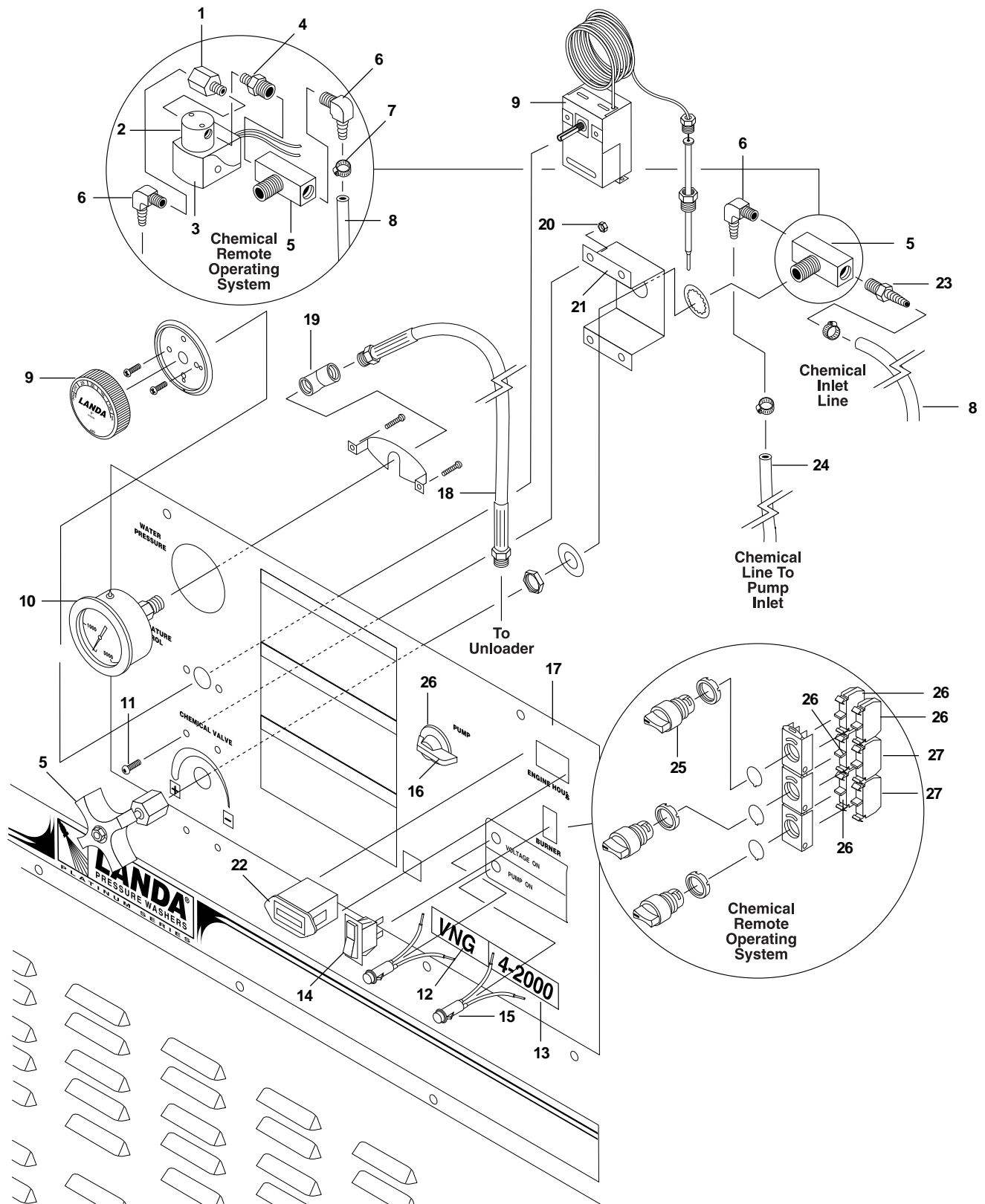
## To Adjust Pressure Regulator

Adjustment of the Pressure Regulator is not normally necessary since it is preset at the factory. However, field adjustment may be accomplished as follows:

1. Manometer attachment may be accomplished at the pressure tap plug.
2. Remove regulator adjustment screw cap (see Figure 6, page 15).
3. With small screwdriver, rotate adjustment screw "clockwise" to increase, or "counterclockwise" to decrease pressure.
4. Replace regulator adjustment screw.



## VNG CONTROL PANEL (All)

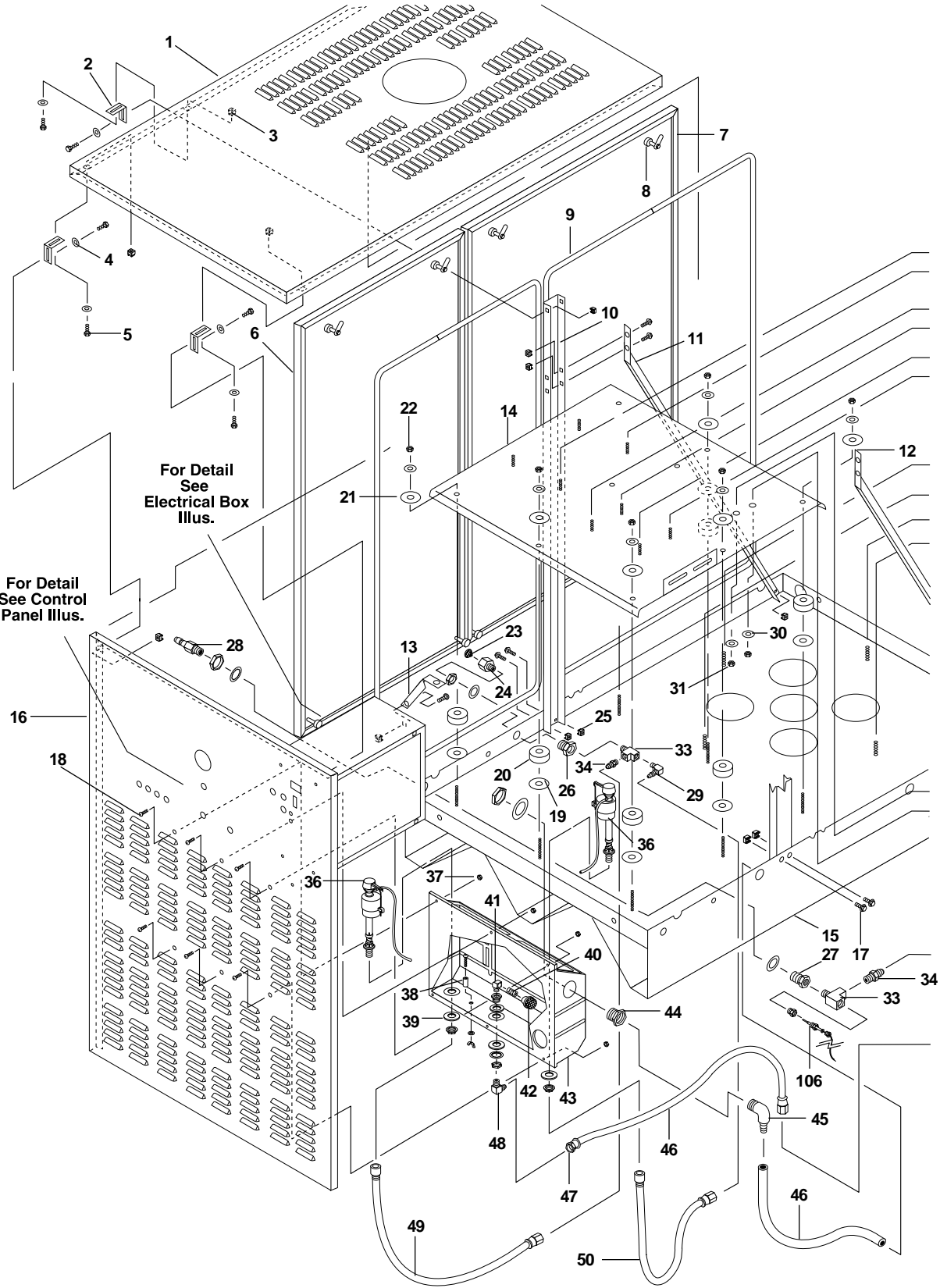


## VNG CONTROL PANEL (All) • PARTS LIST

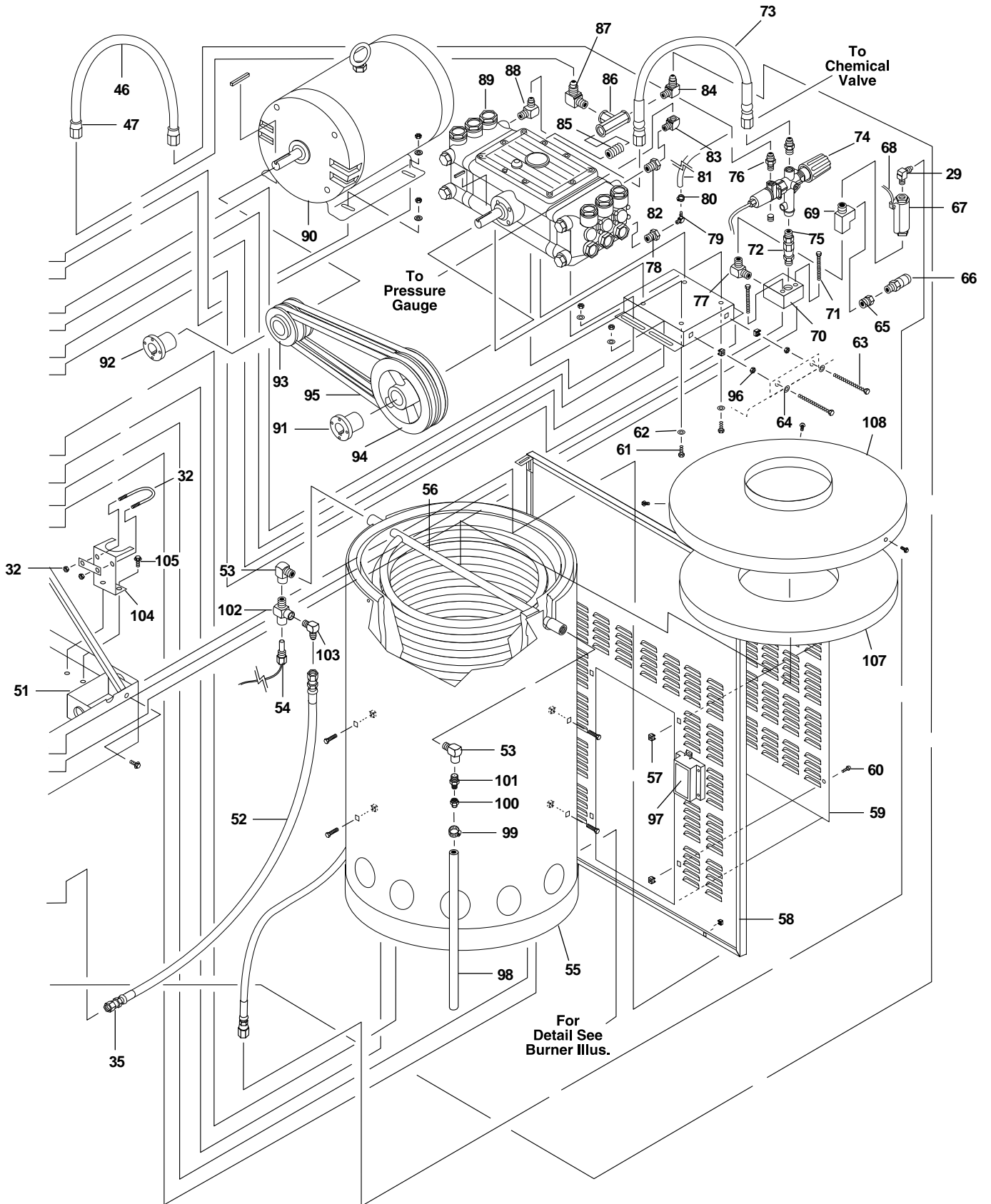
ITEM	PART NO.	DESCRIPTION	QTY	ITEM	PART NO.	DESCRIPTION	QTY
1	2-11031	Adapter,, 1/4" x 1/8" (Remote only)	1	13	95-07163012	Panel, Control, VNG-Large	1
2	6-140159	Valve, Chemical Solenoid, Less Coil (Remote Only)	1	14	6-020251	Switch, Curvette 120V & 220V	1
3	6-140160	Solenoid Coil, 120V (Remote Only)	1	15	6-02053	Light, Indicator, Red, 125V	2
4	2-1055	Nipple, 1/4" x 1/8" Pipe, (Remote Only)	1	16	6-021633	Switch, 2 Pos. GE, C-2000	1
5	2-3015	Valve/Control, Metering	2	17	10-99015	Label, VNG Control Panel	1
6	2-1089	Hose Barb, 1/4" Barb, x 1/4" Pipe, 90°(Remote Qty-2)	1		10-99031	Label, VNG Control Panel w/Remote	1
7	2-9000	Clamp, Screw, #4	6	18	4-02021216	Hose, 1/4" x 16", 100R2, Press Loop	1
8	4-02080000	Tube, 1/4" x 1/2", CLR Vinyl /ft. 12		19	2-0026	Elbow, 1/4" Female, Pipe	1
9	4-05088	Thermostat, General 302°	1	20	17-22282	Nut, 10/32" Keps	8
10	4-05035	Gauge, O-5000 PSI	1	21	95-07163038	Support, Metering Valve, VNG	2
11	901991	Screw, 10/32" x 1/2" BH Soc Blk	8	22	4-050822	Hour Meter, ENM, 115V AC	1
12	10-103110	▲ Label, 3-1100	1	23	2-1085	Hose Barb, 1/4" Barb x 1/4" ML Pipe	2
	10-1042000	▲ Label, 4-2000	1	24	4-02090000	Hose, 1/4" x 1/2", Braided Vinyl /ft. 6	
	10-1043000	▲ Label, 4-3000	1	25	6-021630	Switch, Sele GE C-2000, Remote	3
	10-2063000	▲ Label, 6-3000	1	26	6-02626	Block, Contact GE, C-200 NO	3
	10-2082500	▲ Label, 8-2500	1	27	6-021623	Block, Contact GE C-200 NC	3

▲ Not Shown

**VNG-L EXPLODED VIEW**  
**LEFT SIDE**



## VNG-L EXPLODED VIEW RIGHT SIDE



## VNG-L EXPLODED VIEW PARTS LIST

ITEM	PART NO.	DESCRIPTION	QTY
1	95-07163010	Panel, Top, VNG-L	1
2	95-07163034	L-Bracket, VNG	8
3	90-2022	Nut, Cage, 1/4" x 16 ga	19
4	90-40001	Washer, Flat, SAE,, Blk, Zinc	17
5	90-1001	Bolt, 1/4" x 3/4", NC HH	17
6	95-07163020	Panel, Side, Small, VNG-L	2
	10-99027	Label, VNG Stripe	2
7	95-07163018	Panel, Side, Large, VNG-L	2
	10-99028	Label, VNG, Landa/Stripe Right	1
	10-99029	Label, VNG, Landa/Stripe Left	1
	10-99016G	Label, VNG Logo	2
	10-990161G	Label, VLP Logo	2
8	90-50033	Latch, Vise Action	8
	95-07163082	▲ Hex Key, T-Handle	1
9	2-011041	Trim, 1/16", w/Sponge /ft.	55
10	95-07163022	Vertical Support, VNG-L	2
11	95-07163024	Brace, Left Side, VNG-L	1
12	95-07163026	Brace, Right Side, VNG-L	1
13	95-07163032	Brace, VNG Electrical Box	1
14	95-07163040	Power Platform, 8-2500	1
15	95-07163000	Base, VNG-L	1
16	95-07163012	Panel, Control, VNG-L	1
	10-99016	Label, VNG, Logo	1
	10-990161	Label, VLP, Logo	1
17	90-1996	Screw, 3/8" x 3/4" HH NC, Whiz Loc	14
18	90-1999	Screw, 10/32" x 3/4" BH SOC CS	6
19	2-0108	Bumper Pad	21
20	2-0104	Pad, Hard Rubber	7
21	9-50070	Washer, 3/8" x 1-1/2", Fender SAE	7
22	90-2002	Nut, 3/8", ESNA, NC	15
23	2-1902	Strainer, Inlet Garden Hose	1
24	2-10942	Swivel, 1/2" MP x 3/4" GHF w/Strainer	1
25	90-2019	Nut, Cage, 39" x 12 ga	12
26	2-11041	Connector, 1/2" Anchor	2
27	2-11039	Connector, 3/8" Anchor	1
28	2-20070	Nipple, 3/8" x 3/8" NPT ST Male	1
29	2-1060	Elbow, 1/2" JIC x 3/8", 90°	2

ITEM	PART NO.	DESCRIPTION	QTY
30	90-4001	Washer, 5/16", Flat, SAE	4
31	90-2006	Nut, 5/16", Hex, NC	2
32	90-10130	U-Bolt, 5/16" x 1" Pipe	1
33	2-1042	Tee, 1/2" Street	1
34	2-1053	Nipple, 1/2" JIC x 1/2" Pipe	2
35	4-02067736	Hose, 36" x 1/2", 100R2, Pres Loop	1
36	2-3014	Valve, Fluid Master 400A, Float	2
37	17-22282	Nut, 10/32" Keps	6
38	2-0151	Plug, Float Tank	1
39	90-4017	Washer, 1-3/16" x 2-1/4", STL RBR	2
40	2-1006	Nipple, 1/2" Close (restrictor)	1
41	2-1024	Elbow, 1/2" Street	1
42	2-1906	Strainer, 1/2" Basket	1
43	2-01164	Tank, Plastic Universal Float	1
44	2-010050	Bulkhead, 3/4"	1
45	2-0100379	Adapter, 3/4" x 3/4" MT x Insert	1
46	4-02120000	Hose, 3/4" Push-on /ft.	8
47	2-11050	Swivel, 3/4" JIC Fem Push-on	4
48	2-10630	Elbow, 3/4" JIC x 1/2", 90°	2
49	4-02100030	Inlet Hose, 30" Supply Water	1
50	4-02100045	Inlet Hose, 45" Supply Water	1
51	6-04110	Box, Junction, 3 Hole, 3/4"	1
	6-0411	Cover Plate, Junction Box	1
	6-0517	▲ Strain Relief, 3/4"	1
52	4-02067770	Hose 70" x 1/2", 100R2 Press Loop	1
53	2-0032	Elbow, 1/2", Street	2
54	4-05091	Switch, Snap 275 Hi-limit	1
55	95-07163083	Wrap Outer 30" ENG/VNG Large	1
	7-7002	Burner Assy, HWG-75, (8-2500)	1
56	95-07121222	Coil , Dura, 25" DIA. Sch 80 VNG L	1
57	90-2018	Nut, Cage, 10/32" x 16 ga	4
58	95-07163014	Panel, Burner End, VNG-L	1
59	95-071630106	Cover, Burner Access, VNG-L	1
60	90-1991	Screw, 10/32" x 1/2" BH SOC Blk	4
61	1-99369900	Screw	4

▲ Not Shown

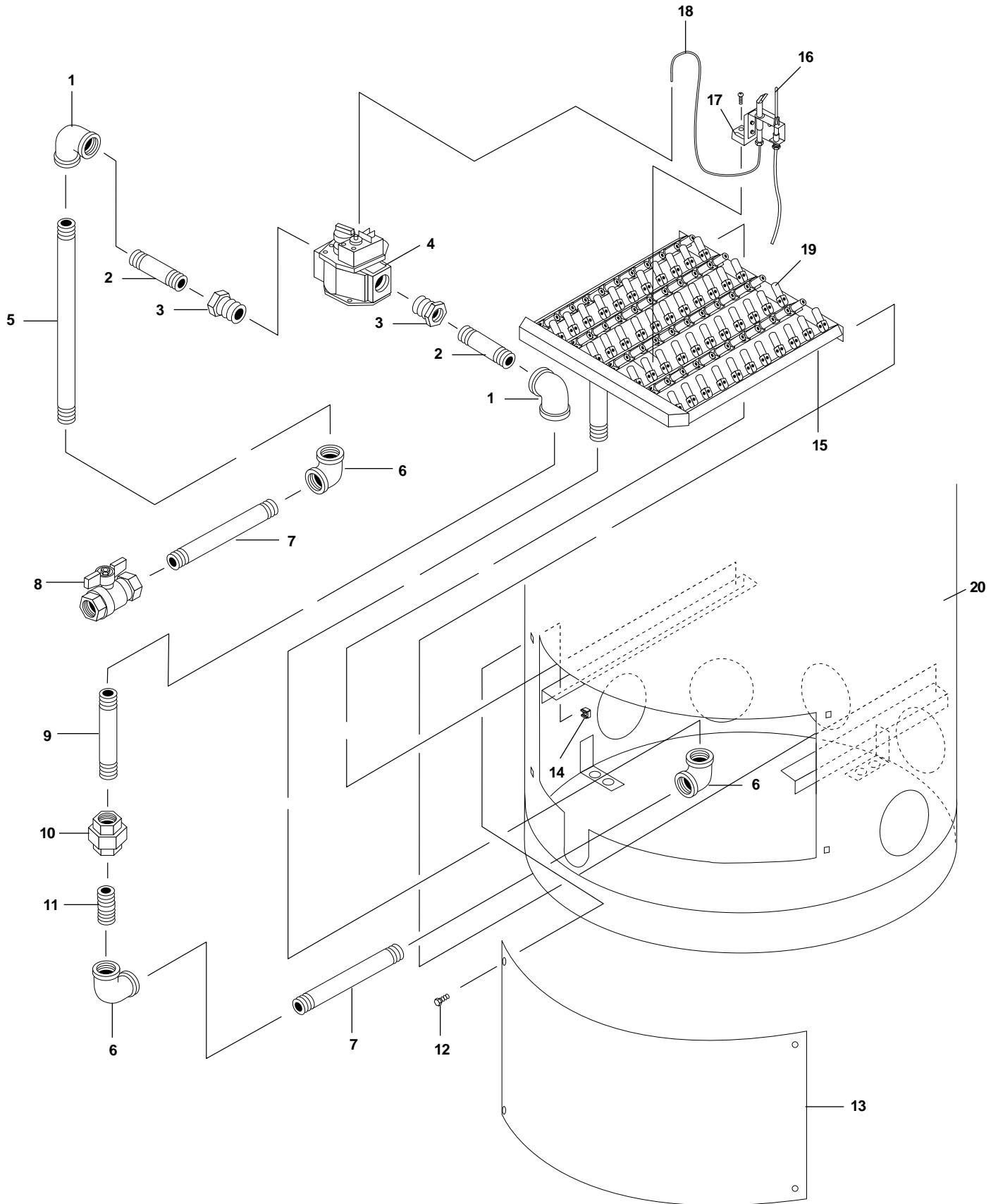
## VNG-L EXPLODED VIEW

### PARTS LIST (continued)

ITEM	PART NO.	DESCRIPTION	QTY	ITEM	PART NO.	DESCRIPTION	QTY
62	1-96710600	Washer	4	87	2-1062	Elbow, 1/2" JIC x 1/2" 90°	1
63	90-1025	Bolt, 3/8" x 5-1/2", NC HH Tap	2	88	2-0053	Elbow, 1/2" JIC, 3/8", Steel, 90°	1
64	90-4002	Washer, 3/8" x SAE, Flat	10	89	5-2309	Pump, General, T-1631 (8-2500)	1
65	2-1074	Bushing, 3/8" x 1/4" Pipe	1	90	5-1025	Motor, 15 HP 3 PH, 1725 RPM M2513T (6-3000, 8-2500)	1
66	81-22565	Valve, Pop-off, 3600 psi	1	91	5-522158	Bushing, P1 x 1-5/8" (6-3000, 8-2500)	1
67	6-02173	Switch, Flow, ST-5	1	92	5-512024	Bushing, H x 24 mm (6-3000)	1
68	6-02174	Switch, Reed, Replacement ST-5	1		5-512032	Bushing, H x 32 mm (8-2500)	1
69	2-1041	Tee, 3/8" Street	1	93	5-406040	Pulley, 2TB 40 (6-3000, 8-2500)	1
70	95-07101215	Bracket, Unloader, 1/2" x 1/2"	1	94	5-40505501	Pulley, 2BK 55 H (6-3000)	1
71	90-1011	Bolt, 5/16" x 2", NC HH	2		5-40508001	Pulley, 2BK 80 H (8-2500)	1
72	2-0079	Swivel, 1/2" JIC Fem x 3/8" Male	1	95	5-604046	Belt, BX 46 (6-3000)	2
73	4-02067728	Hose 28" x 1/2", 100R2 Press Loop	1		5-604051	Belt, BX 51 (8-2500)	2
74	5-3225	Unloader, Suttner, ST-261 w/Switch	1	96	90-2007	Nut, 3/8" Hex, NC	2
75	2-0051	Nipple, 1/2" JIC x 3/8" Pipe	1	97	7-70151	Ignition, Electronic,, Control	1
76	2-1051	Nipple, 1/2" JIC x 1/4" Pipe	1	98	4-02130050	Hose, 7/8" Push On, Conduit /ft	2
77	2-20027	Elbow, 3/8" Female, Pipe	1	99	2-9014	Clamp, Conduit, CL9	1
78	2-1076	Bushing, 1/2" x 1/4" Pipe	1	100	2-3450	Rupture Disk, 5000 PSI	1
	2-1076	Bushing, 1/2" x 1/4" Pipe	1	101	2-3400	Rupture Disk Holder	1
79	2-1089	Hose Barb, 1/4" Barb x 1/4" Pipe, 90°	1	102	2-0046	Tee, 1/2", Street	1
80	2-9000	Clamp, Screw #4	4	103	2-0054	Elbow, 1/2" Jic x 1/2" 90 DGR.	1
81	4-02090000	Hose, 1/4" x 1/2" Braided Vinyl /ft.	6	104	95-07163035	Bracket, Gas Line, Support VNG	1
82	2-1074	Bushing, 3/8" x 1/4" Pipe	1	105	90-300210	Screw, #14 x 1" Tek, Blk, Zinc	2
83	2-1022	Elbow, 1/4" Street	1	106	4-05088	Thermostat, General, 302 DGR	1
84	2-10620	Elbow, 3/4" JIC x 3/4", 90°	2	107	7-014834	Insulation, Tank Head, 30" ENG/VNG	1
85	2-1007	Nipple, 1/2" Hex	1	108	95-071630751	Top, Burner, Wrap, 30" ENG/VNG	1
86	2-1033	Tee, 3/4", Female Pipe	1				

▲ Not Shown

## VNG-L BURNER ASSEMBLY

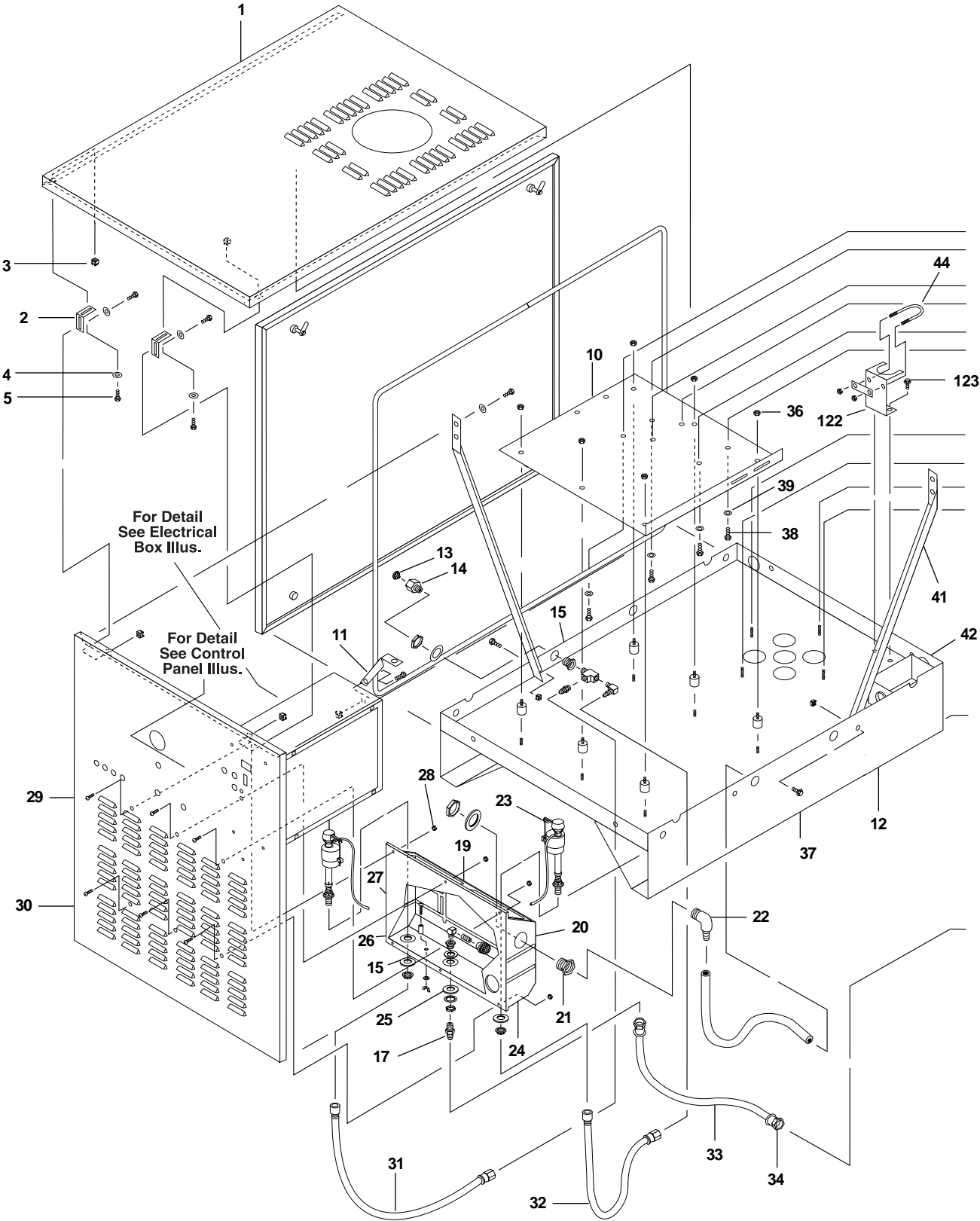


## VNG-L BURNER ASSEMBLY PARTS LIST

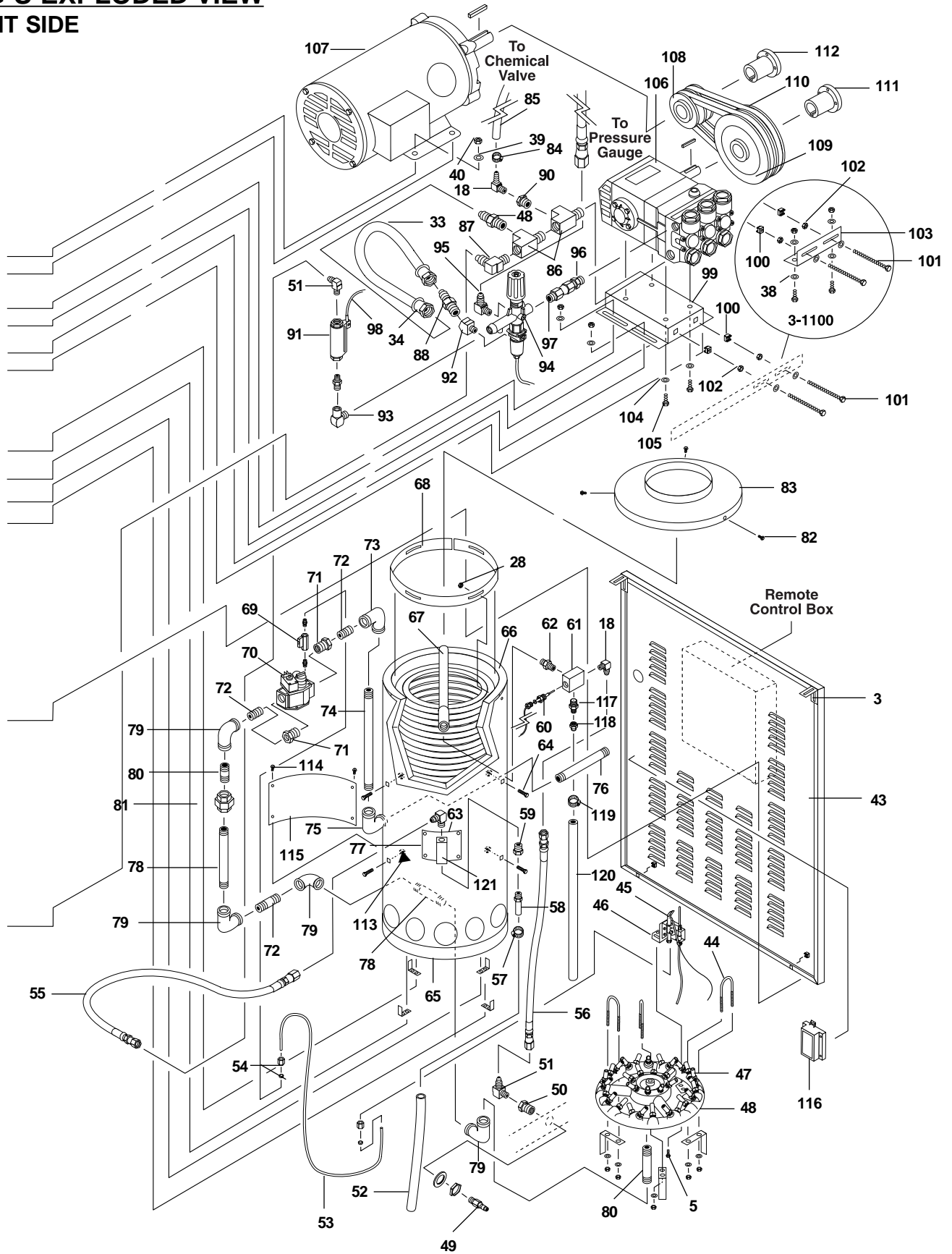
ITEM	PART NO.	DESCRIPTION	QTY	ITEM	PART NO.	DESCRIPTION	QTY
1	2-00295	Elbow, 1" x 3/4" Reducing, Blk	2	13	95-07163084	Door, Burner, Large, ENG/VNG	1
2	2-00162	Nipple 3/4" x 3", Black Pipe	2	14	90-19710	Nut, Cage, 1/4" x 12 GA	4
3	2-001359	Bushing, 1" x 3/4" Black Steel Hex	2	15	95-07162069	Burner Square, Assy Landa Less Jets	1
4	7-70002	Valve, , Gas, 7000 DERHC	1	16	7-70236	Pilot, Natural Gas Electronic	1
5	95-07163077	Pipe, 1" NPT x 18 Blk Sch.40	1	17	95-07163085	Splash Guard, Pilot Light ENG/VNG	1
6	2-00291	Elbow, 1", Black Pipe, 90°	3	18	7-0150	Tubing, Aluminum 1/4" /per in	36
7	2-00139	Nipple, 1" x 8" Black Pipe	2	18	4-02067736	Hose 36" X 1/2", 100R2, Pres Loop	1
8	7-7012	Valve, Gas Shut-Off 1" NPT	1	19	7-7022	Jet, Oriface #69 Drill out to #54	99
9	95-07163078	Pipe, 1" NPT x 11", Black Pipe, Sch.40	1	20	95-07163083	Wrap, Outer, 30" ENG/VNG Large Coil	1
10	2-0086	Union, 1", Black Pipe	1				
11	2-00171	Nipple, 1" , Close, Black Pipe	1				
12	90-19710	Screw, 1/4" x 3/4" HH NC, Whiz Loc	4				



**VNG-S EXPLODED VIEW**  
LEFT SIDE



## VNG-S EXPLODED VIEW RIGHT SIDE



## VNG-S EXPLODED VIEW PARTS LIST

ITEM	PART NO.	DESCRIPTION	QTY	ITEM	PART NO.	DESCRIPTION	QTY
1	95-07163056	Panel, Top VNG-S	1	25	90-4017	Washer 1-3/16" x 2-1/4", STL RBR (3-1100 0 Qty 1; 4-2000, 3000 - Qty 2)	
2	95-04163034	L-Bracket, VNG	4	26	2-1024	Elbow, 1/2" Street	1
3	90-2022	Nut, Cage, 1/4" x 16 ga	16	27	2-0151	Plug, Float Tank	1
4	90-40001	Washer, 1/4", Flat, SAE, Blk, Zinc	16	28	17-22282	Nut, 10/32" Keps	12
5	90-1001	Bolt, 1/4" x 3/4", NC HH	18	29	90-1999	Screw, 10/32" x 3/4" BH SOC CS	3
6	95-07163062	Panel, Side, VNG-S	2	30	95-07163058	Panel, Control, VNG-S	1
	10-99016G	▲ Label, VNG Logo	2	31	4-02100030	Inlet Hose, 30" Supply Water, (All models)	1
	10-990161G	▲ Label, VLP Logo	2	32	4-02100045	Inlet Hose, 45" Supply Water (4-2000, 3000)	1
	10-99028	▲ Label, Landa Stripe Right	1	33	4-02110000	Hose, 1/2" Push-On /ft.	3
	10-99029	▲ Label, Landa Stripe Left	1	34	2-1105	Swivel, 1/2" JIC Fem, Push-on	4
7	90-50033	Latch, Vise Action	4	35	2-0101	Isolator, 5/16", Vibration	6
	95-07163082	▲ Hex Key, T-Handle	1	36	90-2001	Nut, 5/16", ESNA, NC	6
8	2-011041	Trim, 1/16", w/sponge /ft.	28	37	90-1996	Screw, 3/8" x 3/4" HH NC, WHIC LOC	2
9	95-07163064	Brace, Left Side, VNG-S	1	38	90-1016	Bolt, 3/8" x 1", NC HH	8
10	95-07121013	Platform, Motor (3-1100)	1	39	90-4002	Washer, 3/8" SAE, Flat	18
	95-071210136	Platform, Motor, 3/16" (4-2000, 3000)	1	40	90-2002	Nut, 3/8", ESNA, NC	8
11	95-07163032	Brace, Electrical Box, VNG	1	41	95-07163066	Brace, Right side, VNG-S	1
12	95-07163052	Base, VNG-S	1	42	6-0411	▲ Cover, Plate, Junction Box	1
	10-99016	▲ Label, VNG Logo	1		6-04110	Box, Junction, 3 Hole, 3/4"	1
	10-990161	▲ Label, VLP Logo	1		6-0517	▲ Strain Relief, 3/4"	1
13	2-1902	Strainer, Inlet Garden Hose	1	43	95-07163060	Panel, Burner End, VNG-S	1
14	2-100942	Swivel, 1/2" MP x 3/4" GHF w/Strainer	1		10-02023	▲ Label, LP	1
15	2-11041	Connector, 1/2", Anchor	2		10-02024	▲ Label, NG	1
16	2-1042	Tee, 1/2" Street	2	44	90-10130	U-Bolt, 5/16" x 1", Pipe	3
17	2-1053	Nipple, 1/2" JIC x 1/2" Pipe (4-3000 restrictor)	4	45	7-70236	Pilot Electronic Ignition	1
18	2-0054	Elbow, 1/2" JIC x 1/2", 90°	5	46	95-07162025	Bracket, Pilot Light	1
19	2-100601	Modified Close Nipple, 1/2" NPT 5/16" (3-1100 restrictor)	1		90-25	Screw, 10/32" x 1/4", Slot Rnd MS ZN	2
	2-10070	Nipple, 1/2" Hex (4-2000 restrictor)	1	47	7-7022	Jet, Orifice, 638-69 (see Specification Page for drill out specs)	44
20	2-1908	Strainer, 1/2" General, Inline	1	48	7-7011	Burner Ring, x-44	1
21	2-010050	Bulkhead, 3/4"	1	49	2-2007	Nipple, 3/8" x 3/8" NPT ST Mal	1
22	2-0100379	Adapter, 3/4" x 3/4" MT x Insert	1	50	2-11039	Connector, 3/8" Anchor	1
	4-02120000	▲ Hose, 3/4' Push-on /ft.	3			▲ Not Shown	
23	2-3014	Valve, Fluidmaster, 400A Float (3-1100 - Qty 1; 4-2000, 3000 - Qty 2)					
24	2-0114	Tank, Plastic Universal, Float	1				

## VNG-S EXPLODED VIEW

### PARTS LIST (continued)

ITEM	PART NO.	DESCRIPTION	QTY	ITEM	PART NO.	DESCRIPTION	QTY
51	2-1060	Elbow, 1/2" JIC x 3/8", 90°	2	77	90-2999	▲ Screw, #10 x 1/2" Tek HH	4
52	4-02120000	Hose, 3/4" Push-on /ft.	2	78	2-00164	Nipple, 3/4" x 6", Blk Pipe	2
53	7-0150	Tubing, Aluminum, 1/4" Dead Soft /inch	36	79	2-00293	Elbow, 3/4" Blk	3
54	2-1118	Connector, 1/4" Tubing x 1/4" MPT	2	80	2-00162	Nipple, 3/4" x 3", Blk Pipe	2
55	4-02037725	Hose, 25" x 3/8", 100R1, Pres Loop (3-1100)	1	81	2-0087	Union, 3/4" Blk Pipe	1
	4-02047725	Hose, 25" x 3/8", 100R2, Pres Loop (4-2000, 3000)	1	82	90-300210	Screw, #14 x 1", Tek	3
56	4-02047736	Hose, 36", 3/8", 100R2, Pres Loop (All models)	1	83	95-07163075	Top, Burner Wrap, 18", VNG-S	1
57	2-9004	Clamp, Screw, #12	1	84	2-9000	Clamp, Screw, #4	6
58	81-22550	Valve, Pop-Off, 1200 psi (3-1100)	1	85	4-02090000	Hose, 1/4" x 1/2", Braided /ft.	6
	81-22560	Valve, Pop-Off, 2400 psi (4-2000)	1	86	2-1042	Tee 1/2" Street	2
	81-22565	Valve, Pop-Off, 3600 psi (4-3000)	1	87	2-1062	Elbow, 1/2" JIC x 1/2" 90°	1
59	2-1076	Bushing, 1/2" x 1/4" Pipe	2	88	2-1053	Nipple, 1/2" JIC x 1/2" Pipe	1
60	4-05088	Thermostat, General 302°	1	89	2-1051	Nipple, 1/2" JIC x 1/4" Pipe	1
61	95-07101226	Block, Discharge, Brass 1/2"x1/2"	1	90	2-1076	Bushing, 1/2" x 1/4" Pipe	1
62	2-0008	Nipple, 1/2" Hex, Steel	1	91	6-02173	Switch, Flow ST-5	1
63	2-0010	▲ Nipple, 1/2" x 4", Galv	1	92	2-10260	Elbow, 45°, 1/4" Street	1
64	90-1994	Screw, 10/32" x 1-1/4", RH, SL Blk	8	93	2-00270	Elbow, 3/8" Male Pipe	1
65	95-07163073	Coil Wrap, 18", VNG-S	1	94	5-3225	Unloader, Suttner ST-261 w/switch	1
	10-99077	▲ Label, VNG Burner Instructions	1	95	2-1060	Elbow, 1/2" JIC x 3/8", 90°	1
66	10-99032	▲ Label, Pilot Light Hole, VNG	1	96	2-0051	Nipple, 1/2" JIC, 3/8" Pipe	1
	7-0142	Insulation Blanket, w/Foil /sq. ft.	10	97	2-0079	Switch, 1/2" JIC Fem, 3/8" Male	1
67	95-07121213V	VNG-S Coil	1	98	6-02174	Switch, Reed, Replacement	1
68	95-07101241V	Insulation Retainer Band, VNG-S	2	99	95-07121113	Rail, Pump Combo	1
69	2-3006	Valve, 1/4", Jomar T-91LPL, Ball	1	100	90-2019	Nut, Cage, 3/8" x 12 ga	2
70	7-70002	Valve, Gas, 24V, 1" x 1", Electronic Ignition	1	101	90-10220	Bolt, 3/8" x 3-1/2", Tap	1
71	2-001359	Bushing, 1"x 3/4", Blk Steel, Hex	2	102	90-2007	Nut, 3/8", Hex, NC	2
72	2-00163	Nipple, 3/4" x 2", Blk	3	103	95-07141110	Retainer, Pump Take-up, Plated (3-1100)	1
73	2-00295	Elbow, 1" x 3/4", Reducing Blk	1	104	1-96701600	Washer (All models)	4
74	95-07163077	Pipe, 1" NPT 18", Blk, Sch. 40	1	105	1-99303700	Screw (3-1100)	4
75	2-00291	Elbow, 1" Blk Pipe	1	105	1-99364400	Screw (4-2000, 3000)	4
76	2-00132	Nipple, 1" x 6", Blk Pipe	1	106	5-2302	Pump, General, T-991 (3-1100)	1
77	95-07121113	Insulation Retainer Plate	1		5-2304	Pump, General, T-1011 (4-2000)	1
	7-0144	▲ Gasket, Retainer Plate	1		5-2305	Pump, General, T-2011 (4-3000)	1
				107	5-1043	Motor, 2 HP, 1 PH, 3450 35K23Y685 (3-1100)	1
					5-1040	Motor, 6 HP, 1 PH, 1725 (4-2000, 230 1 PH)	1
						▲ Not Shown	

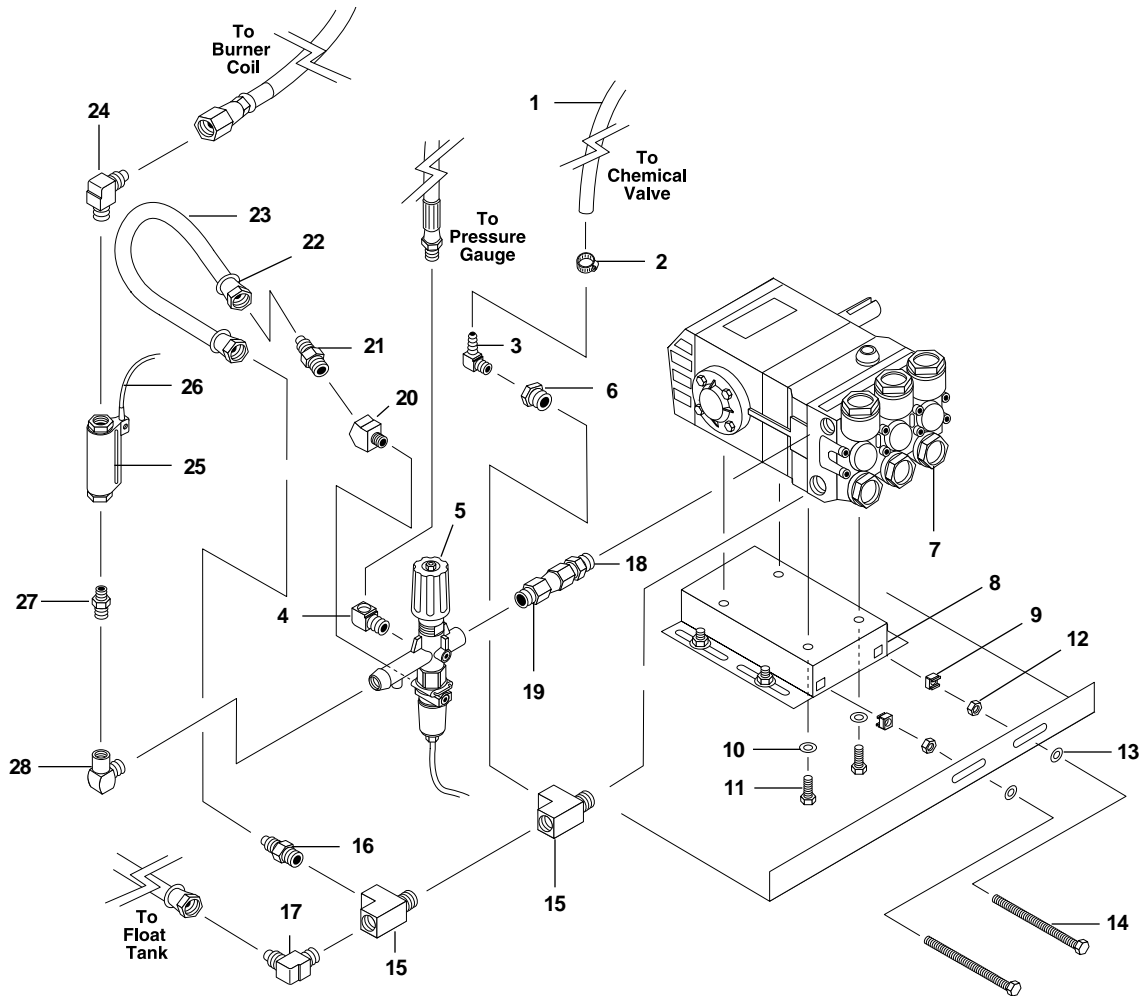
## VNG-S EXPLODED VIEW

### PARTS LIST (continued)

ITEM	PART NO.	DESCRIPTION	QTY
107	5-1011	Motor, 5 HP, 3 PH, 1725, M3218T (4-2000B, C, 230V & 460V 3 PH)	1
	5-1027	Motor, 5 HP, 3 PH, 1725 M3218T-S (4-2000F, 575V)	1
	5-1013	Motor, 7.5 HP, 1 PH, 1725, L1510T (4-3000A, 230V, 1 PH)	1
	5-10145	Motor, 7.5 HP, 3 PH, 1725, M3311T (4-3000B, C, 230V, 3 PH)	1
	5-10146	Motor, 7.5 HP, 3 PH, 1725, M3311T-S (4-3000F, 575V)	1
108	5-40102858	Pulley, Bore, AK 28 x 5/8" (3-1100)	1
	5-40205101	Pulley, 2 AK 51 H (4-2000)	1
	5-40504501	Pulley, 2 BK 45 H (4-3000)	1
109	5-40108401	Pulley AK 84 H (3-1100)	1
	5-40208401	Pulley, 2 AK 84 H (4-2000)	1
	5-40508001	Pulley, 2 BK 80 H (4-3000)	1
110	5-601035	Belt, A-35 (3-1100)	1
	5-602036	Belt, AX 36 (4-2000)	2
	5-604036	Belt, BX 36 (4-3000)	2
111	5-512024	Bushing, H x 24 mm	1
112	5-511113	Bushing, H x 1-1/8" (4-2000)	1
	5-511138	Bushing, H x 1-3/8" (4-3000)	1
113	90-2018	Nut, Cage, 10/32" x 16 ga	2
114	2-0133	Screw, 10/32" x 1/2", Knob	2
115	95-07163076	Door, Burner, VNG-S	1
116	7-70151	Ignition, Elec Control	1
117	2-3400	Holder, Rupture Disk	1
118	2-3450	Rupture Disk 5000 PSI	1
119	2-9004	Clamp, Screw #12	1
120	4-02130050	Hose, 7/8", Push-on, Conduit /ft	2
121	2-0046	Tee, 1/2", Street	1
122	95-07163035	Bracket, Gasline Support VNG	1
123	90-300210	Screw, #14 x 1" Tex, Blk, Zinc	2

▲ Not Shown

## VNG6-3000 PUMP ASSEMBLY

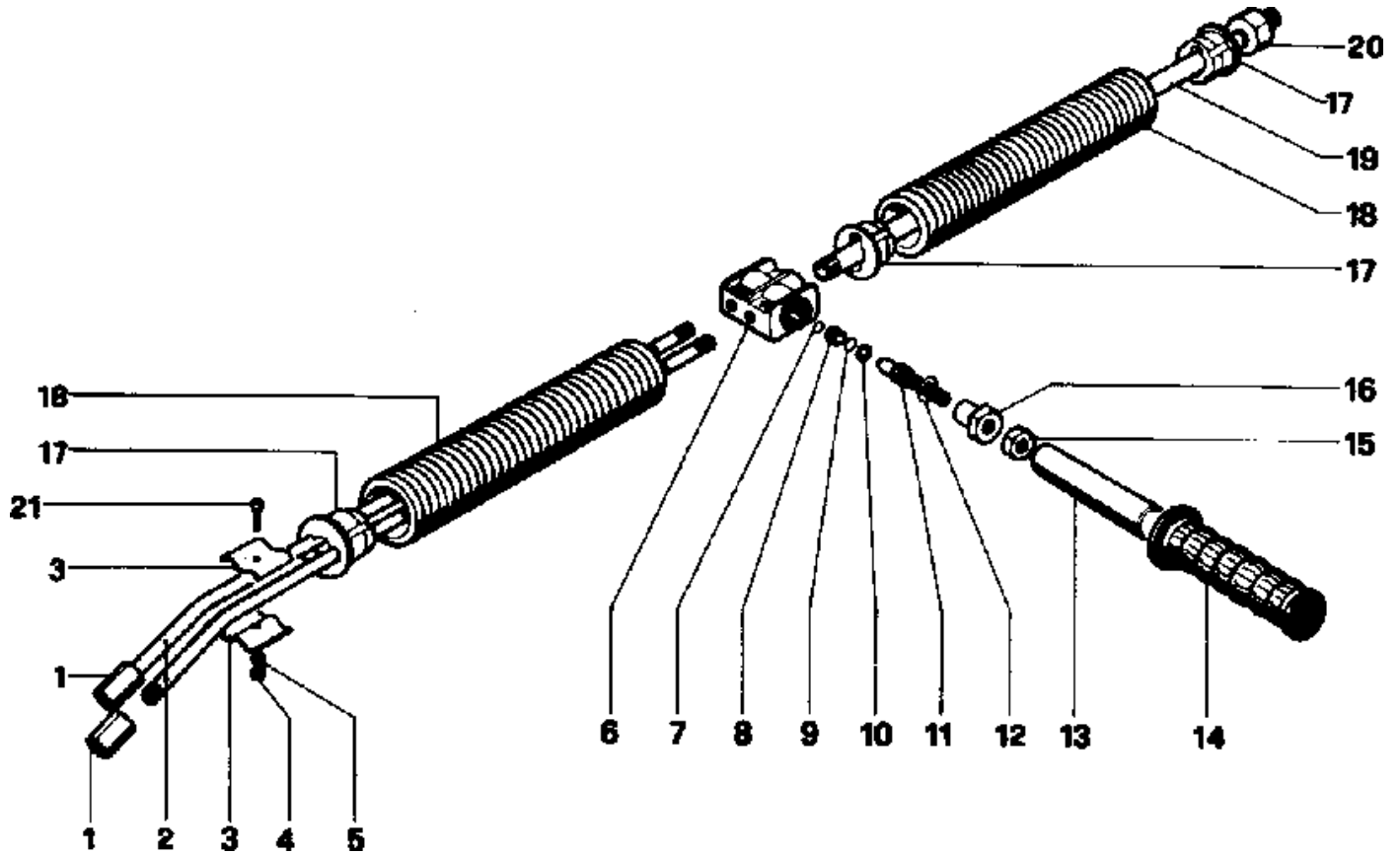


ITEM	PART NO.	DESCRIPTION	QTY
1	4-02090000	Hose, 1/4"x1/2" Braided Vinyl /ft. 6	
2	2-9000	Clamp, Screw, #4	4
3	2-1089	Hose Barb, 1/4" Barb x 1/4", Pipe, 90°	1
4	2-1022	Elbow, 1/4" Street	1
5	5-3225	Unloader, Suttner, ST-261w/Switch	1
6	2-1076	Bushing, 1/2" x 1/4" Pipe	1
7	5-2306	Pump, General, TS-2021-L	1
8	95-07121112	Rail, Pump, Combo	1
9	90-2019	Nut, Cage, 3/8" x 12 ga	2
10	1-96710600	Washer	4
11	1-99364400	Screw	4
12	90-2007	Nut, 3/8", Hex, NC	2
13	90-4002	Washer, 3/8", SAE, Flat	2

ITEM	PART NO.	DESCRIPTION	QTY
14	90-1025	Bolt, 3/8" x 5-1/2", NC, HH Tap	2
15	2-1042	Tee, 1/2" Street	2
16	2-1053	Nipple 1/2" JIC x 1/2" Pipe	1
17	2-10630	Elbow, 3/4" JIC x 1/2", 90°	2
18	2-0051	Nipple, 1/2" JIC x 3/8" Pipe	1
19	2-0079	Bushing, 3/4" x 1/4" Pipe	1
20	2-10260	Elbow, 45°, 1/4" Street	1
21	2-1051	Nipple 1/2" JIC x 1/4" Pipe	1
22	2-1105	Swivel, 1/2" JIC, Female Push-on	2
23	4-02110000	Hose, 1/2" Push-on /ft. 1.5	
24	2-1060	Elbow, 1/2" JIC x 3/8", 90°	1
25	6-02173	Switch, Flow, ST-5	1
26	6-02174	Switch, Reed, Replacement	1
27	2-2007	Nipple, 3/8", MPT	1
28	2-00270	Elbow, 3/8", Male, Pipe	1

## VARIABLE PRESSURE WAND #4-011142A

VNG3-1100 • VNG4-2000

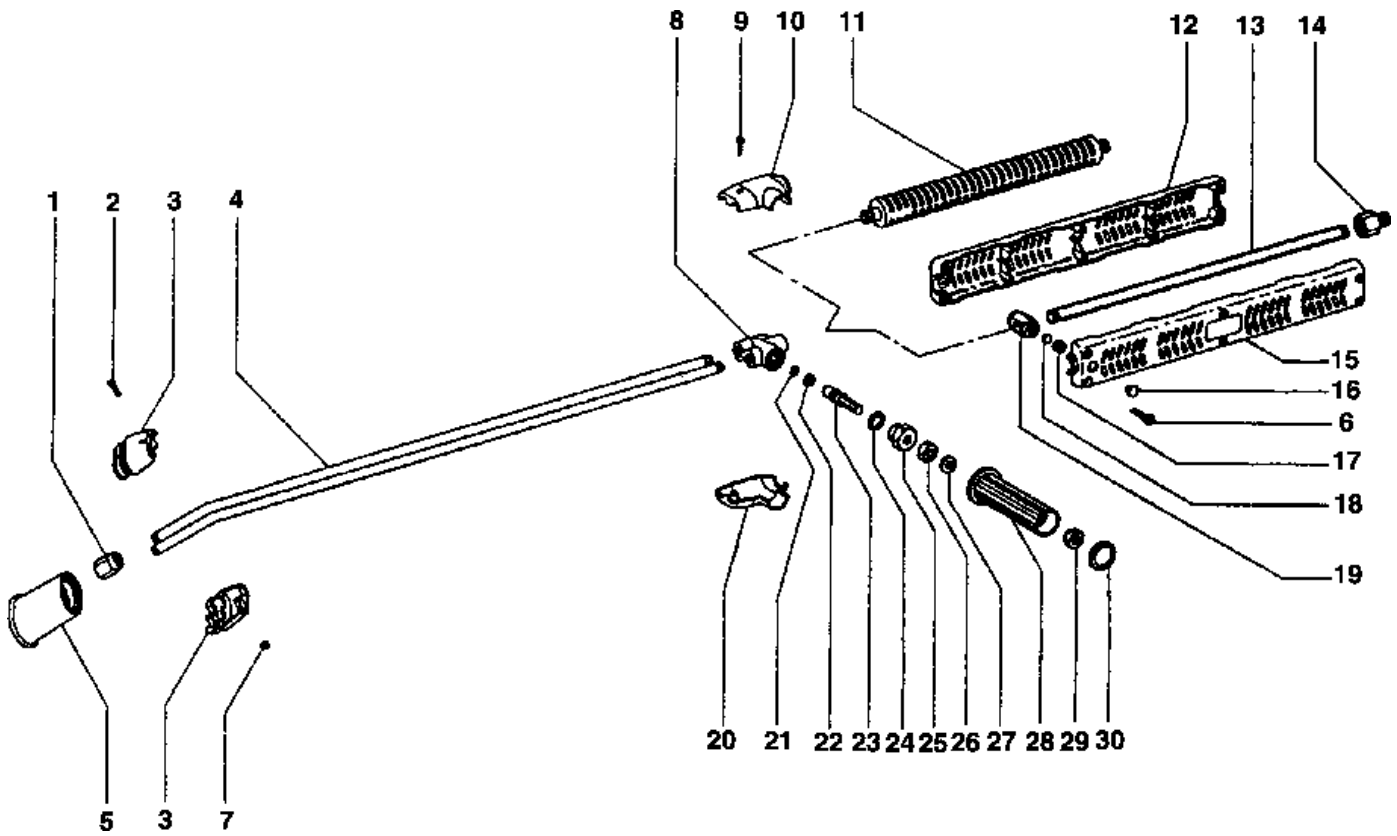


ITEM	PART NO.	DESCRIPTION	QTY
1	1-94481200	Nipple	1
	1-94513000	Nipple	1
2	1-18007289	Tube	2
3	1-18008134	Separator	2
4	1-92197500	Nut	1
5	1-96688000	Washer	1
6	1-10007141	Faucet	1
7	1-90357500	‡ O-Ring	1
8	1-10008566	‡ Valve Seat	1
9	1-90357700	‡ O-Ring	1
10	1-90503300	‡ Anti-extrusion Ring	1
11	1-10007366	‡ Sutter	1

ITEM	PART NO.	DESCRIPTION	QTY
12	1-90383500	‡ O-Ring	1
13	1-10007961	Handle Core	1
14	1-94557000	Handle	1
15	1-92237500	Nut	1
16	1-10007270	Nipple	1
17	1-18008251	Tube Spacer	4
18	1-18007951	Guard	2
19	1-18203389	Tube	1
20	1-94483200	Nipple	1
21	1-99156700	Screw	1
22	2-1013	Coupling, Hex, 1/8"	1
	<b>1-VPKIT</b>	<b>‡ Repair Kit (contains items 7, 8, 9, 10, 11, 12)</b>	

## VARIABLE PRESSURE WAND #4-011143A

VNG4-3000 • VNG6-3000 • VNG8-2500



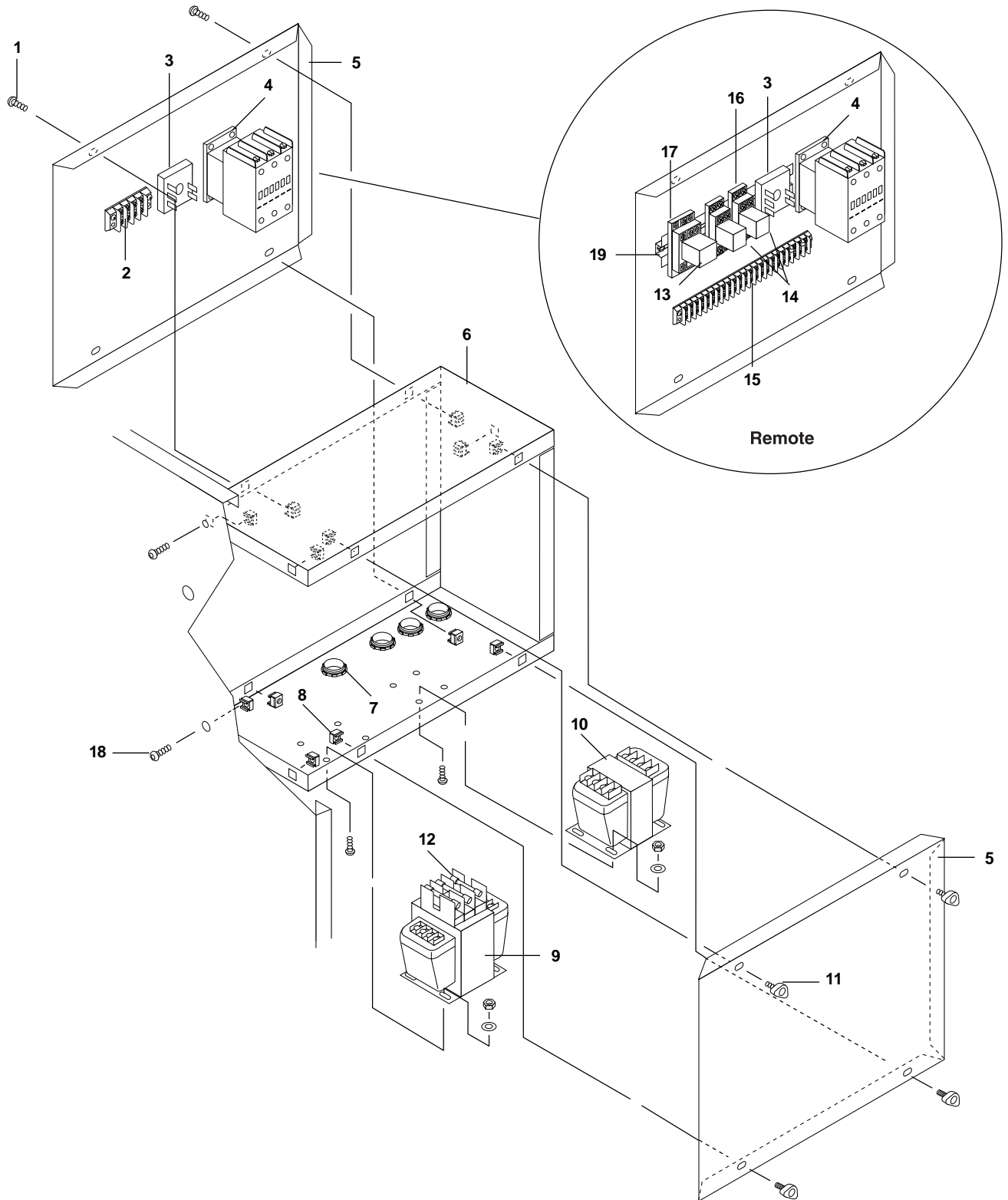
ITEM	PART NO.	DESCRIPTION
1	83-0041002103	1/8" G-F Nipple
2	83-004190102	M4 x 20 Screw
3	83-004100400	Clamp
4	83-004170419	1/4" Outlet Tubes (Hvy Duty Wand)
5	83-004130102	Nozzle Protector
7	83-004030205	M4 Nut
8	83-004020045	Valve Body
9	83-004190003	Self Drilling Screw
10	83-004160134	Upper Plastic Cover
11	83-004380009	Heat Grip Econo Wand
12	83-004380010	Plastic Handle (Right Side)
13	83-004170417	3/8" Inlet Tube (Heavy Duty Wand) SS
14	83-004150404	Adapter Reducer
15	83-004160129	Plastic Handle (Left Side)
16	83-004130105	Plastic Plug

ITEM	PART NO.	DESCRIPTION
17	83-004060302	Screw
18	83-004150109	Copper
19	83-0040080014	Brass Frame
20	83-004160135	Lower Plastic Protector
21	83-004060113	‡ O-Ring
22	83-004000103	‡ Back Ring
23	83-004160503	Stem
24	83-004060112	‡ O-Ring
25	83-004150012	Stem Union
26	83-004030201	10 M Nut
27	83-103150202	Washer
28	83-004100109	Handle
29	83-004080016	Fitting For Handle
30	83-004170009	Handle Kit
	<b>83-004650300</b>	<b>‡ Repair Kit, AR SS Seat (AL334.344)</b>



## VNG ELECTRICAL BOX

All Models

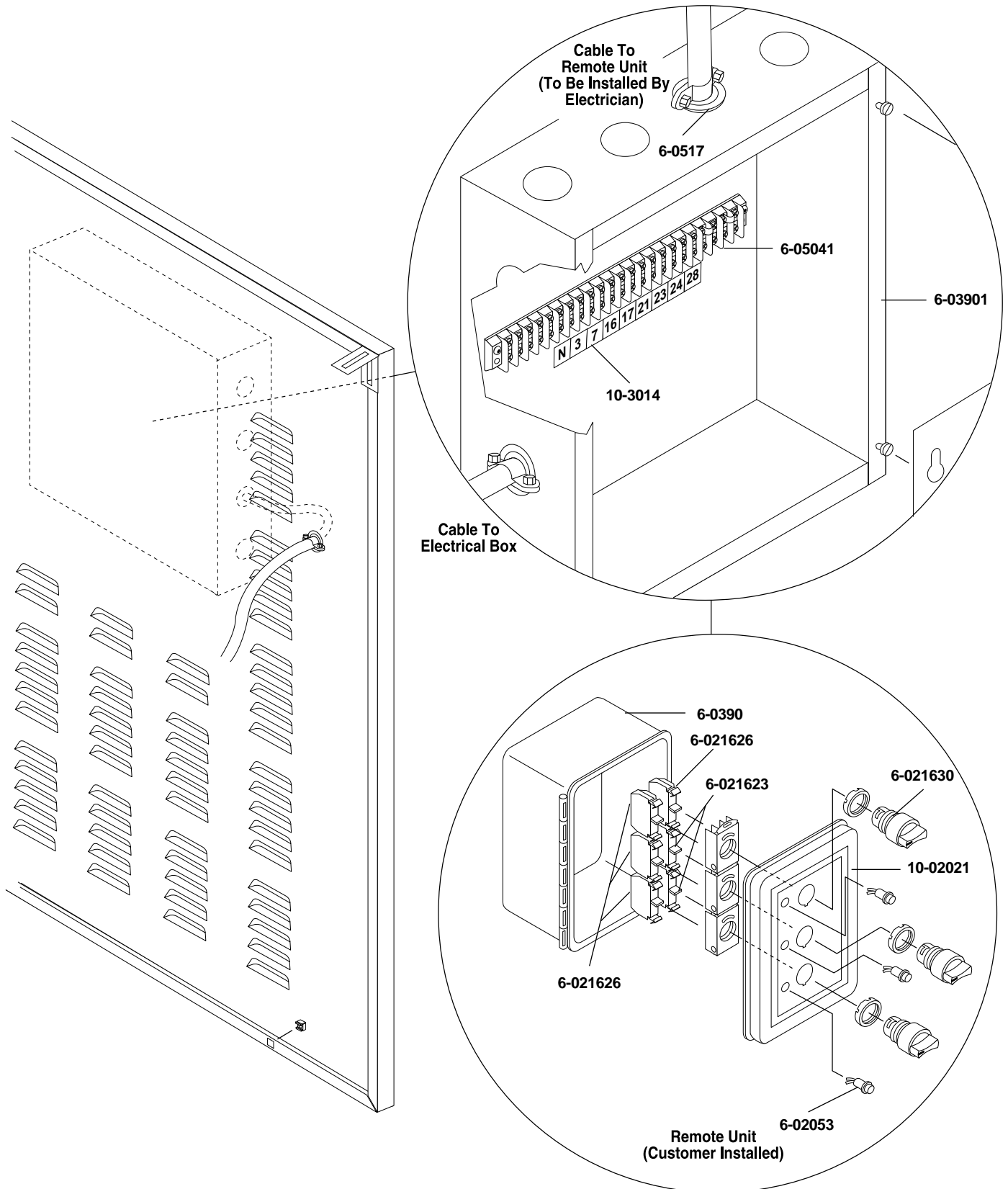


## VNG ELECTRICAL BOX All Models • PARTS LIST

ITEM	PART NO.	DESCRIPTION	QTY	ITEM	PART NO.	DESCRIPTION	QTY
1	90-1991	Screw 10/32" x 1/2" BIR	12	6	95-07163028	Box Elec VNG-L	1
2	6-0504	Block Terminal, 4 Pole	1	7	6-0517	Strain Relief, 3/4"	4
3	6-03680	Timer Solid State 120V 1 min	1	8	90-2018	Nut, ,Cage 10/32" x 16 Ga	8
4	6-1218	Contactor GE C-2000 3-11	1	9	6-052352	Transformer 240/480 - 120V	1
		CL049A310MS				.050 KVA	
	6-1221	4-2, 4-3A, 6-3B, 8-25B,	1		6-052392	Transformer 575 - 120V	
		CL06A311MIS				.050 KVA (All F units)	1
	6-1212	4-2B, CLO2A310TJ	1	10	6-052363	Transformer .050 KVA 24V	1
	6-1205	4-2C, 4-2F, 4-3F CL00A310TJ	1	11	90-19942	Screw 10/32" x 3/4" Hex Wash	4
5	6-1215	4-3B, 6-3C, 6-3F, 8-3C, 8-3F	1	12	6-02295	1/2 Amp Fuse 480V	2
		CL25A310TJS			6-02294	1 Amp fuse 240V	2
	6-1209	4-3C, CL01A310TJ	1		6-02297	▲ Fuse GDL 1/2 Amp 120V Glass	1
	95-07163030	Panel, Elec Box Side	2	13	6-036210	Relay Latch (2) RH2LBUAL120	1
	6-1257	▲ Overload GE RTAIS 4-2B	1	14	6-03621	Relay 120V RH2B-UL-AC120	2
	6-1254	▲ Overload GE RTAIN 4-2C, F	1	15	6-05041	Block, Terminal, 16 Pole	1
	6-1262	▲ Overload GE RTA2E 4-3A	1		6-0505	Bar, Jumper (All Models)	2
	6-1259	▲ Overload GE RTAIU 4-3B	1	16	6-03541	Base, Relay, SH2B-05	2
	6-1255	▲ Overload GE RTAIP 4-3C	1	17	6-035210	Relay, Socket, SH3B-05	1
	6-1254	▲ Overload BD FGZIN 4-3F	1	18	90-1998	Screw, 1/4" x 3/4" BH SOC CS	4
	6-1263	▲ Overload GE RTA2F 6-3B,	1	19	6-021595	Din Rail	1
		8-25B				▲ Not Shown	
	6-1258	▲ Overload GE RTAIT 6-3C,	1				
		8-25C, 8-3F					

## VNG REMOTE ELECTRICAL BOX

All Models



**TROUBLESHOOTING**

<b>BURNER</b>		
<b>PROBLEM</b>	<b>POSSIBLE CAUSE</b>	<b>SOLUTION</b>
<b>FLOW &amp; BURNER SWITCH ON. NO SPARK, NO PILOT GAS</b>	A. No main power	With power switch on, open trigger gun and set your test meter to the 24 volt scale. Probe terminals TH and TR. If you do not read 24 volts, the problem is not the ignition system. Perform normal system checks of main power, transformer, thermostat, and the limit control. If you do read 24 volts at TH and TR, the problem is in the ignition system. Check for loose or defective wiring. If wiring is good, replace the ignition control unit.
	B. Faulty transformer	
	C. Faulty burner & flow switch	
	D. Faulty ignition control unit	
<b>HAVE SPARK, NO PILOT GAS FLOW</b>	Main gas supply turned off	Set test meter to 24 volt scale.
		1. Be sure main gas valve (gas cock or selector arm) is turned on.
		2. With gas on and system sparking, probe terminals PV and TR. If pilot gas does not flow with 24 volts at these terminals, replace gas valve.
		3. If you do not read 24 volts at terminals PV and MV/PV, replace the ignition control unit.
<b>HAVE PILOT GAS, NO SPARK</b>	A. Defective ignitor/sensor and/or its wiring	Set test meter to ohm scale.
		1. Disconnect the wire from the IGN terminal on the ignition control unit.
	B. Faulty ignition control unit	2. Touch one meter probe to the tip of the ignitor/sensor rod in the pilot. Touch the other probe to the quick-connect at the other end of ignitor/sensor wire.
		3. If you have continuity from the tip of the ignitor/sensor rod to the connector and no spark, replace the ignition control unit.
		4. If you do not have continuity through the wire and the ignitor/sensor, check for a loose wire connection in the wire. Repair as needed.
	5. Check to see if spark shorts to furnace through a cut in the ignitor wire.	

**TROUBLESHOOTING**

**Burner Continued**

PROBLEM	POSSIBLE CAUSE	SOLUTION
<p><b>HAVE PILOT FLAME, MAIN BURNER WILL NOT TURN ON</b></p>	<p>Faulty main valve coil in the gas valve</p>	<p>Set test meter to 24 volt scale.</p>
	<p>Faulty ignitor/sensor and/or its wiring</p>	<p>With pilot flame on ignitor/sensor, probe terminals MV and MV/PV on the ignition control unit. If you read 24 volts here, but not at the gas valve, there is a loose wiring connection. Repair or replace a as needed.</p>
	<p>Ground wire not attached to machine chassis</p>	<p>If you do read 24 volts at MV and MV/PV and the pilot flame is impinging on the ignitor/sensor rod, the problems may be:</p>
	<p>Faulty ignition control unit</p>	<p>a. Faulty ignitor/sensor and/or its wiring.</p>
		<p>b. Faulty ignition control unit.</p>
		<p>Set test meter to the ohm scale. Turn burner switch off.</p>
		<p>Check continuity through the green ground wire and its connections.</p>
<p>Reconnect the ignitor/sensor wire and the ground wire.</p>		
<p>Turn burner switch on. With the pilot burning and the flame on the ignitor/sensor rod, the main burner should turn on. If it does not, replace the ignition control unit.</p>		
<p><b>SHORT-CYCLING OF MAIN BURNER. MAIN BURNER TURNS OFF BEFORE THE BURNER SWITCH OR FLOW SWITCH IS TURNED OFF</b></p>	<p>Draft condition pulls flame away from ignitor/sensor rod.</p>	<p>Check the thermostat by bypassing at terminals P1 &amp; 1.</p>
		<p>Set thermostat high. With main burner on, observe the pilot flame impingement on the ignitor/sensor.</p>
	<p>Faulty thermostat or water temperature is too high</p>	<p>If pilot flame is small and draft condition pulls flame from ignitor sensor rod, the burner will turn off and then on again.                      a. Adjust pilot flame higher or clean pilot oriface.                      b. Bend ignitor/sensor rod closer to pilot flame.</p>
		<p>If flame impingement on the ignitor/sensor is stable and the system short-cycles, check the limit switch.</p>
		<p>Set test meter to 110 volt scale                      a. When the system cycles off, probe the switch terminals of the limit switch.                      b. If you read 24V accross the switch terminals the limit switch is open. Replace the limit switch.</p>
<p>A pilot flame set too high will also cause burner to short cycle. Pilot flame lifts over ignitor/sensor.</p>		

**TROUBLESHOOTING**

<b>PROBLEM</b>	<b>POSSIBLE CAUSE</b>	<b>SOLUTION</b>
<b>LOW OPERATING PRESSURE</b>	Faulty pressure gauge	Install new gauge.
	Insufficient water supply	Use larger garden hose; clean filter washer at water inlet.
	Old, worn or incorrect spray nozzle	Match nozzle number to machine and/or replace with new nozzle.
	Belt slippage	Tighten or replace; use correct belt.
	Plumbing or hose leak	Check plumbing.
	Faulty or misadjusted unloader valve (where applicable)	Adjust unloader for proper pressure. Install repair kit when needed.
	Worn packing in pump	Install new packing kit.
	Fouled or dirty inlet or discharge valves in pump	Clean inlet and discharge valves.
	Worn inlet or discharge valves	Replace with valve kit.
	Obstruction in spray nozzle	Remove obstruction.
	Leaking pressure control valve (where applicable)	Rebuild or replace as needed.
	Chemical metering valve left open sucking air, or faulty metering valve	Close and/or replace metering valve.
Slow motor RPM	Check incoming voltage.	
<b>LOW WATER TEMPERATURE</b>	Improper size of gas lines	See page 5 for sizing of gas lines.
	Low gas pressure	Increase gas pressure to machine.
	Improper pressure regulator	Specify BTU, building gas pressure and 11" wc to machine for correct sizing of regulator.
	Low gas valve pressure	Increase gas pressure as described on page 12.
	Soot buildup on coils not allowing heat transfer	Clean coils.
	Improper burner nozzle	See specifications on page 90.

## TROUBLESHOOTING

PROBLEM	POSSIBLE CAUSE	SOLUTION
<b>WATER TEMPERATURE TOO HOT</b>	Incoming water to unit warm or hot	Lower incoming water temperature.
	Gas pressure too high	See specifications for proper gas pressure.
	Chemical line sucking air	Tighten all clamps Check chemical lines for holes.
	Defective high limit switch	Replace.
	Incorrect burner nozzle size	See specifications on page 90 for proper size.
	Insufficient water supplied	Check water G.P.M. to machine.
	Restricted water flow	Check nozzle for obstruction, proper size.
<b>CHEMICAL NOT DRAWING</b>	Air leak	Tighten all clamps. Check chemical lines for holes.
	Chemical metering valve packing not tight or packing worn	Tighten nut. Replace valve or packing.
	Filter screen on chemical suction hose plugged	Clean or replace.
	Dried up chemical plugging metering valve	Disassemble and clean thoroughly.
	High viscosity of chemical	Dilute chemical to specifications.
	Restriction behind float tank screen removed	Install restriction.
	Hole in chemical line(s)	Repair hole.
	Strainer basket plugged	Remove and clean.
	Connections on selector valve loose	Put teflon tape on all pipe connections.
	Chemical solenoid not opening (where applicable)	Check flow switch, replace chemical solenoid.
	<b>PUMP RUNNING NORMALLY BUT PRESSURE LOW ON INSTALLATION</b>	Pump sucking air
Valves sticking		Check and clean or replace if necessary.
Unloader valve seat faulty		Check and replace if necessary.
Nozzle incorrectly sized		Check and replace if necessary (see serial plate for proper size).
Worn piston packing		Check and replace if necessary.

**TROUBLESHOOTING**

<b>PROBLEM</b>	<b>POSSIBLE CAUSE</b>	<b>SOLUTION</b>
<b>FLUCTUATING PRESSURE</b>	Valves worn	Check and replace if necessary.
	Blockage in valve	Check and replace if necessary.
	Pump sucking air	Check water supply and air seepage at joints in suction line.
	Worn piston packing	Check and replace if necessary.
<b>PUMP NOISY</b>	Air in suction line	Check water supply and connections on suction line.
	Broken or weak inlet or discharge valve springs	Check and replace if necessary.
	Excessive matter in valves	Check and clean if necessary.
	Worn bearings	Check and replace if necessary.
<b>PRESENCE OF WATER IN OIL</b>	Oil seal worn	Check and replace if necessary.
	High humidity in air	Check and change oil twice as often.
<b>WATER DRIPPING FROM UNDER PUMP</b>	Piston packing worn	Check and replace if necessary.
	O-Ring plunger retainer worn	Check and replace if necessary.
<b>OIL DRIPPING</b>	Oil seal worn	Check and replace if necessary.
<b>EXCESSIVE VIBRATION IN DELIVERY LINE</b>	Irregular functioning of the valves	Check and replace if necessary.
<b>RELIEF VALVE LEAKS WATER</b>	Relief valves defective	Replace or repair.



**BURNER SPECIFICATIONS**

<b>MODEL</b>	<b>BURNER ASSEMBLY</b>	<b>JET SIZE</b>	<b>GAS VALVE</b>	<b>PILOT ORIFICE CONVERSION</b>
VNG3-1000	X - 44	#56	3/4" 7000MVRHC	No
VNG4-2000	X - 44	#54	3/4" 7000MVRHC	No
VNG4-3000	X - 44	#54	3/4" 7 000MVRHC	No
VNG6-3000	X - 98	#54	1" 7000MVRHC	No
VNG8-2500	X - 98	#54	1" 7000MVRHC	No
VLP3-1000	X - 44	#69	3/4" 7000MV4HC Kit	Yes
VLP4-2000	X - 44	#65	3/4" 7000MV4HC-LP Kit	Yes
VLP4-3000	X - 44	#65	3/4" 7000MV4HC-LP Kit	Yes
VLP6-3000	X - 98	#66	1" 7000MV4HC-LP Kit	Yes
VLP8-2500	X - 98	#66	1" 7000MV4HC-LP Kit	Yes

## **BASIC FACTS**

BASED ON 60° F	PROPANE	BUTANE
Formula	C3H8	C4H10
Vaporization Point (°F)	-43.7	31.1
Specific Gravity (Vapor)	1.522	2.006
Specific Gravity (Liquid)	0.508	0.584
Lbs. Per Gallon (Liquid)	4.23	4.87
B.T.U. Per Cubic Foot (Vapor)	2.563	3.39
B.T.U. Per Lb. (Vapor)	21.663	21/3-9
B.T.U. Per Gallon (Liquid)	91.74	1-3/93-
Cubic Feet Per Lb. (Liquid)	8.607	7/53
Cubic Feet Per Gallon (Liquid)	3.45	31/9
Octane Number	125	1
Molecular Weight	44.09	58.12
To calculate running cost:		
1 cubic ft./1,000 BTU		
100 cubic ft./Therm		
Therm/hour		
50¢/Therm		
Example:	Using natural gas	
	400,000 BTU Machine	
	400 cubic feet	
	4 Therms/hour	
	4 x .50 = \$2.00/hour to run	

## **PRESSURE EQUIVALENTS**

Simply stated, pressure is the force exerted by a gas or liquid attempted to escape from a container. It is useful to know how strong this "attempt to escape" is. Pressure can be measured with a manometer or with a pressure gauge. At the lower levels, it is expressed in "inches of water column," i.e. 11" w.c. Higher pressures are expressed in terms of the force exerted against a square inch of area. For example, 125 lbs. per square inch (125 PSI).

1" Water Column	=	50 oz./sq. in.	11" Water Column	=	6.35 oz./sq. in.
11" Water Column	=	4 lb./sq. in.	1 lb./sq. in.	=	27.71" Water Column
1 lb./sq. in.	=	2.04" Mercury	1" Mercury	=	.39 lb./sq. in.
1 Std. Atmosphere	=	14.73 lbs./sq. in.			





## LANDA LIMITED NEW PRODUCT WARRANTY PRESSURE WASHERS

(Effective January 1, 1997)

### WHAT THIS WARRANTY COVERS

All LANDA pressure washers are warranted by LANDA, INC. to the original purchaser to be free from defects in materials and workmanship under normal use, for the periods specified below. This Limited Warranty is subject to the exclusions shown below, is calculated from the date of the original purchase, and applies to the original components only. Any parts replaced under this warranty will assume the remainder of the part's warranty period.

#### LIFETIME PARTS AND ONE YEAR LABOR WARRANTY:

Brass manifolds on all pressure washer pumps carry an unconditional warranty.

#### FIVE YEAR PARTS AND ONE YEAR LABOR WARRANTY:

Components manufactured by Landa, such as frames, handles, coil wraps, float tanks, fuel tanks, belt guards, and coils. Schedule 40 coils will be prorated at the rate of 25% per year after two years. Internal components on the oil-end of all pressure washer pumps.

#### ONE YEAR MINIMUM ON PARTS AND ONE YEAR LABOR WARRANTY:

All other components, excluding normal wear items as described below, will be warranted for the duration specified by the original component manufacturer, with a one year minimum. Labor warranty on these parts will be for one year regardless of the duration of the original component manufacturer's part warranty.

#### WARRANTY PROVIDED BY OTHER MANUFACTURERS:

Motors, generators, and engines, which are warranted by their respective manufacturers, are serviced through these manufacturers' local authorized service centers. LANDA cannot provide warranty on these items.

#### NON-WARRANTY REPLACEMENT PARTS:

These parts, excluding normal wear items as described below, will be warranted for the duration specified by the original component manufacturer. There will be no labor warranty on these parts.

#### WHAT THIS WARRANTY DOES NOT COVER

This warranty does not cover the following items:

1. Normal wear items, such as nozzles, guns, discharge hoses, wands, quick couplers, seals, filters, gaskets, O-rings, packings, pistons, valve assemblies, strainers, belts, brushes.
2. Damage or malfunctions resulting from accidents, abuse, modifications, alterations, incorrect installation, improper servicing, failure to follow manufacturer's maintenance instructions, or use of the equipment beyond its stated usage specifications as contained in the operator's manual.
3. Damage due to freezing, chemical deterioration, scale build up, rust, corrosion, or thermal expansion.
4. Damage to components from fluctuations in electrical or water supply.
5. Normal maintenance service, including adjustments, fuel system cleaning, and clearing of obstructions.
6. Transportation to service center, field labor charges, or freight damage.
7. Labor warranty is specially excluded for all machines used for rental purposes.

#### WHAT YOU MUST DO TO OBTAIN WARRANTY SERVICE

While not required for warranty service, we request that you register your LANDA pressure washer by returning the completed registration card. In order to obtain warranty service on items warranted by LANDA, you must return the product to your Authorized LANDA Dealer, freight prepaid, with proof of purchase, within the applicable warranty period. If the product is permanently installed, you must notify your Authorized LANDA Dealer of the defect. Your Authorized LANDA Dealer will file a claim with Landa, who must subsequently verify the defect. In most cases, the part must be returned to LANDA freight prepaid with the claim. For warranty service on components warranted by other manufacturer's, your Authorized LANDA Dealer can help you obtain warranty service through these manufacturers' local authorized service centers. If you are unable to resolve the warranty claim satisfactorily, write to LANDA at 4275 N.W. Pacific Rim Blvd., Camas, WA 98607, ATT: Warranty Dept., detailing the nature of the defect, the name of the Authorized LANDA Dealer, and a copy of the purchase invoice.

#### LIMITATION OF LIABILITY

LANDA'S liability for special, incidental, or consequential damages is expressly disclaimed. In no event shall LANDA'S liability exceed the purchase price of the product in question. LANDA makes every effort to ensure that all illustrations and specifications are correct, however, these do not imply a warranty that the product is merchantable or fit for a particular purpose, or that the product will actually conform to the illustrations and specifications. **THE WARRANTY CONTAINED HEREIN IS IN LIEU OF ALL OTHER WARRANTIES, EXPRESS OR IMPLIED, INCLUDING ANY IMPLIED WARRANTY OF FITNESS FOR A PARTICULAR PURPOSE.** LANDA does not authorize any other party, including authorized LANDA Dealers, to make any representation or promise on behalf of LANDA, or to modify the terms, conditions, or limitations in any way. It is the buyer's responsibility to ensure that the installation and use of LANDA products conforms to local codes. While LANDA attempts to assure that its products meet national codes, it cannot be responsible for how the customer chooses to use or install the product.



4275 N.W. Pacific Rim Blvd. • Camas, WA 98607

Form #96-610 • Revised 5/99 • Printed in U.S.A. for Landa, Inc., Camas, WA 98607