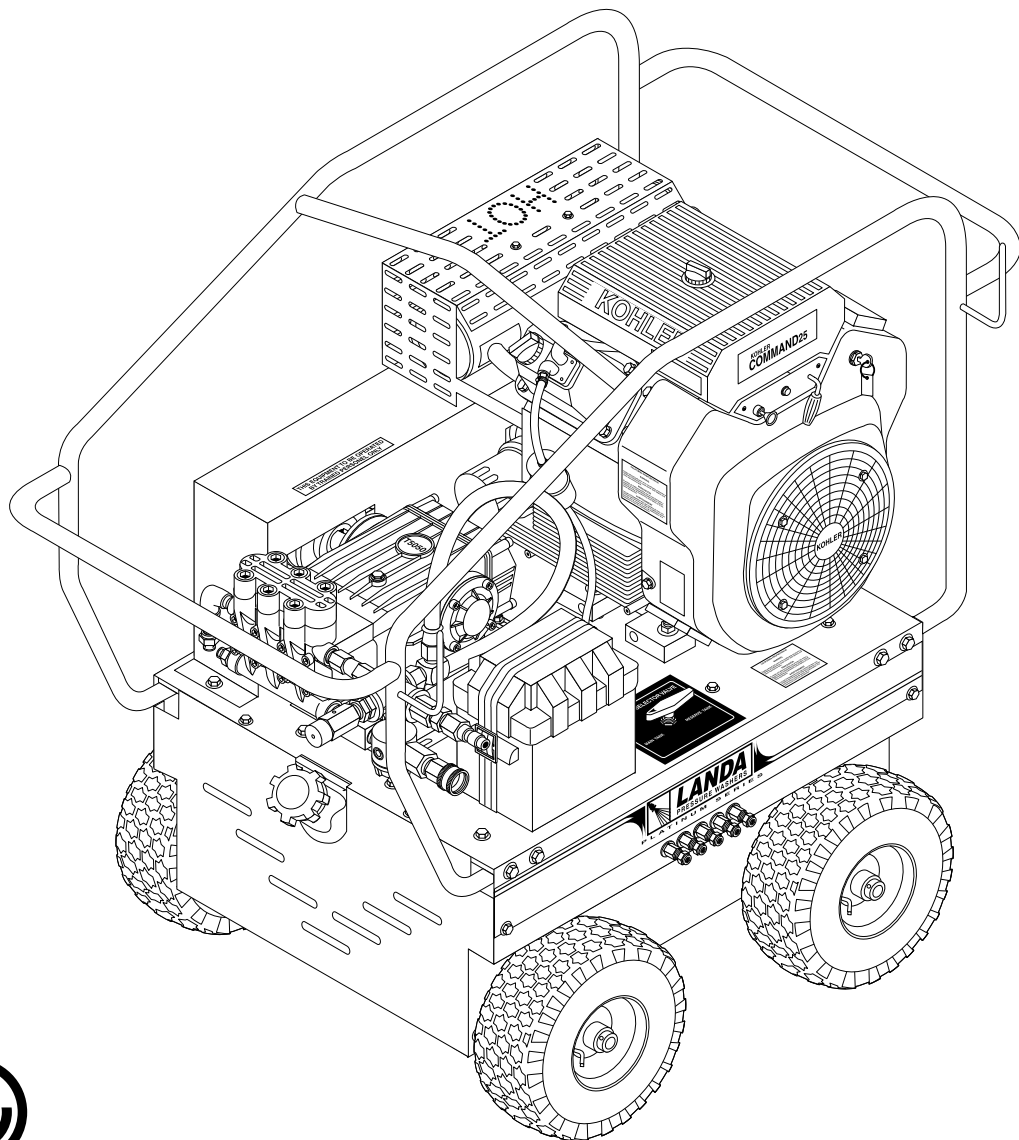




MPG

OPERATOR'S MANUAL

■ MPG5-5000



LANDA, INC. ■ 4275 N.W. Pacific Rim Blvd. ■ Camas, WA 98607 ■ USA

For technical assistance or the Landa Dealer nearest you, call 800-LANDA-4-U (800-526-3248) or (360) 833-9100
or consult our web page at www.landa-inc.com

CONTENTS

Introduction	4
Important Safety Information	4, 5
Pre-Operation Check	5
Set-up Procedures	5
Operating Instructions	5
General Washing Techniques	5
Shut Down Procedures	5, 6
How to Use Detergent Injector	6
Component Identification	7
Exploded View, Left Side	8
Exploded View, Right Side	9
Exploded View, Parts List	10, 11
Hose & Spray Gun Assembly	12
Downstream Injector	13
Troubleshooting	14-15
Preventative Maintenance	16
Oil Change Record	16
Warranty	17

Model Number _____

Serial Number _____

Date of Purchase _____

The model and serial numbers will be found on a decal attached to the pressure washer. You should record both serial number and date of purchase and keep in a safe place for future reference.

INTRODUCTION

Thank you for purchasing a Landa Pressure Washer.

This manual covers the operation and maintenance of the MPG5-50921E and MPG5-50321E washers. All information in this manual is based on the latest product information available at the time of printing.

Landa, Inc. reserves the right to make changes at any time without incurring any obligation.

The MPG Series was designed for maximum use of 8 hours per day, 5 days per week.

Owner/User Responsibility:

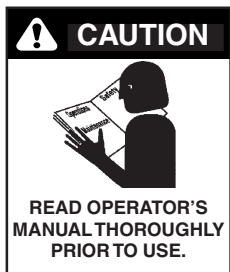
The owner and/or user must have an understanding of the manufacturer's operating instructions and warnings before using this Landa pressure washer. Warning information should be emphasized and understood. If the operator is not fluent in English, the manufacturer's instructions and warnings shall be read to and discussed with the operator in the operator's native language by the purchaser/owner, making sure that the operator comprehends its contents.

Owner and/or user must study and maintain for future reference the manufacturers' instructions.

This manual should be considered a permanent part of the machine and should remain with it if machine is resold.

When ordering parts, please specify model and serial number.

IMPORTANT SAFETY INFORMATION



CAUTION: To reduce the risk of injury, read operating instructions carefully before using.

1. Read the owner's manual thoroughly. Failure to follow instructions could cause malfunction of the machine and result in death, serious bodily injury and/or property damage.
2. Know how to stop the machine and bleed pressures quickly. Be thoroughly familiar with the controls.
3. **Stay alert** - watch what you are doing.
4. All installations must comply with local codes. Contact your electrician, plumber, utility company or the selling distributor for specific details.



WARNING: Risk of asphyxiation. Use this product only in a well ventilated area.

5. Avoid installing machines in small areas or near exhaust fans. Exhaust contains poisonous carbon monoxide gas; exposure may cause loss of consciousness and may lead to death. It

also contains chemicals known, in certain quantities, to cause cancer, birth defects or other reproductive harm.



WARNING: Flammable liquids can create fumes which can ignite causing property damage or severe injury.

WARNING: Risk of fire. Do not add fuel when the product is operating.

WARNING: Risk of explosion — do not spray flammable liquids.

6. Allow engine to cool for 2 minutes before refueling. If any fuel is spilled, make sure the area is dry before testing the spark plug or starting the engine. (Fire and/or explosion may occur if this is not done.)

Gasoline engines on mobile or portable equipment shall be refueled:

- (a) outdoors;
- (b) with the engine on the equipment stopped;
- (c) with no source of ignition within 10 feet of the dispensing point; and
- (d) with an allowance made for expansion of the fuel should the equipment be exposed to a higher ambient temperature.

In an overfilling situation, additional precautions are necessary to ensure that the situation is handled in a safe manner.

7. Do not place machine near flammable objects as the engine is hot.



WARNING: High pressure stream of fluid that this equipment can produce can pierce skin and its underlying tissues, leading to serious injury and possible amputation.

8. High pressure developed by these machines will cause personal injury or equipment damage. Use caution when operating. Do not direct discharge stream at people, or severe injury or death will result.

- Never make adjustments on machine while it is in operation.



WARNING: High pressure spray can cause paint chips or other particles to become airborne and fly at high speeds.

- Eye safety devices and foot protection must be worn when using this equipment.
- Machines with spray gun should not be operated with the spray gun in the off position for extensive periods of time as this may cause damage to the pump.
- The best insurance against an accident is precaution and knowledge of the machine.
- Landa will not be liable for any changes made to our standard machines, or any components not purchased from Landa.
- Read engine safety instructions provided.



WARNING: Keep water spray away from electrical wiring or fatal electric shock may result.

- Never run pump dry or leave spray gun closed longer than 5 minutes.
- To reduce the risk of injury, close supervision is necessary when a machine is used near children. **DO NOT ALLOW CHILDREN TO OPERATE the pressure washer. This machine must be attended during operation.**

PRE-OPERATION CHECK

- Pump oil (SAE 30W non-detergent oil, General)
- Cold, fresh clean water supply (6 gpm • 5/8" • 20 psi)
- Hose, wand, nozzle (nozzle size per serial plate)
- Water filter (intact, non restrictive)
- Fuel (unleaded 86 or higher octane)
- Engine oil (SAE 10W40)

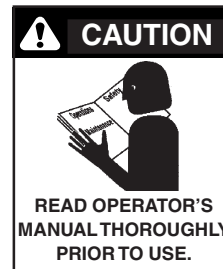
SET-UP PROCEDURES

These machines are designed for indoor use only. Machine must be stored indoors when not in use.

- Attach a 5/8" garden hose to inlet connector. Minimum flow should be 5 gpm.
- Attach high pressure hose to discharge nipple using quick coupler. Lock coupler securely into place by pulling back coupler collar and inserting it onto discharge nipple, then pushing collar forward to lock in place.

- Attach wand to spray gun using teflon tape on threads to prevent leakage.
- Attach swivel connector on discharge hose to spray gun using teflon tape on threads.
- Remove oil plug on top of pressure washer pump and replace with dipstick supplied. (This may be installed from the factory.)
- Check oil level on sight glass on side of pump. Oil should be visible one-half way up sight glass (30W non-detergent).
- Fill gasoline tank and check engine oil.
- Electric start models require a 12V U-1 garden tractor battery (not included).

OPERATING INSTRUCTIONS



CAUTION: Read instructions thoroughly prior to use. Failure to follow instructions could result in property damage or personal injury.

- Read engine warning and operating instructions.
- Turn on water at faucet and pull trigger on spray gun allowing water to flow until all air has discharged from system. Check for water leaks; tighten as needed.
- Pull wand coupler collar back and insert pressure nozzle into coupler then secure by pushing collar forward.
- Read engine manual, turn on gas valve, choke, turn switch to start position, turn the start key on the engine. Turn off choke.

CAUTION: Small engines may kick back. Do not hold pull rope tightly in hand.

CAUTION: Pull trigger on spray gun to relieve pressure if machine does not start after one pull of engine starter rope.

- With spray nozzle pointed away from you or anybody else, press trigger on spray gun to obtain pressurized spray.

GENERAL WASHING TECHNIQUES

- Hold spray nozzle approximately one foot from the surface being cleaned. Spray at an angle to get under the material and lift it off.
- When washing large objects, use detergent injector to apply detergent (see section "How to use the Detergent Injector"). Start washing from the bottom and work up. Better detergent economy and faster results will be obtained by allowing the detergent to set 5-10 minutes. After washing, rinse from the top down.

3. Cleaning heavy dirt or material away with a hard stream of clear water is recommended before using a cleaning agent.

SHUT DOWN PROCEDURES

1. Rinse all lines (and injector) with clean water, to remove any soap residue.
2. Turn engine off.
3. Turn off water supply.
4. Open spray gun to relieve remaining pressure.
5. Remove water supply hose.
6. In freezing conditions, disconnect water supply and open spray gun to allow water to drain, then turn off motor.

CAUTION: Do not allow pump to run longer than 5 minutes without water. Disconnect all hoses to allow water to drain. With machine off, open spray gun to release pressure before removing discharge hose.

HOW TO USE THE DETERGENT INJECTOR



WARNING: Some detergents may be harmful if inhaled or ingested, causing severe nausea, fainting or poisoning. The harmful elements may cause property damage or severe injury.

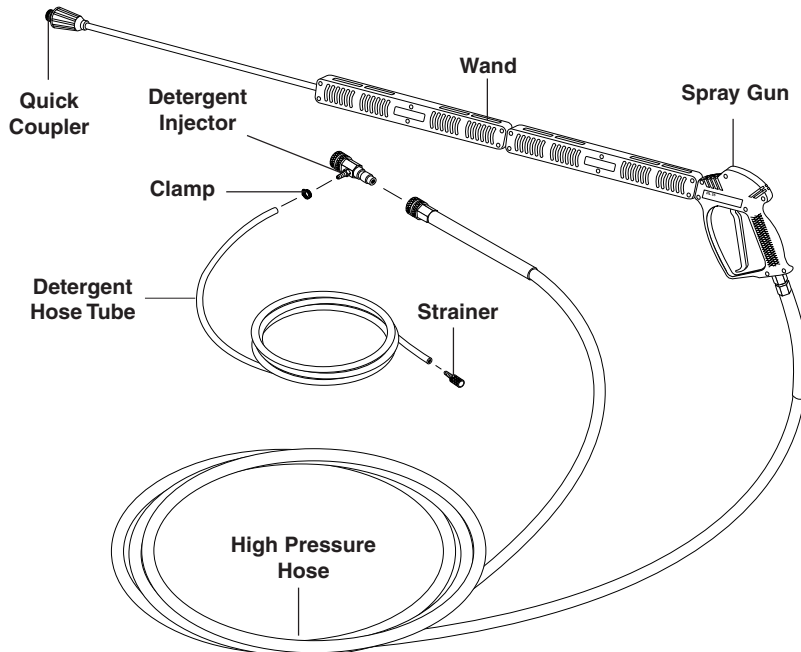
The machine can siphon and mix detergents with the use of Landa's detergent injector kit.

1. Pull injector quick coupler collar back and secure on discharge nipple. Injector valve body arrow should point in direction of flow.
2. Connect high pressure hose to injector nipple securing quick coupler.
3. Start machine as outlined in Operating Instructions.
4. Place detergent pick-up tube into container of detergent solution.
5. Install the brass soap nozzle provided with the injector into the quick coupler of the wand. Models with a variable pressure wand have this nozzle built into the wand.
6. Pull trigger on spray gun. Water detergent ratio is approximately 15 to 1.
7. When you finish washing, rinse by simply releasing the trigger on the spray gun, removing the soap nozzle, and replacing the pressure nozzle back into quick coupler.

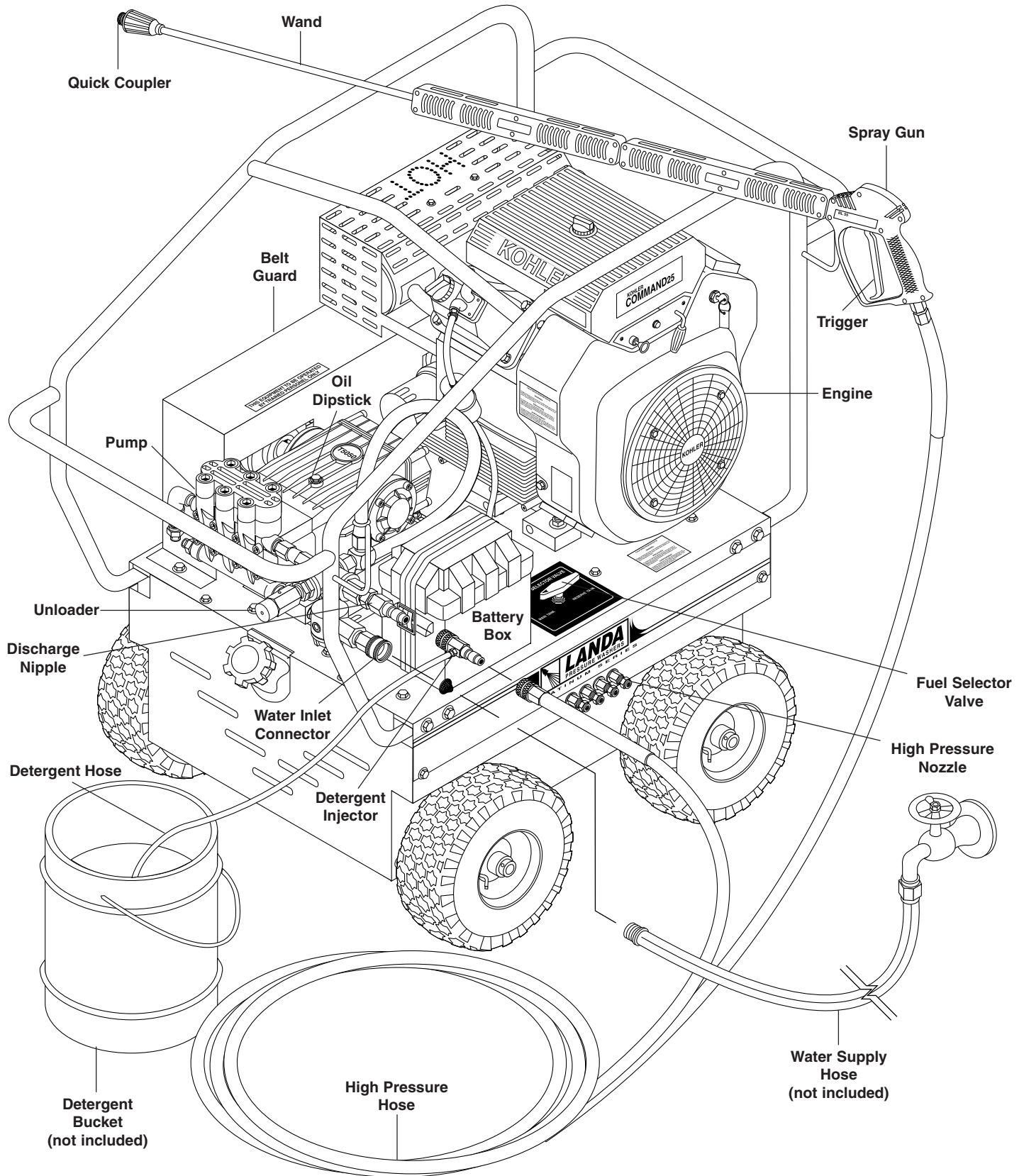
NOTE: The detergent injector will not siphon with the high pressure nozzle at the end of the wand.

8. If your machine has a variable pressure wand, turn the pressure control handle counterclockwise to lower the pressure by directing the water flow through the soap nozzle. This allows the detergent injector to siphon soap. To rinse with high pressure water, simply turn the control handle clockwise.
9. For clean up, place detergent pick-up tube into container of clear water and follow steps 5 and 8 to prevent detergent deposits from damaging the injector.

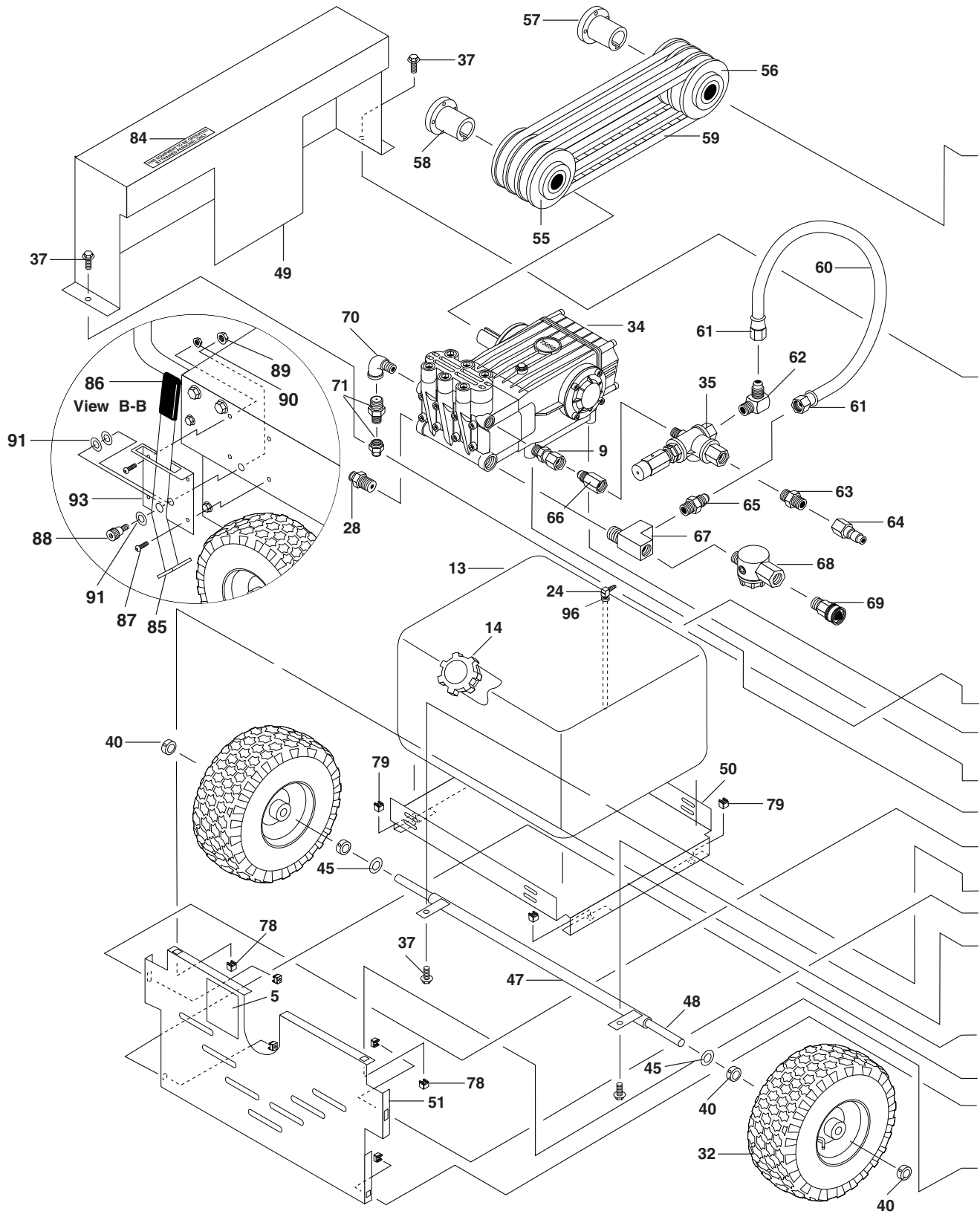
DETERGENT INJECTOR COMPONENTS



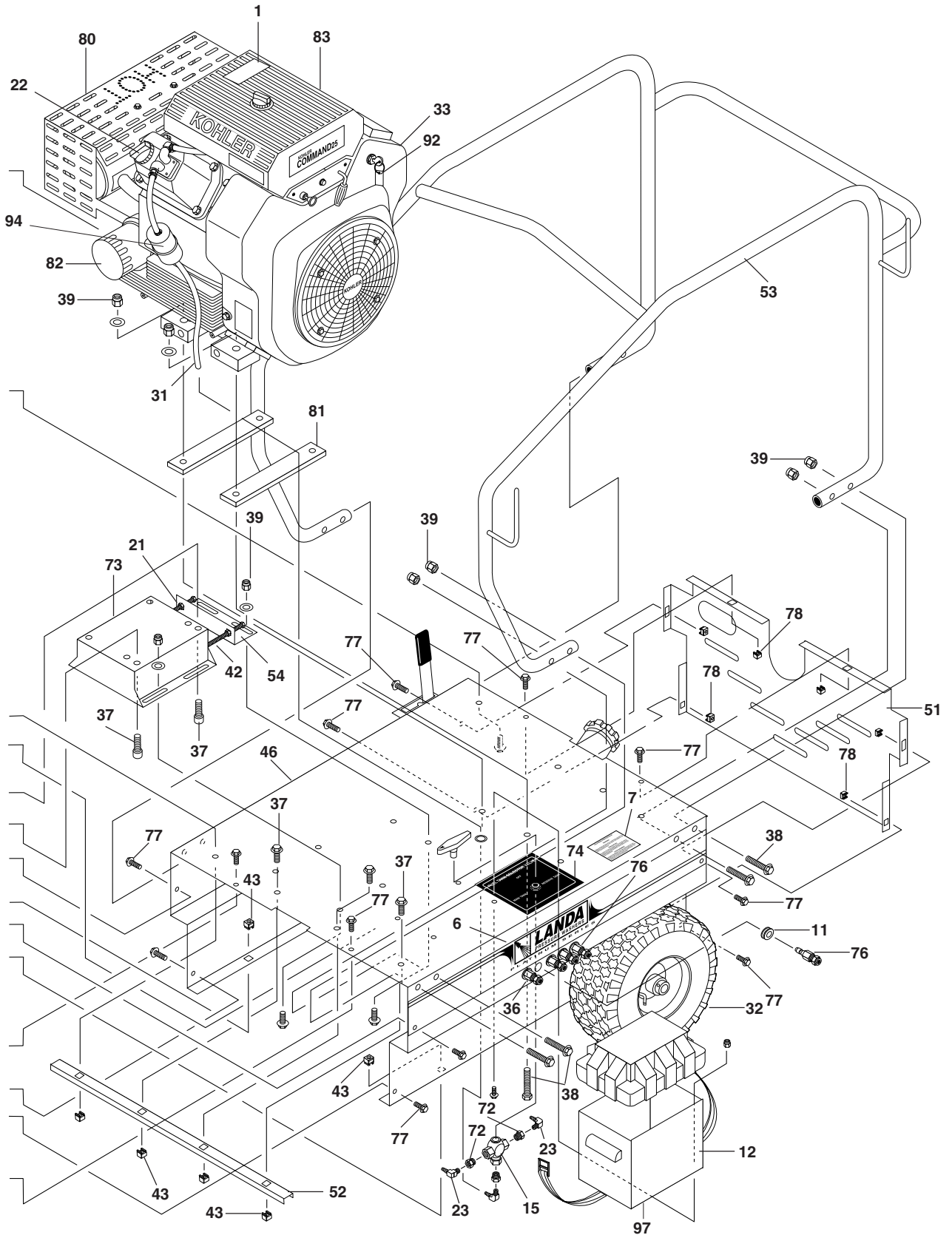
COMPONENT IDENTIFICATION



EXPLODED VIEW
LEFT SIDE



EXPLODED VIEW RIGHT SIDE



**EXPLODED VIEW
PARTS LIST**

ITEM	PART NO.	DESCRIPTION	QTY
1	1-02025A	Label, Hot Caliente	1
2	10-020MPG	▲ Label, MPG, Lexan	1
3	10-08014	▲ Label, Made in USA	1
4	10-2055000	▲ Label, 5-5000 Lexan	1
5	10-02011	Label, Tank For Gas	2
6	10-99079	Label, Platinum Series, SEA	2
7	10-99081	Label, Prop 65 Warning	1
8	2-1052	Nipple, 1/2" JIC x 3/8" Pipe	1
9	2-0079	Swivel, 1/2" JIC Fem 3/8" Male	1
10	2-1050	Plug, 1/2" JIC Flare	1
11	2-0103	Grommet, Rubber Nozzle	5
12	2-0117	Box, Battery, MPG	1
13	2-011541	Tank, Fuel, MPG	2
14	2-01167	Cap, Fuel Tank, Plastic	2
15	2-30023	Valve, 1/4" Brass 3-Way	1
16	2-01403	Bushing, Snap, 5/8"	1
21	90-2007	Nut, 3/8", Hex NC	2
22	73-2478612	Muffler, Kohler	1
23	2-1089	Hose Barb, 1/4" Barb x 1/4" Male Pipe, 90°	3
24	2-010062	Diptube Assy, Plastic, 7.5" Long	2
26	2-2007	Nipple, 3/8" x 3/8" NPT ST Male	1
28	2-30082	Pump Protector, 1/2" PTP	1
29	2-9000	Clamp, Screw #4	6
31	4-02100000	Hose, 1/4" Push-on /Ft.	5.5
32	4-0307	Wheel, 6" Steel Rim	4
33	5-0400	Engine, Kohler 25 HP	1
	5-01094	Engine, Honda, GX670TXF2, 24 HP, E/S	1
34	5-2330	Pump, General T-5050	1
35	5-3014	Unloader, General	1
36	2-1072	Bushing 1/4" x 1/8" Pipe	1
37	90-1996	Screw, 3/8" x 3/4" HH NC, Whiz	8
38	90-19961	Screw, 3/8" x 3/4" HH Whiz	12
39	90-20040	Nut, 3/8" Flange Whiz Loc	14
40	90-20041	Collar, 5/8" Bore Shaft 3010	8
41	90-2006	Nut, 5/16" Hex	4
42	90-10220	Bolt 3/8" x 3-1/2" Tap	2
43	90-2020	Nut, Cage, 3/8" x 12 GA	13

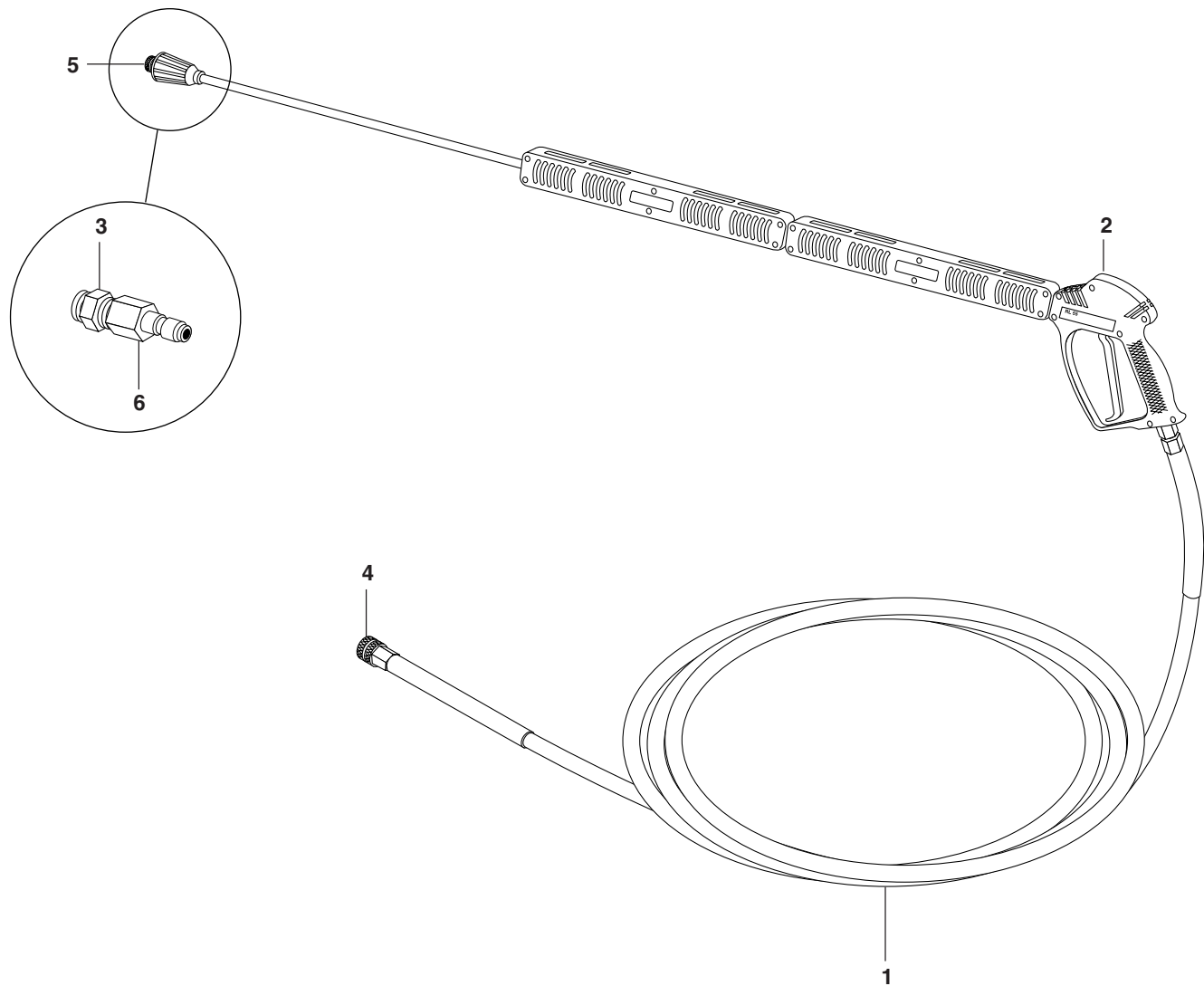
ITEM	PART NO.	DESCRIPTION	QTY
44	90-4002	Washer, 3/8", SAE Flat	2
45	90-4005	Washer, 5/8", Flat SAE	4
46	95-07290063	Base, Main, MPG/MPE	1
47	95-07290006	Axle, Holder Assy, VHW	2
48	95-07290064	Axle, 23" VHW	2
49	95-07141017	Belt Guard, Compl. SEHW	1
50	95-07290033	Bracket, Fuel Tank, VHW	2
51	95-07290015	Panel, Chassis, Front/Back	2
52	95-07290041	Brace, Chassis, MVP, VHG	2
53	95-07290061	Cage Assy, MVP	1
54	95-07141110	Retainer, Pump Take Up	1
55	5-407040	Pulley, 3TB40, Pump	1
56	5-41008001	Pulley, 3BK80H, Motor	1
57	5-531144	Bushing, P2 x 1-7/16"	1
	5-531113	Bushing, P2 x 1-1/8" (Honda Only)	1
58	5-512024	Bushing, H x 24 mm	1
59	5-604046	Belt, BX46	3
60	4-02110000	Hose, 1/2" Push-On /Ft.	2
61	2-1105	Swivel, 1/2" JIC Female	4
62	2-1060	Elbow, 1/2" JIC x 3/8"	1
63	2-0006	Nipple, Hex 3/8"	1
64	2-20022	Nipple, 3/8" Female	1
65	2-1053	Nipple, 1/2" JIC x 1/2" Pipe	2
66	2-00510	Nipple, 1/2" JIC, 3/8" Fem	1
67	2-1042	Tee, 1/2" Street	1
68	2-1923	Strainer, 1/2", PA, Inline, Plastic	1
69	2-10942	Swivel, 1/2" MP x 3/4" GHF	1
70	2-00271	Elbow, Street, 3/8" x 1/2" Steel	1
71	2-3408	Disk, Rupture Assy. 8000 PSI	1
	2-3480	Disk, Rupture Replacement 8000 PSI	1
72	2-1074	Bushing 3/8" x 1/4" Pipe	3
73	95-071211125	Pump Rail, Heavy Duty	1
74	10-08032	Label, Fuel Selector	1
76	2-20024	Nipple, 1/4" Female, 5000 PSI	5
77	90-19711	Screw 1/4" x 1/2" Whiz Loc	14
78	90-20231	Nut, Cage 1/4" x 12 GA	14
79	90-2022	Nut, Cage 1/4" x 16 GA	8

**EXPLODED VIEW
PARTS LIST (CONTINUED)**

ITEM	PART NO.	DESCRIPTION	QTY
80	95-07290067	Muffler, Guard	1
81	95-07141000	Mount, Flatbar, Kohler Eng.	2
82	73-1205001	Filter, Oil, Kohler	1
83	73-4708303	Filter, Air, Kohler	1
84	10-02039	Label, Trained Personnel	1
85	95-0720086	Assembly, Lever Brake	1
86	2-01212	Cap, Vinyl, Yellow	1
87	90-1995	Screw 1/4" x 1/2"	4
88	90-1992	Screw 3/8" x 3/8"	1
89	90-2001	Nut, 5/16" ESNA	4
90	90-200012	Nut 1/4" Flare	4
91	90-4001	Washer, 5/16" Flat	3
92	96-512	Key Ring	1
93	95-0720085	Bracket, Wheel Brake	1
94	2-9903	Filter, Gas, Disposable (Honda Only)	1
95	2-1101	▲ Adapter, 3/8" x 1/4" (Honda Only, Engine Oil Drain)	1
96	2-010061	Bushing, Rubber, Nitrile	2
97	2-011700	Plate, Battery Box, Small	1

▲ Not Shown

HOSE & SPRAY GUN ASSEMBLY
ALL MODELS

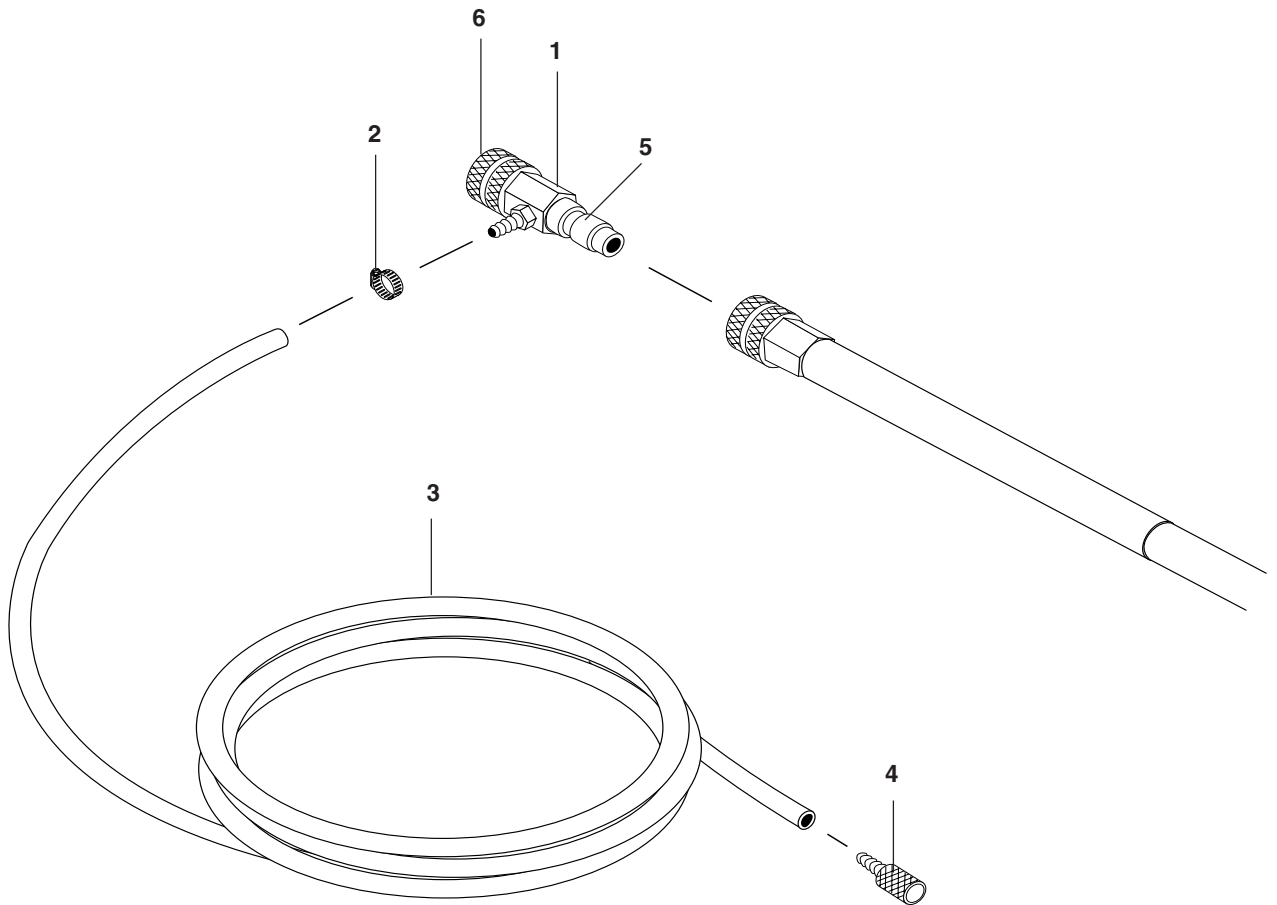


ITEM	PART NO.	DESCRIPTION	QTY
1	4-02043450F	Hose 50' x 3/8", 5800 PSI with Q/C	1
2	4-01219A	Spray Gun, Shut-Off with Wand, 5000 PSI	1
3	4-01404500	Nozzle, 1/4" Meg, 0045	1
	4-01404515	Nozzle, 1/4" Meg, 15045	1
	4-01404525	Nozzle, 1/4" Meg, 2504.5	1
	4-01404540	Nozzle, 1/4" Meg, 4004.5	1
	4-01465405	Nozzle, 1/4" Meg, 6540 Brass	1

ITEM	PART NO.	DESCRIPTION	QTY
4	2-20021	Coupler 3/8" Female, 5000 PSI	1
	2-01321	▲ Seal, 3/8" Snap Tite 5000 PSI	1
5	2-20023	Coupler 1/4" Female, 5000 PSI	1
	2-0132	▲ Seal, 1/4" Snap Tite 5000 PSI	1
6	2-20024	Nipple 1/4" Female, 5000 PSI	5

▲ Not Shown

DOWNSTREAM INJECTOR ASSEMBLY #4-011186



ITEM	PART NO.	DESCRIPTION	QTY
1	3-1208	Injector, Detergent	1
2	2-9000	Clamp Screw #4	1
3	4-02080000	Tube, 1/4" x 1/2" Clr Vinyl /Ft.	6
4	2-1904	Strainer, 1/4" Hose Barb	1
5	2-20022	Nipple 3/8" Female 5000 PSI	1
6	2-20021	Coupler 3/8" Female 5000 PSI	1
	2-01321	▲ Seal, 3/8" Coupler 5000 PSI	1

▲ Not Shown

TROUBLESHOOTING

PROBLEM	POSSIBLE CAUSE	SOLUTION
LOW OPERATING PRESSURE	Faulty pressure gauge	Install new gauge.
	Insufficient water supply	Use larger garden hose; clean filter washer at water inlet.
	Old, worn or incorrect spray nozzle	Match nozzle number to machine and/or replace with new nozzle.
	Plumbing or hose leak	Check plumbing system for leaks. Retape leaks with teflon tape.
	Faulty or misadjusted unloader valve (where applicable)	Adjust unloader for proper pressure. Install repair kit when needed.
	Worn packing in pump	Install new packing kit.
	Fouled or dirty inlet or discharge valves in pump	Clean inlet and discharge valves.
	Worn inlet or discharge valves	Replace with valve kit.
	Leaking pressure control valve (where applicable)	Rebuild or replace as needed.
	Slow engine RPM	Set engine speed per specifications (approximately 2800 RPM - 3400 RPM).
FLUCTUATING PRESSURE	Valves worn	Check and replace if necessary.
	Blockage in valve	Check and clean out if necessary.
	Pump sucking air	Check water supply and suction line for air seepage at joints.
	Worn piston packing	Check and replace if necessary.
PRESSURE LOW AFTER PERIOD OF NORMAL USE	Nozzle worn	Check and replace if necessary.
	Inlet or discharge valves blocked or worn	Check and clean or replace if necessary.
	Unloader valve seat worn	Check and replace if necessary.
PUMP NOISY	Air in suction line	Check water supply and connections on suction line.
	Broken or weak inlet or discharge valve springs	Check and replace if necessary.
	Foreign matter in valves	Check and clean if necessary.
	Worn bearings	Check and replace if necessary.
	Excessive temperature of liquid	Reduce to below 140°F (60°C)

TROUBLESHOOTING

PROBLEM	POSSIBLE CAUSES	SOLUTION
PRESENCE OF WATER IN PUMP OIL	Water sprayed at machine	Change oil. Direct spray away from machine.
	High humidity in air	Check and change oil twice as often.
	Piston packing worn. Oil seal worn	Check and replace if necessary.
ENGINE STRAINS UNDER LOAD	Engine governor misadjusted	Readjust governor on engine. Take to local engine representative for adjustment.
	Incorrect spray nozzle	Install proper nozzle size. (See serial plate for proper size.)
	Obstruction in spray nozzle	Remove obstruction.
	Misadjusted unloader valve	See section in Operators Manual on unloader valve adjustment.
	Engine low or out of oil	Check oil level.
	Pump low or out of oil	Check oil level.
	Obstruction in hose, fitting	Clean or replace hose, fitting.
ENGINE OPERATES FOR 15 MINUTES THEN STOPS	Not enough gas or engine oil	Fill tank with gas. Check oil level.
	Vapor lock developed by heat of day	Keep gas tank full to avoid vapor locking.
	Obstruction in fuel filter	Clean or replace fuel filter.
OIL SQUIRTS OUT OF OIL CAP ON PUMP	Pump over filled with oil	Maintain oil level at red dot on sight glass on rear of pump or at top of notch on dipstick (where applicable).
WATER DRIPPING FROM UNDER PUMP	Piston packing worn	Check and replace if necessary.
	O-Ring plunger retainer worn	Check and replace if necessary.
	Cracked piston	Check and replace if necessary.
OIL DRIPPING	Oil seal worn	Check and replace if necessary.
EXCESSIVE VIBRATION IN DELIVERY LINE	Irregular functioning of the valves	Check and replace if necessary.
WATER LEAKING FROM PUMP PORTECTOR	Spray gun closed with machine running 5 minutes or longer	Open spray gun or turn off machine.
	Excess water supply pressure	Place a pressure regulator at end of 50' garden hose.



LANDA LIMITED NEW PRODUCT WARRANTY PRESSURE WASHERS

WHAT THIS WARRANTY COVERS

All LANDA pressure washers are warranted by LANDA, INC. to the original purchaser to be free from defects in materials and workmanship under normal use, for the periods specified below. This Limited Warranty is subject to the exclusions shown below, is calculated from the date of the original purchase, and applies to the original components only. Any parts replaced under this warranty will assume the remainder of the part's warranty period.

FIVE YEAR PARTS AND ONE YEAR LABOR WARRANTY:

Components manufactured by LANDA, such as frames, handles, top and bottom wraps, float tanks, fuel tanks, belt guards, and heating coils. Internal components on the oil-end of all LANDA pressure washer pumps have a seven year warranty, five years for all other brands of pumps.

ONE YEAR MINIMUM ON PARTS AND ONE YEAR LABOR WARRANTY:

All other components, excluding normal wear items as described below, will be warranted for one year on parts and labor. Parts and labor warranty on these parts will be for one year regardless of the duration of the original component manufacturer's part warranty.

WARRANTY PROVIDED BY OTHER MANUFACTURERS:

Motors, generators, and engines, which are warranted by their respective manufacturers, are serviced through these manufacturers' local authorized service centers. LANDA cannot provide warranty on these items.

WHAT THIS WARRANTY DOES NOT COVER

This warranty does not cover the following items:

1. Normal wear items, such as nozzles, guns, discharge hoses, wands, quick couplers, seals, filters, gaskets, O-rings, packings, pistons, pump valve assemblies, strainers, belts, brushes, rupture disks, fuses, pump protectors.
2. Damage or malfunctions resulting from accidents, abuse, modifications, alterations, incorrect installation, improper servicing, failure to follow manufacturer's maintenance instructions, or use of the equipment beyond its stated usage specifications as contained in the operator's manual.
3. Damage due to freezing, chemical deterioration, scale build up, rust, corrosion, or thermal expansion.
4. Damage to components from fluctuations in electrical or water supply.
5. Normal maintenance service, including adjustments, fuel system cleaning, and clearing of obstructions.
6. Transportation to service center, field labor charges, or freight damage.

WHAT YOU MUST DO TO OBTAIN WARRANTY SERVICE

While not required for warranty service, we request that you register your LANDA pressure washer by returning the completed registration card. In order to obtain warranty service on items warranted by LANDA, you must return the product to your Authorized LANDA Dealer, freight prepaid, with proof of purchase, within the applicable warranty period. If the product is permanently installed, you must notify your Authorized LANDA Dealer of the defect. Your Authorized LANDA Dealer will file a claim with Landa, who must subsequently verify the defect. In most cases, the part must be returned to LANDA freight prepaid with the claim. For warranty service on components warranted by other manufacturer's, your Authorized LANDA Dealer can help you obtain warranty service through these manufacturers' local authorized service centers. If you are unable to resolve the warranty claim satisfactorily, write to LANDA at 4275 N.W. Pacific Rim Blvd., Camas, WA 98607, ATTN: Warranty Dept., detailing the nature of the defect, the name of the Authorized LANDA Dealer, and a copy of the purchase invoice.

LIMITATION OF LIABILITY

LANDA'S liability for special, incidental, or consequential damages is expressly disclaimed. In no event shall LANDA'S liability exceed the purchase price of the product in question. LANDA makes every effort to ensure that all illustrations and specifications are correct, however, these do not imply a warranty that the product is merchantable or fit for a particular purpose, or that the product will actually conform to the illustrations and specifications. **THE WARRANTY CONTAINED HEREIN IS IN LIEU OF ALL OTHER WARRANTIES, EXPRESS OR IMPLIED, INCLUDING ANY IMPLIED WARRANTY OF FITNESS FOR A PARTICULAR PURPOSE.** LANDA does not authorize any other party, including authorized LANDA Dealers, to make any representation or promise on behalf of LANDA, or to modify the terms, conditions, or limitations in any way. It is the buyer's responsibility to ensure that the installation and use of LANDA products conforms to local codes. While LANDA attempts to assure that its products meet national codes, it cannot be responsible for how the customer chooses to use or install the product.



4275 NW Pacific Rim Blvd. • Camas, WA 98607 USA

Form #96-6026 • Revised 1/02 • Printed in U.S.A. by Landa, Inc., Camas, WA 98607