

CONTENTS

Introduction	1
Machine Safety	1, 3
Component Identification	2
Pre-Operation Check	3
Set-Up Procedures	3
Operating Instructions	3
General Washing Techniques	3
Shut Down Procedures	3, 4
How To Use the Chemical Injector	4
Troubleshooting	5, 6
Exploded View, Left Side	7
Exploded View, Right Side	8
Parts Breakdown	9
General Pump TT9061GF-B	10
General Pump TT9061GF-B Parts List	11
Unloader 5-3201	12
Hose & Gun Assembly	13
Shut-off Gun #4-01212	14
Downstream Injector Assembly #4-011183	15
Specifications	16
Oil Change Record	17
Maintenance	17
Warranty	18

INTRODUCTION

Thank you for purchasing a Landa Pressure Washer. This manual covers the operation and maintenance of the PCS2-15421 washer. All information in this manual is based on the latest product information available at the time of printing.

Landa, Inc. reserves the right to make changes at any time without incurring any obligation.

This manual should be considered a permanent part of the machine and should remain with it if unit is resold.

When ordering parts, please specify model and serial number.

The PCS Series was designed for residential duty use of 1 hour per day, 5 days per week.

Owner/User Responsibility:

The owner and/or user must have an understanding of the manufacturer's operating instructions and warnings before using this Landa pressure washer. Warning information should be emphasized and understood. If the operator is not fluent in English, the manufacturer's instructions and warnings shall be read to and discussed with the operator in the operator's native language by the purchaser/owner, making sure that the operator comprehends its contents.

Owner and/or user must study and maintain for future reference the manufacturers' instructions.

MACHINE SAFETY



WARNING

CAUTION: To reduce the risk of injury, read operating instructions carefully before using.

1. Read the owner's manual thoroughly. Failure to follow instructions could cause malfunction of the unit and result in death, serious bodily injury and/or property damage.
2. All installations must comply with local codes. Contact your electrician, plumber, utility company or the selling distributor for specific details.

CAUTION: Risk of asphyxiation. Use this product only in a well ventilated area.



The engine exhaust from this product contains chemicals known to the State of California to cause cancer, birth defects, or other reproductive harm.

3. Avoid installing units in small areas or near exhaust fans. Exhaust contains poisonous carbon monoxide gas; exposure may cause loss of consciousness and may lead to death. It also contains chemicals known, in certain quantities, to cause cancer, birth defects, or other reproductive harm.



WARNING: FLAMMABLE LIQUIDS CAN CREATE FUMES WHICH CAN IGNITE CAUSING PROPERTY DAMAGE OR SEVERE INJURY.

CAUTION: Risk of Fire. Do not add fuel when the product is operating.

4. Allow engine to cool for 2 minutes before refueling. If any fuel is spilled, make sure the area is dry before testing the spark plug or starting the engine. (Fire and/or explosion may occur if this is not done.)

Gasoline engines on mobile or portable equipment shall be refueled:

- (a) outdoors;
- (b) with the engine on the equipment stopped;
- (c) with no source of ignition, within 10 feet of the dispensing point; and
- (d) with an allowance made for expansion of the fuel should the equipment be exposed to a higher ambient temperature.

In an overfilling situation, additional precautions are necessary to ensure that the situation is handled in a safe manner.

WARNING: Risk of explosion — do not spray flammable liquids.

5. Do not place machine near flammable objects as the engine is hot.



WARNING: HIGH PRESSURE STREAM OF FLUID THAT THIS EQUIPMENT CAN PRODUCE CAN PIERCE SKIN AND ITS UNDERLYING TISSUES, LEADING TO SERIOUS INJURY AND POSSIBLE AMPUTATION

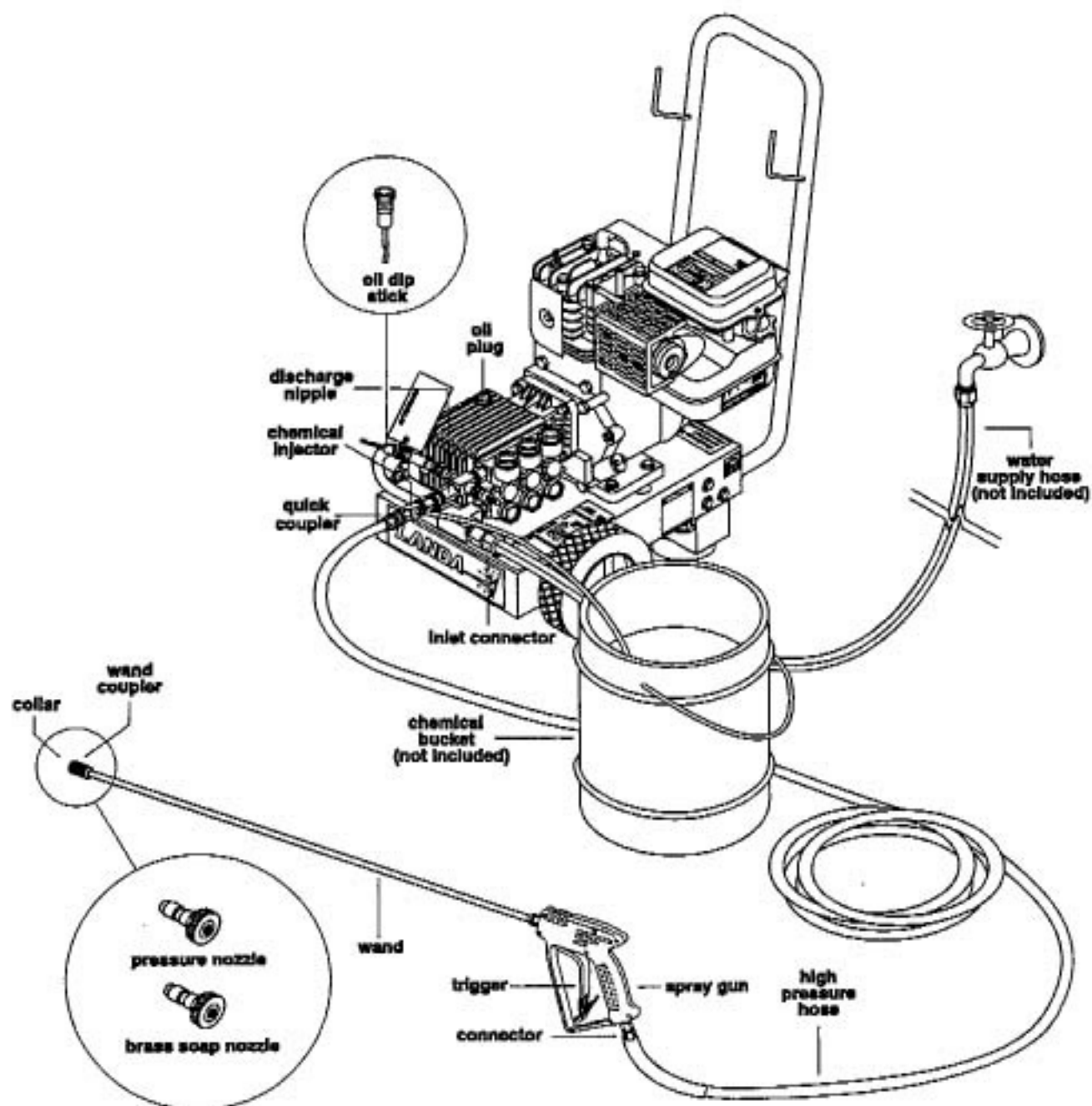
6. High pressure developed by these units will cause personal injury or equipment damage. Use caution when operating. Do not direct discharge stream at people, or severe injury or death will result.



WARNING: HIGH PRESSURE SPRAY CAN CAUSE PAINT CHIPS OR OTHER PARTICLES TO BECOME AIRBORNE AND FLY AT HIGH SPEEDS

7. Never make adjustments on machine while it is in operation.
8. Eye safety devices and foot protection must be worn when using this equipment.

COMPONENT IDENTIFICATION



9. Units with shut-off gun should not be operated with the gun in the off position for extensive periods of time as this may cause damage to the pump.
10. The best insurance against an accident is precaution and knowledge of the machine.
11. Landa will not be liable for any changes made to our standard units, or any components not purchased from Landa.



WARNING: KEEP WATER SPRAY, WAND, AND HIGH PRESSURE HOSE AWAY FROM ELECTRIC WIRING OR FATAL ELECTRIC SHOCK MAY RESULT.

12. Read engine manufacturer's safety instructions provided.
 13. Never run pump dry or leave gun closed longer than 5 minutes.
 14. Do not allow children to operate the pressure washer at any time.
6. Check oil level on sight glass on side of pump. Oil should be visible one half way up sight glass (30W non-detergent).
 7. Fill engine gasoline tank and check engine oil.

OPERATING INSTRUCTIONS

1. Read engine warning and operating instructions.
2. Turn on water at faucet and pull trigger on spray gun allowing water to flow until all air has discharged from system. Check for water leaks; tighten as needed.
3. Pull wand coupler collar back and insert pressure nozzle into coupler then secure by pushing collar forward.
4. Read engine manual, turn on gas valve, choke, turn switch to start position and pull rope to start. Turn off choke.

CAUTION: Small engines may kick back. Do not hold pull rope tightly in hand.

5. With spray nozzle pointed away from you or anybody else, press trigger on spray gun to obtain pressurized spray.

PRE-OPERATION CHECK

- ☐ Pump oil (SAE 30W non-detergent oil, General)
- ☐ Cold water supply (6 gpm • 5/8" • 20 psi)
- ☐ Hose, wand, nozzle (nozzle size per serial plate)
- ☐ Water filter (intact, non restrictive)
- ☐ Fuel (unleaded 86 or higher octane)
- ☐ Engine oil (SAE 10W40)

SET-UP PROCEDURES

1. Attach a 5/8" garden hose to inlet connector. Minimum flow should be 5 gpm.
2. Attach high pressure hose to discharge nipple using quick coupler. Lock coupler securely into place by pulling back coupler collar and inserting it onto discharge nipple, then pushing collar forward to lock in place. A chemical injector can be inserted between the hose and the discharge nipple. (See Page 4)
3. Attach wand to spray gun using teflon tape on threads to prevent leakage.
4. Attach connector on discharge hose to spray gun using teflon tape on threads.
5. Remove oil plug on top of pressure washer pump and replace with oil dipstick supplied.

GENERAL WASHING TECHNIQUES

1. Hold spray nozzle approximately one foot from the surface being cleaned. Spray at an angle to get under the material and lift it off.
2. When washing large objects, use optional chemical injector to apply detergent. Start washing from the bottom and work up. Better chemical economy and faster results will be obtained by allowing the chemical to set 5-10 minutes. After washing, rinse from the top down.
3. Cleaning heavy dirt or material away with a hard stream of clear water is recommended before using a cleaning agent.

SHUT DOWN PROCEDURES

1. Rinse all lines (and injector) with clean water, to remove any soap residue.

2. Turn engine off.
3. Turn off water supply.
4. Open shut off gun to relieve remaining pressure.



WARNING: SOME CHEMICALS OR DETERGENTS MAY BE HARMFUL IF INHALED OR INGESTED, CAUSING SEVERE NAUSEA, FAINTING OR POISONING. THE HARMFUL ELEMENTS MAY CAUSE PROPERTY DAMAGE OR SEVERE INJURY.

5. Remove water supply hose.
6. In freezing conditions, disconnect water supply and open shut off gun to allow water to drain, then turn motor off.

CAUTION: Do not allow pump to run longer than 5 minutes without water. Disconnect all hoses to allow water to drain.

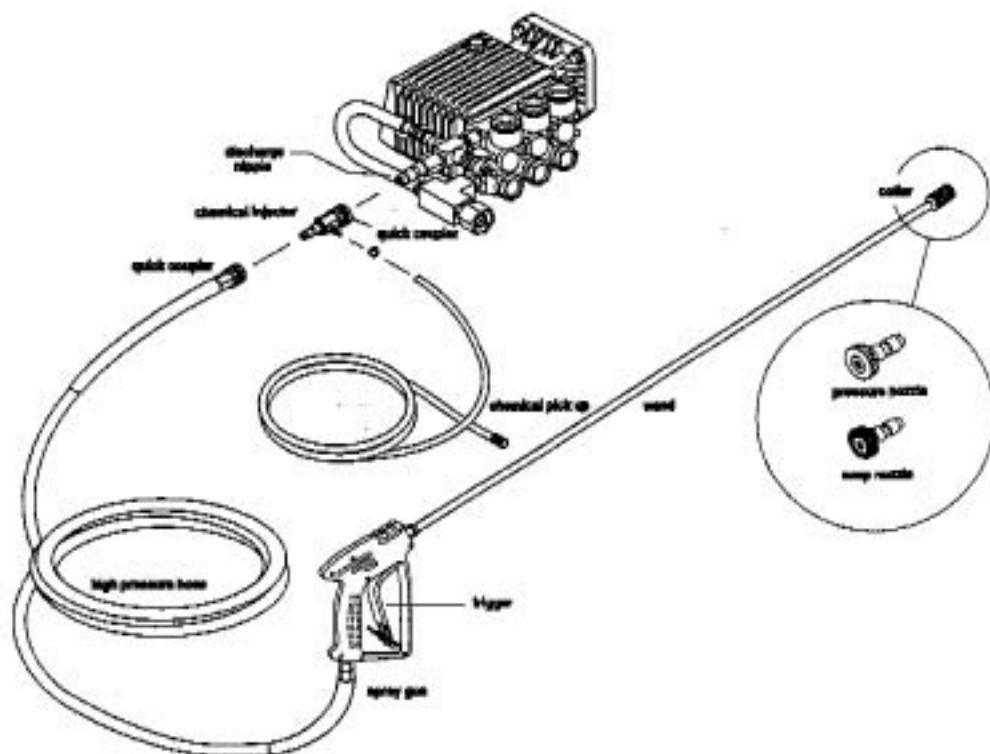
HOW TO USE THE CHEMICAL INJECTOR

The machine can siphon and mix detergents with the use of Landa's chemical injector kit.

1. Pull injector quick coupler collar back and secure on discharge nipple. Injector valve body arrow should point in direction of flow.
2. Connect high pressure hose to injector nipple securing quick coupler.
3. Start machine as outlined in Operating Instructions.
4. Place chemical pick-up tube into container of chemical solution.
5. Install the brass soap nozzle provided with the injector into the quick coupler of the wand.
6. Open trigger gun. Water chemical ratio is approximately 15 to 1.
7. When you finish washing, rinse by simply releasing the trigger gun, removing the soap nozzle, and replacing the pressure nozzle back into quick coupler.

NOTE: The chemical injector will not siphon with the high pressure nozzle at the end of the wand.

8. For clean up, place chemical pick-up tube into container of clear water and follow steps 5 and 6 to prevent chemical deposits from damaging the injector.



TROUBLESHOOTING

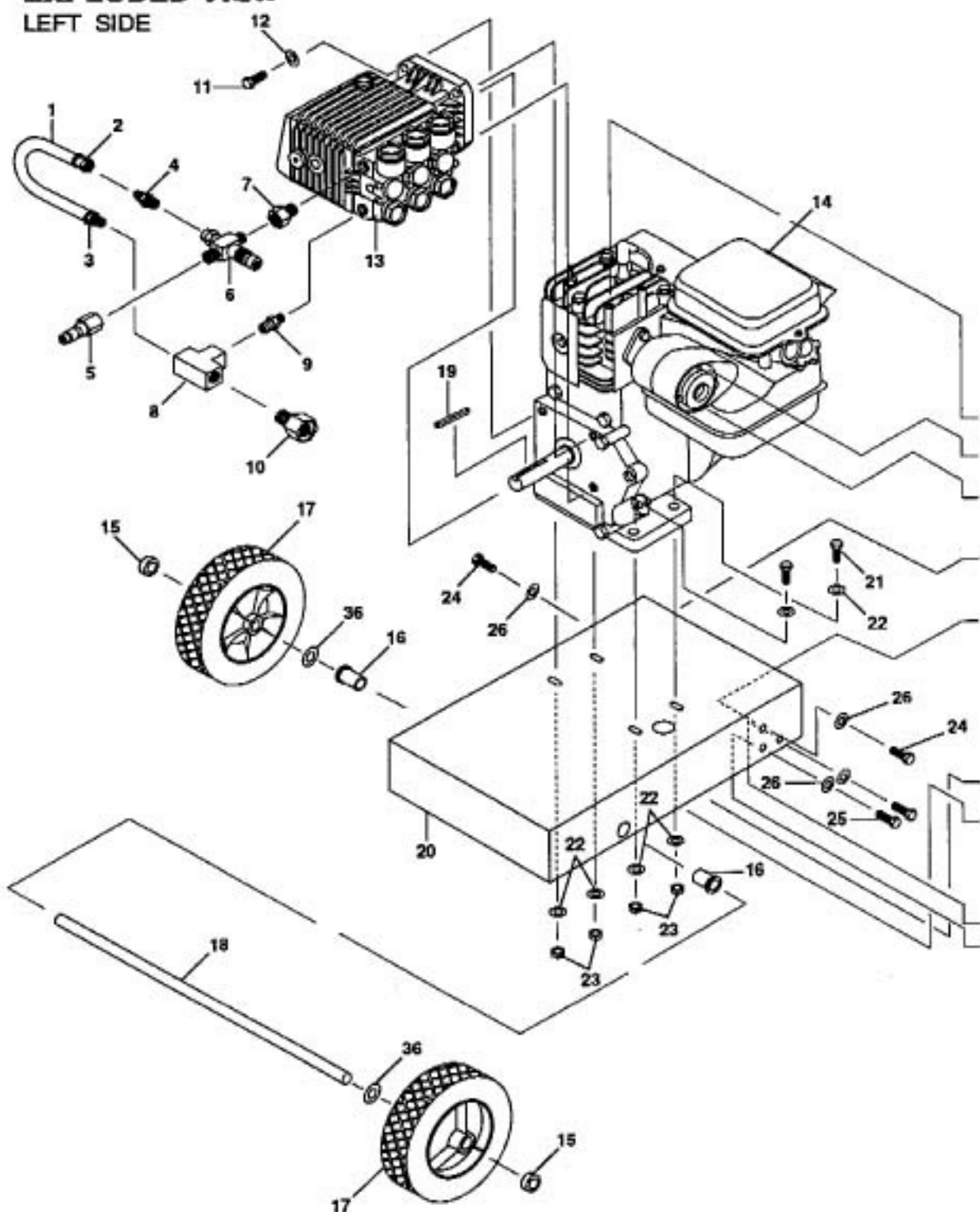
PROBLEM	POSSIBLE CAUSE	SOLUTION
LOW OPERATING PRESSURE	Faulty pressure gauge	Install new gauge
	Insufficient water supply	Use larger garden hose; clean filter washer at water inlet
	Old, worn or incorrect spray nozzle	Match nozzle number to machine and/or replace with new nozzle
	Plumbing or hose leak	Check plumbing system for leaks. Retape leaks with teflon tape
	Faulty or misadjusted unloader valve (where applicable)	Adjust unloader for proper pressure. Install repair kit when needed
	Worn packing in pump	Install new packing kit
	Fouled or dirty inlet or discharge valves in pump	Clean inlet and discharge valves
	Worn inlet or discharge valves	Replace with valve kit
	Leaking pressure control valve (where applicable)	Rebuild or replace as needed
	Slow engine RPM	Set engine speed per specifications (approximately 2800 RPM - 3400 RPM)
FLUCTUATING PRESSURE	Valves worn	Check and replace if necessary
	Blockage in valve	Check and clean out if necessary
	Pump sucking air	Check water supply and suction line for air seepage at joints
	Worn piston packing	Check and replace if necessary
PRESSURE LOW AFTER PERIOD OF NORMAL USE	Nozzle worn	Check and replace if necessary
	Inlet or discharge valves blocked or worn	Check and clean or replace if necessary
	Unloader valve seat worn	Check and replace if necessary
PUMP NOISY	Air in suction line	Check water supply and connections on suction line
	Broken or weak inlet or discharge valve springs	Check and replace if necessary
	Foreign matter in valves	Check and clean if necessary
	Worn bearings	Check and replace if necessary
	Excessive temperature of liquid	Reduce to below 75°C (180°F)

TROUBLESHOOTING

PROBLEM	POSSIBLE CAUSE	SOLUTION
PRESENCE OF WATER IN PUMP OIL	Water sprayed at unit	Change oil. Direct spray away from unit
	High humidity in air	Check and change oil twice as often
	Piston packing worn. Oil seal worn	Check and replace if necessary
ENGINE STRAINS UNDER LOAD	Engine governor misadjusted	Readjust governor on engine. Take to local engine representative for adjustment.
	Incorrect spray nozzle	Install proper nozzle size. (See serial plate for proper size)
	Obstruction in spray nozzle	Remove obstruction
	Misadjusted unloader valve	See section in Operators Manual on unloader valve adjustment
	Engine low or out of oil	Check oil level
	Pump low or out of oil	Check oil level
	Obstruction in hose, fitting	Clean or replace hose, fitting
OIL SQUIRTS OUT OF OIL CAP ON PUMP	Pump over filled with oil	Maintain oil level at red dot on sight glass at rear of pump or at top of notch on dipstick (where applicable)
ENGINE OPERATES FOR 15 MIN. THEN STOPS	Not enough gas or engine oil	Fill tank with gas. Check oil level
	Vapor lock developed by heat of day	Keep gas tank full to avoid vapor locking
	Obstruction in fuel filter	Clean or replace fuel filter
WATER DRIPPING FROM UNDER PUMP	Piston packing worn	Check and replace if necessary
	O-Ring plunger retainer worn	Check and replace if necessary
	Cracked piston	Check and replace if necessary
OIL DRIPPING	Oil seal worn	Check and replace if necessary
EXCESSIVE VIBRATION IN DELIVERY LINE	Irregular functioning of the valves	Check and replace if necessary

PCS2-15421 EXPLODED VIEW

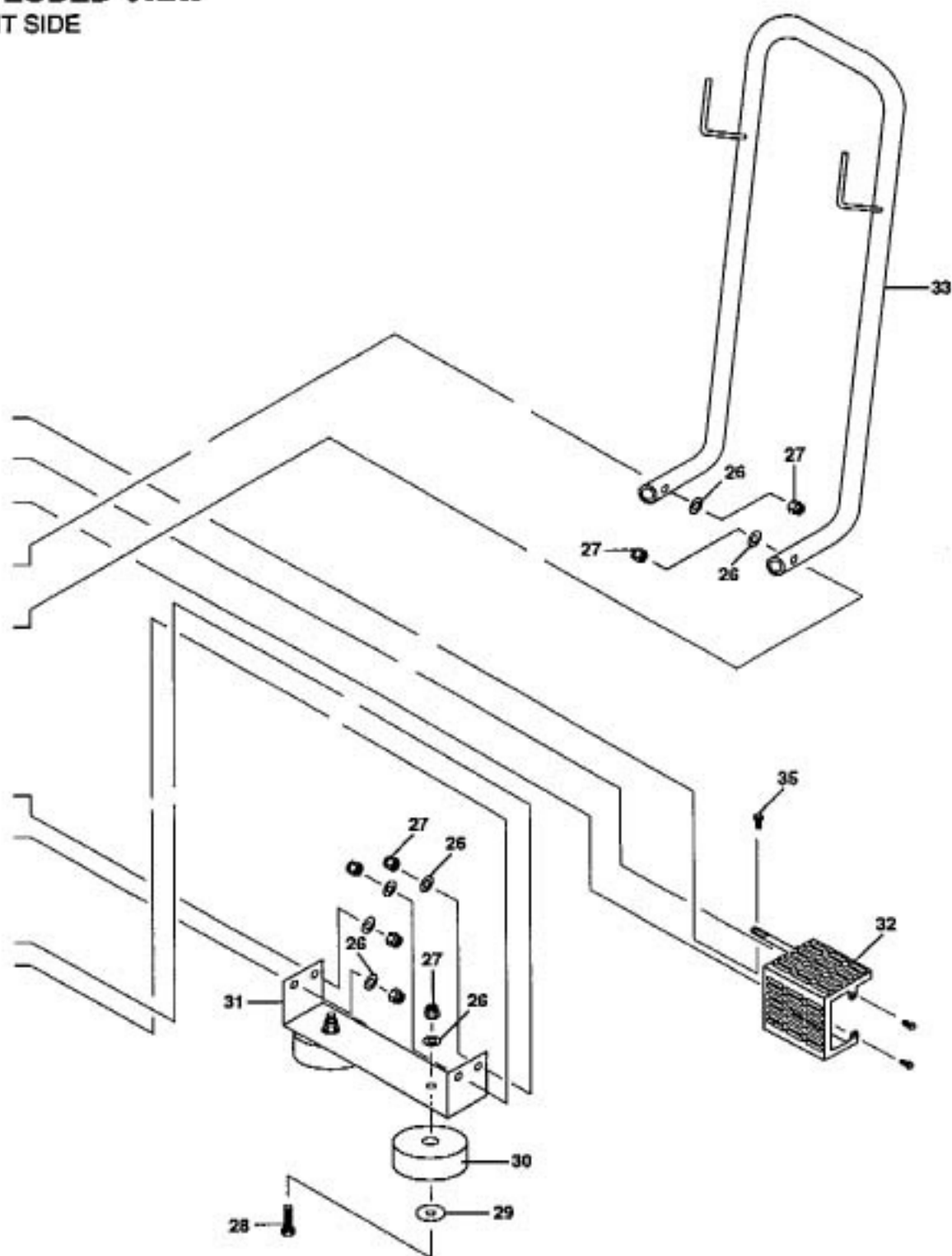
LEFT SIDE



PCS2-15421

EXPLODED VIEW

RIGHT SIDE



PCS2-15421

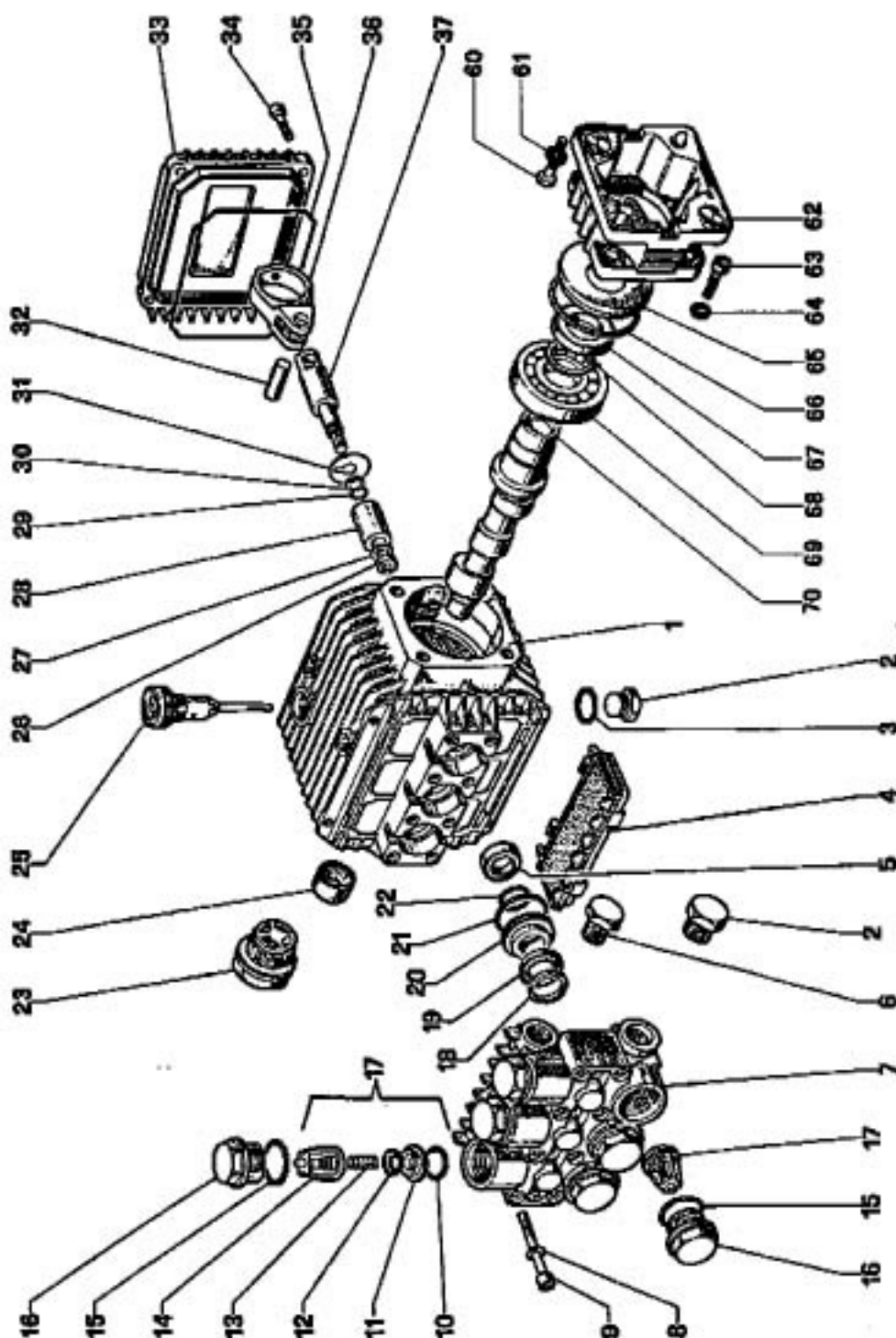
PARTS LIST

ITEM	PART NO.	DESCRIPTION	QTY
1	4-02110000	Hose, 1/2", Push-on /ft.	1.1620
2	2-1105	Swivel, 1/2" JIC Fem, Push-on	1
3	2-1107	Push-on, 1/2" Male Pipe	1
4	2-1051	Nipple, 1/2" JIC x 1/4" Pipe	1
5	2-2006	Nipple, 3/8" x 3/8" NPT ST Fem.	1
6	5-3201	Unloader, SMC	1
7	2-1101	Adapter, 3/8" x 1/4"	1
8	2-1032	Tee, 1/2" Female, Pipe	1
9	2-1058	Nipple, 1/2" Pipe x 3/8" Pipe	1
10	2-10942	Swivel, 1/2" MP x 3/4" GHF w/Strainer	1
11	1-99274000	Screw	4
12	1-96701400	Washer	4
13	5-23000	Pump, General	1
14	5-03001	Engine, Briggs, 1/C 3.5 H.P.	1
15	90-20039	Collar, 1/2" Bore Shaft, ZN	2
16	2-01413	Bushing, 1/2" Axle, 1/2" x 5/8" x 3/4" w/Flange	2
17	4-0305	Wheel & Tire, 8" x 1.75", Semi-Pneumatic	2
18	95-071010180	Axle, 14", PCS	1
19	76-91539	Key, Drive Briggs & Stratton	1
20	95-07101152	Frame, PCS 2-1500, Welded	1
21	90-1009	Bolt, 5/16" x 1-1/2", NC HH	4
22	90-4001	Washer, 5/16", Flat, SAE	8
23	90-2001	Nut, 5/16", ESNA, NC	4
24	90-1020	Bolt, 3/8" x 2", NC HH	2
25	90-1017	Bolt, 3/8 x 1-1/4", NC HH	4
26	90-4002	Washer, 3/8", SAE, Flat	14
27	90-2002	Nut, 3/8", ESNA, NC	8
28	90-1016	Bolt, 3/8" x 1" NC HH	2
29	90-4013	Washer, 3/8" x 1-1/16" x 12 ga.	2
30	2-0104	Pad, Hard Rubber	2
31	95-07101151	Bracket, Foot PCS2-1500	1
32	95-07101150	Guard, Muffler, 3.5 HP Briggs	1
33	95-07101143	Handle, PG, PC Black w/Single Mount Holes	1
34	2-0103	Δ Grommet, 1/8", Rubber	2
35	90-19994	Screw, 10/32" x 3/8"	1
36	90-4004	Washer, 1/2 Flat SAE	2

*Not Shown

PUMP TT9061GF-B #5-23000

PCS2-15421



PUMP TT9061GF-B #5-23000 PCS2-15421 • PARTS LIST

ITEM	PART NO.	DESCRIPTION	QTY
1	1-51010622	Crankcase	1
2	1-98210000	Plug	2
3	1-90383300	O-Ring	1
4	1-51209102	Protector	1
5	1-90156500	Oil Seal (Kit #1-0083)	3
6	1-98204100	Plug	1
7	1-51120022	Manifold, Alum.	1
	1-51120044	Manifold, Brass	1
8	1-96693800	Washer	8
9	1-99194300	Screw	8
10	1-90384100	O-Ring (Kit #1-0001)	6
11	1-36200366	Valve Seat (Kit #1-0001)	6
12	1-36200176	Valve Plate (Kit #1-0001)	6
13	1-94737600	Spring (Kit #1-0001)	6
14	1-36200251	Valve Cage (Kit #1-0001)	6
15	1-90384700	O-Ring (Kit #1-0084)	6
16	1-98221800	Valve Cap (Kit #1-0084)	6
17	1-36703201	Valve Assembly (Kit #1-0001)	6
18	1-51100051	Head Ring (Kits # 1-0096, 1-0097)	3
19	1-90262000	Packing (Kits #1-0096, 1-0097)	3
20	1-51080070	Packing Retainer (Kits #1-0086, 1-0096)	3
21	1-90360400	O-Ring (Kits #1-0086, 1-0096, 1-0097)	3
22	1-90383500	O-Ring (Kits #1-0086, 1-0096, 1-0097)	3
23	1-97596800	Sight Gauge	1
24	1-91801400	Needle Bearing	1

ITEM	PART NO.	DESCRIPTION	QTY
25	1-98210300	Oil Dip Stick	1
26	1-92221600	Nut	3
27	1-96700800	Washer	3
28	1-51040009	Piston (15 mm)	3
29	1-90357200	O-Ring	3
30	1-90502200	Back Up Ring	3
31	1-96707000	Flinger Washer	3
32	1-97731000	Connecting Rod Pin	3
33	1-51160022	Crankcase Cover	1
34	1-99186700	Screw	4
35	1-90391700	Cover O-Ring	1
36	1-51030022	Connecting Rod End	3
37	1-51050056	Piston Rod	3
49	1-99273000	Screw	4
50	1-96710400	Washer	4
51	1-10034622	Flange	1
52	1-99186700	Screw	4
53	1-96693800	Washer	4
54	1-50211551	Spacer	1
55	1-90409700	O-Ring	1
56	1-90164400	Oil Seal	1
57	1-90066700	Snap Ring	1
58	1-91832800	Bearing	1
59	1-51021035	Crankshaft	1

TORQUE SPECS

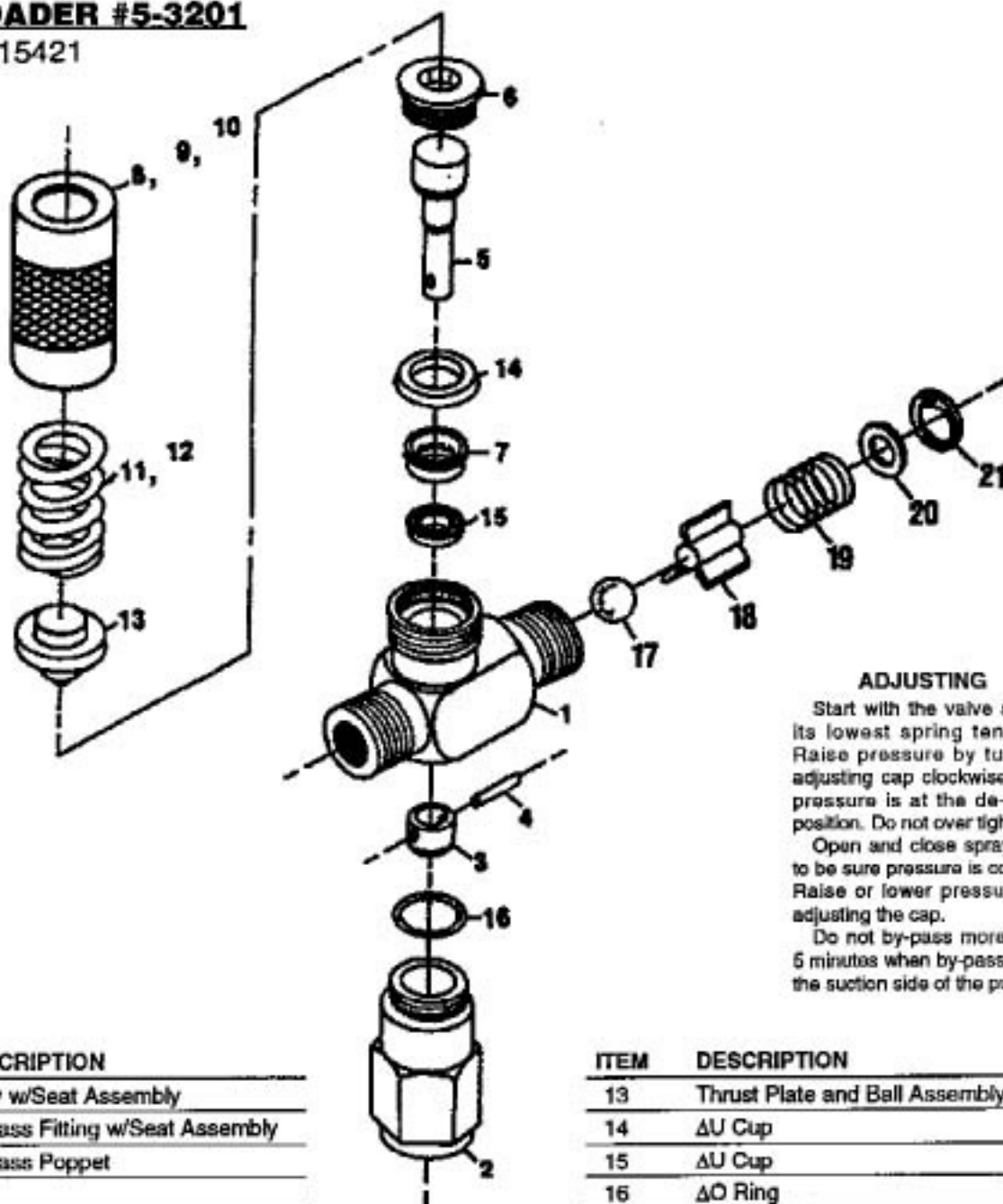
Position	FL/lbs	Position	FL/lbs
2	29.4	34	7.3
6	14.7	38	22.1
9	8.8	40	7.3
16	33.1	49	14.7
23	13.2	52	7.3
26	11.0		

KITS AVAILABLE

KIT NO.	1-0001	1-0083	1-0084	1-0086	1-0096	1-0097
DESCRIPTION	VALVE ASSEMBLY	PISTON OIL SEAL	VALVE CAP ASSEMBLY	PACKING RETAINER	PACKING ASSEMBLY	PACKING
ITEM NO.'S INCLUDED IN KIT	10, 11, 12, 13, 14, (17)	5	15, 16	20, 21, 22	18, 19, 20, 21, 22	18, 19 21, 22
NUMBER OF ASSEMBLIES IN KIT	6	3	6	3	1	3
NUMBER OF CYLINDERS KIT WILL SERVICE	3	3	3	3	1	3

UNLOADER #5-3201

PCS2-15421



ADJUSTING

Start with the valve set at its lowest spring tension. Raise pressure by turning adjusting cap clockwise until pressure is at the desired position. Do not over tighten.

Open and close spray gun to be sure pressure is correct. Raise or lower pressure by adjusting the cap.

Do not by-pass more than 5 minutes when by-passing to the suction side of the pump.

ITEM	DESCRIPTION
1	Body w/Seat Assembly
2	By-pass Fitting w/Seat Assembly
3	By-pass Poppet
4	Pin
5	Piston
6	Stop
7	Spacer
8	Adjusting Nut 500 psi
9	Adjusting Nut 1000 psi
10	Adjusting Nut 1500 psi
11	Spring 500 & 1000 psi
12	Spring 1500psi

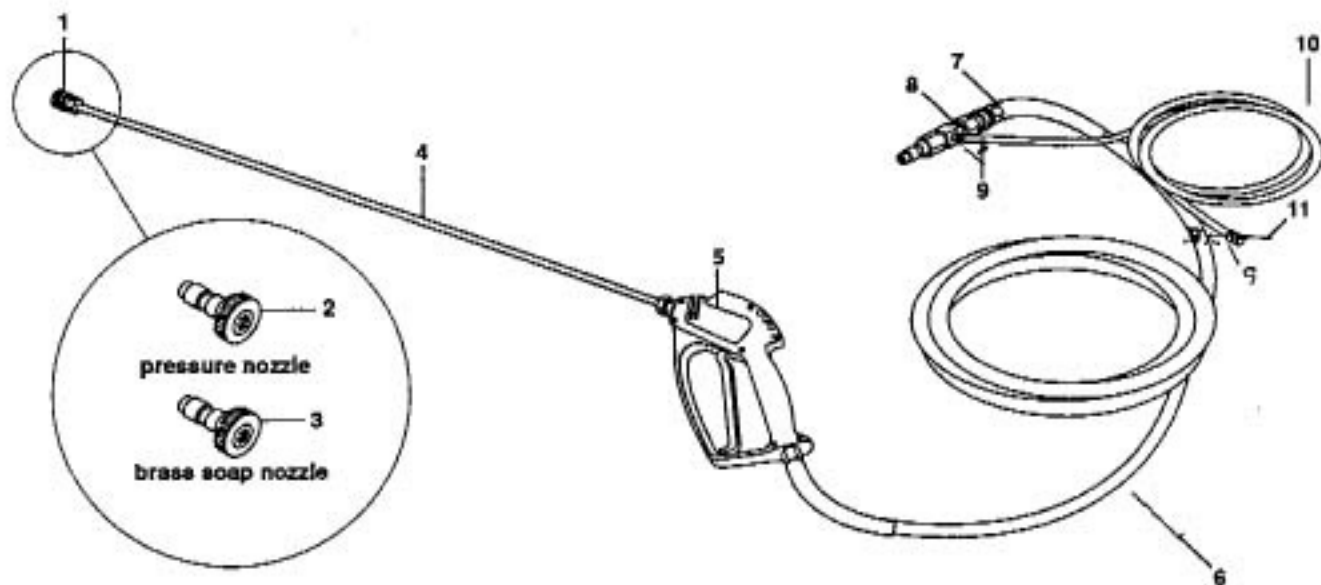
ITEM	DESCRIPTION
13	Thrust Plate and Ball Assembly
14	ΔU Cup
15	ΔU Cup
16	ΔO Ring
17	Ball
18	Guide
19	Spring
20	Washer
21	Spring Retainer Ring

REPAIR KIT #8-0032090

Δ Parts available in Repair Kit Only

HOSE & GUN ASSEMBLY

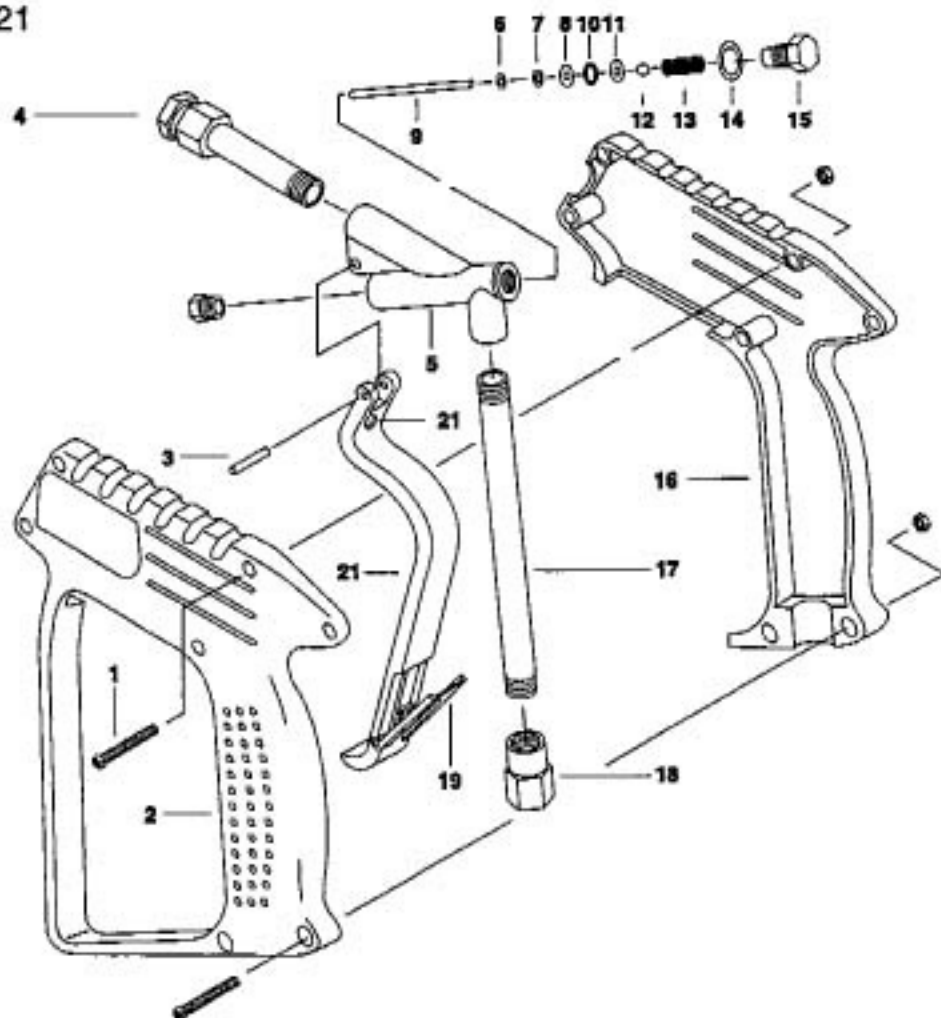
PCS2-15421



ITEM	PART NO.	DESCRIPTION	QTY
1	2-2000	Coupler, 1/4" Female, Brass	1
	2-0119	Δ O-ring, Coupler Quick Small Hi-HT x 1/4"	1
2	4-12803015	Nozzle, SAOCMEG 1503, Yellow	1
3	4-16540	Nozzle, Compl. QCEM-6540 with Black Nylon	1
4	4-011053	Wand, SS 31.4" YL35S	1
5	4-01212	Gun, Shut-Off YG2600L	1
6	4-02013425	Hose Only, Dis, 100R1, 25' x 1/4"	1
7	2-2002	Coupler, 3/8" Female, Brass	1
	2-0121	Δ O-Ring, Coupler Quick Large Hi-HT	1
8	4-011183	Downstream Injector Assy, Non Adj. #2	1
9	2-9000	Clamp, Screw, #4	2
10	4-02080000	Tube, 1/4" x 1/2", C/R Vinyl /ft.	6
11	2-1907	Strainer, 1/4" Hose Barb	1

Δ Not Shown

SHUT-OFF GUN #4-01211 PCS2-15421



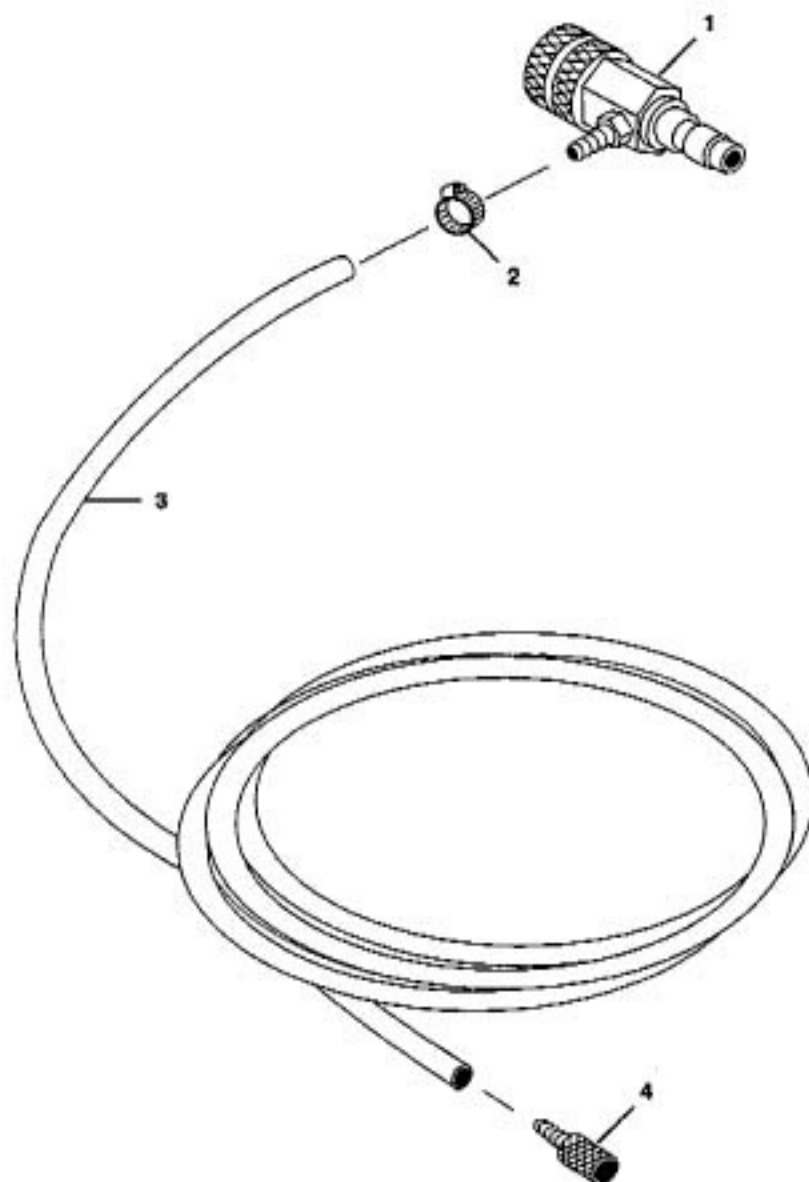
ITEM	PART NO.	DESCRIPTION	QTY
1	1-16307700	Screw	7
2	1-30250788	Housing, Left, Plastic, Black	1
3	1-30251731	Pin	1
4	1-30200635	Outlet Fitting 1/4" Female	1
5	1-30251835	Housing	1
6	1-10401800	Δ O-Ring, Back-up, Teflon, Bronze	2
7	1-10316500	Δ O-Ring, .112 x .103, Viton	1
8	1-14355900	Washer, M3, Brass	1
9	1-30251651	Δ Pin, SS	1
10	1-10305901	Δ O-Ring, Buna-N	1
11	1-30201251	Δ Seat, SS	1

ITEM	PART NO.	DESCRIPTION	QTY
12	1-14744310	Δ Ball, 11/32", SS	1
13	1-30250451	Spring, SS	1
14	1-14404100	O-Ring, Buna-N	1
15	1-30000631	Plug, M16 x 2 mm, Brass	1
16	1-30250284	Housing, Right, Plastic, Black	1
17	1-30101136	Tube, 1/8", SS	1
18	1-30252331	Nipple, 3/8" - BSP-F, Brass	1
19	1-30151084	Latch, Safety, Black	1
20	1-30250684	Trigger, Black	1
21	1-30100851	Striker, SS	1

Δ Repair Kit 1-KITG4001

DOWNSTREAM INJECTOR ASSEMBLY #4-011183

Assy #1 • PCS2-15421



ITEM	PART NO.	DESCRIPTION	QTY
1	3-1202	Injector, Chem, Non Adjust, #1	1
	3-12021	Injector, Chem, Non Adjust, #2	1
2	2-9000	Clamp, Screw, #4	1
3	4-02080000	Tube, 1/4" x 1/2", Clear Vinyl /ft.	6
4	2-1907	Strainer, 1/4", Hose Barb	1

PCS SERIES PRESSURE WASHER OPERATOR'S MANUAL 16

SPECIFICATIONS

MODEL		PCS2-15421
DISCHARGE	GPM	1.8
OPERATING PRESSURE	PSI	1500
ENGINE		Briggs
	HP	3.5
FUEL		Regular/Unleaded Gasoline
FUEL TANK CAPACITY	Gal.	.65
STARTING		Recoil Start
PUMP		Tri-Plunger, Oil Bath
PAINT	Applied Electrostatically	Epoxy Powder Coat
HOSE		1/4" I.D. x 25' Single Braid
GUN		Insulated, Shut-Off
NOZZLES	Hardened Stainless Steel	1503
WHEELS		8" Solid Rubber
LENGTH/WIDTH/HEIGHT		30"/19"/28"
NET WEIGHT	lbs.	71

Note: There may be slight variances in gallonage and pressures due to variances allowed by manufacturers of our machine components. We attempt to keep our machines performance $\pm 5\%$ of listed specifications

OIL CHANGE RECORD

Check pump oil level before first use of your new Power Washer. Change pump oil after first 50 hours and every 3 months or 500 hours thereafter. Use SAE 30 weight oil, non-detergent.

Date Oil Changed Month/Day/Year	No. of Operating Hours Since Last Oil Change	Brand Name and Type of Oil (see above)

MAINTENANCE

Maintenance Operation	Every 8 Hrs or daily	25 Hrs or weekly	50 Hrs or monthly	100 Hrs or yearly	Yearly
Check oil Pump		•			
Engine	•				
Change oil Pump					•
Engine			•		
Air Cleaner	Check		Clean		
Spark Plug				•	
Check valve clearance					•
Fuel tank filter				•	
Water filter/clean	Check				•

LANDA LIMITED NEW PRODUCT WARRANTY PRESSURE WASHERS (Effective January 1, 1996)

WHAT THIS WARRANTY COVERS

All LANDA pressure washers are warranted by LANDA, INC. to the original purchaser to be free from defects in materials and workmanship under normal use, for the periods specified below. This Limited Warranty is subject to the exclusions shown below, is calculated from the date of the original purchase, and applies to the original components only. Any parts replaced under this warranty will assume the remainder of the parts warranty period.

LIFETIME PARTS AND ONE YEAR LABOR WARRANTY:

Brass manifolds on all pressure washer pumps carry an unconditional warranty.

FIVE YEAR PARTS AND ONE YEAR LABOR WARRANTY:

Components manufactured by Landa, such as frames, handles, oil wraps, float tanks, fuel tanks, belt guards, and coils. Schedule 40 coils will be prorated at the rate of 25% per year after two years. Internal components on the oil-end of all pressure washer pumps.

ONE YEAR MINIMUM ON PARTS AND ONE YEAR LABOR WARRANTY:

All other components, excluding normal wear items as described below, will be warranted for the duration specified by the original component manufacturer, with a one year minimum. Labor warranty on these parts will be for one year regardless of the duration of the original component manufacturer's part warranty.

WARRANTY PROVIDED BY OTHER MANUFACTURERS:

Motors, generators, and engines, which are warranted by their respective manufacturers, are serviced through these manufacturers' local authorized service centers. LANDA cannot provide warranty on these items.

NON-WARRANTY REPLACEMENT PARTS:

These parts, excluding normal wear items as described below, will be warranted for the duration specified by the original component manufacturer. There will be no labor warranty on these parts.

WHAT THIS WARRANTY DOES NOT COVER

This warranty does not cover the following items:

1. Normal wear items, such as nozzles, guns, discharge hoses, wands, quick couplers, seals, filters, gaskets, O-rings, packings, pistons, valve assemblies, strainers, belts, brushes, etc.
2. Damage or malfunctions resulting from accidents, abuse, modifications, alterations, incorrect installation, improper servicing, failure to follow manufacturer's maintenance instructions, or use of the equipment beyond its stated usage specifications as contained in the operator's manual.
3. Damage due to freezing, chemical deterioration, scale build up, rust, corrosion, or thermal expansion.
4. Damage to components from fluctuations in electrical or water supply.
5. Normal maintenance service, including adjustments, fuel system cleaning, and clearing of obstructions.
6. Transportation to service center, field labor charges, or freight damage.
7. Labor warranty is specifically excluded for all machines used for rental purposes.

WHAT YOU MUST DO TO OBTAIN WARRANTY SERVICE

While not required for warranty service, we request that you register your LANDA pressure washer by returning the completed registration card. In order to obtain warranty service on items warranted by LANDA, you must return the product to your Authorized LANDA Dealer, freight prepaid, with proof of purchase, within the applicable warranty period. If the product is permanently installed, you must notify your Authorized LANDA Dealer of the defect. Your Authorized LANDA Dealer will file a claim with Landa, which must subsequently verify the defect. In most cases, the part must be returned to LANDA freight prepaid with the claim. For warranty service on components warranted by other manufacturer's, your Authorized LANDA Dealer can help you obtain warranty service through these manufacturers' local authorized service centers. If you are unable to resolve the warranty claim satisfactorily, write to LANDA at 13705 NE Airport Way, Portland, OR 97230, ATT: Warranty Dept., detailing the nature of the defect, the name of the Authorized LANDA Dealer, and a copy of the purchase invoice.

LIMITATION OF LIABILITY

LANDA'S liability for special, incidental, or consequential damages is expressly disclaimed. In no event shall LANDA'S liability exceed the purchase price of the product in question. LANDA makes every effort to ensure that all illustrations and specifications are correct, however, these do not imply a warranty that the product is merchantable or fit for a particular purpose, or that the product will actually conform to the illustrations and specifications. **THE WARRANTY CONTAINED HEREIN IS IN LIEU OF ALL OTHER WARRANTIES, EXPRESS OR IMPLIED, INCLUDING ANY IMPLIED WARRANTY OF FITNESS FOR A PARTICULAR PURPOSE.** LANDA does not authorize any other party, including authorized LANDA Dealers, to make any representation or promise on behalf of LANDA, or to modify the terms, conditions, or limitations in any way. It is the buyer's responsibility to ensure that the installation and use of LANDA products conforms to local codes. While LANDA attempts to assure that its products meet national codes, it cannot be responsible for how the customer chooses to use or install the product.