

SPARE PARTS LIST

for

Infrared oil heater

Model

VAL6

Type

◆ **EPX5 for 120V 60Hz**

May, 2017

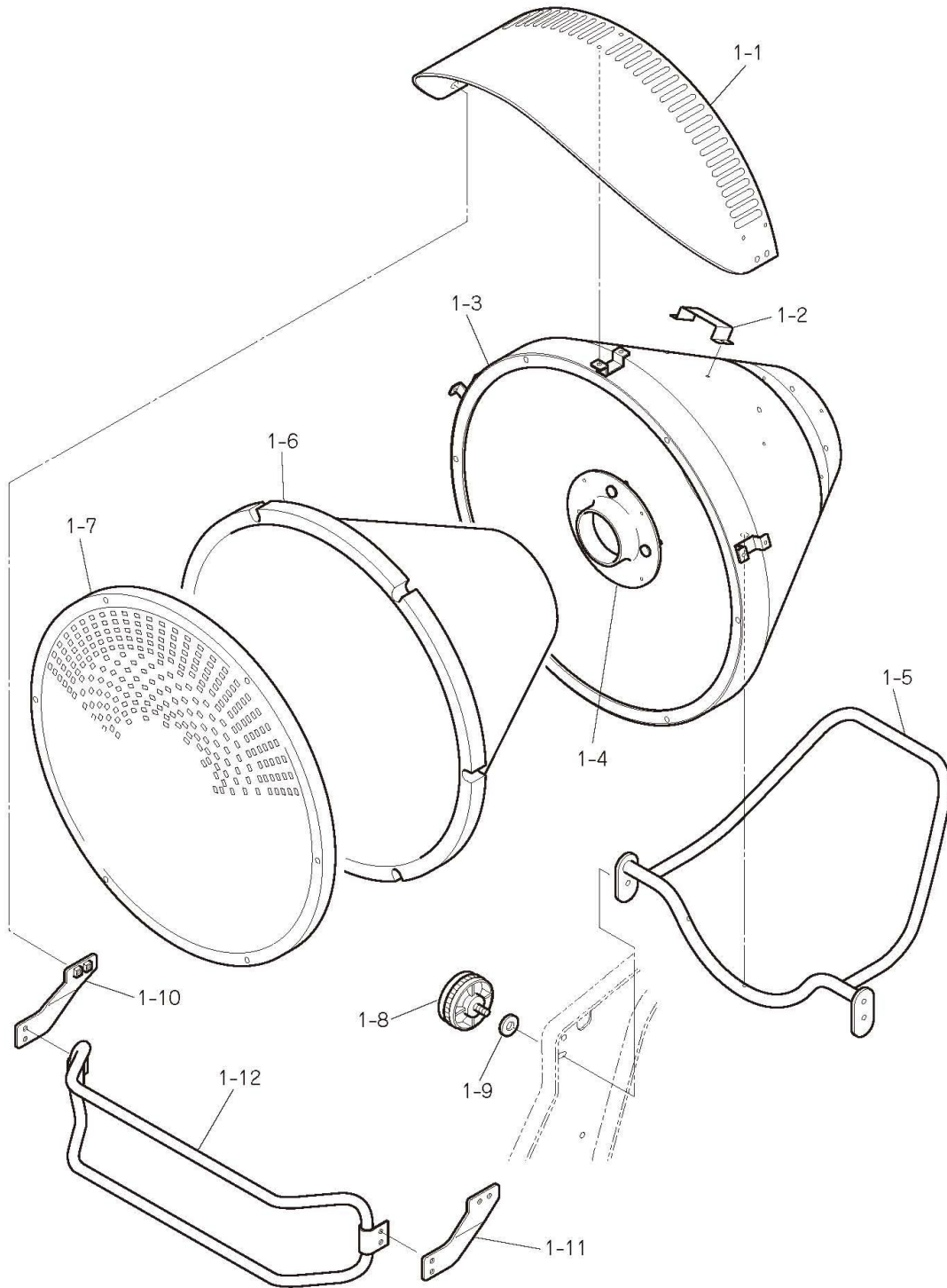
Shizuoka Seiki Co., Ltd.

*** PRICES AND SPECIFICATIONS ARE SUBJECT TO CHANGE WITHOUT NOTICE***

© 2017 J.S.O'will, Inc.. Shizuoka Seiki Co. Ltd. All Rights Reserved.

Serial Number History

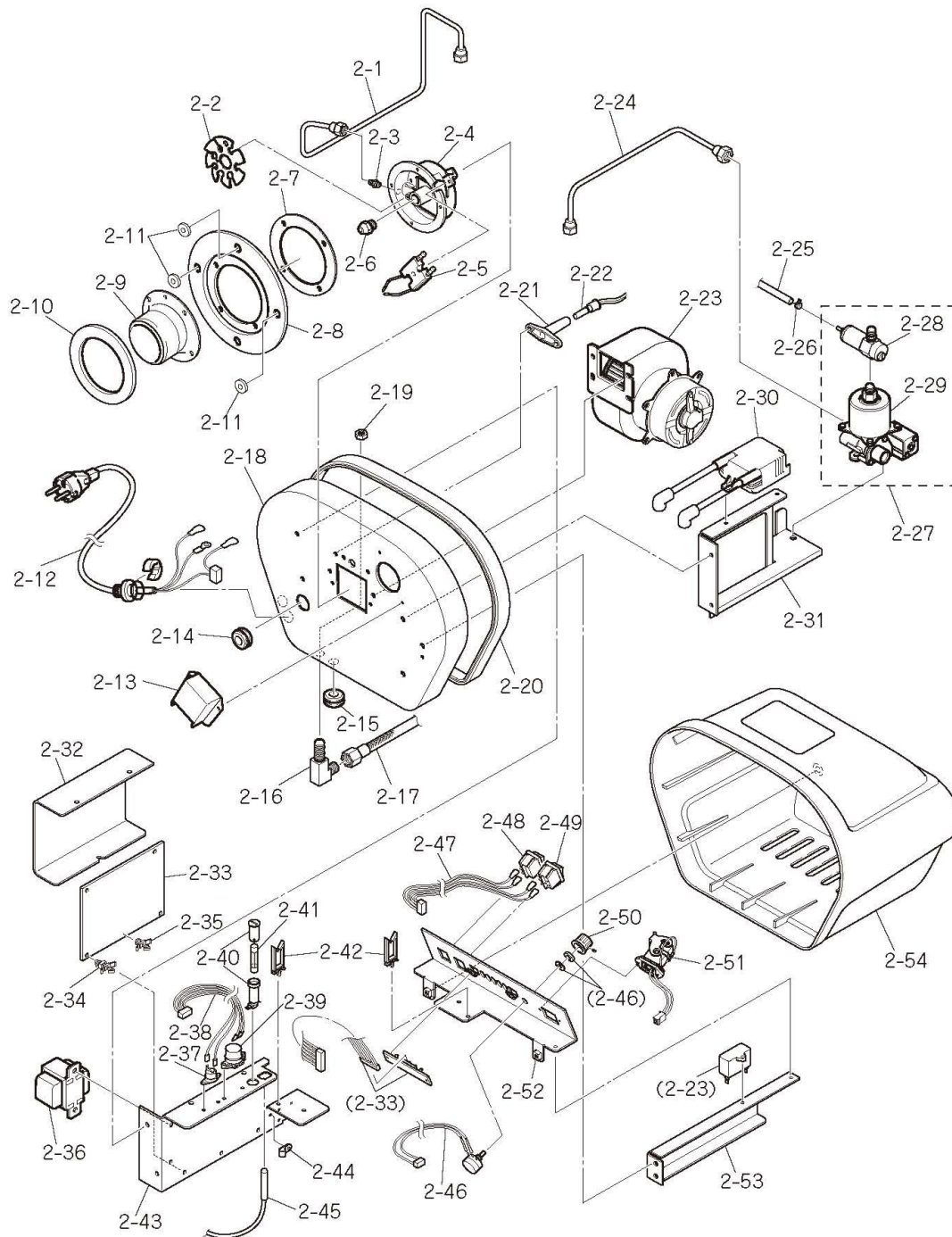
2001-2002	S lot
2002-2003	R lot
2003-2004	Q lot
2004-2005	P lot
2005-2006	N lot
2006-2007	J lot
2007-2008	I lot
2008-2009	H lot
2009-2010	G lot
2010-2011	F lot
2011-2012	E lot
2012-2013	D lot
2013-2014	C lot
2014-2015	B lot
2015-2016	A lot
2016-2017	Z lot
2017-2018	Y lot



VAL6 EPX_Combustion Section 09.03.26

VAL6 EPX Radiation Section

PART NO.	PART NAME	PART ID.	CODE NO.	Q'TY /SET	EPX5	REMARKS
1-1	VISOR	VAL-EPX-1-01	50335 203003	1	●	
1-2	CAUTION LABEL PLATE	VAL-EPX-1-02	50335 103006	1	●	WITH 50300203002 LABEL
1-3	CONICAL HOUSING		50335 103004	1	N/A	changed to 50335180001
	CONICAL HOUSING ASSEMBLY	VAL-EPX-1-03	50335 180001	1	●	include 1-2
1-4	BURNER FITTING PIECE	VAL-EPX-1-04	50335 203007	1	●	
1-5	SUPPORT PIPE	VAL-EPX-1-05	50335 103002	1	●	
1-6	CONICAL INSULATOR	VAL-EPX-1-06	50335 203002	1	●	
1-7	RADIATION DISK	VAL-EPX-1-07	50335 203001	1	●	
1-8	KNOB BOLT	VAL-KSL-T-07	50229 202074	1	●	
1-9	GASKET	VAL-EPX-1-09	21300 5002-9	1	●	Replace to 50239 203024
1-10	PROTECTOR BRACKET(L)	VAL-EPX-1-10	50335 203006	1	●	
1-11	PROTECTOR BRACKET(R)	VAL-EPX-1-11	50335 203005	1	●	
1-12	PROTECTOR ASSEMBLY	VAL-EPX-1-12	50335 103005	1	●	



VAL6 EPX_Burner Section 09.03.26

VAL6 EPX Burner Section

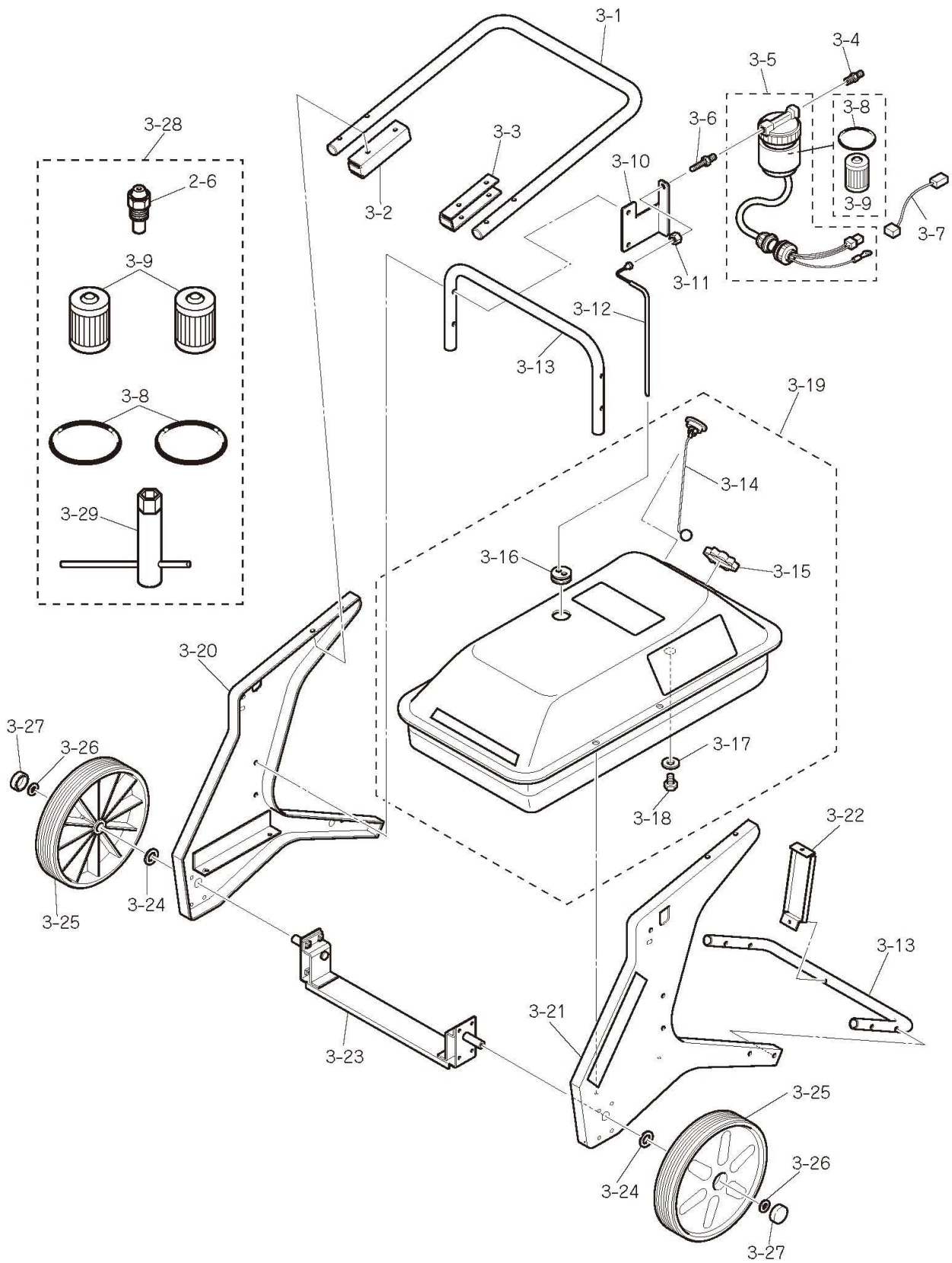
PART NO.	PART NAME <BURNER SECTION>	PART ID.	CODE NO.	Q'TY /SE T	EPX5	REMARKS
2-1	FUEL OUTLET LINE	VAL-EPX-2-01	50335 201007	1	●	
2-2	WHIRL VANE	VAL-EPX-2-02	50335 201012	1	●	
2-3	NOZZLE NIPPLE	VAL-KSL-B-09	50217 202052	1	●	
2-4	DIFFUSER	VAL-NA-R-12	50284 202007	1	●	
2-5	ELECTRODE	VAL-KSL-B-07A	50303 201010	1	●	
2-6	NOZZLE	VAL-KSL-B-04	50300 201018	1	●	0.85G/60°H for H lot only
		VAL-KSL-B-04A	50335 201038	1	●	0.75G/60°H
2-7	DIFFUSER PACKING	VAL-KSL-B-03	50298 201020	1	●	
2-8	BURNER FLANGE	VAL-EPX-2-08	50300 201008	1	●	
2-9	BURNER CONE	VAL-EPX-2-09	50300 201017	1	●	
2-10	BURNER PACKING	VAL-EPX-2-10	50335 201036	1	●	
2-11	SPACER RING	VAL-EPX-2-11	50335 201037	3	●	
2-12	POWER CABLE	VAL-EPX-2-12	50337 201002	1	●	
2-13	ELECTRODE COVER	VAL-EPX-2-13	50298 201008	1	●	
2-14	PUMP NOZZLE GROMMET	VAL-EPX-2-14	21022 003-25	1	●	
2-15	φ16 GROMMET	VAL-EPX-2-15	50335 201029	1	●	
2-16	RETURN LINE NIPPLE	VAL-1JA-B-33	21300 503-60	1	●	Discontinued from 2015
			50213 201007	1	●	Replacement for 21300503-60
2-17	FUEL HOSE	VAL-EPX-2-17	50220 203003	1	●	L=450
2-18	BURNER BASE	VAL-EPX-2-18	50335 201001	1	●	
2-19	NIPPLE FITTING NUT	VAL-KSL-B-37	21300 503-58	1	●	same as 3-11
2-20	BASE PACKING	VAL-EPX-2-20	50335 201018	1	●	
2-21	FLAME MONITOR HOLDER	VAL-EPX-2-21	50262 202029	1	●	
2-22	FLAME MONITOR COMPLETE	VAL-EPX-2-22	50335 101009	1	●	
2-23	FAN MOTOR	VAL-EPX-2-23	50337 201004	1	●	
2-24	FUEL INTAKE LINE	VAL-EPX-2-24	50335 201006	1	●	
2-25	RETURN HOSE	VAL-EPX-2-25	50335 201008	1	●	
2-26	HOSE CLAMP	VAL-KSL-B-03	50319 202016	1	●	

VAL6 EPX Burner Section

PART NO.	PART NAME <BURNER SECTION>	PART ID.	CODE NO.	Q'TY /SE T	EPX5	REMARKS
2-27	FUEL PUMP WITH AIR VENT VALVE	VAL-EPX-2-27H	50337 201003	1	●	for H lot only
		VAL-EPX-2-27	50337 201007	1	●	
2-30	IGNITION TRANSFORMER	VAL-EPX-2-30	50298 201006	1	●	
2-31	PUMP TRANSFORMER BRACKET	VAL-EPX-2-31	50335 201002	1	●	
2-32	BURNER CONTROL COVER	VAL-EPX-2-32	50337 101005	1	●	label:50335201017 +50300201028
2-33	BURNER CONTROL BOARD	VAL-EPX-2-33H	50337 170001	1	●	for H lot only (7min.)
		VAL-EPX-2-33	50335 201039	1	●	
2-34	CONTROL BOARD SUPPORT	VAL-EPX-2-34	50229 201037	4	●	
2-35	CONTROL BOARD SPACER	VAL-EPX-2-35	50271 202023	2	●	
2-36	STEP DOWN TRANSFORMER	VAL-EPX-2-36	50300 201005	1	●	
2-37	OVERHEAT SENSOR	VAL-EPX-2-37	50288 202001	1	●	
2-38	OVERHEAT SENSOR CABLE	VAL-EPX-2-38	50335 201028	1	●	
2-39	TIP-OVER SWITCH	VAL-KSL-B-44	50298 202015	1	●	
2-40	FUSE HOLDER	VAL-KSL-B-18A	50300 201024	1	●	
2-41	FUSE	VAL-KSL-B-17A	50300 201026	1	●	
2-42	WIRE BINDING	VAL-EPX-2-42	50810 201055	2	●	till 2017 (WS-3)
		VAL-EPX-2-42A	50335 201048	2	●	from 2016 Z01 (WS-4)
2-43	CONTROL BOARD CHASSIS	VAL-EPX-2-43	50335 201003	1	●	
2-44	NYLON CLAMP	VAL-EPX-2-44	50304 202022	1	●	
2-45	TEMPERATURE SENSOR	VAL-EPX-2-45	50304 202021	1	●	
2-46	INTERNAL THERMOSTAT CABLE	VAL-EPX-2-46	50335 101007	1	●	
2-47	OPERATION SWITCH CABLE	VAL-EPX-2-47	50335 201026	1	●	
2-48	CHANGE-OVER SWITCH	VAL-EPX-2-48	50288 204014	1	●	till H-02 change to 50335201045
			50335 201045	1	●	from G-01
2-49	OPERATION SWITCH	VAL-EPX-2-49	50288 204013	1	●	till H-02 change to 50335201044
			50335 201044	1	●	from G-01
2-50	INTERNAL THERMOSTAT KNOB	VAL-EPX-2-50	50335 201025	1	●	
2-51	EXTERNAL THERMOSTAT CONNECTOR	VAL-EPX-2-51	50335 101008	1	●	

VAL6 EPX Burner Section

PART NO.	PART NAME <BURNER SECTION>	PART ID.	CODE NO.	Q'TY /SE T	EPX5	REMARKS
2-52	OPERATING PANEL	VAL-EPX-2-52	50335 101011	1	●	
2-53	OPERATING BRACKET	VAL-EPX-2-53	50335 201010	1	●	
2-54	BURNER COVER	VAL-EPX-2-54	50337 180002	1	●	w/o 50335201043



VAL6 EPX_Tank Section 09.03.26

VAL6 EPX Tank Section

PART NO.	PART NAME <TANK SECTION>	Part ID.	CODE NO.	Q'TY /SET	EPX5	REMARKS
3-1	HANDLE	VAL-EPX-3-01	50335 202012	1	●	till 2014 B lot
3-1A		VAL-EPX-3-01A	50335 202030			from 2015 A-01
3-2	HANDLE STAY BRACKET(L)	VAL-EPX-3-02	50335 202019	1	●	
3-3	HANDLE STAY BRACKET(R)	VAL-EPX-3-03	50335 202020	1	●	till 2014 B lot
3-3A		VAL-EPX-3-03A	50335 202031			from 2015 A-01
3-4	FILTER HOSE NIPPLE	VAL-KSL-B-15	220310 01-43	1	●	
3-5	STRAINER HEATER ASSEMBLY (with body)	VAL-EPX-3-05	50337 102002	1	●	
3-6	FILTER NIPPLE	VAL-EPX-3-06	50306 201010	1	●	
3-7	STRAINER HEATER RELAY CABLE	VAL-EPX-3-07H	50337 201006	1	●	till G-01
		VAL-EPX-3-07	50337 201009	1	●	from G-02
3-8	O RING	VAL-KSL-B-38-1	21021 003-13	1	●	
3-9	FILTER ELEMENT	VAL-KSL-B-14	21021 003-10	1	●	
3-10	FILTER FITTING BRACKET	VAL-EPX-3-10	50335 202014	1	●	
3-11	NIPPLE FITTING NUT	VAL-KSL-B-37	21300 503-58	1	●	same as 2-19
3-12	SUCTION PIPE ASSEMBLY	VAL-EPX-3-12	50335 102011	1	●	
3-13	SUPPORT PIPE	VAL-EPX-3-13	50335 202013	2	●	
3-14	FUEL GAUGE	VAL-EPX-3-14	50335 202021	1	●	
3-15	TANK CAP	VAL-EPX-3-15	50335 102008	1	●	
3-16	SUCTION RETURN PACKING	VAL-DS-T-05A	50317 203013	1	●	
3-17	DRAIN PACKING	VAL-KSL-T-21	50231 204021	1	●	
3-18	DRAIN BOLT	VAL-KSL-T-22	50231 204020	1	●	
3-19	FUEL TANK ASSEMBLY	VAL-EPX-3-19	50337 102003	1	●	sticker (50337202002)
3-20	SIDE PANEL(L)	VAL-EPX-3-20	50335 102012	1	●	
3-21	SIDE PANEL(R)	VAL-EPX-3-21	50335 102013	1	●	
3-22	TANK SUPPORT BRACKET	VAL-EPX-3-22	50335 202011	1	●	
3-23	WHEEL BEARING ASSEMBLY	VAL-EPX-3-23	50335 102006	1	●	
3-24	WHEEL SPACER	VAL-EPX-3-24	50335 202028	2	●	
3-25	WHEEL	VAL-EPX-3-25	50335 202007	2	●	
3-26	WHEEL WASHER	VAL-EPX-3-26	50335 202022	2	●	
3-27	SHAFT CAP	VAL-EPX-3-27	50335 202010	2	●	
3-28	REPAIR SET	VAL-EPX-3-28	50335 150002	1	●	
3-29	NOZZLE WRENCH	VAL-KSL-B-38-2	21022 003-68	1	●	

VAL6 EPX Tank Section

PART NO.	PART NAME <TANK SECTION>	Part ID.	CODE NO.	Q'TY /SET	EPX5	REMARKS
-----------------	------------------------------------	-----------------	-----------------	------------------	-------------	----------------

Option

	SHIELDING MAT(10pcs pack)	VAL-MAT	50300 205001			
	STRAINER HEATER	VAL-EPX-STH	50337 180001	1	•	