

# Plunger Pumps

## FEATURING

**MANIFOLD:** High strength forged brass or nickel plated for long term use.

**BOLTS:** Eight 10mm grade 8.8.

**PLUNGERS:** A special thick solid ceramic for long life, strong durability and more resilience.

**CRANKCASE:** Precision die-cast, large cooling fins and anodized for maximum heat dissipation. Bayonet style sight glass located in the rear and side cover, fill and side and bottom drain plugs.

**BEARINGS:** Oversized premium tapered roller bearing for maximum life and load distribution.

**BEARINGS SUPPORTS:** Precision die-cast and machined to assure concentricity and alignment.

**VALVES, SEATS, AND SPRINGS:** Stainless steel with specially designed Ultra Form cages to provide long life and positive seating.

**SEALS AND U-PACKINGS:** Continuously lubricating for extended life. Triple lip oil seal for assured crankcase seal.

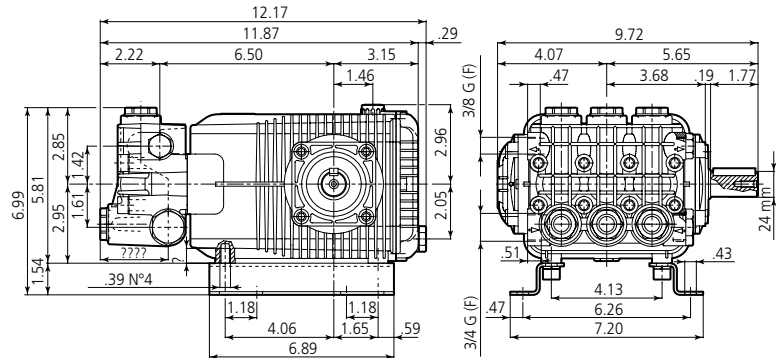
**PLUNGER RODS:** High strength stainless steel, for heavy duty use.

**CONNECTING RODS:** Two-piece special alloy aluminum based material, oversized for maximum strength, load disbursement, and long life. Heavy pin area construction, for added load strength.

## DIMENSIONS



XWA N version Solid shaft pump ø 24 mm



## SPECIFICATIONS

| MODEL      | MAX GPM | MAX LMP | MAX PSI | MAX BAR | POWER EBHP | BORE DIA MM | STROKE MM | CRANKSHAFT ID STAMP | WEIGHT LBS. |
|------------|---------|---------|---------|---------|------------|-------------|-----------|---------------------|-------------|
| XWA4G20N   | 4.0     | 15.1    | 2000    | 140     | 5.5        | 20          | 10.0      | 6                   | 34          |
| XWA4G30N   | 4.0     | 15.1    | 3000    | 205     | 7.5        | 20          | 10.0      | 6                   | 34          |
| XWA4G40N   | 4.0     | 15.1    | 4000    | 275     | 11.0       | 20          | 13.8      | 6                   | 34          |
| XWA5.5G22N | 5.5     | 20.5    | 2200    | 150     | 7.5        | 20          | 13.8      | 4                   | 34          |
| XWA5.5G30N | 5.5     | 20.5    | 3000    | 200     | 10.0       | 20          | 13.8      | 4                   | 34          |
| XWA5.5G40N | 5.5     | 20.5    | 4000    | 275     | 14.0       | 20          | 13.8      | 4                   | 34          |
| XWA7G22N   | 7.0     | 25.5    | 2200    | 150     | 10.0       | 20          | 17.2      | 2                   | 34          |
| XWA7G32N   | 7.0     | 25.5    | 3200    | 220     | 14.0       | 20          | 17.2      | 2                   | 34          |
| XWA7G35N   | 7.0     | 25.5    | 3500    | 240     | 15.0       | 20          | 17.2      | 2                   | 34          |
| XWA7G40N   | 7.0     | 25.5    | 4000    | 275     | 17.0       | 20          | 17.2      | 2                   | 34          |
| XWA8G19N   | 8.0     | 30.2    | 1900    | 130     | 10.0       | 20          | 19.8      | 1                   | 34          |
| XWA8G29N   | 8.0     | 30.2    | 2900    | 200     | 15.0       | 20          | 19.8      | 1                   | 34          |
| XWA8G35N   | 8.0     | 30.2    | 3500    | 240     | 18.0       | 20          | 19.8      | 1                   | 34          |
| XWA9G16N   | 9.0     | 34.0    | 1600    | 110     | 10.0       | 22          | 19.8      | 1                   | 34          |
| XWA9G24N   | 9.0     | 34.0    | 2400    | 170     | 15.0       | 22          | 19.8      | 1                   | 34          |

Oil Capacity = 32oz

Maximum Fluid Temperature = 140° F

Inlet Thread = 3/4" F

Discharge Thread = 3/8" F

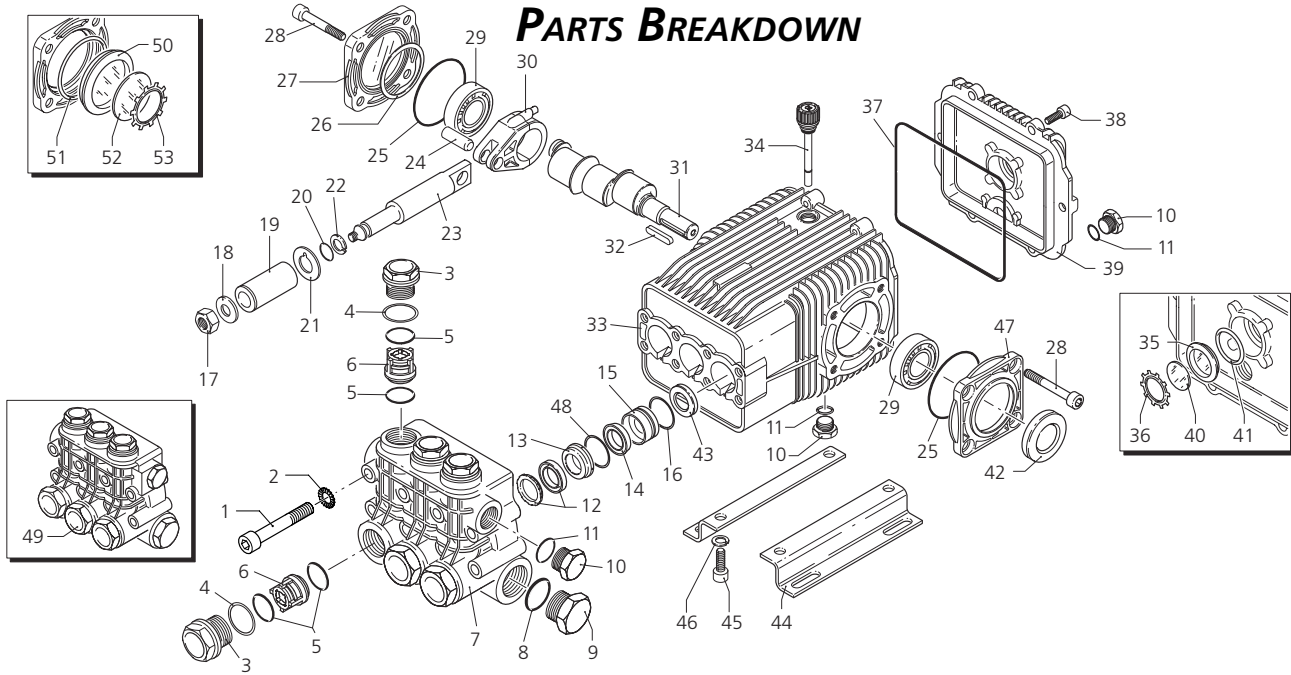
### Torque Specifications Inch pounds (ft. lbs)

| HEAD     | PISTON NUT | REAR COVER | SIDE COVER | VALVE CAP | CON RODS |
|----------|------------|------------|------------|-----------|----------|
| 442 (37) | 106 (8.8)  | 92 (7.7)   | 217 (18)   | 602 (50)  | 89 (7.5) |

**SPECIAL NOTE:** Use AR64516 Oil. First change oil after 50 hours of use. Then every 500 hours. This oil is specially formulated to provide correct lubrication properties for our pumps. **No** other oil is factory approved for these pumps.



**PARTS BREAKDOWN**



| Pos. | Code    | Description            | Qty.   | Pos. | Code    | Description          | Qty.  | Legend    |         |         |         |
|------|---------|------------------------|--------|------|---------|----------------------|-------|-----------|---------|---------|---------|
| 1    | 1940260 | Screw                  | 8      | 31   | 1940530 | Crankshaft           | ○ 1   | Ø 20      | Ø 20    | Ø 20    | Ø 22    |
| 2    | 650530  | Washer                 | 8      | 31   | 1940190 | Crankshaft           | ● 1   | For ○     | For □   | For ▼   | For ◆   |
| 3    | 1940140 | Plug                   | 6      | 31   | 1940170 | Crankshaft           | □ 1   | XWA4G20   | XWA7G22 | XWA8G19 | XWA9G16 |
| 4    | 1940150 | Ring                   | 6      | 31   | 1940160 | Crankshaft           | ▼◆ 1  | XWA4G30   | XWA7G32 | XWA8G29 | XWA9G24 |
| 5    | 1140450 | O-Ring                 | 12     | 32   | 620250  | Key                  | 1     | XWA4G40   | XWA7G35 | XWA8G35 | XWA9G30 |
| 6    | 1949050 | Complete valve         | 6      | 33   | 1941330 | Pump housing         | 1     |           | XWA7G40 |         |         |
| 7    | 1940021 | Pump head              | ○□▼● 1 | 34   | 1140370 | Oil cap              | 1     | For ●     |         |         |         |
|      | 1941210 | Pump head              | ◆ 1    | 35   | 1260250 | Oil indicator        | 1     | XWA5.5G22 |         |         |         |
| 8    | 550350  | O-Ring                 | 1      | 36   | 1260430 | Snap ring            | 1     | XWA5.5G30 |         |         |         |
| 9    | 1140300 | Plug 3/4" G            | 1      | 37   | 1940410 | O-Ring               | 1     | XWA5.5G40 |         |         |         |
| 10   | 1980740 | Plug 3/8" G            | 3      | 38   | 1200430 | Screw                | 6     |           |         |         |         |
| 11   | 740290  | O-Ring                 | 3      | 39   | 1949010 | Complete cover       | 1     |           |         |         |         |
| 12   | 1940440 | Gasket w/ring Ø20      | ○□▼● 3 | 40   | 1780690 | Disc                 | 1     |           |         |         |         |
|      | 1940270 | Gasket w/ring Ø22      | ◆ 3    | 41   | 1140450 | O-Ring               | 1     |           |         |         |         |
| 13   | 1940430 | Front piston guide Ø20 | ○□▼● 3 | 42   | 820680  | Seal                 | 1     |           |         |         |         |
|      | 1940200 | Front piston guide Ø22 | ◆ 3    | 43   | 1940560 | Seal                 | 3     |           |         |         |         |
| 14   | 1940470 | Gasket Ø20             | ○□▼● 3 | 44   | 1940370 | Base                 | 2     |           |         |         |         |
|      | 1940480 | Gasket Ø22             | 3      | 45   | 1940380 | Screw                | 4     |           |         |         |         |
| 15   | 1940450 | Rear piston guide Ø20  | ○□▼● 3 | 46   | 200231  | Washer               | 4     |           |         |         |         |
|      | 1940460 | Rear piston guide Ø22  | ◆ 3    | 47   | 1941240 | Open bearing support | 1     |           |         |         |         |
| 16   | 820490  | O-Ring                 | 3      | 48   | 1941220 | O-Ring               | 3     |           |         |         |         |
| 17   | 1940570 | Nut                    | 3      | 49   | 1949200 | Pump head assem Ø20  | ○□● 1 |           |         |         |         |
| 18   | 1940580 | Washer                 | 3      |      | 1949202 | Pump head assem Ø20  | ▼ 1   |           |         |         |         |
| 19   | 1420430 | Piston Ø20             | ○□▼● 3 |      | 1949203 | Pump head assem Ø22  | ◆ 1   |           |         |         |         |
|      | 1420120 | Piston Ø22             | ◆ 3    | 50   | 1941270 | Oil indicator        | 1     |           |         |         |         |
| 20   | 8880840 | O-Ring                 | 3      | 51   | 100410  | O-Ring               | 1     |           |         |         |         |
| 21   | 960460  | Spacer                 | 3      | 52   | 1941260 | Disc                 | 1     |           |         |         |         |
| 22   | 1940120 | Ring                   | 3      | 53   | 1941290 | Snap ring            | 1     |           |         |         |         |
| 23   | 1940070 | Guiding piston         | 3      |      |         |                      |       |           |         |         |         |
| 24   | 1940060 | Piston pin             | 3      |      |         |                      |       |           |         |         |         |
| 25   | 1941380 | O-Ring                 | 3      |      |         |                      |       |           |         |         |         |
| 26   | 1941390 | 0,05 mm shim           | 1-3    |      |         |                      |       |           |         |         |         |
|      | 1941400 | 0,10 mm shim           | 1-3    |      |         |                      |       |           |         |         |         |
|      | 1941410 | 0,19 mm shim           | 1-3    |      |         |                      |       |           |         |         |         |
|      | 1941420 | 0,25 mm shim           | 1-3    |      |         |                      |       |           |         |         |         |
| 27   | 1949011 | Complete side cover    | 1      |      |         |                      |       |           |         |         |         |
| 28   | 850370  | Screw                  | 8      |      |         |                      |       |           |         |         |         |
| 29   | 1140410 | Bearing                | 2      |      |         |                      |       |           |         |         |         |
| 30   | 1940050 | Con rod                | 3      |      |         |                      |       |           |         |         |         |

**Legend**

| Code         | Description   | Qty.      |
|--------------|---------------|-----------|
| Kit 2782 Ø20 | Water Seal    |           |
| Kit 2783 Ø22 | Water Seal    |           |
| Kit 2784 Ø20 | Support Rings |           |
| Kit 2785 Ø22 | Support Rings |           |
| Pos. Qty.    | Pos. Qty.     | Pos. Qty. |
| 12 3         | 5 6           | 17 3      |
| 14 3         | 6 6           | 18 3      |
| 16 3         |               | 19 3      |
| 48 3         |               | 20 3      |
|              |               | 21 3      |
|              |               | 22 3      |

**Repair Kits**

| Code         | Description | Qty.      |
|--------------|-------------|-----------|
| Kit 2542 Ø20 | Pistons     |           |
| Kit 2543 Ø22 | Pistons     |           |
| Kit 2781     | Oil Seals   |           |
| Pos. Qty.    | Pos. Qty.   | Pos. Qty. |
| 17 3         | 25 3        | 37 1      |
| 18 3         | 37 1        | 42 1      |
| 19 3         | 42 1        | 43 3      |
| 20 3         | 43 3        |           |

**Special Parts**

| Code | Description           | Qty. |
|------|-----------------------|------|
| 2778 | Viton water seals Ø20 | 1    |
| 2779 | Viton water seals Ø22 | 1    |

