

Plunger Pumps

FEATURING

MANIFOLD: High strength 316L Stainless Steel to insure long term use.

BOLTS: 304L stainless steel.

PLUNGERS: A special ultra thick solid ceramic for long life, strong durability and more resilience.

CRANKCASE: Precision die-cast, large cooling fins and special anticorrosion finish. Both side and rear cover sight glass.

BEARINGS: Premium SKF tapered roller bearings that provide extra load support, smoother and lower crankcase running temperatures and over all extended pump life.

VALVES, SEATS, AND SPRINGS: Stainless steel with specially designed cages to provide seating and extended valve life.

SEALS AND V-PACKINGS: Viton are continuously lubricating for extended life. SPL plunger retainers.

OIL SEALS: Triple lipped and spring loaded for greater durability and extended life..

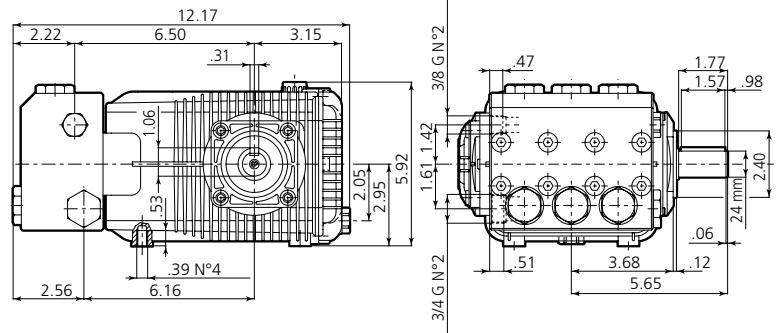
PLUNGER RODS: High strength stainless steel.

CONNECTING RODS: One piece special alloy bronze for higher pressures, oversized for maximum strength, load disbursement, and long life. Heavy pin area construction.

DIMENSIONS



XWL-SS N version
Solid shaft pump ø 24 mm



SPECIFICATIONS

MODEL	MAX GPM	MAX LMP	MAX PSI	MAX BAR	POWER EBHP	BORE DIA MM	STROKE MM	CRANKSHAFT ID STAMP	WEIGHT LBS.
XWL-SS42.15N	11	42	2200	150	5.5	28	17.2	2	36

Oil Capacity = 32oz

Maximum Fluid Temperature = 140° F

Inlet Thread = 3/4" F

Discharge Thread = 3/8" F

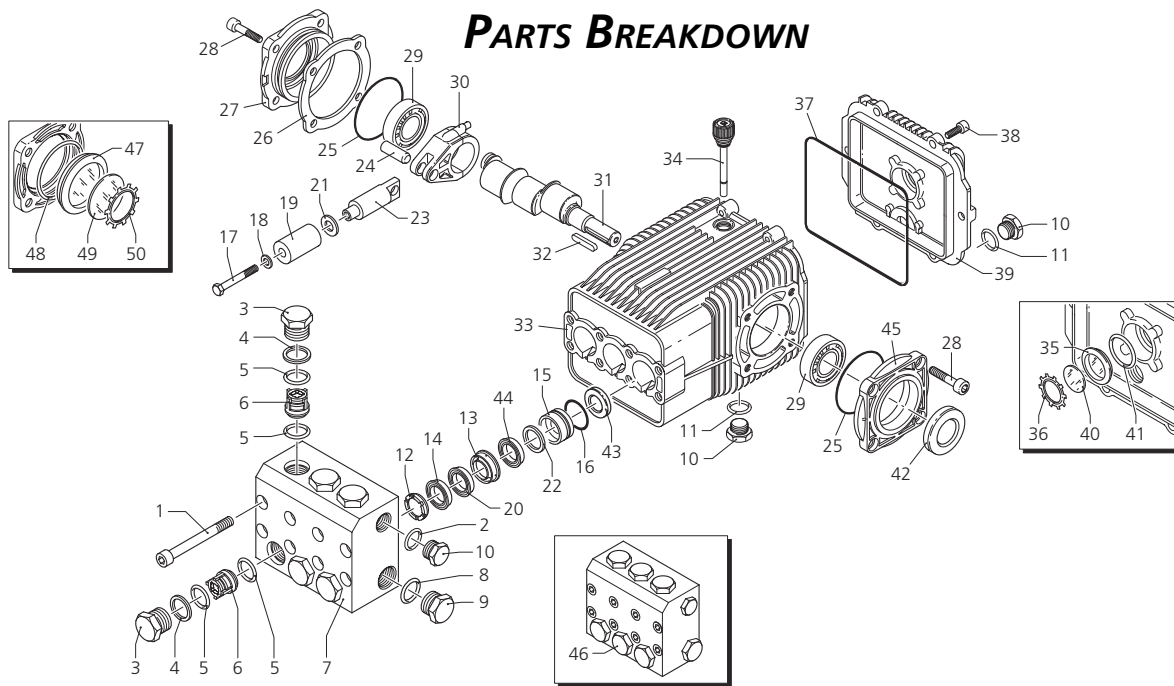
Torque Specifications Inch pounds (ft. lbs)

HEAD	PISTON NUT	REAR COVER	SIDE COVER	VALVE CAP	CON RODS
442 (37)	106 (8.8)	92 (7.7)	217 (18)	602 (50)	89 (7.5)

SPECIAL NOTE: Use AR64516 Oil. First change oil after 50 hours of use. Then every 500 hours. This oil is specially formulated to provide correct lubrication properties for our pumps. **No** other oil is factory approved for these pumps. **ANNOVI REVERBERI** High Performance Pumps



PARTS BREAKDOWN



Pos.	Code	Description	Qty.	Pos.	Code	Description	Qty.
1	1941360	Screw	8	40	1780690	Disc	1
2	740291	O-Ring	1	41	1140450	O-Ring	1
3	2520030	Plug	6	42	820680	Seal	1
4	1940150	Ring	6	43	1940560	Seal	3
5	1140451	O-Ring	12	44	2520361	Gasket	3
6	2529050	Complete valve	6	45	2520320	Open bearing support	1
7	2520150	Pump head	1	46	2529200	Pump head assembly	1
8	550351	O-Ring	1	47	1941270	Oil indicator	1
9	2520040	Plug 3/4" G	1	48	100410	O-Ring	1
10	2340350	Plug 3/8" G	3	49	1941260	Disc	1
11	740290	O-Ring	2	50	1941290	Snap ring	1
12	1941570	Support ring	3				
13	2520200	Front piston guide	3				
14	820631	Gasket	3				
15	2520210	Rear piston guide	3				
16	820491	O-Ring	3				
17	2520260	Screw	3				
18	2520250	Washer	3				
19	2520240	Piston	3				
20	2520220	Ring	3				
21	2520270	Spacer	3				
22	2520230	Ring	3				
23	2520280	Guiding piston	3				
24	1940060	Piston pin	3				
25	1941380	O-Ring	2				
26	1941390	0,05 mm shim	1-3				
27	1941400	0,10 mm shim	1-3				
28	1941410	0,19 mm shim	1-3				
29	1941420	0,25 mm shim	1-3				
30	2529011	Complete side cover	1				
31	2340240	Screw	8				
32	1140410	Bearing	2				
33	1940050	Con rod	3				
34	1940170	Crankshaft	1				
35	650250	Key	1				
36	3520330	Pump housing	1				
37	1140370	Oil cap	1				
38	1260250	Oil indicator	1				
39	1260430	Snap ring	1				
40	1940410	O-Ring	1				
41	680560	Screw	6				
42	2529010	Complete cover	1				

Legend

Ø 28
For
XWL-SS42.05
XWL-SS42.15

Repair Kits

Water Seal Kit 2164		Valve Kit 2162		Pistons Kit 2163		Oil Seals Kit 2781	
Pos.	Qty.	Pos.	Qty.	Pos.	Qty.	Pos.	Qty.
12	3	5	6	19	3	25	2
14	3	6	6			37	1
16	3					42	1
20	3					43	1
22	3						
35	3						

Piston Guide Kit 2165

Pos.	Qty.
13	3
15	3

26

