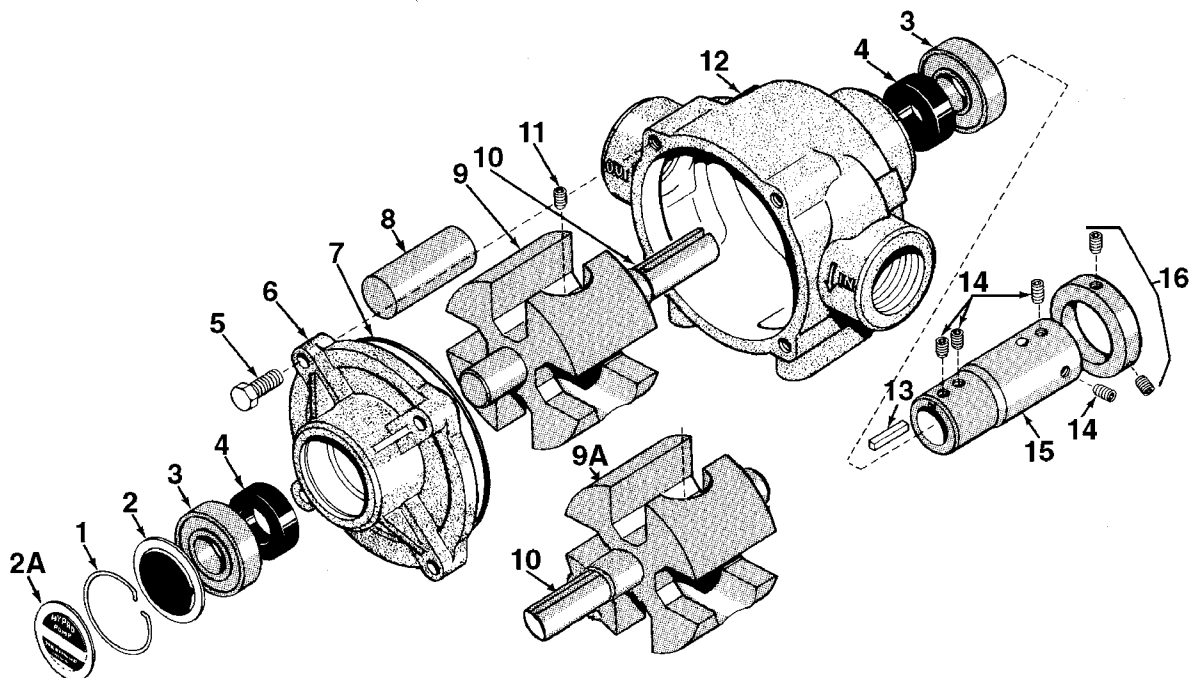


## Model 1200



| Ref. No. | Qty. Req'd. | Part Number | Description                                  |
|----------|-------------|-------------|--|
| 1        | 1           | 1800-0013   | Retainer Ring                                |
| 2        | 1           | 2840-0049   | Bearing Cover                                |
| 2A       | 1           | 6031-0258   | Name Plate (Specify Pump Model #)            |
| 3        | 2           | 2001-0006   | Ball Bearing                                 |
| 4        | 2           | 2112-0008   | Buna-N Seal (Standard)                       |
| 4        | 2           | 2112-0009   | Viton Seal (Optional)                        |
| 5        | 4           | 2210-0019   | Hex Head Bolt                                |
| 6        | 1           | 0200-1200C  | Endplate (Cast-Iron) with seal               |
| 7        | 1           | 1720-0127   | O-ring Gasket for Endplate                   |
| 8        | 4           | 1005-0006   | Super Roller (Standard)                      |
| 9        | 1           | 0300-1200C  | Rotor (Cast Iron) with shaft (Std. Rotation) |
| 9A       | 1           | 0301-1200C  | Rotor (Cast Iron) w/shaft (Reverse Rotation) |

| Ref. No. | Qty. Req'd. | Part Number | Description   |
|----------|-------------|-------------|---|
| 10       | 1           | 0500-1200   | Shaft   |
| 11       | 1           | 2230-0018   | Set Screw   |
| 12       | 1           | 0100-1200C  | Body (Cast Iron) with seal  |
| 13       | 1           | 1610-0005   | Key   |
| 14       | 1 kit       | 3410-0031   | Set Screw Kit   |
| 15       | 1           | 1320-0081   | 1-3/8" 6-spline 540 rpm PTO Adapter (Forged Steel) Includes Kit No. 3410-0031 |
| 16       | 1 kit       | 3430-0207   | Locking Collar Kit — Includes: (1) Collar and (2) Setscrews                   |

### ORDER PARTS FROM YOUR SUPPLIER

**Parts Kit No. 3430-0374** Consists of (4) Ref. 8 Super Rollers, (1) Ref 70-Ring, (2) Ref 4 Buna-N Seals

#### Locking Collar Kit No. 3430-0207 For Series 1200 Roller Pumps

This locking collar kit holds the pump driver shaft securely on the tractor PTO shaft. It is designed to increase pump life by reducing pump and PTO shaft wear due to vibration. To install locking collar:

1. Slide collar onto pump driver shaft.
2. Thread the longer set screw through the locking collar and partially through the threaded hole in the pump driver shaft. **IMPORTANT:** It is necessary to allow a minimum of 1/8" clearance between the locking collar and the pump driver shaft at set screw.

3. Thread the shorter set screw into the other threaded hole in the locking collar.
4. Slide pump driver hub over PTO shaft. Be sure PTO groove is under set screw.
5. Tighten the longer screw very securely with a 3/16" allen wrench.
6. Tighten the shorter set screw very securely with the same wrench. This binds set screw which prevents it from coming loose.
7. **NOTE:** Locking collar is off-center on the pump driver shaft when properly installed.