



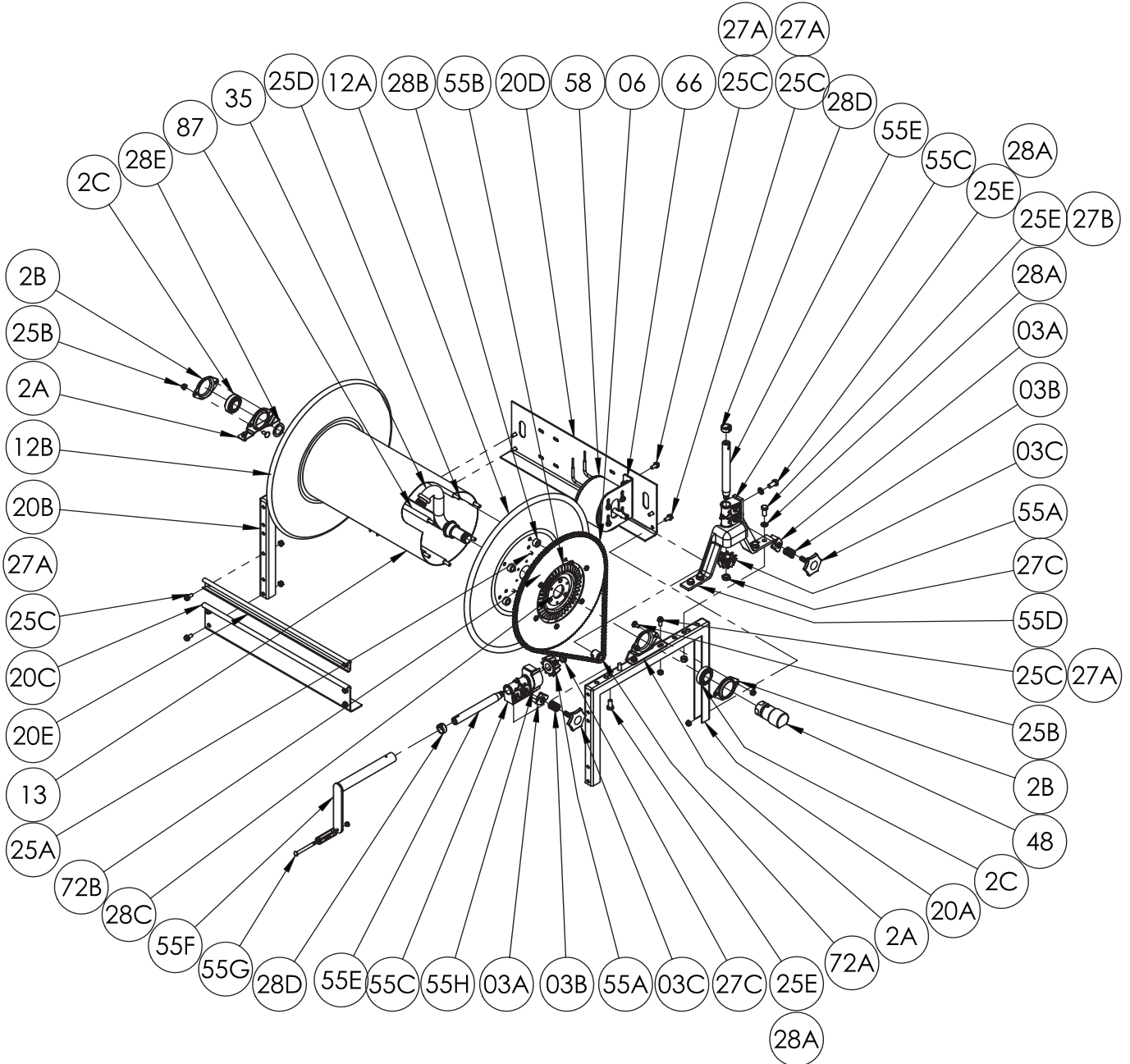
Hannay Reels®

The reel leader.

Hannay Reels, Inc., 553 State Route 143
Westerlo, NY 12193
Telephone 518-797-3791 • Toll Free 1-877-GO-REELS (467-3357)
FAX 1-800-REELING (733-5464)
INT'L FAX (518) 797-3259
Website: www.hannay.com
E-mail: reels@hannay.com

ISO 220

PARTS LIST SF SERIES



**PARTS LIST
ISO-220
SF SERIES**

When ordering parts
BE SURE TO SPECIFY COMPLETE MODEL NUMBER and SERIAL NUMBER OF REEL.
USE PART NUMBER!

<u>Item No.</u>	<u>Description</u>	<u>PART NUMBER</u>	<u>Quantity</u>
2	Self-Aligning Bearing Complete	9902.1400	2
2A	Self-Aligning Pillow Block	9902.2900	2
2B	Self-Aligning Bearing Holder	9902.2800	2
2C	Bearing Insert Only	9902.1500	2
3A	Brake Pad	9914.0433	1
3B	Brake Spring	9914.0451	1
3C	Brake Wheel	9914.0413	1
06	Chain, #35	Specify Model	1
12A	Front Disc, 19-21 Series (Specify Model)	9903.0821	1
12A	Front Disc, 23-24 Series (Specify Model)	9903.1121	1
12A	Front Disc, 25-26 Series (Specify Model)	9903.1321	1
12A	Front Disc, 30-31 Series (Specify Model)	9903.1621	1
12B	Back Disc, 19-21 Series (Specify Model)	9903.0821	1
12B	Back Disc, 23-24 Series (Specify Model)	9903.1121	1
12B	Back Disc, 25-26 Series (Specify Model)	9903.1321	1
12B	Back Disc, 30-31 Series (Specify Model)	9903.1621	1
13	Drum, 10-1/2" Diameter (Specify Model)	9905.3131	1
20	Roll Form Frame Assy, Includes feet & Brace (Specify Model)	9908.0155	1
20A	Front Frame (Specify Model)	9906.1201	1
20B	Back Frame (Specify Model)	9906.1201	1
20C	Front Foot (Specify Model)	9907.3000	1
20D	Back Foot (Specify Model)	9907.5000	1
20E	"C" Channel Brace (Specify Model)	9907.7000	1
25A	5/16"-18 x 1/2" Spinlock Bolt	9904.2158	5
25B	3/8"-16 x 3/4" Carriage Bolt w/Nut	9904.0201	4
25C	3/8"-16 x 3/4" Spinlock Bolt	9904.2201	16
25D	3/8"-16 Carriage Bolt w/Nut	Specify Model	6
25E	1/2"-13 x 1" Hex Head Bolt	9904.1402	6
27A	3/8"-16 Spinlock Nut	9904.6200	16
27B	1/2"-13 Hex Nut	9904.5400	4
27C	5/8"-18 SAE Hex Nut (ESNA)	9904.5600	1
28A	1/2" Lock Washer	9954.0030	6
28B	Sprocket Spacer	9954.0017	6
28C	Disc Washer	9965.0015	2
28D	Collar & Set Screw	9914.0351	1
28E	1" Hub Spacer	9954.0021	As Req'd
35	Hub Assembly, w/1" FNPT Riser (Specify Model)	9901.1600	1
48	Swivel Joint, Super Swivel, 1" FxF	9929.8560	1
55A	Pinion Gear, H-27	9914.0393	1
55B	Ring Gear, H-26	9914.0372	1
55C	Side Pinion Bearing	9914.0243	1
55D	Vertical Rewind Bracket	9914.0233	1
55E	Pinion Shaft (Specify Model)	9914.0250	1
55F	Crank Handle Complete, (includes handle, bolt & nut)	9914.0011	1
55G	Hand Crank Handle, (includes bolt & nut)	9914.0505	1
55H	Gear Guard	9914.0618	1
58	Motor, 12 Volt Nonexplosion-Proof	9915.0042	1
58	Motor, 12 Volt Explosion-Proof	9915.0013	1
66	Motor Mtg Plate (Nonexplosion-Proof only) w/ mtg bolts	9923.0015	1
72A	Motor Sprocket, 11T35 x 1-5/16	9910.1118	1
72B	112T35 Disc Sprocket (19-21)	9910.1321	1
72B	138T35 Disc Sprocket (23-24 & 25-26)	9910.1423	1
72B	180T35 Disc Sprocket (30-31)	9910.1526	1
87	3/8" Spacer Pipe (Specify Model)	9904.3200	6