



Hannay Reels®

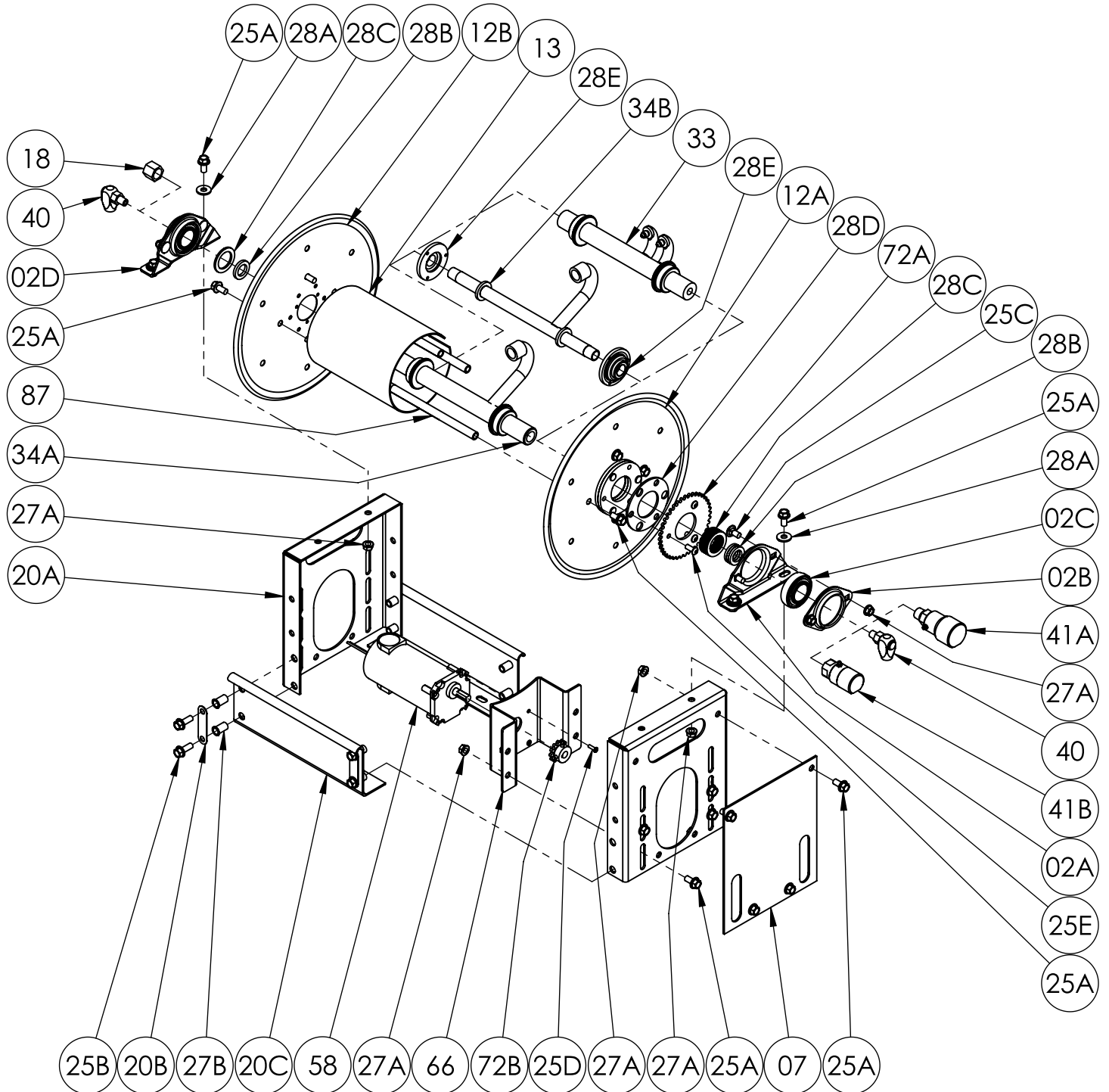
The reel leader.

Hannay Reels, Inc., 553 State Route 143
Westerlo, NY 12193
Telephone 518-797-3791 • Toll Free 1-877-GO-REELS (467-3357)
FAX 1-800-REELING (733-5464)
INT'L FAX (518) 797-3259
Website: www.hannay.com
E-mail: reels@hannay.com

ISO 228

PARTS LIST

**ESF1500/ESF2000 Series
Electric Rewind**



PARTS LIST
ISO 228
ESF1500/ESF2000 Series - Electric Rewind

When ordering parts

BE SURE TO SPECIFY COMPLETE MODEL NUMBER and SERIAL NUMBER OF REEL.

USE PART NUMBER!

Item No.	Description	PART NUMBER	Quantity
02A	S.A. Bearing Pillow Block (Steel E-Coated)	9902.2900	2
02B	S.A. Bearing Holder (Steel E-Coated)	9902.2800	2
02C	1" S.A. Bearing Insert Plated (ESFH1500 or ESF2000 Only)	9902.1500	2
02D	1" S.A. Bearing Ass'y (Inc. 02A, 02B, 02C, 25C, 27A) (ESFH1500 or ESF2000 Only)	9902.1400	2
02E	1/2" S.A. Bearing Insert Plated (ESF1500 or ESFL1500 Only)	9902.1300	2
02F	1/2" S.A. Bearing Ass'y (Inc. 02A, 02B, 02E, 25C, 27A) (ESF1500 or ESFL1500 Only)	9902.1200	2
6	#35 Chain- 80 Links (30" Long) w/ Connecting Link (Not Shown)	9912.0034	1
7	Lower Chain Guard for "ESF" Series Reels, per P07A-00650	9957.0045	1
12A	(14-16) 14" Dia. E-Coat Tipped Disc for ESF Reels Motor Side w/ Double EH-936	9903.0302	1
12B	(14-16) 14" Dia. E-Coat Tipped Disc, for ESF Reel Non Motor Side	9903.0301	1
13	6" Dia. Aluminum Drum (Specify Model)	9905.7112	1
18	1/2" Pipe Cap (ESF1500 Only)	9965.0013	1
18	1/2" SST Pipe Cap (ESFL1500 Only)	9965.0113	1
19	"ESF" Series Frame Assembly (Specify Model), per A19A-00430	9908.2031	1
20A	"ESF" Series Side Frame, per P20A-01990	9906.5051	2
20B	Oval Insert Cover Plate (18 GA) (Steel E-Coated)	9958.0102	4
20C	2" x 4" Footstock (Specify Model) (Steel E-Coated)	9907.3000	2
25A	3/8"-16 x 3/4" Spinlock Bolt	9904.2201	20
25B	3/8"-16 x 1" Spinlock Bolt	9904.2202	8
25C	3/8"-16 x 3/4" Carriage Bolt	9904.0201	4
25D	10-32 x 5/8" Hex Socket Button Head Cap Screw	9904.9041	4
25E	5/16"-18 x 3/4" Hex Socket Button Head Cap Screw	9904.9101	3
27A	3/8"-16 Spinlock Nut	9904.6200	16
27B	3/8"-16 Blind Insert	9958.0100	8
28A	3/8" Flat Washer	9954.0007	4
28B	1/2" Hub Spacer Washer (Plastic) (ESF1500 or ESFL1500 Only)	9954.0020	As Req'd
28C	1" Hub Spacer Washer (Plastic) (ESFH1500 or ESF2000 Only)	9954.0021	As Req'd
28D	Sprocket Spacer Washer, per P28A-01020	9954.0090	1
28E	1500 Series Disc Washer, per P28A-00050 (ESF1500 or ESFL1500 Only)	9965.0040	2
33	1/4" Dual Barstock Hub Assembly (Specify Model and Fittings) (ESF2000 Only)	9901.0271	1
34A	1/2" SST Barstock Hub Assembly (Specify Model and Fittings) (ESFH1500 Only)	9901.0634	1
34B	1/2" Welded Steel Hub Assembly (Specify Model and Fittings) (ESF1500 Only)	9901.0610	1
34C	1/2" Welded SST Hub Assembly (Specify Model and Fittings) (ESFL1500 Only)	9901.0604	1
40	1/4" 90 Degree MxF 10,000 PSI Super Swivel Joint (Buna Seals) (ESF2000 Only)	9925.8111	2
40	1/4" 90 Degree MxF 10,000 PSI Super Swivel Joint (EPDM Seals) (ESF2000 Only)	9925.8112	2
40	1/4" 90 Degree MxF 10,000 PSI Super Swivel Joint (Viton Seals) (ESF2000 Only)	9925.8114	2
41A	1/2" 90 Degree MxF 6,000 PSI Oxygen Super Swivel Joint (Viton Seals) (ESFH1500)	9927.8177	1
41B	1/2" 90 Degree FxF 5,000 PSI Super Swivel Joint (Aflas Seals) (ESF1500 Only)	9927.8551	1
41B	1/2" 90 Degree FxF 3,000 PSI Oxygen Super Swivel Joint (Viton Seals) (ESFL1500)	9927.8537	1
58	Bodine 12V DC Face Mount 1/14 HP 60 RPM Motor	9915.1000	1
58	Bodine 24V DC Face Mount 1/14 HP 60 RPM Motor (Optional)	9915.1002	1
66	Inboard Motor Mounting Plate for "ESF" Series Reels, per P66A-01030	9923.0047	1
72A	40T35 x 5" Dia. Disc Sprocket	9910.1307	1
72B	12T35 x 3/4" Motor Sprocket (1/2" Bore)	9910.1020	1
87	Anodized Threaded Spacer Pipe	Spec Model	4