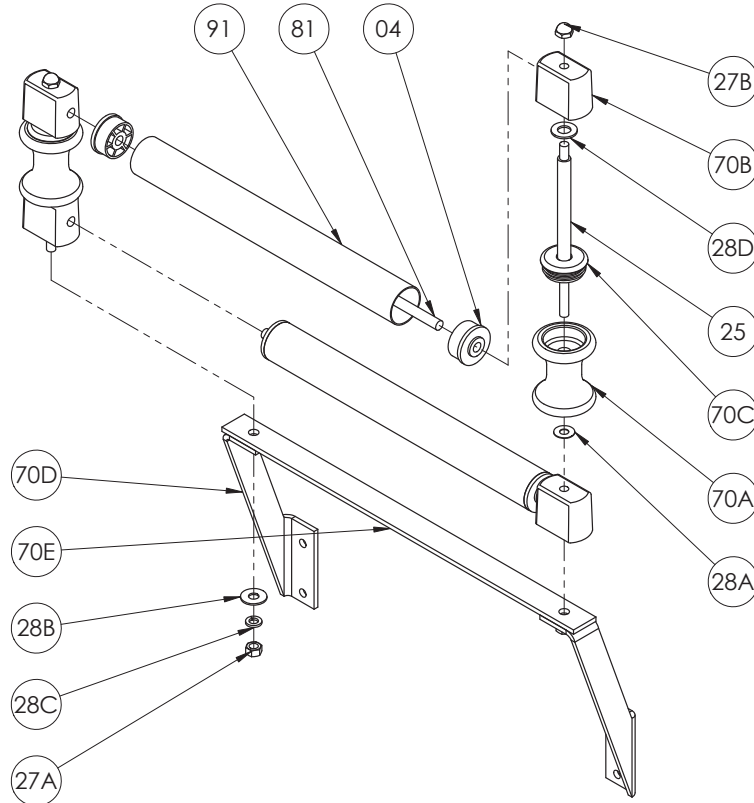


ISO 251
PARTS LIST

**DOUBLE CAPTIVE
ROLLER & SPOOL
ASSEMBLY**

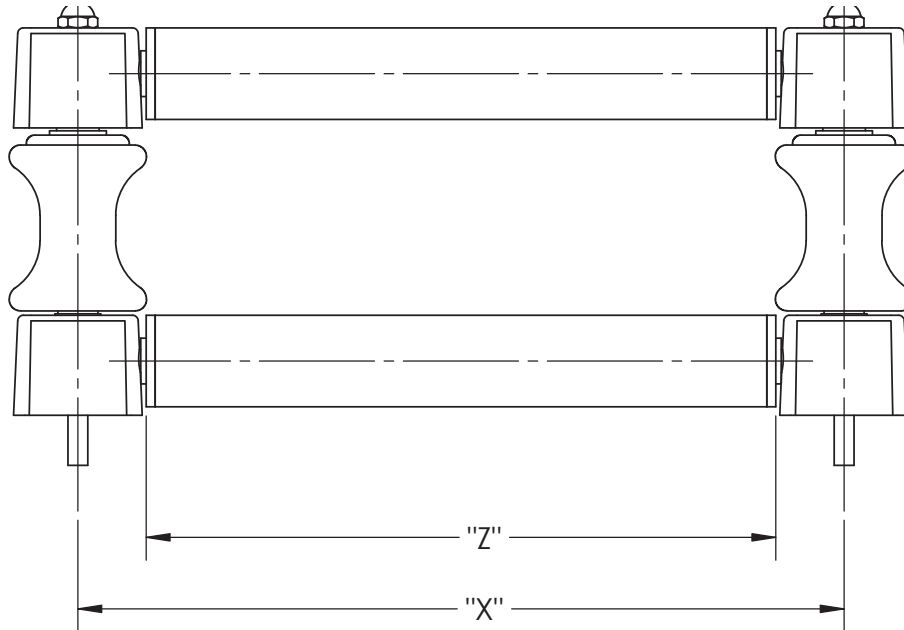


**When Ordering Parts BE SURE TO SPECIFY COMPLETE MODEL NUMBER and SERIAL NUMBER OF REEL
USE PART NUMBER!**

<u>Item No.</u>	<u>Description</u>	<u>Part No.</u>	<u>Quantity</u>
04	FH-302-2 (2" Trunnion Bearing)	9940.0008	4
25	Step bolt for Double Captive Roller	9940.0020	2
27A	FH-306 hex nut (7/16"-14).....	9940.0011	2
27B	7/16"-14 Chrome Acorn Nut	9958.0050	2
28A	Nylon washer (1" OD x 7/16" ID x 0.032" thick)	9940.0014	2
28B	7/16" Flat Washer	9954.0009	2
28C	7/16" Lock Washer	9954.0029	2
28D	5/8" Flat Washer	9954.0004	2
70A	FH-301 Spool (chrome-plated), per P70A-01610.....	9940.0005	2
70B	FH-302 Block (chrome-plated)	9940.0006	4
70C	Double captive FH-3 Black Plastic Cap W/ Hole for Step Bolt	9940.0001	2
70D	FH-3 Top-Wind Mounting Bracket Steel Pair, per P70A-01150	9940.0060	1
70D	FH-3 Top-Wind Mounting Bracket Aluminum Pair, per P70A-01150	9940.0061	1
70E	FH-3 Center Mounting Bracket Steel (Specify Model).....	9940.0062	1
70E	FH-3 Center Mounting Bracket Aluminum (Specify Model).....	9940.0066	1
81	FH-304 SST Roller Rod (Specify Length)	9940.0009	2
91	FH-305 2" SST Roller Tubing (Polished) (Specify Length).....	9940.0010	2
Complete Assemblies (Mounting brackets (70D and 70E) must be ordered separately)			
N/A	FH Double Captive Spool Assembly (Pair) (Less SST Roller, Rod & Trunnion Bearings)	9940.0093	1
N/A	FH-3 Complete Double Captive Roller & Spool Assembly (Specify Length).....	9939.0070	1

**Hannay ISO Parts Lists are available
at www.hannay.com**

FH-3 ROLLER MODELS



For all Roller models use p/n 9939.0070 and specify the FH/Reel Roller Model

FH Roller Model	Drum Length (in)	Roller Length "Z" w/ bushings (in)	Mtg. Hole "X" Dimension (in)
FH-306	6.0	6.5	9.25
FH-307.5	7.5	8.0	10.75
FH-308	8.0	8.5	11.25
FH-309.5	9.5	10.0	12.75
FH-310	10.0	10.5	13.25
FH-311.5	11.5	12.0	14.75
FH-312	12.0	12.5	15.25
FH-313.5	13.5	14.0	16.75
FH-314	14.0	14.5	17.25
FH-315.5	15.5	16.0	18.75
FH-316	16.0	16.5	19.25
FH-317.5	17.5	18.0	20.75
FH-318	18.0	18.5	21.25
FH-320	20.0	20.5	23.25
FH-322	22.0	22.5	25.25
FH-324	24.0	24.5	27.25
FH-326	26.0	26.5	29.25
FH-328	28.0	28.5	31.25
FH-329.5	29.5	30.0	32.75
FH-330	30.0	30.5	33.25
FH-338	38.0	38.5	41.25
All other lengths	---	---	---

NOTES: 1) Actual roller tubing cut length is 5/8" less than "Z" dimension.
 2) FH cross-bracket piece is always 6" longer than drum length of reel.