

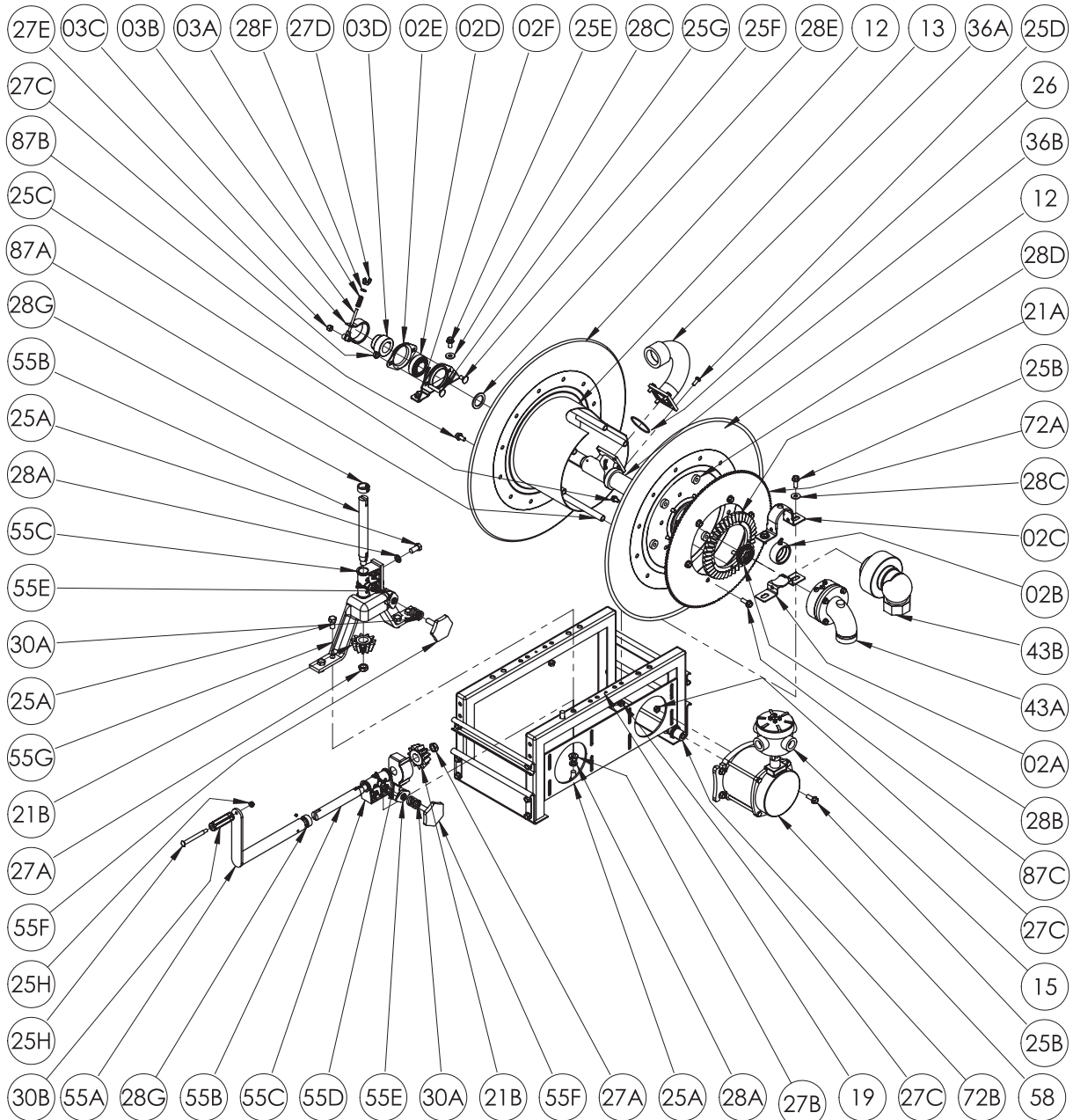


Hannay Reels®

The reel leader.

Hannay Reels, 553 State Route 143
 Westerlo, NY 12193
 Telephone 518-797-3791 • Toll Free 1-877-GO-REELS (467-3357)
 FAX 1-800-REELING (733-5464)
 INT'L FAX (518) 797-3259
 Website: www.hannay.com
 E-mail: reels@hannay.com

ISO 41 PARTS LIST 1 1/2" HOSE REELS With Fabricated Frame & Ball Bearing Swivel Joint



When ordering parts BE SURE TO SPECIFY COMPLETE MODEL NUMBER and SERIAL NUMBER OF REEL. USE PART NUMBER!

Item No.	Description	PART NUMBER	Quantity
02A	Greasable Bearing Holder (Bottom Strap)	9902.2950	1
02B	1-1/2" Bronze Bearing Insert (W/ Grease Fitting)	9902.1700	1
02C	Greasable Bearing Holder (Top Strap)	9902.2955	1
02D	1" Self Aligning Bearing Insert (Plated)	9902.1500	1
02E	Self Aligning Bearing Holder (Small Piece).....	9902.2800	1
02F	Self-Aligning Pillow Block	9902.2900	1
02G	1-1/2" Strap Bearing Complete (Includes 02A,02B and 02C).....	9902.1610	1

PARTS LIST
ISO-41
1-1/2" Hose Reel

When ordering parts

BE SURE TO SPECIFY COMPLETE MODEL NUMBER and SERIAL NUMBER OF REEL.

USE PART NUMBER!

Item No.	Description	PART NUMBER	Quantity
02H	1" Self Aligning Bearing Complete (Includes 02D, 02E, 02F, 25F and 27C)..	9902.1400	1
03A	SST Comet Brake Tension Adjustment Spring.....	9947.0096	1
03B	1/4"-20 Comet Brake Tension Adjustment Rod.....	9947.0094	1
03C	Comet Brake Strap.....	9947.0091	1
03D	Comet Brake Hub for 1" Pipe.....	9947.0038	1
03E	Comet Brake Tension Adjuster (Includes 03A, 03B, 27E and 28F).....	9947.0092	1
6	#35 Chain (Not Shown).....	Specify Model	1
12	19-21 Disc (18-3/4" Dia.) ~Spec Model & Front or Back.....	9903.0821	2
12	23-24 Disc (22-3/4" Dia.) ~Spec Model & Front or Back.....	9903.1121	2
12	25-26 Disc (24-3/4" Dia.) ~Spec Model & Front or Back.....	9903.1321	2
12	30-31 Disc (28-3/4" Dia.) ~Spec Model & Front or Back.....	9903.1621	2
13	10-1/2" Diameter Drum ~Spec Model.....	9905.3131	1
15	Red Dot Round Junction Box, Cover and 2 Plugs.....	9917.0061	1
19	1-1/2" Steel Rollform Frame.....	9908.0155	1
21A	H-26 Ring Gear.....	9914.0372	1
21A	H-28 Ring Gear.....	9914.0382	1
21B	H-27 Pinion Gear (Nylon Composite).....	9914.0393	1
21B	H-29 Pinion Gear (Brass).....	9914.0404	1
25A	1/2"-13 x 1" Hex Head Bolt.....	9904.1402	6
25B	3/8"-16 x 1" Spinlock Bolt.....	9904.2202	6
25C	5/16"-18 x 1/2" Spinlock Bolt (For H-26 Ring Gear).....	9904.2158	5
25D	5/16"-18 x 3/4" Hex Head Cap Screw.....	9904.1101	4
25E	3/8"-16 x 3/4" Spinlock Bolt.....	9904.2201	2
25F	3/8"-16 x 3/4" Carriage Bolt.....	9904.0201	1
25G	3/8"-16 x 2" Carriage Bolt.....	9904.0206	1
25H	3/8" Shoulder Bolt w/ Nut.....	9914.0511	1
26	2-3/8" I.D. O-Ring for 1-1/2" Riser.....	9965.0028	1
27A	5/8"-16 SAE Head Nead Nut (ESNA).....	9904.5600	1
27B	1/2"-13 Spinlock Nut.....	9904.5400	4
27C	3/8"-16 Spinlock Nut.....	9904.6200	10
27D	1/4"-20 Comet Brake Wing Nut.....	9947.0095	1
27E	3/8"-16 ESNA Locknut.....	9958.0040	1
28A	1/2" Lock Washer.....	9954.0030	2
28B	1-1/2" Hub Spacer Washer.....	9954.0022	4
28C	3/8" Flat Washer.....	9954.0007	4
28D	Sprocket Spacer (5/16" Thick).....	9954.0017	6
28E	1" Hub Spacer Washer.....	9954.0021	1
28F	1/4" Flat Washer.....	9954.0005	1
28G	PSC-1 Pinion Shaft Collar w/ Set Screws.....	9914.0351	1
30A	Coil (H-31) Brake Spring.....	9914.0451	1
30B	Black Plastic Crank Handle.....	9914.0506	1
30C	Woodruff Key #9 (3/16" x 3/4") for Motor and Comet Brake (Not Shown).....	9916.0080	2
36A	Riser (Steel) ~Spec Model, Riser Fitting Size & Thread (Includes 26).....	9901.3760	1
36A	Riser (Aluminum for Jet Fuel) ~Riser Fitting Size (Includes 26).....	9901.3762	1
36B	1-1/2" Flange Steel Pipe Hub ~Spec Model.....	9901.3640	1
36B	1-1/2" Flange Aluminum (For Jet Fuel) Pipe Hub ~Spec Model.....	9901.3642	1
43A	1-1/2" 90 Degree FxFxVIC WHJ-1590 JT (BUNA Packing).....	9930.4210	1
43A	1-1/2" 90 Degree FxFxVIC WHJ-1590 JT (Viton Packing).....	9930.4220	1
43A	1-1/2" 90 Degree FxFxVIC WHJ-1590AL JT (BUNA-N Packing) (For Jet Fuels)	9930.4312	1
43B	1-1/2" 90 Degree FxF Full Circle JT (For LPG Gas).....	9930.0531	1
55A	H-18 Crank Handle (10" Length) Complete (Includes 25I and 30B).....	9914.0011	1
55B	Pinion Shaft ~Spec Length.....	9914.0250	1
55C	H-2A Pinion Shaft Bearing.....	9914.0243	1
55D	Gear Guard w/ Pad.....	9914.0618	1
55E	H-3 Brake Pad.....	9914.0433	1
55F	H-30A Brass Brake Wheel.....	9914.0413	1
55G	Vertical Rewind Bracket, Per P55A-00050.....	9914.0233	1
58	SX-001 12V DC 1/2 HP Explosion Proof Motor.....	9915.0003	1
72A	112T35 Disc Sprocket (19-21 Discs).....	9910.1321	1
72A	138T35 Disc Sprocket (23-24 and 25-26 Discs).....	9910.1423	1
72A	180T35 Disc Sprocket (30-31 Discs).....	9910.1526	1
72B	11T35 Motor Sprocket, 1-5/16" Long.....	9910.1118	1
87A	Anodized Threaded Spacer Pipe.....	Specify Model	6
87B	3/8"-16 x 3/4" Spinlock Bolt (For Use with Anodized Threaded Spacer Pipe)	9904.2201	2
87C	3/8"-16 x 1" Spinlock Bolt (For Use with Anodized Threaded Spacer Pipe)...	9904.2202	6
87D	3/8" Aluminum Pipe Drum Spacers ~Spec Length (Not Shown).....	9904.3200	6
87E	3/8"-16 Carriage Bolt w/ Nut (3/8" Aluminum Pipe Drum Spacers) (Not Shown)	Specify Model	6