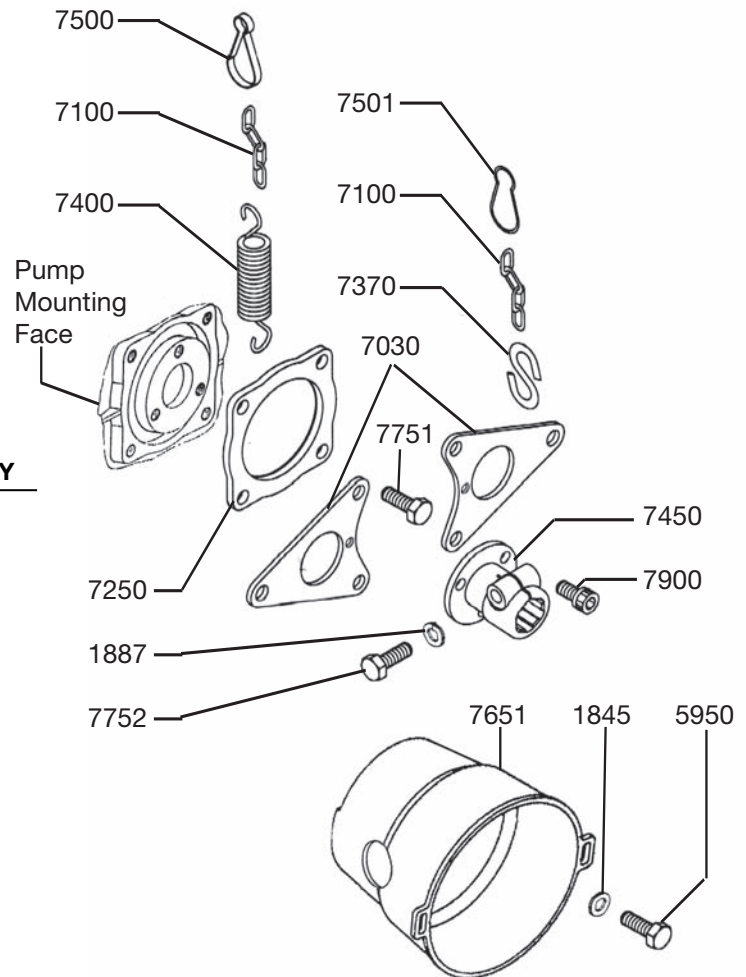




7752.A2 Female PTO Shaft Kit

Installation Instructions & Parts List



REF#	PART#	DESCRIPTION	QTY
1845	1403.10	Washer	2
1887	1411.04	Lock Washer	1
5950	1805.24	Bolt	2
5957	1804.56	Hex Bolt	1
7030	0106.13	Torque Arm Bracket	2
7100	0230.02	Chain	2
7250	0501.02	Seal Retainer Flange	1
7370	0609.01	S-Hook	1
7400	0901.28	Spring	1
7450	0905.09	Female PTO Adapter	1
7500	0910.01	Spring Clip	1
7501	0910.02	Spring Clip	1
7651	1219.04	PTO Safety Shield	1
7751	1804.07	Hex Bolt	4
7752	1804.56	Hex Bolt	1
7900	1805.04	Allen Bolt	3

INSTALLATION INSTRUCTIONS

NOTE - USE BLUE THREADLOCKER OR EQUIVALENT ON ALL BOLTS.

1. Attach the female PTO adapter (Ref #7450) to the pump crankshaft using the (3) Allen Bolts. (Ref #7900).
2. Position seal retainer flange (Ref #7250) onto pump mounting face. Install (2) torque arm brackets (Ref #7030) onto seal retainer flange, as shown above, using the (4) hex bolts (Ref #7751) provided.
3. Install PTO safety shield (Ref #7651) to torque arm brackets with the (2) hex bolts (Ref #5950) and (2) washers (Ref #1845) provided.
4. Before installing pump onto PTO shaft, inspect PTO shaft for wear or damage. **NEVER INSTALL THE PUMP ON A WORN OR DAMAGED PTO SHAFT.**
5. Slide pump assembly onto PTO shaft and install hex bolt (Ref #7752) and lock washer (Ref #1887). **NOTE** - There is an access hole in the PTO safety shield provided for this purpose.
6. Secure chains to tractor with spring clips (Ref # 7500 & 7501) to prevent rotation during operation. **WARNING - To prevent serious injury, NEVER operate the pump without the spring clips securely fastened to the tractor.**

NOTE: To prevent serious injury, PTO drive pumps must NEVER be operated without PTO Safety Shield, (Ref # 7651) installed.