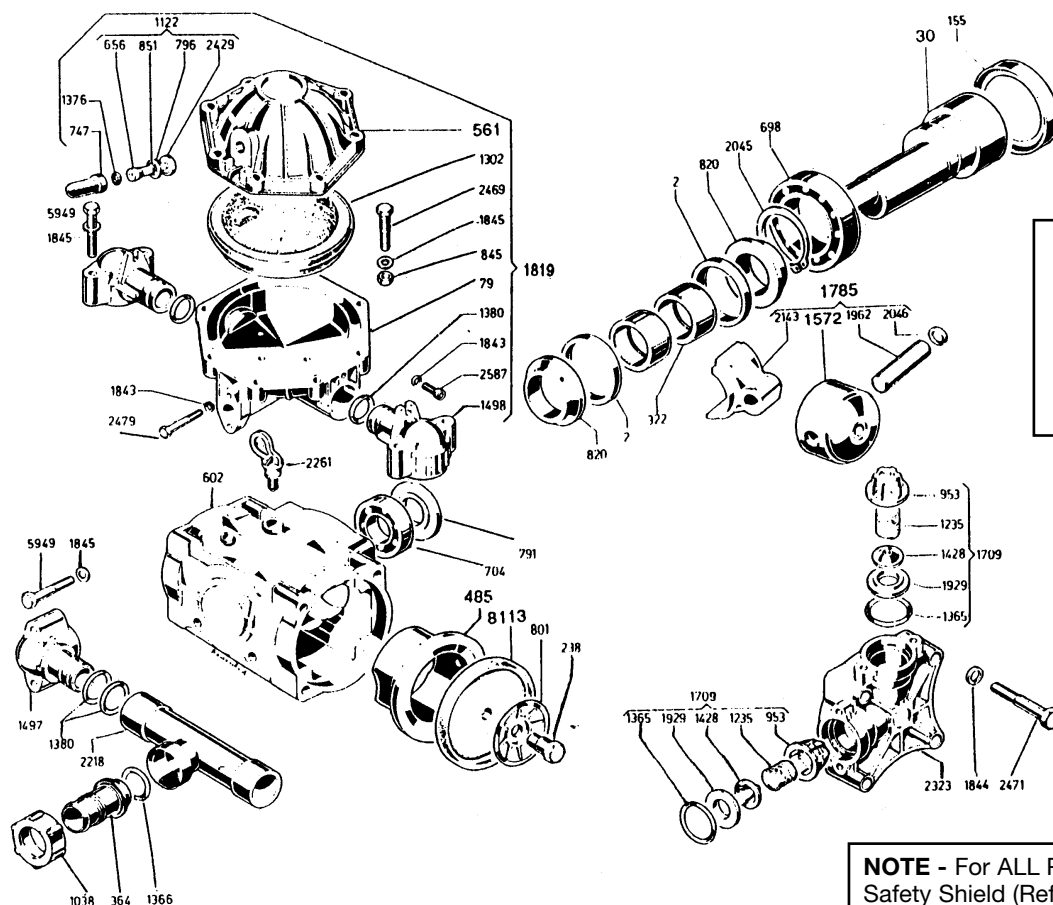




# ALFA-55

## Exploded View Diagram and Parts List



### ALFA-55 PUMPS

Require 18 oz.

**UDOR LUBE,**

or SAE 30W

Non-detergent Oil

**NOTE** - For ALL PTO Drive Applications, Safety Shield (Ref. #7650, Part #1219.02) is Recommended.

REF#	PART#	DESCRIPTION	QTY.
2	0001.02	RETAINER RING	2
30	0002.11	CRANKSHAFT	1
79	0003.12	PRESSURE ACCUMULATOR	1
155	0007.01	SEAL	1
238	0102.03	DIAPHRAGM BOLT	2
322	0110.04	ROLLER BEARING	2
364	0202.51	SUCTION BARB	1
485	0206.10	PISTON SLEEVE	2
561	0208.25	ACCUMULATOR HEAD	1
602	0209.09	PUMP BODY	1
656	0211.05	AIR VALVE CAP	1
698	0214.01	BALL BEARING	1
704	0214.09	BALL BEARING	1
747	0218.01	AIR VALVE CAP	1
791	0301.10	WASHER	1
796	0301.19	VALVE DISK	1
801	0301.07	RETAINER WASHER	2
820	0302.01	SPACER	2
845	0301.01	NUT	8
851	0303.30	AIR VALVE NUT	1
953	0601.10	VALVE CAGE	4
1038	0604.18	SUCTION NUT	1
1122	0608.15	AIR VALVE ASSEMBLY	1
1235	0901.35	VALVE SPRING	4
*1302	0903.23	ACCUMULATOR DIAPHRAGM	1
*1365	1101.01	O-RING	4
1366	1101.02	O-RING	1
1376	1101.16	O-RING	1
1380	1101.25	O-RING	6

REF#	PART#	DESCRIPTION	QTY.
1428	1201.03	VALVE POPPET	4
1497	1203.36	SUCTION ELBOW	2
1498	1203.37	DISCHARGE ELBOW	2
1572	1205.10	ALUMINUM PISTON	2
1709	6006.08	VALVE ASSEMBLY	4
1785	6015.10	PISTON AND ROD ASSEMBLY	2
1819	6031.18	ACCUMULATOR ASSEMBLY	1
1843	1403.07	WASHER	4
1844	1403.09	WASHER	8
1845	1403.10	WASHER	16
1929	1501.17	VALVE SEAT	4
1962	1502.01	CONNECTING ROD PIN	2
2045	1506.01	SNAP RING	1
2046	1506.02	SNAP RING	4
2143	1519.10	CONNECTING ROD	2
2218	1602.14	TUBE	1
2261	1603.23	PLUG	1
2323	1604.46	HEAD	2
2429	1803.02	AIR VALVE	1
2466	1804.06	BOLT	4
2469	1804.18	BOLT	8
2471	1804.29	BOLT	8
2479	1804.74	BOLT	2
2481	1804.07	BOLT	4
2587	1805.20	BOLT	2
5949	1804.72	BOLT	8
*8113	0903.34	DESMOPAN PISTON DIAPHRAGM	2

\* PARTS INCLUDED IN DIAPHRAGM REPAIR KIT - PART #8700.03  
DIAPHRAGM REPAIR KIT AVAILABLE IN BUNA-N PART #8700.13



# ALFA-55

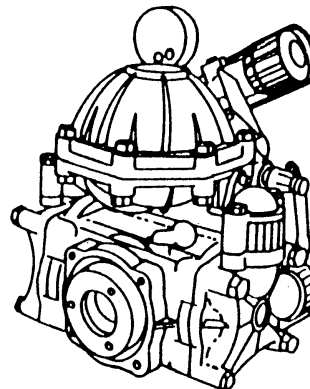
## Medium Pressure Diaphragm Pumps

UDOR medium pressure diaphragm pumps are excellent for various horticultural, agricultural, lawn care, nursery and turf spraying applications. Simplicity of design and common parts allow easy and affordable maintenance. Built-in pulsation damper, control valve & pressure gauge is standard on all models. Standard pumps are designed to accommodate several drive options such as 1 3/8" six spline male shaft, 1 3/8" six spline female adapter, 1" solid keyed shaft, and 6:1 gear reducer for direct engine mounting.

NOTE: For industrial uses and spraying applications not listed, consult UDOR U.S.A.

### DRIVE OPTIONS

PART NUMBER	DESCRIPTION
5033.A4:	7.5, 8 & 9 HP GEAR REDUCTION
7702.01:	1 3/8" SIX SPLINE MALE SHAFT, BASE & BOLTS
7751.A1:	1" SOLID KEYED SHAFT, BASE & BOLTS
7752.A2:	1 3/8" SIX SPLINE FEMALE ADAPTER & BOLTS, TORQUE ARM, CHAINS & SAFETY SHIELD



### FEATURES

- MAXIMUM FLOW - 16.5 GPM
- MAXIMUM PRESSURE - 560 P.S.I.
- MAXIMUM SPEED - 550 R.P.M.
- MAXIMUM TEMP - 140° F.
- SHIPPING WEIGHT: 37 LBS.
- DIMENSIONS: LENGTH: 11"  
WIDTH: 11.2"  
HEIGHT: 11.8"
- PORTS: 1 1/4" HOSE BARB INLET, TWO BALL VALVE CONTROLLED, 1/2" HOSE BARB OUTLETS, 3/4" HOSE BARB BYPASS
- BODY: ALUMINUM
- LIQUID HANDLING PARTS: PLASTIC COATED ALUMINUM, GLASS FILLED NYLON AND STAINLESS STEEL

NOTE: PROTECT PUMP FROM FREEZING. IF FREEZING CONDITIONS EXIST, FLUSH PUMP WITH A 50/50 MIXTURE OF ANTI-FREEZE AND WATER.