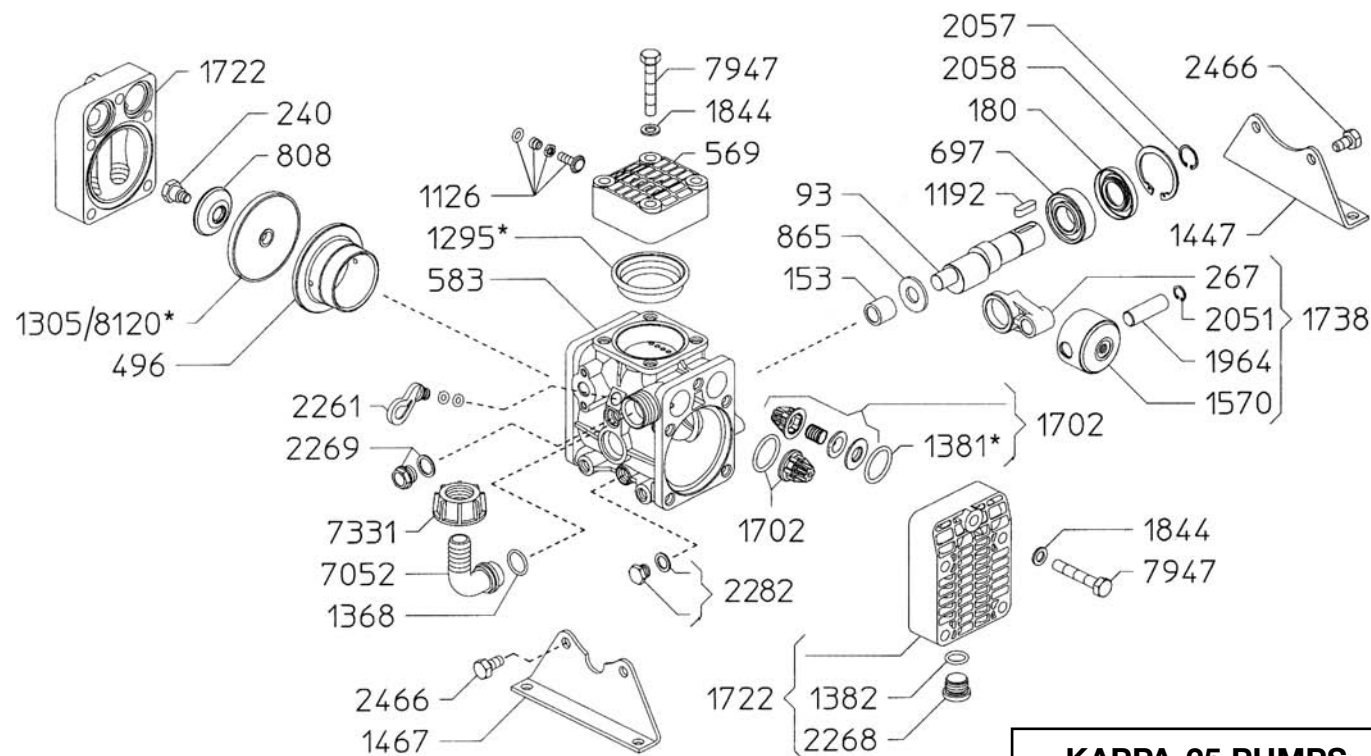




KAPPA-25

Exploded View Diagram and Parts List



KAPPA-25 PUMPS
 Require **12 oz.**
UDOR LUBE,
 or SAE 30W
 Non-detergent Oil

REF#	PART#	DESCRIPTION	QTY	REF#	PART#	DESCRIPTION	QTY
93	0002.D3	Crankshaft	1	1467	1202.47	Pump Rail w/ Notch	1
153	0006.15	Needle Bearing	1	1570	1205.07	Piston	2
180	0007.40	Shaft Seal	1	1702	6006.01	Valve Assembly	4
240	0102.04	Diaphragm Bolt	2	1722	6017.13	Pump Head	2
267	0103.54	Connecting Rod	2	1738	6015.50	Piston/Rod Assembly	2
496	0206.46	Piston Sleeve	2	1844	1403.09	Washer	14
569	0208.46	Accumulator Head	1	1964	1502.03	Wrist Pin	2
583	0209.83	Pump Body	1	2051	1506.15	Snap Ring	2
697	0214.18	Bearing	1	2057	1506.18	Snap Ring	1
808	0301.43	Diaphragm Washer	2	2058	1506.09	Snap Ring	1
865	0301.57	Spacer	1	2261	1603.23	Oil Plug	1
1126	0608.16	Air Valve Assembly	1	2268	1603.32	Head Plug	4
1192	0801.02	Key	1	2269	1603.33	Oil Sight Gauge	1
*1295	0903.08	Accumulator Diaphragm	1	2282	1603.50	Oil Drain Plug	1
1305	0903.43	Piston Diaphragm BUNA-N Optional	2	2466	1804.06	Rail Bolts	4
1368	1101.04	O-Ring	1	7052	0202.75	Suction Elbow	1
*1381	1101.27	O-Ring	4	7331	0604.36	Suction Nut	1
1382	1101.29	O-Ring	4	7947	1804.21	Head Bolt	14
1447	1202.02	Pump Rail	1	*8120	0903.50	DESMOPAN Diaphragm STANDARD	2

* Parts Included in Diaphragm Repair Kit - #8700.65.

KAPPA-25



KAPPA-25

Medium Pressure Diaphragm Pump

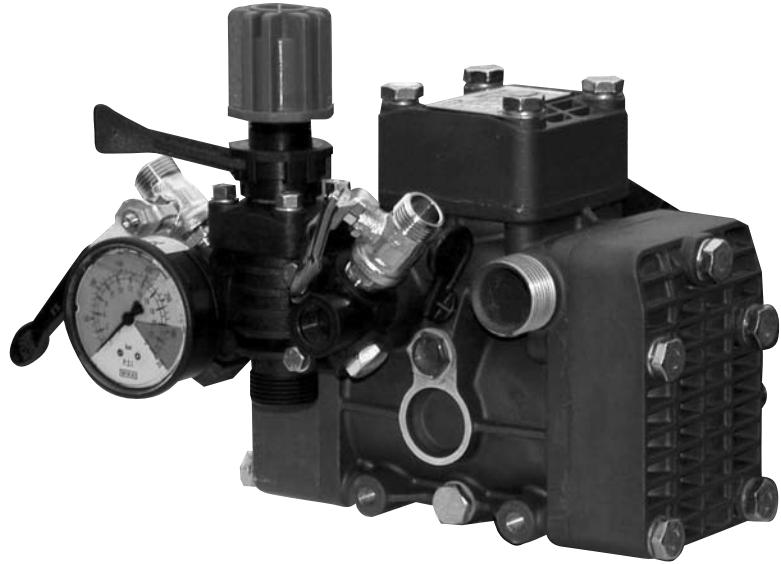
KAPPA-25 medium pressure, 2-cylinder diaphragm pumps are excellent choices for various horticulture, agricultural, Lawn care, pest control and turf spraying applications. They are also effectively used in other applications such as hydrostatic testing and cleaning. The KAPPA-25 pumps come standard with mounting rails and a 25mm solid keyed shaft.

KAPPA-25 pumps are constructed of anodized aluminum with anodized aluminum and stainless steel liquid handling parts. Built-in pulsation dampener, control valve and pressure gauge are standard on all models.

Drive options include:

5085.F7 3-5.5 HP Gear Reduction

For applications not listed, please consult UDOR U.S.A.



SPECIFICATIONS

Maximum Flow	7.0 GPM
Maximum Pressure	350 PSI
Maximum Pump Speed	540 RPM
Maximum Temperature	140° F
Ports	
Inlet	1" Hose Barb
Discharge	(2) 1/2" Hose Barbs, Ball Valve Controlled
Bypass	3/4" Hose Barb
Dimensions	L-12" x W-10" x H-11"
Weight	21 lbs.
Diaphragm Material	
Standard	DESMOPAN
Optional	BUNA-N

NOTE - Protect pumps from freezing. If freezing conditions exist, flush pump and system with a 50/50 mixture of antifreeze and water.

KAPPA-25