



OMEGA-140/CC

High Pressure Diaphragm Pump

OMEGA-140/CC 3-cylinder high pressure, high volume diaphragm pumps are excellent for various horticultural and agricultural spraying applications. Simplicity of design and common parts allow easy and affordable maintenance. Control valve, pulsation dampener and pressure gauge are standard.

The OMEGA-140/CC is constructed of plasticized aluminum, brass and stainless steel with plasticized aluminum, brass and stainless steel liquid handling parts.

For industrial uses and spraying applications not listed, please consult UDOR U.S.A. For all PTO drive applications safety shield part #1219.02 is recommended.

Splined Q-2 bushing for pulley drive is available upon request. For thru shaft protection part #1219.15 is recommended.



SPECIFICATIONS

| | |
|---|-------------------------|
| Maximum Flow | 39 GPM |
| Maximum Pressure | 700 PSI |
| Maximum Pump Speed | 540 RPM |
| Maximum Temperature | 140° F |
| Inlet Port Hose Barb | 1-1/2" |
| Outlet Ports | |
| Hose Barb (Ball Valve Controlled) | 1/2" (2) |
| FNPT | 3/4" (2) |
| Bypass Hose Barb | 1" |
| Dimensions | L-19.5" x W-15" x H-22" |
| Weight | 100 lbs. |
| Diaphragm Material | |
| Standard | DESMOPAN |
| Optional | BUNA-N |

NOTE - Protect pumps from freezing. If freezing conditions exist, flush pump and system a 50/50 mixture of anti-freeze and water.

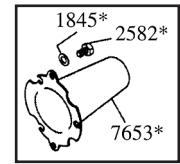
UDOR U.S.A., INC.

500 Apollo Drive
Lino Lakes, MN 55014
TEL. (651) 785-0666
FAX (800) 732-2670
www.udorusa.com

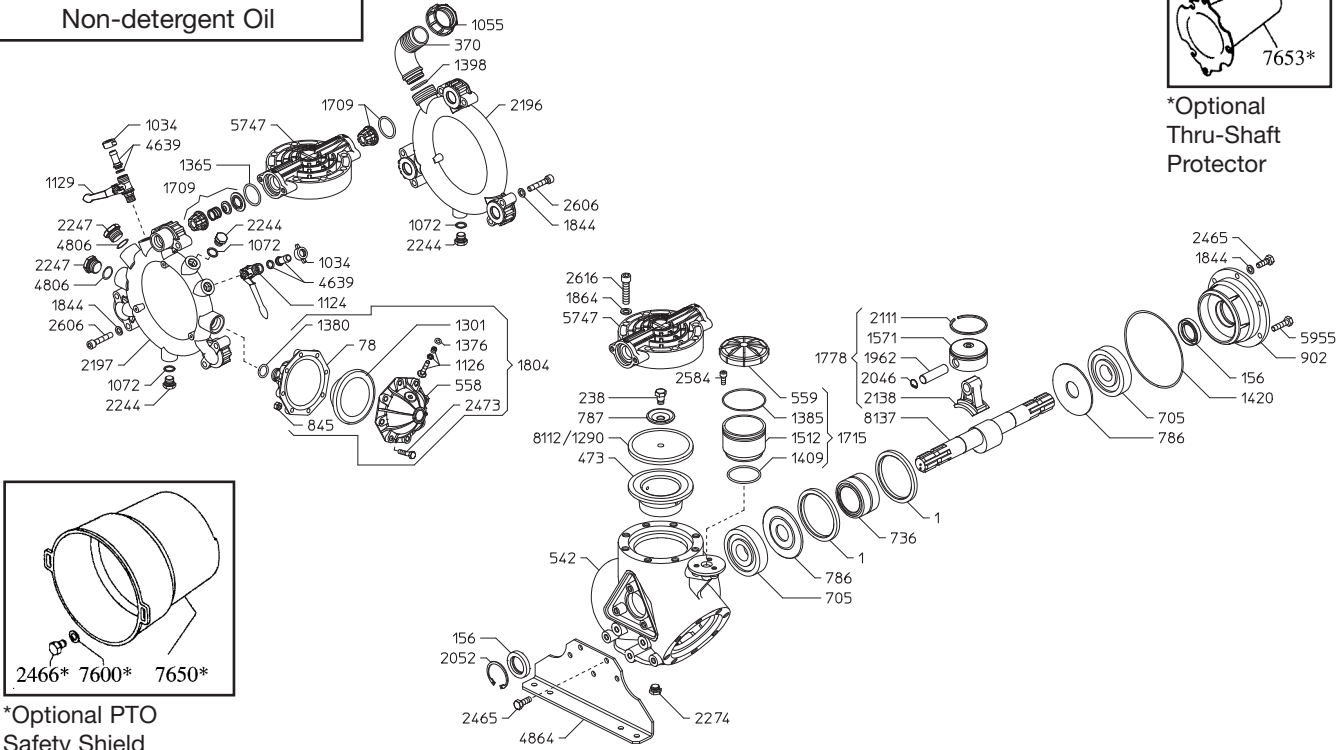
OMEGA-140/CC - Exploded View Diagram & Parts List

OMEGA-140/CC PUMPS

Require 87oz.
UDOR LUBE, or SAE 30W
Non-detergent Oil



*Optional
Thru-Shaft
Protector



*Optional PTO
Safety Shield

| REF# | PART# | DESCRIPTION | QTY | REF# | PART# | DESCRIPTION | QTY |
|--------|---------|--------------------------------|-----|--------|---------|--------------------------------------|-----|
| 1 | 0001.01 | Retainer Rings | 2 | 1715 | 6033.02 | Oil Reservoir Assy. | 1 |
| 78 | 0003.12 | Lower Accumulator | 1 | 1778 | 6015.01 | Piston/Rod Assy. | 3 |
| 156 | 0007.02 | Shaft Seal | 2 | 1804 | 6031.02 | Accumulator | 1 |
| 238 | 0102.03 | Diaphragm Bolt | 3 | 1844 | 1403.09 | Washer | 16 |
| 370 | 0202.72 | Suction Elbow | 1 | *1845 | 140310 | Washer | 3 |
| 473 | 0206.49 | Piston Sleeve | 3 | 1864 | 1403.45 | Washer | 24 |
| 558 | 0208.21 | Upper Accumulator | 1 | 1962 | 1502.01 | Wrist Pin | 3 |
| 542 | 0209.91 | Pump Body | 1 | 2046 | 1506.02 | Snap Ring | 6 |
| 559 | 0208.22 | Oil Cap | 1 | 2052 | 1506.16 | Snap Ring | 1 |
| 705 | 0214.11 | Ball Bearing | 2 | 2111 | 1509.05 | Piston Ring | 3 |
| 736 | 0216.02 | Needle Bearing | 1 | 2138 | 1519.03 | Connecting Rod | 3 |
| 786 | 0301.02 | Spacer | 2 | 2196 | 1601.28 | Suction Manifold | 1 |
| 787 | 0301.03 | Diaphragm Washer | 3 | 2197 | 1605.32 | Discharge Manifold | 1 |
| 845 | 0303.01 | Nut | 8 | 2244 | 1603.64 | Plug | 2 |
| 902 | 0501.46 | Bearing Flange | 1 | 2247 | 1603.74 | Plug | 2 |
| 1034 | 0604.09 | Barb Nut | 2 | 2465 | 1804.03 | Bolt | 8 |
| 1055 | 0604.50 | Suction Nut | 1 | *2466 | 1804.06 | Bolt | 3 |
| 1072 | 0605.09 | Gasket | 2 | 2274 | 1603.44 | Drain Plug | 1 |
| 1124 | 0608.45 | Ball Valve Right | 1 | *2582 | 1805.04 | Bolt | 3 |
| 1126 | 0608.16 | Air Valve Assy. | 1 | 2584 | 1805.06 | Bolt | 3 |
| 1129 | 0608.46 | Ball Valve Left | 1 | 2606 | 1805.29 | Manifold Bolt | 12 |
| 1290 | 0903.01 | Piston Diaphragm BUNA optional | 3 | 2616 | 1805.38 | Head Bolt | 24 |
| **1301 | 0903.16 | Accumulator Diaphragm | 1 | 4639 | 0202.19 | Discharge Barb | 2 |
| **1365 | 1101.01 | O-Ring | 6 | 4806 | 1101.G3 | O-Ring | 2 |
| 1376 | 1101.16 | O-Ring | 1 | 4864 | 1202.82 | Pump Rail | 2 |
| 1380 | 1101.25 | O-Ring | 1 | 5747 | 1604.B7 | Pump Head | 3 |
| 1385 | 1101.32 | O-Ring | 1 | 5955 | 1804.23 | Bolt | 2 |
| 1398 | 1101.42 | O-Ring | 1 | *7600 | 1403.36 | Washer | 3 |
| 1409 | 1101.68 | O-Ring | 1 | *7650 | 1219.02 | PTO Safety Shield *optional | 1 |
| 1420 | 1101.71 | O-Ring | 1 | *7653 | 1219.15 | Shaft Protector Thru Shaft *optional | 1 |
| 1512 | 1203.30 | Oil Reservoir | 1 | **8112 | 0903.33 | Diaphragm DESMOPAN Standard | 3 |
| 1571 | 1205.08 | Piston | 3 | 8137 | 0002.A6 | Crankshaft | 1 |
| 1709 | 6006.08 | Valve Assy. | 6 | | | | |

** Parts Included in Diaphragm Repair Kit - #8700.06. (Also available in BUNA-N - #8700.17.)