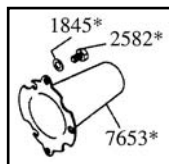




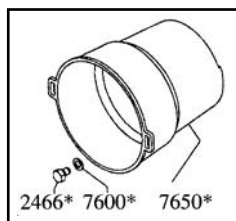
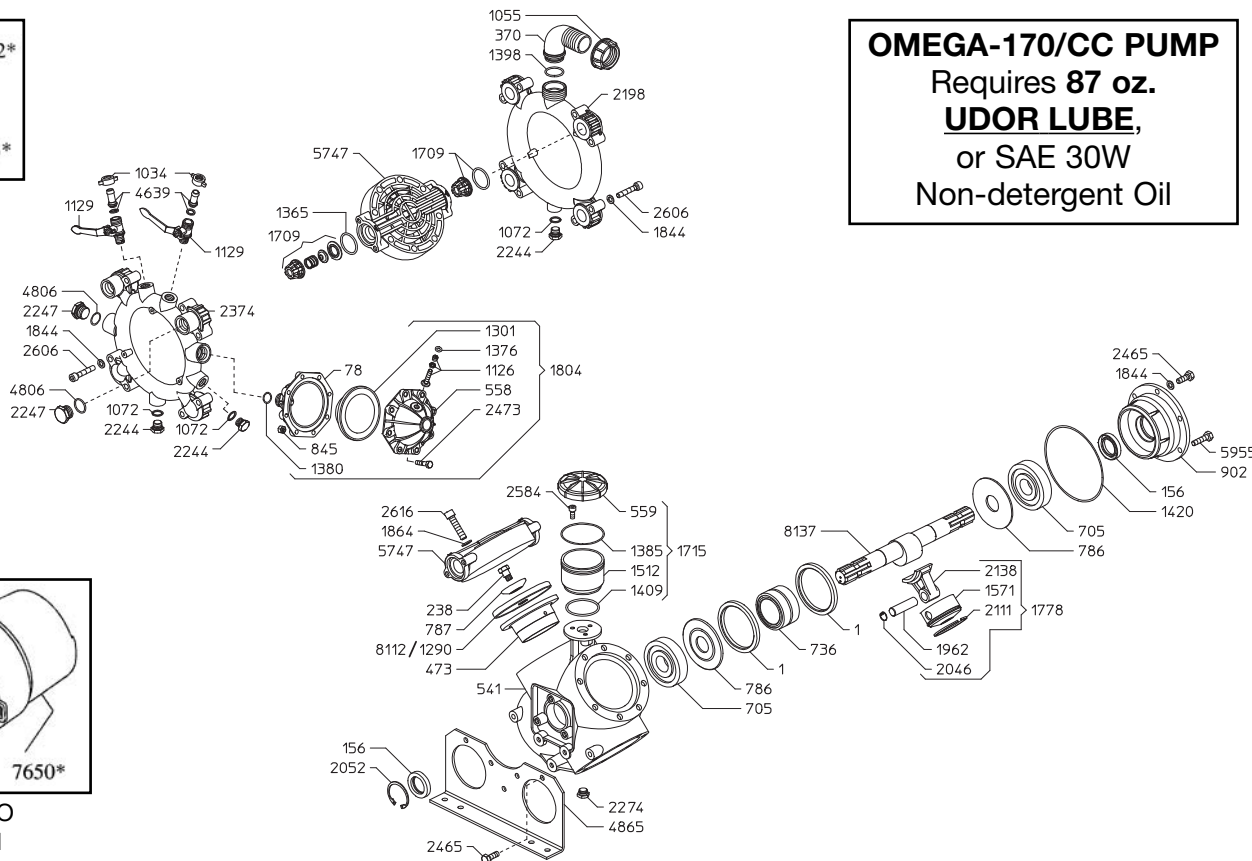
OMEGA-170/CC

Exploded View Diagram and Parts List

OMEGA-170/CC PUMP
 Requires **87 oz.**
UDOR LUBE,
 or SAE 30W
 Non-detergent Oil



*Optional Thru-Shaft Protector



*Optional PTO Safety Shield

REF#	PART#	DESCRIPTION	QTY	REF#	PART#	DESCRIPTION	QTY
1	0001.01	Retainer Ring	2	1778	6015.01	Piston/Rod Assy.	4
78	0003.10	Lower Accumulator	1	1804	6031.02	Accumulator Assy.	1
156	0007.02	Shaft Seal	2	1844	1403.09	Washer	20
238	0102.03	Diaphragm Bolt	4	*1845	1403.10	Washer	3
370	0202.72	Suction Elbow	1	1864	1403.45	Washer	32
473	0206.49	Piston Sleeve	4	1962	1502.01	Wrist Pin	4
541	0209.92	Crankcase	1	2046	1506.02	Snap Ring	8
558	0208.21	Upper Accumulator	1	*2052	1506.16	Snap Ring	1
559	0208.22	Oil Cap	1	2111	1509.05	Piston Ring	4
705	0214.11	Ball Bearing	2	2138	1519.03	Connecting Rod	4
736	0216.02	Needle Bearing	1	2198	1601.29	Suction Manifold	1
786	0301.02	Spacer	2	2244	1603.64	Plug	2
787	0301.03	Diaphragm Washer	4	2247	1603.74	Plug	2
845	0303.01	Nut	8	2274	1603.44	Drain Plug	1
902	0501.46	Bearing Flange	1	2374	1605.33	Discharge Manifold	1
1034	0604.09	Barb Nut	2	2465	1804.03	Bolt	9
1055	0604.50	Suction Nut	1	*2466	1804.06	Bolt	3
1072	0605.09	Gasket	2	2473	1804.54	Bolt	8
1126	0608.16	Air Valve Assy.	1	*2582	1805.04	Bolt	3
1129	0608.46	Ball Valve Left	2	2584	1805.06	Bolt	3
1290	0903.01	Piston Diaphragm BUNA optional	4	2606	1805.29	Manifold Bolt	16
**1301	0903.16	Accumulator Diaphragm	1	2616	1805.38	Head Bolt	32
**1365	1101.01	O-Ring	8	4639	0202.19	Discharge Barb	2
1376	1101.16	O-Ring	1	4806	1101.G3	O-Ring	2
1380	1101.25	O-Ring	1	4865	1202.83	Pump Rail	2
1385	1101.32	O-Ring	1	5747	1604.B7	Pump Head	4
1398	1101.42	O-Ring	1	5955	1804.23	Bolt	2
1409	1101.68	O-Ring	1	*7600	1403.36	Washer	3
1420	1101.71	O-Ring	1	*7650	1219.02	PTO Safety Shield *optional	1
1512	1203.30	Oil Reservoir	1	*7653	1219.15	Shaft Protector Thru Shaft *optional	1
1571	1205.08	Piston	4	**8112	0903.33	Diaphragm DESMOPAN Standard	4
1709	6006.08	Valve Assy.	8	8137	0002.A6	Crankshaft	1
1715	6033.02	Oil Reservoir Assy.	1				

* Parts Included in Diaphragm Repair Kit - #8700.07. (Also available in BUNA-N - #8700.18.)

OMEGA-170/CC



OMEGA-170/CC

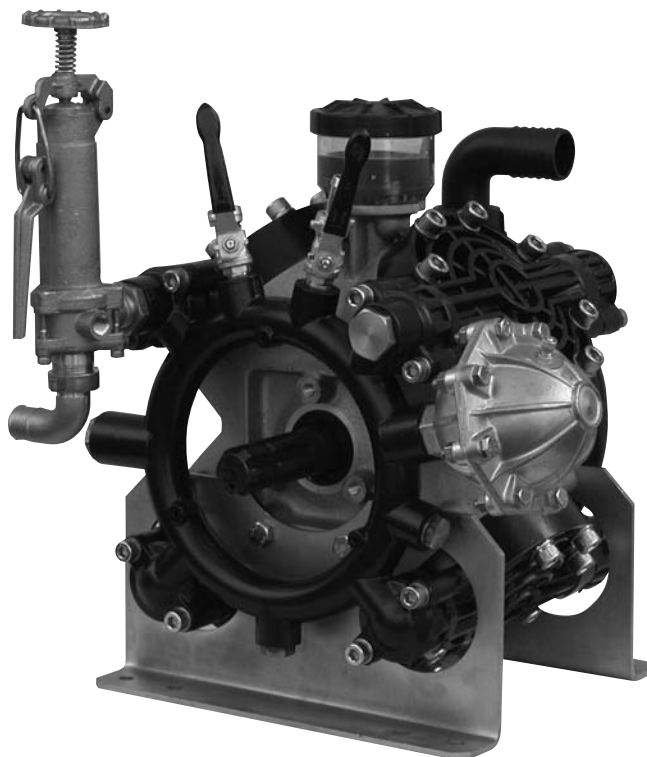
High Pressure Diaphragm Pump

OMEGA-170/CC 4-cylinder high pressure, high volume diaphragm pumps are excellent for various horticultural and agricultural spraying applications. Simplicity of design and common parts allow easy and affordable maintenance. Control valve, pulsation dampener and pressure gauge are standard.

The OMEGA-170/CC is constructed of plasticized aluminum, brass and stainless steel with plasticized aluminum, brass and stainless steel liquid handling parts.

For industrial uses and spraying applications not listed, please consult UDOR U.S.A. For all PTO drive applications safety shield part #1219.02 is recommended.

Splined Q-2 bushing for pulley drive is available upon request. For thru shaft protection part #1219.15 is recommended.



SPECIFICATIONS

Maximum Flow	46 GPM
Maximum Pressure	700 PSI
Maximum Pump Speed	540 RPM
Maximum Temperature	140° F
Inlet Port Hose Barb	1-1/2"
Outlet Ports	
Hose Barb (Ball Valve Controlled)	1/2" (2)
FNPT	3/4" (2)
Bypass Hose Barb	1"
Dimensions	L-21.9" x W-15" x H-19"
Weight	120 lbs.
Diaphragm Material	
Standard	DESMOPAN
Optional	BUNA-N

NOTE - Protect pumps from freezing. If freezing conditions exist, flush pump and system with a 50/50 mixture of antifreeze and water.