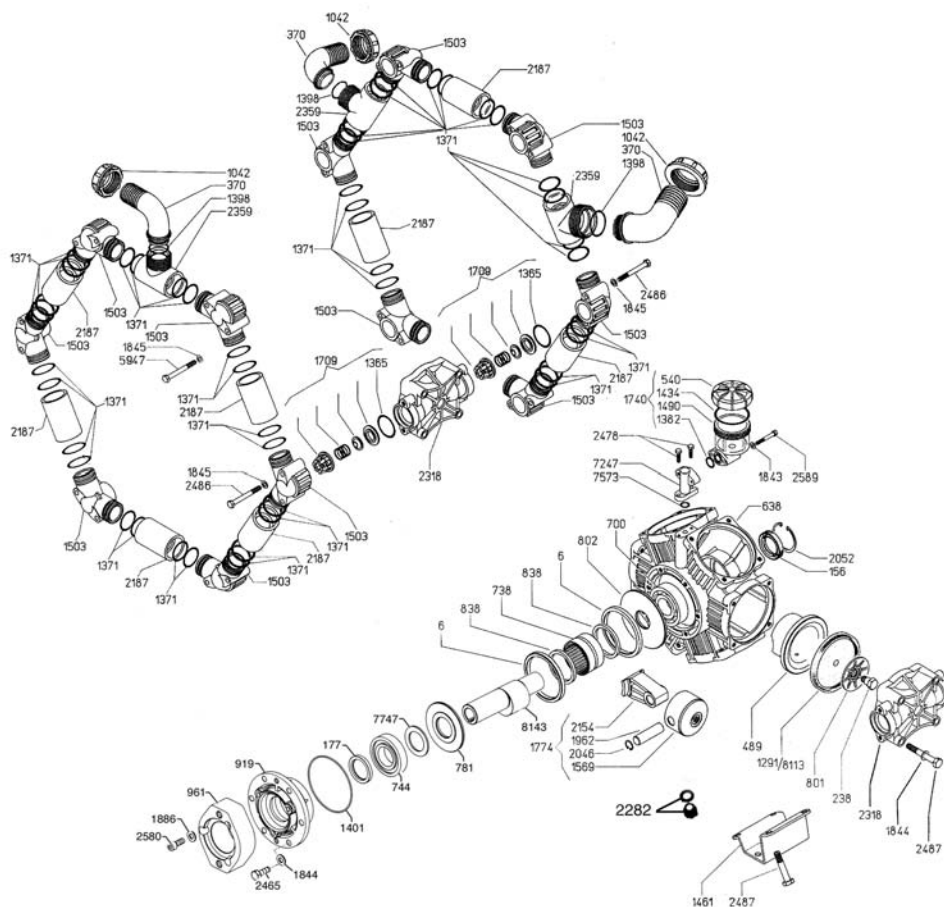




RO-250 HYD

Exploded View Diagram and Parts List

**RO-250 HYD
PUMP**
Requires **90 oz.**
UDOR LUBE,
or SAE 30W
Non-detergent Oil



RO-250 HYD

REF#	PART#	DESCRIPTION	QTY	REF#	PART#	DESCRIPTION	QTY
6	0001.08	Retainer Ring	2	1569	1205.06	Piston	6
156	0007.02	Seal	1	1709	6006.08	Valve Assembly	12
177	0007.41	Seal	1	1740	6033.01	Oil Reservoir Assembly	1
238	0102.03	Diaphragm Bolt	6	1774	6015.32	Piston & Rod Assembly	6
370	0202.78	1-1/2" Hose Barb Elbow	3	1843	1403.07	Washer	2
489	0206.14	Piston Sleeve	6	1844	1403.09	Washer	30
540	0208.98	Oil Reservoir Cap	1	1845	1403.10	Washer	36
638	0209.49	Pump Body	1	1886	1411.03	Washer	3
700	0214.04	Ball Bearing	1	1962	1502.02	Connecting Rod Pin	6
738	0216.07	Bearing	1	2046	1506.02	Snap Ring	12
744	0214.14	Bearing	1	2052	1506.16	Snap Ring	1
781	0301.48	Spacer	1	2154	1519.21	Connecting Rod	6
801	0301.07	Retainer Washer	6	2187	1601.16	Manifold Tube	9
802	0301.28	Crankshaft Washer	1	2282	1603.50	Drain Plug	1
838	0302.59	Rod Spacer	2	2318	1604.36	Head	6
919	0501.67	Bearing Flange	1	2359	1605.20	Discharge / Inlet Tube	3
961	0501.01	Adapter Flange	1	2465	1804.03	Bolt	6
1042	0604.50	Barb Nut	3	2478	1804.68	Bolt	2
1083	0605.49	Gasket	1	2486	1804.79	Bolt	24
1291	0903.02	Piston Diaphragm, BUNA-N Optional	6	2487	1804.25	Bolt	24
*1365	1101.01	O-Ring	12	2580	1805.01	Bolt	3
1371	1101.07	O-Ring	48	2589	1805.31	Bolt	2
1382	1101.29	O-Ring	1	5947	1804.62	Bolt	12
1398	1101.42	O-Ring	3	7247	0501.91	Oil Reservoir Adapter	1
1401	1101.58	O-Ring	1	7573	1101.56	O-Ring	1
1434	1101.01	O-Ring	1	7747	1524.09	Spacer	1
1461	1202.38	Mounting Rail	2	*8113	0903.34	Piston Diaphragm, DESMOPAN Standard	6
1490	1203.27	Oil Sight Glass	1	8143	0002.A9	Crankshaft	1
1503	1203.42	Discharge / Inlet Manifold	12				

* Parts Included in Diaphragm Repair Kit - #8700.44. (Also available in BUNA-N - #8700.29.)



RO-250 HYD

Six Diaphragm, Low Pressure Pump

The RO-250/HYD is a six-diaphragm low pressure pump with plasticized aluminum heads and glass-filled nylon manifolds. These pumps work well for various horticultural and agricultural spraying applications. Simplicity of design and common parts allow easy and affordable maintenance. Liquid handling parts are plasticized aluminum, glass-filled nylon, and stainless steel.

The RO-250/HYD is driven by a 1" female keyed shaft with a two bolt "A"-mount flange.

A control unit is not included with the RO-250/HYD. Please consult UDOR U.S.A. Diaphragm Pump Catalog for an appropriate unit.

For industrial uses and spraying applications not listed please contact UDOR U.S.A.



RO-250 HYD

SPECIFICATIONS

Maximum Flow	65 GPM
Maximum Pressure.....	300 PSI
Maximum Pump Speed	540 RPM
Maximum Temperature	140° F
Ports	
Inlet.....	1-1/2" (2) Hose Barbs
Discharge.....	1-1/2" Hose Barb
Dimensions	L-11" x W-15.5" x H-18"
Weight	75 lbs.
Diaphragm Material	
Standard.....	DESMOPAN
Optional	BUNA-N

NOTE - Protect pumps from freezing. If freezing conditions exist, flush pump and system with a 50/50 mixture of antifreeze and water.