



RO-320/CC

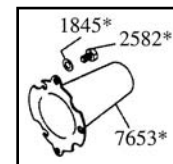
Exploded View Diagram and Parts List

RO-320/CC PUMP

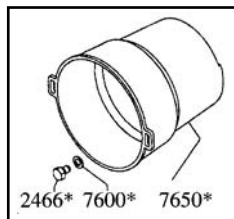
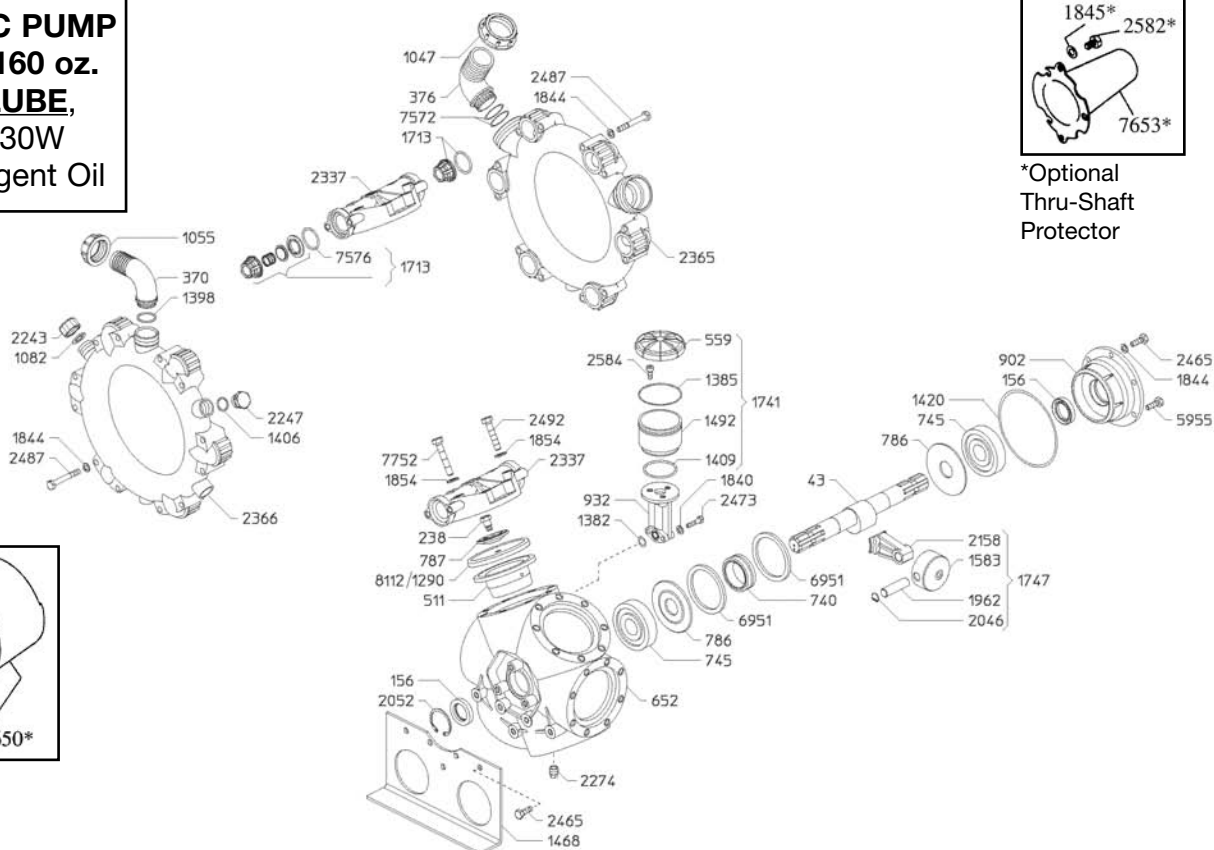
Requires 160 oz.

UDOR LUBE,
or SAE 30W

Non-detergent Oil



*Optional
Thru-Shaft
Protector



*Optional PTO
Safety Shield

REF#	PART#	DESCRIPTION	QTY	REF#	PART#	DESCRIPTION	QTY
43	02-0002.29	Crankshaft	1	1747	02-6015.39	Piston / Rod Assembly	6
156	02-0007.02	Seal	2	1844	02-1403.09	Washer	33
238	02-0102.03	Diaphragm Bolt	6	1845	02-1402.10	Washer	5
370	02-0202.78	1-1/2" Hose Barb	1	1854	02-1403.08	Washer	48
376	02-0202.79	Suction Barb	2	1962	02-1502.01	Wrist Pin	6
511	0206.40	Piston Sleeve	6	2046	02-1506.02	Snap Ring	12
559	02-0208.22	Oil Cap	1	2052	02-1506.16	Snap Ring	1
652	02-0209.65	Pump Body	1	2158	02-1519.25	Connecting Rod	6
740	02-0216.09	Bearing	2	2243	02-1603.A4	Cap	1
745	02-0214.11	Bearing	2	2247	02-1603.74	Plug	1
786	02-0301.02	Spacer	2	2274	02-1603.44	Oil Plug	1
787	02-0301.03	Diaphragm Washer	6	2337	02-1604.76	Head	6
902	02-0501.46	Flange	1	2365	02-1601.24	Inlet Manifold	1
932	02-0501.B1	Oil reservoir Extension	1	2366	02-1605.27	Outlet Manifold	1
1047	02-0604.39	Suction Nut	2	2465	02-1804.03	Bolt	9
1055	02-0604.50	Nut	1	2473	02-1804.54	Bolt	2
1082	02-0602.56	Washer	1	2487	02-1804.25	Manifold Bolt	24
1290	02-0903.01	Piston Diaphragm (BUNA) (optional)	6	2492	02-1804.87	Head Bolt	24
1382	02-1101.29	O-Ring	1	*2582	02-1805.04	Bolt (optional)	6
1385	02-1101.32	O-Ring	1	2584	02-1805.06	Bolt	3
1398	02-1101.42	O-Ring	1	5955	02-1804.23	Bolt	2
1406	02-1101.17	O-Ring	1	6951	02-0001.10	Retainer Ring	2
1409	02-1101.68	O-Ring	1	7572	02-1101.93	O-Ring	4
1420	02-1101.71	O-Ring	1	**7576	02-1101.C1	O-Ring	12
1468	02-1202.52	Mounting Rail	2	*7650	02-1219.02	PTO Safety Shield (optional)	1
1492	02-1203.30	Oil Reservoir	1	*7653	02-1219.15	Thru-Shaft Protector (optional)	1
1582	02-1205.41	Piston	6	7752	02-1804.16	Head Bolt	24
1713	02-6006.19	Valve Assembly	12	**8112	02-0903.33	Piston Diaphragm (DESMOPAN)	6
1741	02-6033.02	Oil Reservoir Assembly	1				

* Parts Included in Diaphragm Repair Kit - #02-8700.70.

RO-320/CC



RO-320/CC

Six Diaphragm, Low Pressure Pump

The RO-320/CC is a six-cylinder, low pressure, high volume diaphragm pumps are excellent for various horticultural and agricultural spraying applications. Simplicity of design and common parts allow easy and affordable maintenance. Dual 1-3/8", 6-spline male PTO shaft, is standard.

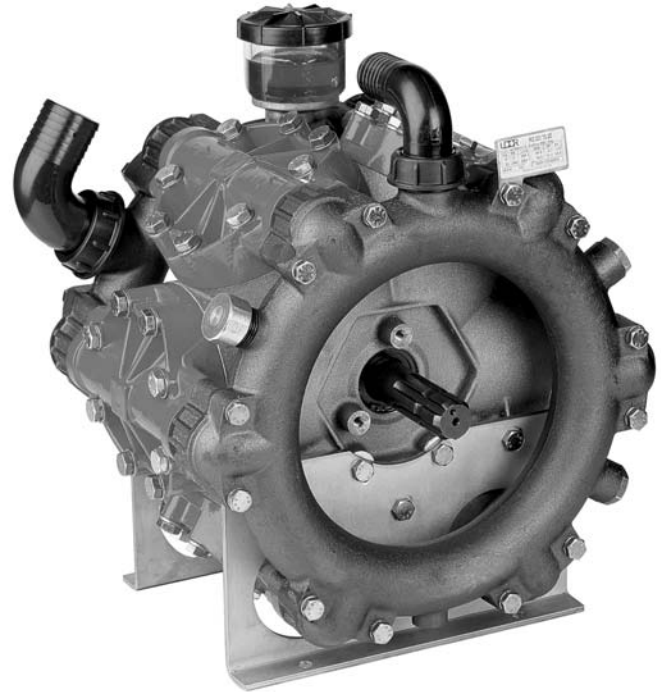
The RO-320/CC is constructed of plasticized aluminum, anodized aluminum and stainless steel with plasticized aluminum, anodized aluminum and stainless steel liquid handling parts.

For industrial uses and spraying applications not listed please contact UDOR U.S.A.

A control unit is not included with the RO-320/CC please consult UDOR U.S.A. Diaphragm Pump Catalog for an appropriate unit.

For ALL PTO drive applications, safety shield (Part #1219.02) is recommended.

For thru-shaft protection order Part #1219.15.



SPECIFICATIONS

Maximum Flow	84 GPM
Maximum Pressure.....	300 PSI
Maximum Pump Speed	540 RPM
Maximum Temperature	140° F
Ports	
Inlet	(2) 2" Hose Barb
Discharge.....	1-1/2" Hose Barb
Dimensions.....	L-15" x W-17" x H-21"
Weight	170 lbs.
Diaphragm Material	
Standard.....	DESMOPAN
Optional	BUNA-N

NOTE - Protect pumps from freezing. If freezing conditions exist, flush pump and system with a 50/50 mixture of antifreeze and water.

RO-320/CC