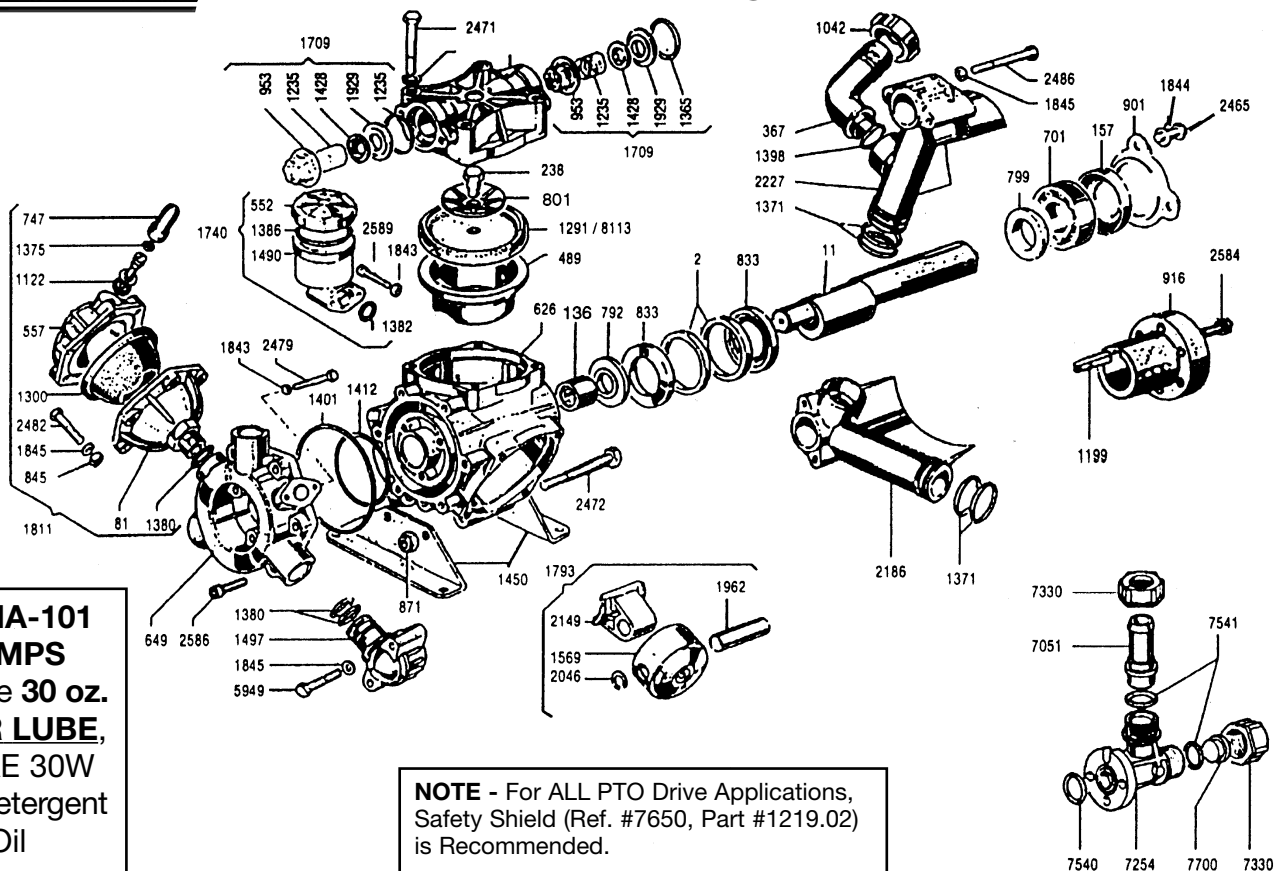




SIGMA-101

Exploded View Diagram and Parts List



SIGMA-101 PUMPS
 Require **30 oz. UDOT LUBE**,
 or SAE 30W Non-detergent Oil

NOTE - For ALL PTO Drive Applications, Safety Shield (Ref. #7650, Part #1219.02) is Recommended.

REF#	PART#	DESCRIPTION	QTY.	REF#	PART#	DESCRIPTION	QTY.
2	0001.02	RETAINER RING	2	1428	1201.03	VALVE POPPET	6
11	0002.60	CRANK SHAFT	1	1450	1202.11	BASE PLATE	2
81	0003.15	ACCUMULATOR	1	1490	1203.27	OIL RESERVOIR	1
136	0006.07	BEARING	1	1497	1203.36	MANIFOLD ELBOW	3
157	0007.05	SEAL	1	1569	1205.06	PISTON	3
238	0102.03	DIAPHRAGM BOLT	3	1709	6006.08	VALVE ASSEMBLY	6
367	0202.48	SUCTION ELBOW	1	1740	6033.01	OIL RESERVOIR ASSEMBLY	1
489	0206.14	PISTON SLEEVE	3	1798	6015.24	PISTON ROD ASSEMBLY	3
552	0208.07	OIL CAP	1	1811	6031.09	ACCUMULATOR ASSEMBLY	1
557	0208.20	ACCUMULATOR HEAD	1	1843	1403.07	WASHER	4
626	0209.34	CRANK CASE	1	1844	1403.09	WASHER	15
649	0257.02	DISCHARGE MANIFOLD	1	1845	1403.10	WASHER	18
701	0214.05	BEARING	1	1929	1501.17	VALVE SEAT	6
747	0218.01	AIR VALVE CAP	1	1962	1502.01	CONNECTING ROD PIN	3
792	0301.12	WASHER	1	2046	1506.02	SNAP RING	6
799	0301.24	WASHER	1	2149	1519.16	CONNECTING ROD	3
801	0301.07	RETAINER WASHER	3	2186	1601.14	SUCTION MANIFOLD	2
833	0302.52	ROD SPACER	2	2227	1602.23	SUCTION MANIFOLD	1
845	0303.01	NUT	6	2317	1604.35	HEAD	3
871	0304.04	LOCK NUT	2	2466	1804.06	BOLT	3
901	0501.45	FLANGE	1	2471	1804.29	BOLT	12
916	0501.62	FLANGE	1	2472	1804.31	BOLT	2
953	0601.10	VALVE CAGE	6	2479	1804.74	BOLT	2
1042	0604.25	BARB NUT	1	2486	1804.09	BOLT	6
1122	0608.15	AIR VALVE ASSEMBLY	1	2486	1804.79	BOLT	6
1199	0801.11	KEY	1	2584	1805.06	BOLT	3
1235	0901.35	VALVE SPRING	6	2586	1805.13	BOLT	9
1291	0903.02	OPT. BUNA DIAPHRAGM	3	2589	1805.26	BOLT	2
1300	0903.14	ACCUMULATOR DIAPHRAGM	1	5949	1804.72	BOLT	6
1365	1101.01	O-RING	6	7051	0202.69	HOSE BARB	1
1371	1101.07	O-RING	6	7254	0501.57	FLANGE	1
1376	1101.16	O-RING	1	7330	0604.29	BARB NUT	2
1380	1101.25	O-RING	6	7540	1101.04	O-RING	1
1382	1101.29	O-RING	1	7541	1101.12	O-RING	2
1386	1101.33	O-RING	1	7700	1603.22	PLUG	1
1398	1101.42	O-RING	1	*8113	0903.34	DESMOPAN DIAPHRAGM	3
1401	1101.58	O-RING	1				
1412	1101.79	O-RING	1				

*PARTS INCLUDED IN DIAPHRAGM REPAIR KIT PART #8700.04.
 DIAPHRAGM REPAIR KIT AVAILABLE IN BUNA-N PART #8700.11

SIGMA-101



SIGMA-101

Medium Pressure Diaphragm Pumps

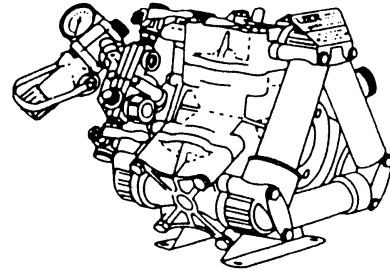
UDOR medium pressure diaphragm pumps are excellent for various horticultural, agricultural, lawn care, nursery and turf spraying applications. Simplicity of design and common parts allow easy and affordable maintenance. Built-in pulsation damper, control valve & pressure gauge is standard on all models. Standard pumps are designed to accommodate several drive options such as 1 3/8" six spline male shaft, 1 3/8" six spline female adapter, 1" solid keyed shaft, and 6:1 gear reducer for direct engine mounting.

NOTE: For industrial uses and spraying applications not listed, consult UDOR U.S.A.

DRIVE OPTIONS

PART NUMBER	DESCRIPTION
5034.B5:	16 & 18 HP BRIGGS GEAR REDUCTION
7751.A3:	1" SOLID KEYED SHAFT & BOLTS
7752.A2:	1 3/8" SIX SPLINE FEMALE ADAPTER & BOLTS, TORQUE ARM, CHAINS & SAFETY SHIELD
7753.A6:	1 3/8" SIX SPLINE MALE SHAFT & BOLTS

For ALL PTO Drive Applications, Safety Shield (Ref. #7650, Part #1219.02) is Recommended.



FEATURES

- MAXIMUM FLOW - 26 GPM
- MAXIMUM PRESSURE - 560 P.S.I.
- MAXIMUM SPEED - 550 R.P.M.
- MAXIMUM TEMP - 140° F.
- SHIPPING WEIGHT: 45 LBS.
- DIMENSIONS: LENGTH: 15.9"
WIDTH: 15.5"
HEIGHT: 13.2"
- PORTS: 1 1/4" HOSE BARB INLET, TWO BALL VALVE CONTROLLED, 1/2" HOSE BARB OUTLETS, 3/4" HOSE BARB BYPASS
- BODY: ANODIZED ALUMINUM
- LIQUID HANDLING PARTS: PLASTIC COATED ALUMINUM, GLASS FILLED NYLON AND STAINLESS STEEL

NOTE: PROTECT PUMP FROM FREEZING. IF FREEZING CONDITIONS EXIST, FLUSH PUMP WITH A 50/50 MIXTURE OF ANTI-FREEZE AND WATER.