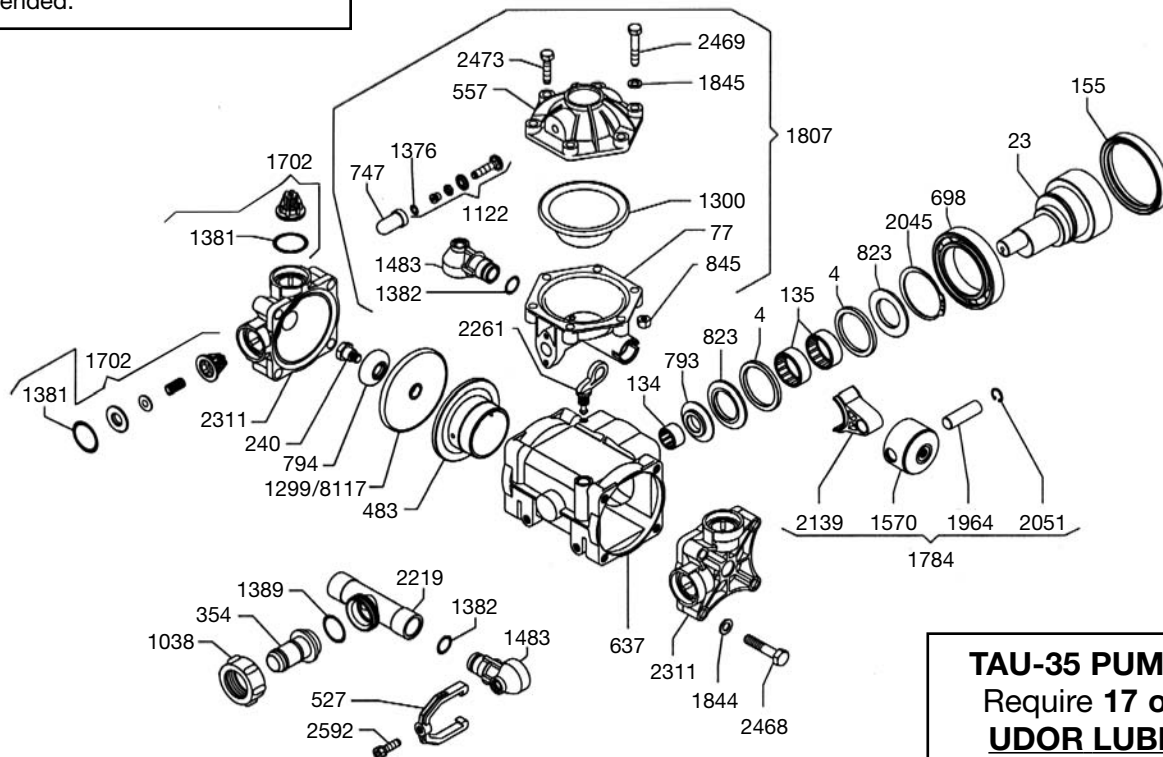




TAU-35

Exploded View Diagram and Parts List

NOTE - For ALL PTO Drive Applications, Safety Shield (Ref. #7650, Part #1219.02) is Recommended.



TAU-35 PUMPS
Require 17 oz.
UDOR LUBE,
or SAE 30W
Non-detergent Oil

REF#	PART#	DESCRIPTION	QTY	REF#	PART#	DESCRIPTION	QTY
4	0001.06	Retainer Ring	2	1382	1101.29	O-Ring	4
23	0002.73	Crank Shaft	1	1389	1101.41	O-Ring	1
77	0003.09	Pressure Accumulator	1	1483	1203.18	Manifold Elbow	4
134	0006.05	Bearing	1	1570	1205.07	Piston	2
135	0006.06	Bearing	2	1702	6006.01	Valve Assembly	4
155	0007.01	Seal	1	1784	6015.08	Piston/Rod Assembly	2
240	0102.04	Diaphragm Bolt	2	1807	6031.05	Accumulator Assembly	1
354	0202.14	Suction Barb	1	1844	1403.09	Washer	8
483	0206.08	Piston Sleeve	2	1845	1403.10	Washer	6
527	0207.07	Pump Yoke	4	1964	1502.03	Connecting Rod Pin	2
557	0208.20	Accumulator Head	1	2045	1506.01	Snap Ring	1
637	0209.43	Pump Body	1	2051	1506.15	Snap Ring	4
698	0214.01	Ball Bearing	1	2139	1519.05	Connecting Rod	2
747	0218.01	Air Valve Cap	1	2219	1602.15	Tube	1
793	0301.13	Washer	1	2261	1603.23	Oil Plug	1
794	0301.14	Retainer Washer	2	2311	1604.27	Head Assembly	2
823	0302.24	Pump Spacer	2	2468	1804.11	Bolt	8
845	0303.01	Nut	6	2469	1804.18	Bolt	4
1038	0604.18	Suction Nut	1	2473	1804.54	Bolt	2
1122	0608.15	Air Valve Assembly	1	2478	1804.68	Bolt	2
1299	0903.13	Piston Diaphragm (Buna-N)	2	2481	1804.07	Bolt	2
*1300	0903.14	Accumulator Diaphragm	1	2592	1805.11	Bolt	4
1376	1101.16	O-Ring	1	*8117	0903.38	Diaphragm (DESMOPAN, Standard)	2
*1381	1101.27	O-Ring	4				

* Parts Included in Diaphragm Repair Kit - #8700.02. (Also available in Buna-N - #8700.12.)



TAU-35

Medium Pressure Diaphragm Pumps

TAU-35 medium pressure diaphragm pumps are excellent for various horticultural, agricultural, lawn care, nursery and turf spraying applications. Simplicity of design and common parts allow easy and affordable maintenance. Built-in pulsation dampener, control valve and pressure gauge are standard.

The TAU-35 has plasticized aluminum heads, glass-filled nylon manifolds and stainless steel liquid handling parts.

Several drive options are available, including:

Part #	Description
5027.75	Gear Reduction for 4-6.5 HP
7702.01	1-3/8" 6-Spline Male PTO Shaft with Mounting Rails, Safety Shield & Bolts
7751.A1	1" Solid Keyed Shaft with Mounting Rails and Bolts
7752.A2	1-3/8" 6-Spline Female PTO Adapter and Bolts, with Torque Arms, Chains and Safety Shield

For industrial uses and spraying applications not listed, please consult UDOR U.S.A.



SPECIFICATIONS

Maximum Flow	10.5 GPM
Maximum Pressure	450 PSI
Maximum RPM	540 RPM
Maximum Temperature	140° F
Inlet Port (Hose Barb)	1"
Outlet Port (Ball Valve Controlled Hose Barb)	(2) 1/2"
Bypass Port (Hose Barb)	3/4"
Dimensions	L-10.5" x W-11" x H-10.5"
Weight	27 lbs.
Diaphragm Material	
Standard	DESMOPAN
Optional	BUNA-N

NOTE - Protect pumps from freezing. If freezing conditions exist, flush pump and system with a 50/50 mixture of antifreeze and water.